

ISSUE/REVISION RECORD	
DATE	DESCRIPTION
05/28/19	COORDINATION SET
02/20/19	HEALTH SUBMITTAL
04/24/19	HEALTH RESPONSE
05/03/19	PERMIT/BD SET

- SHEET NOTES**
- 3-POLE, NEMA 3R FACTORY INSTALLED, CIRCUIT BREAKER, E.C. TO WIRE.
 - SATELLITE DISH SHALL BE GROUNDED PER NEC 800.100(A) AND SHALL NOT BE BONDED TO ANY METALLIC EQUIPMENT, INCLUDING HVAC CURBS, SEE SHEET A2.
 - DISCONNECT FURNISHED WITH FAN, DISCONNECT SWITCH SHALL BE MOTOR RATED, IN A WEATHERPROOF ENCLOSURE, INSTALLED OUTSIDE THE UNIT.
 - WP, GF1 (WEATHER-RESISTANT TYPE PER NEC 406.8(B)(1)) DUPLEX OUTLET MOUNTED TO SIDE OF UNIT, SEE DETAIL 2 ON THIS SHEET.
 - JUNCTION BOX WITH 20 AMP CIRCUIT BREAKER, EXTERIOR LED, PROVIDE WATER-TIGHT CONDUIT WITH EXTERIOR SEALS, BOXES AND PK HOUSINGS AS REQUIRED. COORDINATE EXACT LOCATION WITH SUPPLIER.
 - DISH HOOD EXHAUST FAN CONTROLLED BY SWITCH ON DISH HOOD WIREWAY.
 - SEE EXISTING BUILDING PLANS FOR LIGHT LOCATIONS.
 - JUNCTION BOX WITH DISCONNECT SWITCH FOR EXTERIOR SIGN, COORDINATE LOCATION WITH INSTALLER.
 - HOODS SHALL BE CONTROLLED SO THAT EF-1, EF-2, EF-3 ARE INTERLOCKED. EF-4, EF-5 REFER TO LC HOOD DRAWINGS FOR ADDITIONAL INFORMATION.
 - SEE HOOD/SIGN SHEETS FOR PK HOUSING INSTALLATION DETAILS. CIRCUIT RUNS TO BE FURNISHED BY E.C. FOR ADDITIONAL INFORMATION CONTACT:
STEVE MAESER FEDERAL SIGN 306-251-1001(EXT.5356) OR 502-515-7328
JIM HARVEY FEDERAL SIGN 306-251-1001(EXT.5356) OR 502-515-7328
 - POWER THRU LC SYSTEMS FAN CONTROL CENTER (CIRCUITED THROUGH PANEL 77).
 - CONNECTION FOR COMPRESSOR TO BE MOUNTED ON ROOF OF THE WALK-IN BOXES INTERCONNECTED WITH REFRIGERATION COIL IN WALK-IN. ELECTRICAL CONTRACTOR TO PROVIDE SWITCH BOX AND ALL MATERIALS TO MAKE FINAL CONNECTIONS.
 - 30A/3-POLE, NEMA 3R SAFETY SWITCH WITH SOLID NEUTRAL AND GROUNDING KIT. FUSE AS REQUIRED. COORDINATE EXACT LOCATION, MOUNT TO BUILDING WALL.
 - COORDINATE EXACT LOCATION AND REQUIREMENTS WITH MECHANICAL CONTRACTOR.
 - DOWN TO ICE MACHINE, INTERWIRE PER MANUFACTURER'S REQUIREMENTS.
 - DOWN TO SWITCH, SEE SHEET E2.
 - 30A/2-POLE, NEMA 3R SAFETY SWITCH WITH SOLID NEUTRAL AND GROUNDING KIT. FUSE AS REQUIRED. COORDINATE EXACT LOCATION, MOUNT TO BUILDING WALL.
 - FLAG POLE FLOOD LIGHT WITH INTEGRAL PHOTOCELL CONTROL.
 - WP, GF1 (WEATHER-RESISTANT TYPE PER NEC 406.8(B)(1)) DUPLEX OUTLET MOUNTED TO BUILDING WALL, SEE DETAIL 2 ON THIS SHEET.
 - CONTRACTOR SHALL PROVIDE A MINIMUM OF 1-1/2" COMPLETE WITH WEATHERHEAD, PENETRATING THROUGH ROOF, DOWN TO MANAGER'S OFFICE NETWORK RACK. THE CONDUIT SHALL EXTEND TO MINIMUM OF 18" ABOVE FINISHED ROOF. SPECIFIC LOCATION SHALL BE COORDINATED IN FIELD WITH BUBBA'S REPRESENTATIVE. PROVIDE PULL STRING.

ALL WORK SHALL BE PERFORMED BY ELECTRICAL CONTRACTOR UNLESS STATED OTHERWISE.

NOTE:
MECHANICAL CONTRACTOR RESPONSIBLE FOR ALL LOW VOLTAGE WIRING FOR HVAC EQUIPMENT.

GENERAL NOTES

- REFER TO MECHANICAL DRAWINGS FOR EXACT LOCATION AND REQUIREMENTS OF ALL MECHANICAL EQUIPMENT SHOWN ON THIS DRAWING.
- REFER TO PANEL SCHEDULES ON SHEET E3 FOR ALL CONDUCTOR SIZES.

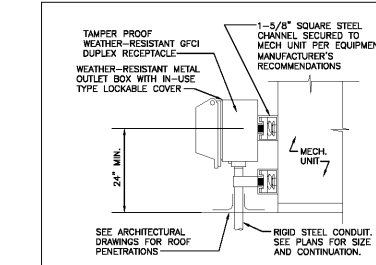
NOTE:
ELECTRICAL CONTRACTOR TO CONSULT HOOD MANUFACTURER'S WIRING DIAGRAMS AND CONTROL CABINET LAYOUT FOR ALL EXHAUST HOOD FAN REQUIREMENTS. FOR DRAWINGS CONTACT OWNER OR LC SYSTEMS @ 1-814-235-9430.

CIRCUIT S-41(TIE) SHALL CONTROL HOOD LIGHTS AND FAN CONTROL SWITCH, LOCATED ON THE HOT PREP HOOD.

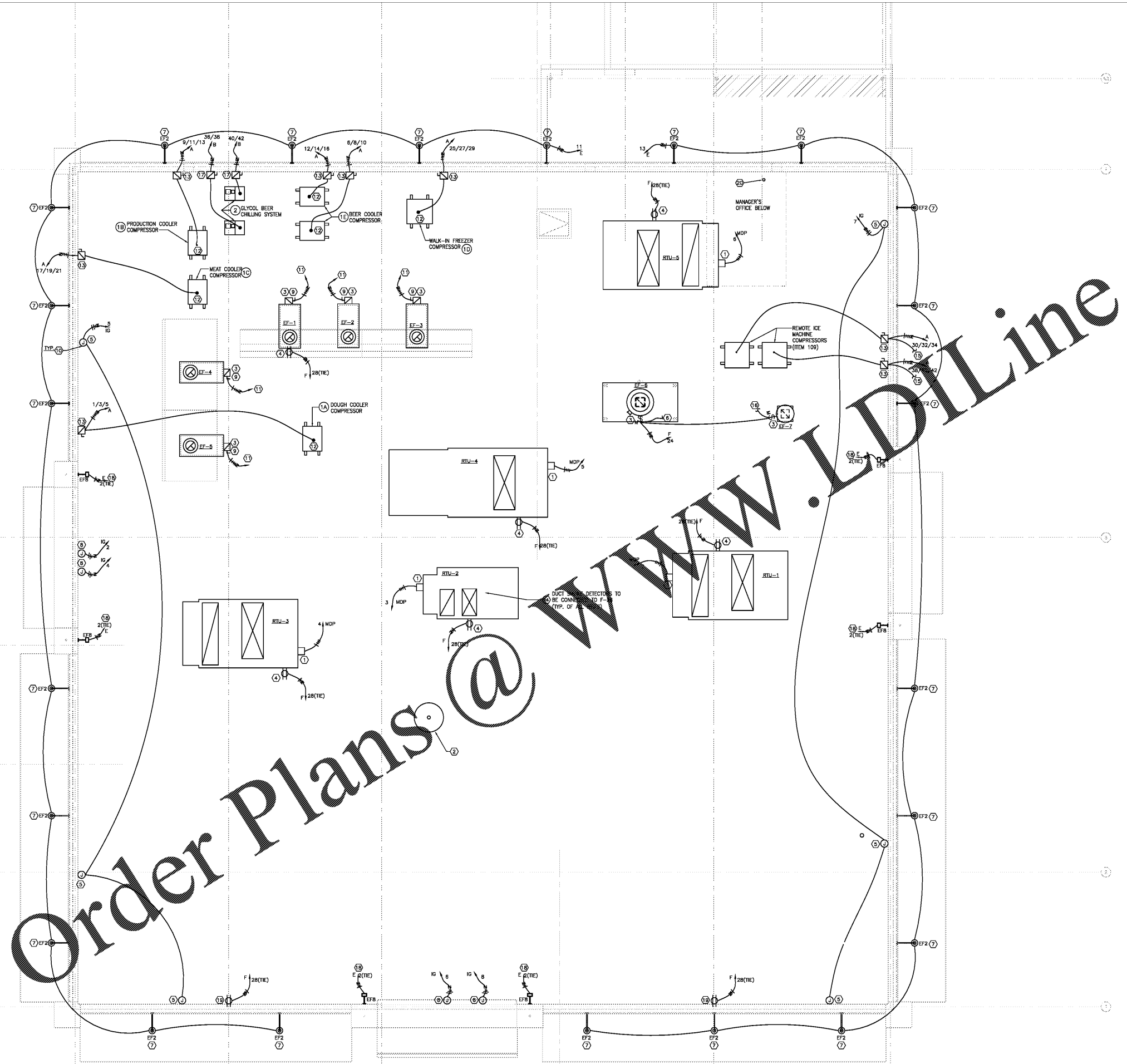
THE FAN SWITCH CIRCUIT POWERS THE MCC CONTROL CIRCUIT. THE CAPTURE JET FANS ARE POWERED FROM THE MCC CONTROL CIRCUIT. PROVIDE FIELD WIRE FROM PREP FAN SWITCH TO MCC AND MCC TO CAPTURE JET FANS AND LIGHTS ON COOKLINE HOOD.

FIELD WIRE FROM MCC AND CONNECT IN SERIES THROUGH COOKLINE AND PREP ANSUL SYSTEM NORMALLY-OPEN MICROSWITCHES, THEN WIRING BACK TO MCC.

LCSYSTEMS MOTOR CONTROL CENTER (MCC) INSTALLATION INSTRUCTIONS ARE AVAILABLE ONLINE. SEE LCSYSTEMS ELECTRICAL WIRING DIAGRAM FOR LOCATION, SITE SUPERINTENDENT WILL ALSO HAVE ADDITIONAL SUPPORTING PRINTED INSTALLATION GUIDELINE.



2 RTU RECEPTACLE MOUNTING DETAIL
SCALE: NOT TO SCALE



1 ELECTRICAL ROOF PLAN
SCALE: 1/4" = 1'-0"



Order Plans @ WWW.LDILine.com

PROFESSIONAL SEAL

GREENBERGFARROW COA #P-1359
PROFESSIONAL IN CHARGE
 GUIDO INGA ALVAREZ
PROJECT MANAGER
 A.B.
QUALITY CONTROL
 G.I.A.
DRAWN BY
 A.B.

PROJECT NAME
BUBBA'S 33

GASTONIA
NORTH CAROLINA

3287 E. FRANKLIN BLVD.



PROJECT NUMBER
 20181046.0
SHEET TITLE
ELECTRICAL ROOF PLAN

SHEET NUMBER
E4