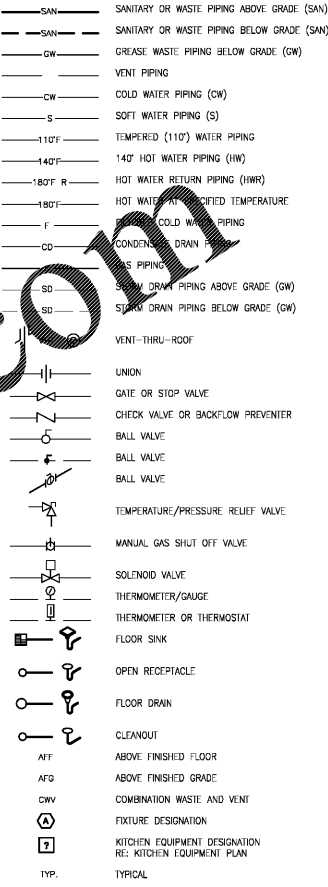


DATE	DESCRIPTION
02/20/19	COORDINATION SET
02/20/19	HEALTH SUBMITTAL
04/24/19	HEALTH RESPONSE
05/03/19	PERMIT/BD SET

PLUMBING LEGEND

NOTE: SOME SYMBOLS SHOWN IN THIS LEGEND MAY NOT NECESSARILY BE USED FOR THIS PROJECT.



PROFESSIONAL SEAL

PROFESSIONAL IN CHARGE
R. SMITH
PROJECT MANAGER
A. HOLLOWAY
QUALITY CONTROL
A. HOLLOWAY
DRAWN BY
Y. YANG

PROJECT NAME
BUBBA'S 33

GASTONIA
NORTH CAROLINA

3287 E. FRANKLIN BLVD.



PROJECT NUMBER
20181046.0

SHEET TITLE

GAS PIPING RISER DIAGRAM NOTES AND SCHEDULES

SHEET NUMBER
P7

PLUMBING GENERAL NOTES

- THE EQUIPMENT ROUGH-IN ITEMS AND THEIR DIMENSIONED LOCATIONS FOR ALL CONNECTIONS ARE ACCURATE TO THE BEST OF OUR KNOWLEDGE. IN SOME INSTANCES THE OWNER'S SUPPLIER MAY MAKE SUBSTITUTIONS OR THE EQUIPMENT ITEMS MAY VARY FROM WHAT IS SHOWN. THEREFORE, THESE ITEMS AND DIMENSIONS SHALL BE VERIFIED WITH THE EQUIPMENT SUPPLIER, OWNER AND/OR EQUIPMENT ROUGH-IN DRAWINGS. THE ARCHITECT/ENGINEER SHALL BE IMMEDIATELY NOTIFIED, PRIOR TO CONSTRUCTION, OF ANY DEVIATIONS FROM WHAT IS SHOWN OR IMPLIED ON THESE DRAWINGS. FAILURE OF THE APPROPRIATE CONTRACTOR TO VERIFY ROUGH-INS OR THEIR LOCATIONS SHALL PLACE THE RESPONSIBILITY FOR ANY SUBSEQUENT RELOCATION AND/OR ADDITIONAL ROUGH-INS DIRECTLY UPON THE CONTRACTOR.
- THE CONTRACTOR SHALL SUPPLY TO THE ARCHITECT SIX COPIES OF SHOP DRAWINGS FOR APPROVAL SO THE QUANTITY OF INTENDED MATERIALS OR EQUIPMENT CAN BE REVIEWED BEFORE INSTALLATION. THERE WILL BE NO DRAW UNLIT SHOP DRAWINGS HAVE BEEN SUBMITTED AND REVIEWED BY ARCHITECT/ENGINEER.
- DO NOT SCALE THIS DRAWING. REFER TO ARCHITECTURAL FLOOR PLANS FOR DIMENSIONS.
- THE SUBMISSION OF A PROPOSAL SHALL BE CONSIDERED AS EVIDENCE THAT THE CONTRACTOR HAS FAMILIARIZED HIMSELF WITH THE PROPOSAL FOR MATERIALS AND LABOR BECAUSE OF DIFFICULTIES ENCOUNTERED WILL NOT BE RECOGNIZED, IF THEY COULD HAVE BEEN FORESEEN HAD PROPER EXAMINATION BEEN MADE.
- WASTE AND VENT PIPING: CONTRACTOR SHALL USE EITHER CAST IRON OR SCHEDULE 40, TYPE E, GRADE 1, POLYVINYL CHLORIDE COMPOUND AS DEFINED AND DESCRIBED IN TENTATIVE SPECIFICATIONS FOR RIGID PVC (ASTM DESIGNATION: D-1784-75), OR SCHEDULE 40 ACRYLONITRILE-BUTADIENE-STYRENE COMPOUND AS DEFINED AND DESCRIBED IN STANDARD SPECIFICATION FOR ABS (ASTM DESIGNATION: D1788-73).
- FURNISH AND INSTALL SHUTOFF OR BALL VALVE AND DIELECTRIC UNION ON ALL EQUIPMENT/APPLIANCE HOT AND COLD WATER LINES. PROVIDE SHUTOFF VALVES ON HOT AND COLD WATER SUPPLIES TO EACH PLUMBING FIXTURE. PLUMBING CONTRACTOR SHALL MAKE ALL FINAL CONNECTIONS TO EQUIPMENT, COORDINATE WITH EQUIPMENT SUPPLIER FOR EXACT REQUIREMENTS.
- FURNISH & INSTALL 1" (MIN.) ARMYWEX INSULATION (OR EQUAL) WITH ALL SERVICE JACKET ON ALL HOT AND COLD WATER LINES ABOVE AND BELOW SLAB.
- WATER PIPING ABOVE SLAB SHALL BE TYPE "L" HARD TEMPER COPPER WITH 95-5 SOLDERED OR SILVER BRAZED JOINTS.
- ALL PLUMBING SHALL MEET STATE AND LOCAL CODES.
- ALL VENT PIPING SHALL BE COMPATIBLE WITH STRUCTURE, MECHANICAL EQUIPMENT, DUCTWORK, ELECTRICAL EQUIPMENT AND LIGHTS.
- VERIFY SERVICE POINTS AND METERING LOCATIONS FOR PROJECT WITH LOCAL UTILITIES AND/OR LANDLORD (DOMESTIC WATER, SANITARY SEWER, GAS, ETC.).
- THE CONTRACTOR SHALL COOPERATE FULLY AMONG THE TRADES.
- SEE MECHANICAL DRAWINGS FOR EQUIPMENT CONDENSATE PIPING. REFRIGERATION/REFRIGERATION CONDENSATE LINES SHALL BE THE RESPONSIBILITY OF THE REFRIGERATION CONTRACTOR.
- PLUMBING CONTRACTOR SHALL VERIFY WITH THE LOCAL HEALTH DEPARTMENT AND/OR WATER COMPANY AS TO THE METERING AND VALVING ARRANGEMENTS OF THE DOMESTIC WATER SERVICE LINE WHICH ENTERS THE BUILDING. SHOW A BACKFLOW PREVENTER ASSEMBLY AND/OR PRESSURE REDUCING VALVE ASSEMBLY BE REQUIRED, THE PLUMBER SHALL FURNISH AND INSTALL SAME PER LOCAL AND STATE REQUIREMENTS. THE BACKFLOW ASSEMBLY SHALL BE AS SPECIFIED ON THE DRAWINGS, OR APPROVED EQUAL MEETING ASSE STANDARDS 1013, 1015 AND 1020, ANWA C511 OR CAN/CSA-B64.4. A REDUCED PRESSURE DETECTOR ASSEMBLY SHALL CONFORM TO ASSE 1047, IF WATER PRESSURE IS 85 PSI OR ABOVE. THE PRESSURE REDUCING VALVE ASSEMBLY SHALL BE A "WATTS" SERIES #JUS SET AT 60 LBS. DELIVERY PRESSURE UNLESS OTHERWISE NOTED.
- ALL UNTESTED SYSTEMS AND RELATED DEVICES SHALL BE TESTED IN PLACE. CONTRACTOR SHALL REPLACE ALL CONTRACTOR SUPPLIED DEFECTIVE DEVICES. THE REPAIR SYSTEMS ARE CONTRACTOR'S OWN EXPENSE BEFORE COMPLETION OF THE PROJECT.
- THE POTABLE WATER SUPPLY SHALL BE PROTECTED AGAINST BACKFLOW AND SIPHONAGE. BOTH NATIONAL AND INDICATED. ALL EQUIPMENT CONNECTED TO THE POTABLE WATER SYSTEM BEING CAPABLE OF POLLUTING OR CONTAMINATING THE POTABLE WATER DISTRIBUTION SYSTEM OR ANY PART THEREOF BY A REVERSAL OF FLOW. PRESSURE DROP, PRESSURE LOSS, INDICATED VACUUM OR IMPLICATION BECAUSE OF ANY PRIMARY OR AUXILIARY PUMPING SYSTEM CONNECTED THEREIN MUST BE ISOLATED AND CONTAINED BY MEANS OF APPROVED BACKFLOW DEVICES, CHECK VALVES, AIR GAPS OR VACUUM BREAKERS. PLUMBING CONTRACTORS SHALL FURNISH AND INSTALL THESE DEVICES PER LOCAL CODE REQUIREMENTS.
- ALL ROOF PENETRATIONS FOR ROOF DRAINS AND PLUMBING/GAS/VENTING/SHUTOFF PIPING SHALL BE MADE IN ACCORDANCE WITH ROOF SYSTEM MANUFACTURER'S GUIDELINES. COORDINATE WITH ARCHITECTURAL, DETAILS AND/OR LANDLORD FOR ROOF SYSTEMS USED.
- THE NATURAL GAS TO THE EQUIPMENT SHALL BE LOW PRESSURE. THE REGULATOR OUTLET PRESSURE SHALL BE 7" WATER COLUMN. IF THE GAS COMPANY IS UNABLE TO PROVIDE THIS PRESSURE, IMMEDIATELY CONTACT THE G/A/O OR OWNER FOR INSTRUCTIONS.
- ADJUST GRADES OF FLOOR DRAINS FLUSH WITH FINISHED FLOOR. PROVIDE DEEP SILL, P-TRAP FOR ALL FLOOR DRAINS/FLOOR SINKS/FRENCH DRAINS. SEE ARCH. SHEETS FOR FLOOR SLOPES (AROUND DRAINS, IF REQUIRED).
- INSTALL 1" FIBERGLASS INSULATION (OR EQUAL) WITH ALL SERVICE JACKET ON ALL ROOF LEADERS ABOVE CEILING.
- WATER PIPING BELOW SLAB SHALL BE TYPE "M" SOFT TEMPER COPPER WITH 95-5 SOLDERED OR SILVER BRAZED JOINTS.
- INSTALL AUTOMATIC FUEL SHUTOFF VALVES PROVIDED BY THE HOOD MANUFACTURER IN THE GAS LINE OR LINES THAT SERVE THE COOKING EQUIPMENT. THIS AUTOMATIC SHUTOFF VALVE SHALL BE ACTUATED BY THE HOOD FIRE PROTECTION SYSTEM. LOCATE AS SHOWN ON PLANS. NOTIFY ARCHITECT/ENGINEER IF LOCAL CODE REQUIRES ALTERNATE LOCATION.
- PLUMBING CONTRACTOR SHALL FURNISH AND INSTALL COPPER INDIRECT WASTE PIPING REQUIRED FROM EQUIPMENT TO FLOOR DRAINS, OPEN RECEPTACLES OR FLOOR SINKS. PIPING SHALL COMPLY WITH STATE AND LOCAL CODES. COORDINATE WITH ALL EQUIPMENT SUPPLIERS AND SIZE AS REQUIRED BY PREC. OF EQUIPMENT SUPPLIER. HOLD PIPING TIGHT TO WALL WHERE APPLICABLE. PROPERLY SECURE AS REQUIRED. COORDINATE WITH GASWORK SUPPLIER FOR MAXIMUM CLEARANCE UNDER CABINETS, REFRIGERATION CONDENSATE LINES SHALL BE THE RESPONSIBILITY OF THE REFRIGERATION CONTRACTOR.
- PLUMBING CONTRACTOR SHALL FURNISH AND INSTALL A PRESSURE REDUCING VALVE ON THE INLET OF THE DISHWASHER TO REDUCE INCOMING WATER PRESSURE TO LESS THAN 20 P.S.I.
- PLUMBING CONTRACTOR SHALL INSTALL ALL 2" DRAIN PIPING WITH A MINIMUM SLOPE OF 1/4" PER FOOT. INSTALL ALL SPRING GREATER THAN 2" AT A MINIMUM OF 1/8" PER FOOT SLOPE.
- PROVIDE CHROME PLATED ESCUTCHEONS AT ALL WALL PENETRATIONS.
- ALL EXPOSED GAS PIPING SHALL BE PAINTED TO MATCH ADJACENT WALL.
- ALL VTR'S SHALL BE EXTENDED TO MINIMUM OF 8" ABOVE PARAPET AND MAINTAINED 10" OF MINIMUM FROM ALL OUTSIDE AIR INTAKES.
- VERY MOUNTING HEIGHTS OF ALL BARRIER FREE FIXTURES WITH ARCHITECTURAL PLANS.
- BARRIER FREE LAVATORY P-TRAP AND ANGLE ASSEMBLIES SHALL BE INSULATED WITH TRAP WRAP PROTECTIVE KIT 5000, BROCOR (1-800-827-1000) OR EQUAL. ABRASION RESISTANT EXTERIOR COVER SHALL BE SMOOTH AND HAVE MIN. WALL OVER CUSHIONED FORM INSERT. FASTENERS SHALL REMAIN SUBSTITUTED OUT OF SIGHT.
- MATERIALS, EQUIPMENT, ASSEMBLIES AND SYSTEMS SHALL MEET ALL APPLICABLE REQUIREMENTS OF NATIONALLY RECOGNIZED TESTING ORGANIZATIONS SUCH AS THE ULL, ASSE, IAPMO, AND NFAA AS WELL AS THE MOST CURRENT VERSIONS OF THE NATIONAL AND LOCAL REGULATIONS.
- ALL UNTESTED SYSTEMS AND RELATED DEVICES SHALL BE TESTED IN PLACE. CONTRACTOR SHALL REPLACE ALL CONTRACTOR SUPPLIED DEFECTIVE DEVICES. THE REPAIR SYSTEMS ARE CONTRACTOR'S OWN EXPENSE BEFORE COMPLETION OF THE PROJECT.

CONNECTED GAS LOAD

MARK	ITEM	CONN. SIZE	QTY.	INPUT CUBIC FEET/HR	SUBTOTAL CUBIC FEET/HR
RTU-1	ROOFTOP UNIT	VERY	1	350	350
RTU-2	ROOFTOP UNIT	VERY	1	250	250
RTU-3	ROOFTOP UNIT	VERY	1	250	250
RTU-4	ROOFTOP UNIT	VERY	1	651	651
RTU-5	ROOFTOP UNIT	VERY	1	350	350
SPACE HEATING LOAD: 1851					
WATER HEATER (140)					
		3/4"	3	199	597
COOKING EQUIPMENT					
16	4" GRIDDLE	3/4"	0	85	0
17	3" GRIDDLE	3/4"	1	81	81
19	CHARBROILER	3/4"	1	102	102
24	18" FRYER	3/4"	5	140	700
54	CONVECTION OVEN	3/4"	1	100	100
56	6 BURNER RANGE	3/4"	1	180	180
61	CONVECTION OVEN (SINGLE)	3/4"	0	95	0
70	DOUBLE STACK PIZZA OVEN	3/4"	1	260	260
TOTAL CUBE: 3871					

SHOCK ARRESTORS

P.D.I. SYMBOL	FIXTURE UNITS	CHAMBER LENGTH	SWEAT CONNECTION
A	1-11	9-5/8"	1/2"
B	12-32	11-3/4"	3/4"
C	33-60	14-11/16"	1"

PLUMBING FIXTURE SCHEDULE

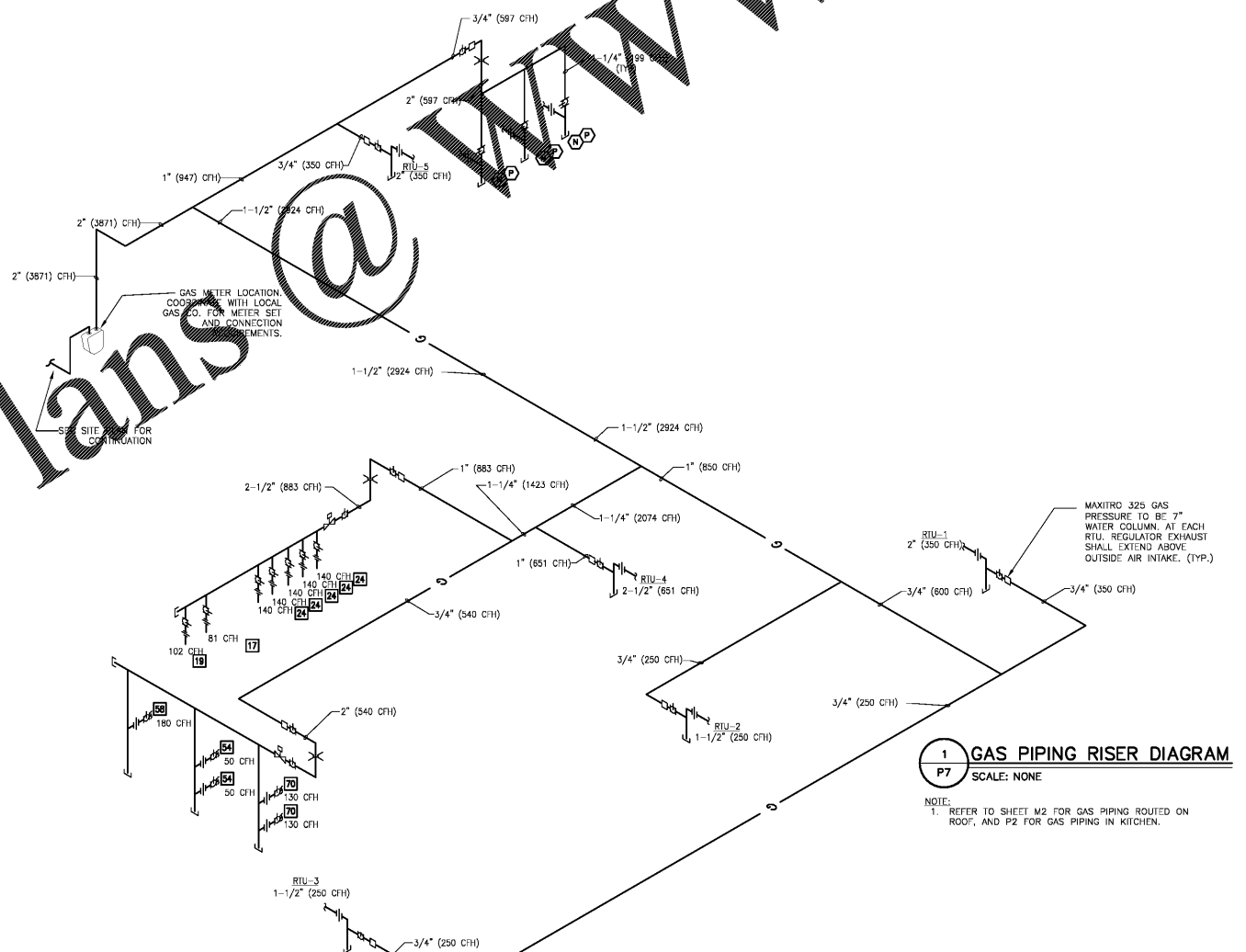
MARK	ITEM	HW	CW	WASTE	DESCRIPTION
A	WATER CLOSET	---	1"	4"	AM. STANDARD MADERA #2234.015, FLOUNGATED, DIRECT-FED PRESSURE DROP, LOW CONSUMPTION (1.6 GPF), G2 OPTIMA #8111, OPEN FRONT SEAT, NO COVER.
B	WATER CLOSET (BARRIER FREE)	---	1"	4"	AM. STANDARD MADERA #3451.001, FLOUNGATED, 17" HIGH, DIRECT-FED SPIN JET ACTION, LOW CONSUMPTION (1.6 GPF), G2 OPTIMA #8111, OPEN FRONT SEAT, NO COVER.
C	URINAL	---	3/4"	2"	AMERICAN STANDARD STALLBOOK #840.014, FLOOR MOUNTED, EXTENDED SEATS, WASHOUT ACTION, LOW CONSUMPTION (1.0 GPF) WITH BATTERY POWERED SLOAN MODEL 185 SSW FLUSH VALVE.
D	LAVATORY (THROUGH SINK)	1/2"	1/2"	1 1/2"	SINK - REFER TO MANUFACTURER AND MODEL NUMBER. 1-1/2" P-TRAP AND IMPULSION FAUCET - MODEL #857, WITH WREST BLADE HANDLES. PROVIDE PROTECTIVE WRAP FOR BARRIER FREE USE. LAVATORY AND SINK PROVIDED BY MLUKOW. ALL OTHER FIXTURE COMPONENTS PROVIDED BY P.C.
E	MOP BASIN DRAIN	---	---	3"	ZURN ZB-415-85H-Y CAST IRON BODY, 8" DIA. WITH HINGED POLISHED BRONZE TOP, SEDIMENT BUCKET
F	FLOOR DRAIN (RESTROOM)	---	---	3"	ZURN ZLC FD-2280-PB-R5-P, PVC BODY, ROUND TOP, 6" POLISHED BRASS STRAINER. TRAP PRIMER CONNECTION.
G	FLOOR DRAIN (KITCHEN)	---	---	3" OR 4"	ZURN ZLC FD-2280-PB-R5-P, PVC BODY, ROUND TOP, 6" POLISHED BRASS STRAINER. TRAP PRIMER CONNECTION.
H	FLOOR DRAIN (FUNNEL)	---	---	3" OR 4"	ZURN ZLC FD-2280-R5-P, PVC BODY, ROUND TOP, 6" POLISHED BRASS STRAINER. ZB-328-4 ROUND POLISHED BRASS FUNNEL ATTACHMENT. TRAP PRIMER CONNECTION.
I	FLOOR DRAIN (UTILITY)	---	---	4"	ZURN ZLC FD-2280-R5-P, PVC BODY, ROUND TOP, 6" POLISHED BRASS STRAINER. TRAP PRIMER ATTACHMENT.
J	FLOOR SINK (GENERAL)	---	---	3" OR 4"	ZURN ZLC FD-2370 T OR -H, PVC BODY, 14" SQ. TOP, 12" SQ. FINISHED BRASS GRATE, SECONDARY STRAINER, 1/2, 3/4 OR NO GRATE AS INDICATED ON PLANS.
K	FLOOR SINK (DISHWASHER)	---	---	4"	ZURN ZN-1901-12" SQUARE TOP, 8" DEEP, CAST IRON BODY, HALF BRASS
L	SERVICE FAUCET	1/2"	1/2"	---	CHICAGO FAUCET #857-CF, WALL MOUNTED CONCEALED FITTING, POLISHED CHROME FINISH VACUUM BREAKER SPOUT WITH PAL HOOK AND WALL BRACE. MALE HOSE THREAD OUTLET, LEVER HANDLE. PROVIDE WITH MOP HANGER.
M	WALL HYDRANT	1/2"	1/2"	---	WOODFORD MODEL H57 SERIES FOR HOT & COLD WATER. FREEZELESS WITH VACUUM BREAKER, WALL CLAMP, TEE KEY.
N	ITEM TO BE FURNISHED BY OWNER OR EQUIPMENT SUPPLIER. CONTRACTOR SHALL COORDINATE INSTALLATION AND FINAL CONNECTION OF ALL EQUIPMENT WITH SUPPLIER. FIELD VERIFY LOCATIONS, SIZES AND CONNECTION REQUIREMENTS OF ALL WATER, GAS, ELECTRIC, INDIRECT WASTE AND WASTE CONNECTIONS PRIOR TO INSTALLATION.				
O	CLEANOUT	---	---	3" OR 4"	ZURN ZLC CO-2450 PVA, PVC BODY WITH ADJUSTABLE NICKEL COVER.
P	WATER HEATERS	1-1/2"	1-1/2"	---	HTR MODEL RH98-119 COMMERCIAL WATER HEATERS. 199,000 BTU/HR INPUT. DIRECT VENT. SET TEMPERATURE AT 140 DEGREES FOR ALL WATER HEATERS. INSTALL PER MANUFACTURER'S RECOMMENDATIONS.
Q	FLOOR SINK	---	---	4"	ZURN Z1510 DEEP CAST IRON BODY AND SQUARE SLOTTED MEDIUM DUTY GRATE, WITH WHITE AGGREGATE PORCELAIN ENAMEL INTERIOR AND TOP, COMPLETE WITH ABS ANTI-SPLASH INTERIOR BOTTOM DOME.
R	FLOOR TROUGH	---	---	4"	STAINLESS DRAINS. FURNISHED AND INSTALLED BY PLUMBING CONTRACTOR. PROVIDE .304 STAINLESS STEEL, SQUARE BOTTOM TRENCH DRAIN, WITH 12 GA. PERFORATED GRATE AND SEDIMENT CUP. REFER TO ARCHITECTURAL AND STRUCTURAL DRAWINGS. CONTACT TEXAS ROADHOUSE NATIONAL ACCOUNT REPRESENTATIVE (SHANNON BAKER) AT (888) 785-2345.
S	WALL HYDRANT	3/4"	3/4"	---	WOODFORD MODEL 65, AUTOMATIC DRAINING, FREEZELESS WITH VACUUM BREAKER. LOOSE KEY.
T	ROOF DRAIN (SEE ARCHITECTURAL)	---	---	LINE SIZE	ZURN Z-121, NO HUB CONNECTOR ROOF DRAIN.
U	HOSE BIB	3/4"	3/4"	---	MIFAB MHY-9141, WALL FAUCET WITH LOCK SHIELD, LOOSE TEE KEY HANDLE AND HOSE CONNECTION BREAKER. MOUNT AT 36" AFF OR AS DIRECTED BY ARCHITECT.
V	DOMESTIC WATER BOOSTER PUMP	---	---	2"	AQUAVAR E-ABII MODEL 5AVN12MS1J2K2 BOOSTER PUMP SYSTEM AND AQUAVAR IPC CONTROLLER. SHIP PUMP CAPABLE OF PROVIDING A MINIMUM OF 76GPM WITH 23PSI BOOST. INCLUDE TANK AND NEMA 1 VARIABLE SPEED CONTROLLER.
W	THERMOSTATIC MIXING VALVE	3/4"	3/4"	---	THERMOSTATIC MIXING VALVE: POWERS MODEL LF480-00 OR EQUAL, 1/2" INLETS AND 1/2" OUTLET, WITH INTERNAL CHECKSTOPS. SET AT 110°F. INSTALL VALVE 6"-0" (MAX) AFF. FOR PROPER OPERATION, VALVE MUST BE INSTALLED AND MAINTAINED PER MANUFACTURER'S RECOMMENDATIONS.
X	LAVATORY (WALL MOUNTED)	1/2"	1/2"	1 1/2"	AM. STANDARD LUCERNE #3355.012, 20"x17", 4" CENTERS, PROVIDE WITH GRID DRAIN, 1-1/4" P-TRAP AND IMPULSION, 8" CENTER SET CAST CHROME FAUCET. PROVIDE MICH MODEL 80120S WITH WREST BLADE HANDLES. PROVIDE 8" PROTECTIVE WRAP FOR BARRIER FREE USE.
Y	FLOOR SINK	---	---	---	MIFAB FSS24-30 PVC FLOOR SINK.
Z	ROOF HYDRANT	---	---	3/4"	FREEZE FLOW SANITARY ROOF HYDRANT MODEL# 2131R.

PLUMBING FIXTURE SCHEDULE NOTES:

- CONTRACTOR SHALL FURNISH AND INSTALL A CARRIER FOR EACH FIXTURE WHICH IS WALL HUNG, UNLESS OTHERWISE NOTED. PROVIDE APPROPRIATE CARRIER PER FIXTURE TYPE AND REQUIREMENTS.
- CONTRACTOR SHALL FURNISH AND INSTALL P.P.P. INC. ZURN, WATTS (OR EQUAL) TRAP PRIMERS, TO SERVE ALL APPROPRIATE FLOOR DRAINS AND/OR OPEN RECEPTACLES AS REQUIRED.
- ACCEPTABLE ALTERNATE MANUFACTURERS FOR ITEMS INCLUDING BUT NOT LIMITED TO CLEANOUTS/FLOOR DRAINS/FLOOR SINKS/HUB DRAINS: JAY R. SMITH, JOSAM, WACE, ZURN.
- WRAP ALL SUPPLIES AND P-TRAPS OF BARRIER FREE LAVATORIES WITH A PROTECTIVE INSULATING MATERIAL AND A SMOOTH JACKET (TRAP-TRAP OR EQUAL).
- PLUMBING CONTRACTOR SHALL COORDINATE WITH ELEC. AND MECH. CONTRACTORS TO PROVIDE INFORMATION CONCERNING OPERATION OF WATER HEATER FOR CONNECTION OF AUTOMATIC FLUE DAMPERS AND/OR MOTORIZED COMBUSTION AIR LOCKERS (WHEN REQUIRED).
- SHOCK ARRESTORS FOR BRANCH PIPING TO FIXTURES WITH QUICK CLOSING VALVES SHALL BE BY P.P.P. INC., ZURN (OR EQUAL), SIZED PER PDI REQUIREMENTS.
- REFER TO KITCHEN CONSULTANTS DRAWINGS (CO AND FS SERIES) FOR KITCHEN FIXTURES NOT LISTED HERE.
- STORE EXCESS WATER HEATER PARTS IN TOP OF WATER HEATER.
- WHERE HOSE BIBS ARE INDICATED, P.C. TO PROVIDE HOSE BIB WITH VACUUM BREAKER, T&S B-0736 OR EQUAL AND CONNECT TO NOTED WATER SUPPLY.

GAS PIPING NOTES

- GAS PIPING SIZED PER 2015 IFGC TABLE 402.4(1) FOR 2 PSI INLET PRESSURE, 1 PSI PRESSURE LOSS, 0.6 SPECIFIC GRAVITY, AND THE TOTAL CONNECTED LOAD ±200' FROM METER TO FARTHEST FIXTURE.
- GAS PIPING SHALL BE BLACK STEEL OR AS PERMITTED BY CODE.
- GAS PIPING CONNECTIONS SHALL BE THREADED UNLESS OTHERWISE REQUIRED BY CODE.
- EXTERIOR GAS PIPING SHALL RECEIVE ONE COAT EACH OF A RUST INHIBITING RESISTANT PRIMER AND TOP COAT. COORDINATE WITH ARCHITECT FOR COLOR.
- ALL GAS BURNING EQUIPMENT SHALL BE INSTALLED PER NFPA 58, NFPA 96 (L.P.G.) OR NFPA #98 (COMMERCIAL COOKING EQUIPMENT).



1 GAS PIPING RISER DIAGRAM
SCALE: NONE

NOTE:
1. REFER TO SHEET M2 FOR GAS PIPING ROUTED ON ROOF, AND P2 FOR GAS PIPING IN KITCHEN.

Order Plans @