

COPYRIGHT NOTICE:
This drawing is the property of the above
mentioned Professional and it is not to be used
for any purpose other than the specific
project and site named herein, and cannot
be reproduced in any manner without the
express written permission from the Professional.

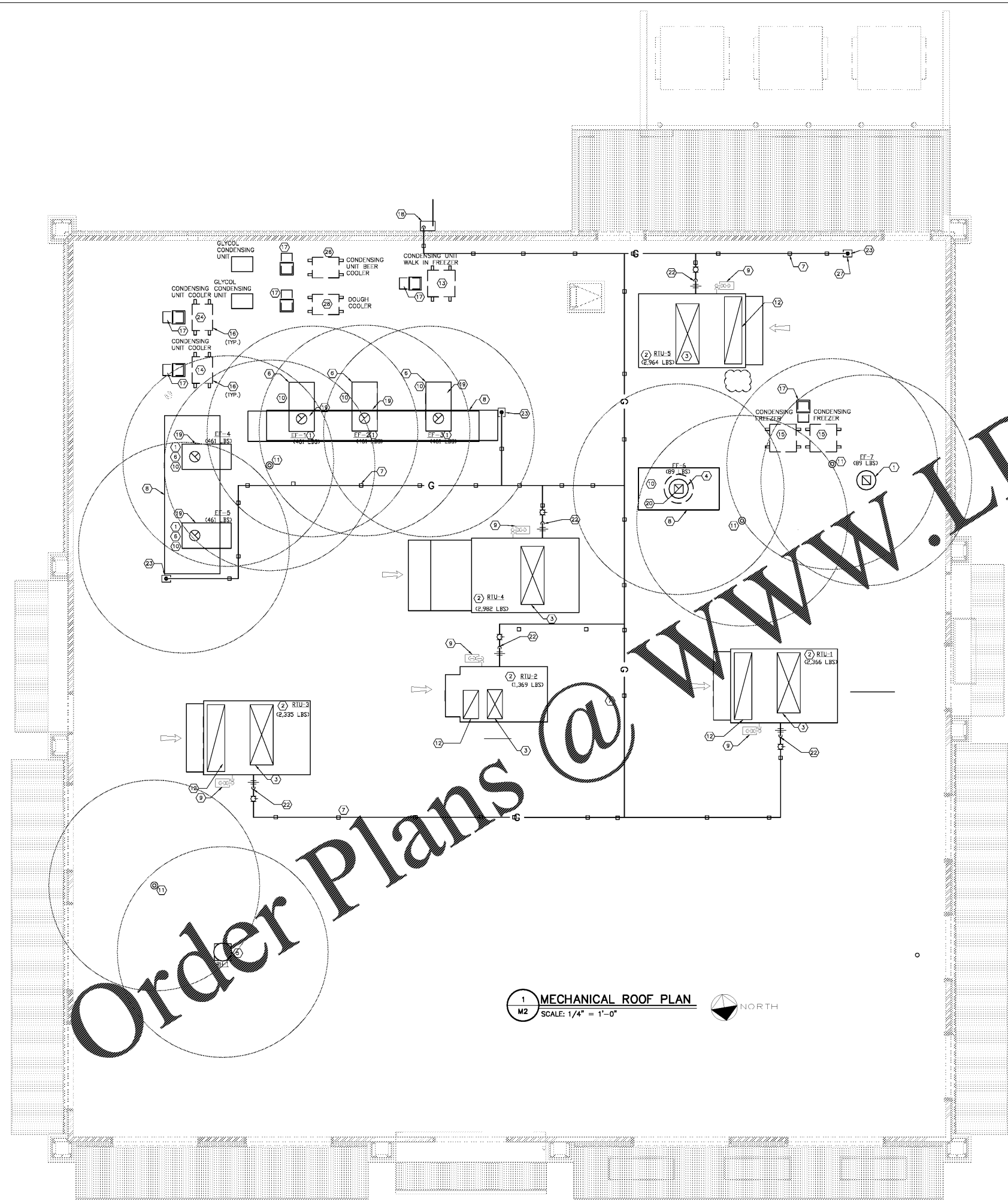
DATE	DESCRIPTION
07/25/19	COORDINATION SET
02/20/19	HEALTH SUBMITTAL
04/24/19	HEALTH RESPONSE
05/03/19	PERMIT/BD SET

MECHANICAL ROOF PLAN NOTES:

- 1 EXHAUST FAN, SIZE AS INDICATED, COORDINATE EXACT LOCATION WITH STRUCTURE.
- 2 ROOFTOP HVAC UNIT ON FULL PERIMETER INSULATED ROOF CURB, COORDINATE FLASHING AND WEATHER PROOFING WITH G.C. SEE DETAIL 3/M4.
- 3 SUPPLY AIR DUCT OPENINGS; REFER TO MECHANICAL PLAN FOR CONTINUATION.
- 4 DISHWASHER HOOD EXHAUST FAN, COORDINATE EXACT LOCATION WITH STRUCTURE.
- 5 PROVIDE GRAVITY RELIEF HOOD WITH BACKDRAFT DAMPER THROUGH ROOF FOR PATIO BAR AIR PRESSURE RELIEF, 550 CFM AT 0.1 IN. W.C.
- 6 KITCHEN HOOD EXHAUST FAN ON FULL PERIMETER ROOF CURB (ELEVATED BY M.C.), PROVIDE NEPA-5 DUCTWORK AND CLEARANCES, COORDINATE FLASHING AND WEATHERPROOFING WITH G.C., COORDINATE EXACT LOCATION WITH G.C.
- 7 GAS PIPING ON ROOF, PROVIDE MOUNTING SUPPORT, SEE DETAIL 7/P6, TYPICAL. GAS PIPING AND SUPPORTS ARE TO BE PROVIDED AND INSTALLED BY PLUMBING CONTRACTOR.
- 8 KITCHEN HOOD BELOW.
- 9 REFER TO MECHANICAL PLAN, SPILL ON ROOF, 1/M4.
- 10 EXHAUST DUCT DUCTS, REFER TO MECH. FLOOR PLAN FOR CONTINUATION, COORDINATE WITH STRUCTURE.
- 11 PILING VENT THRU ROOF.
- 12 REFER TO AIR DUCT OPENING, REFER TO MECHANICAL PLAN FOR CONTINUATION.
- 13 CONDENSING UNIT, FURNISHED AND INSTALLED BY KITCHEN EQUIPMENT SUPPLIER.
- 14 CONDENSING UNIT FOR MEAT COOLER, FURNISHED AND INSTALLED BY KITCHEN EQUIPMENT SUPPLIER.
- 15 CONDENSING UNIT FOR ICE MACHINE, FURNISHED AND INSTALLED BY KITCHEN EQUIPMENT SUPPLIER.
- 16 ROOFED IN CURB FOR CONDENSING UNIT, COORDINATE WITH G.C.
- 17 REFRIGERANT PIPE GOOSENECK, REFER TO DETAIL 2/M4, COORDINATE WITH ROOFING AND REFRIGERATION CONTRACTORS.
- 18 GAS LINE UP ON OUTSIDE WALL FROM GAS METER, COORDINATE METER LOCATION WITH LOCAL GAS COMPANY, GAS LINE IS TO BE PROVIDED AND INSTALLED BY PLUMBING CONTRACTOR.
- 19 EXHAUST DUCT; REFER TO LC SYSTEM HOOD DWGS, PROVIDE PROPER CLEARANCES.
- 20 18 GA STAINLESS STEEL DISHWASHER EXHAUST DUCT, REFER TO SHEET M-1.
- 21 NOT USED.
- 22 PROVIDE DIRT LEG, SHUT OFF VALVE, GAS PRESSURE REGULATOR & UNION AT UNIT CONNECTIONS, TYPICAL.
- 23 GAS PIPING DOWN THROUGH ROOF TO GAS POWERED EQUIPMENT, REFER TO PLUMBING PLANS FOR CONTINUATION, PROVIDE PITCH POCKET AND GAS PRESSURE REGULATOR ON ROOF.
- 24 CONDENSING UNIT FOR WALK-IN COOLER, FURNISHED AND INSTALLED BY KITCHEN EQUIPMENT SUPPLIER.
- 25 10'-0" EXHAUST CLEARANCE FROM OUTSIDE AIR INTAKE.
- 26 CONDENSING UNIT FOR BEER COOLER, FURNISHED AND INSTALLED BY KITCHEN EQUIPMENT SUPPLIER.
- 27 GAS PIPING THRU ROOF TO WATER HEATERS WITH GAS PRESSURE REGULATOR ON ROOF, SEE DETAIL 1/P6.
- 28 CONDENSING UNIT FOR DOUGH COOLER, FURNISHED AND INSTALLED BY KITCHEN EQUIPMENT SUPPLIER.

GENERAL NOTES:

A) GAS PIPING IS TO BE INSTALLED BY PLUMBING CONTRACTOR, REFER TO SHEETS P-2 AND P-7.



1 MECHANICAL ROOF PLAN
M2 SCALE: 1/4" = 1'-0" NORTH

Order Plans @

WWW.LDILLING.COM

PROFESSIONAL SEAL

PROFESSIONAL IN CHARGE
R. SMITH
PROJECT MANAGER
A. HOLLOW
QUALITY CONTROL
A. HOLLOW
DRAWN BY
Y. YANG

PROJECT NAME
BUBBA'S 33

GASTONIA
NORTH CAROLINA
3287 E. FRANKLIN BLVD.



PROJECT NUMBER
20181046.0

SHEET TITLE
MECHANICAL ROOF PLAN

SHEET NUMBER
M2