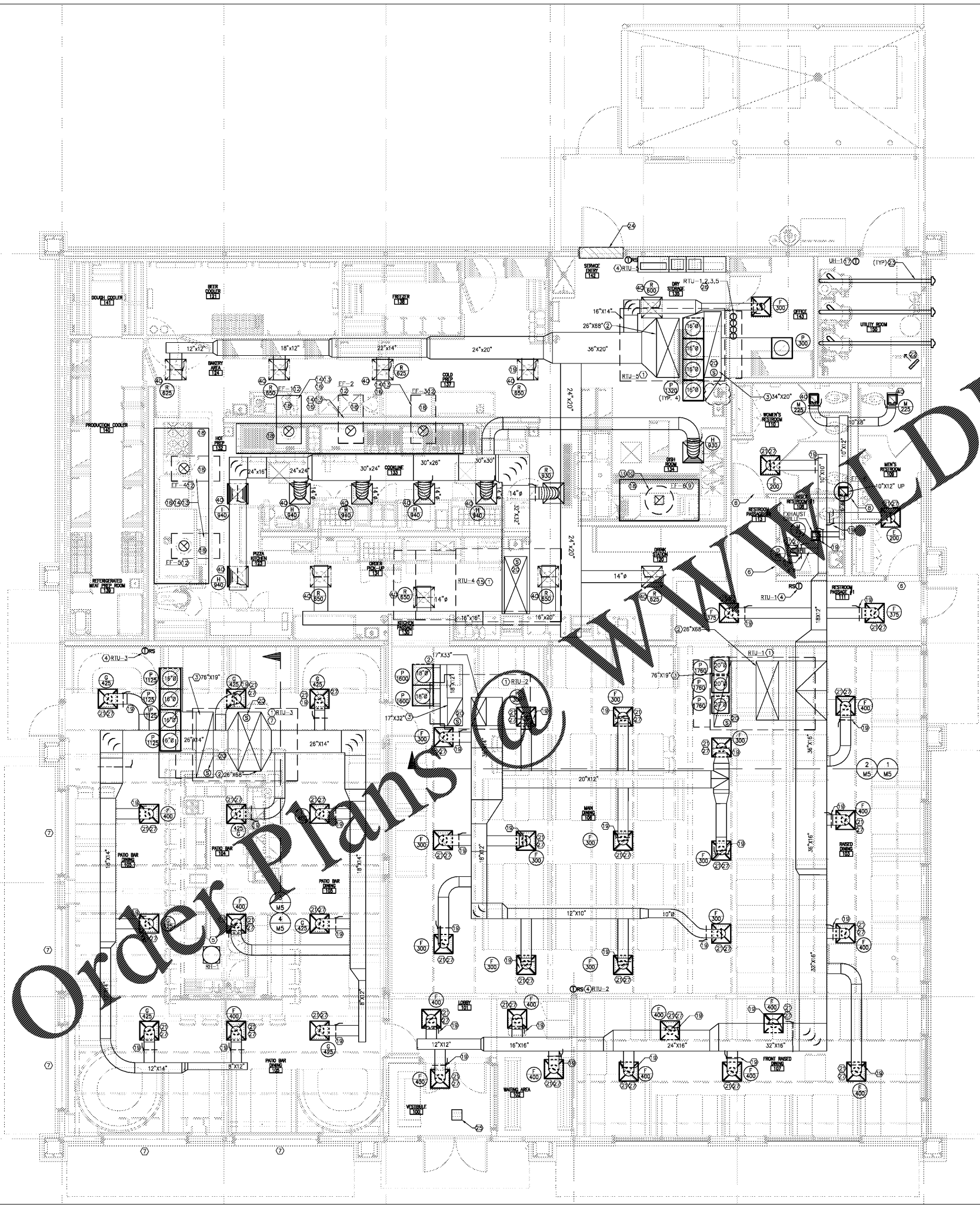


ISSUE/REVISION RECORD	
DATE	DESCRIPTION
07/23/19	COORDINATION SET
02/22/19	HEALTH RESPONSE
04/24/19	HEALTH RESPONSE
05/03/19	PERMIT/BD SET

MECHANICAL PLAN NOTES:

1. ROOFTOP UNIT LOCATED ON ROOF. REFER TO MECHANICAL ROOF PLAN SIZE AS INDICATED. SEE DETAIL 10/M4.
2. SUPPLY AIR DUCT FROM UNIT ON ROOF. SIZE AS INDICATED. TRANSITION TO DUCT COLLAR. PROVIDE FLEXIBLE DUCT CONNECTOR.
3. RETURN AIR DUCT FROM UNIT ON ROOF. SIZE AS INDICATED. TRANSITION TO DUCT COLLAR. PROVIDE FLEXIBLE DUCT CONNECTOR.
4. THERMOSTAT (T) OR HUMIDISTAT (H) REMOTE SENSOR FOR RTU DESIGNATED. INTERLOCK WITH CORRESPONDING THERMOSTAT IN OFFICE. MOUNT ON WALL OR COLUMN @ 65" A.F.F.
5. PROVIDE GREENHECK ORSR-10 OR EQUIVALENT GRAVITY RELIEF HOOD WITH BACKDRAFT DAMPER THROUGH ROOF FOR PATIO BAR AIR PRESSURE RELIEF. 550 CFM AT 0.1 IN W.C. PROVIDE CURB.
6. PROVIDE 1" DOOR UNDERCUT.
7. PROVIDE MAGNETIC SWITCH AT BOTTOM OF GARAGE DOOR TRACK TO SHUT DOWN RTU-3 IF GARAGE DOOR IS OPEN.
8. TOILET EXHAUST FAN ON ROOF. REFER TO MECHANICAL ROOF PLAN.
9. DISHWASHER EXHAUST FAN ON ROOF. REFER TO MECHANICAL ROOF PLAN.
10. DISHWASHER EXHAUST DUCT 18GA. STAINLESS STEEL. WELDED LIQUID TIGHT. FAN AND INSTALLED BY OTHER CONT.
11. DISHWASHER EXHAUST HOOD DUCT COLLAR PROVIDED BY DISHWASHER SUPPLIER. REFER TO HOOD DRAWINGS.
12. KITCHEN EXHAUST FAN ON ROOF. REFER TO MECHANICAL ROOF PLAN.
13. KITCHEN EXHAUST DUCTWORK FOR TYPE I HOODS TO BE SUPPLIED BY LC SYSTEMS AND INSTALLED BY MECHANICAL CONTRACTOR. INSTALL IN ACCORDANCE WITH NFPA 96. WELD AT HOOD EXHAUST COLLARS. OFFSET AS REQUIRED. REFER TO DETAIL 12/M4.
14. HOOD EXHAUST COLLAR. REFER TO HOOD DRAWINGS. TYPICAL.
15. INTERLOCK RTU-4 TO RUN WHENEVER EF-1, EF-2, EF-3, EF-4, EF-5, EF-6, OR EF-7 IS IN OPERATIONAL MODE.
16. LC SYSTEMS TO SUPPLY ALL DUCT WORK ON BROILER, FRYER AND HOT PREP HOODS.
17. THERMOSTAT REMOTE SENSOR FOR UNIT HEATER. MOUNT ON WALL 36" AFF.
18. KITCHEN HOOD. FURNISHED BY OWNER, INSTALLED BY MECHANICAL CONTRACTOR. INSTALL HOODS IN ACCORDANCE W/ MANUFACTURER'S RECOMMENDATIONS. SUSPEND FROM STRUCTURE AS REQUIRED BY STRUCTURAL ENGINEER & HOOD EQUIPMENT SUPPLIER. COORDINATE INSTALLATION W/ STRUCTURAL CONDITIONS PRIOR TO ROUGH-IN. SEE SCHEDULE & SPECIFICATIONS. REFER TO HOOD DRAWINGS.
19. PROVIDE BALANCING DAMPER WITH YOUNG REGULATOR TYPE REMOTE ACCESS CABLE. ACCESSIBLE AT DIFFUSER FACE.
20. SMOKE DETECTOR IN SUPPLY AIR DUCT FOR RTU-4, AND RETURN AIR DUCT IN RTU-1, 2, 3, 5 UNIT SHUT DOWN. TYPICAL.
21. ROUTE DUCTWORK ABOVE CEILING. MOUNT DIFFUSER AT CEILING.
22. SUSPENDED UNIT HEATER. FURNISH BY OWNER. INSTALLED BY ELECTRICAL CONTRACTOR. REFER TO SELECT E-1.
23. WATER HEATER CONCENTRIC TERMINATION VENT THRU WALL. REFER TO DETAIL 4/M4.
24. PROVIDE FLY FAN AT ENTRANCE. FLY FAN IS TO BE PROVIDED BY OWNERS AND INSTALLED BY MECHANICAL CONTRACTOR. REFER TO SHEET EQ-2 FOR TYPE AND MODEL.
25. FAN FORCED RECESSED MOUNTED CEILING HEATER. FURNISH BY OWNER. INSTALLED BY ELECTRICAL CONTRACTOR. REFER TO SHEET E-1.
26. ROOFTOP UNIT AND UNIT HEATER THERMOSTATS INTERLOCKED WITH CORRESPONDING REMOTE SENSOR. MOUNT ON WALL AT 65" A.F.F.
27. REFER TO METAL CEILING DIFFUSER MOUNTING DETAIL 11/M4.
28. THERMOSTAT (T) REMOTE SENSOR FOR RTU DESIGNATED. INTERLOCK WITH CORRESPONDING THERMOSTAT IN OFFICE. MOUNT ON LOW WALL. @ 45" A.F.F.



1 MECHANICAL FLOOR PLAN
M1 SCALE: 1/4" = 1'-0" NORTH

PROFESSIONAL SEAL

PROFESSIONAL IN CHARGE
R. SMITH
PROJECT MANAGER
A. HELOW
QUALITY CONTROL
A. HELOW
DRAWN BY
Y. YANG

PROJECT NAME
BUBBA'S 33

GASTONIA
NORTH CAROLINA
3287 E. FRANKLIN BLVD.



PROJECT NUMBER
20181046.0

SHEET TITLE
MECHANICAL FLOOR PLAN

SHEET NUMBER
M1