

**ISSUE/REVISION RECORD**

DATE	DESCRIPTION
07/28/19	COORDINATION SET
02/20/19	HEALTH SUBMITTAL
04/24/19	HEALTH RESPONSE
05/03/19	PERMIT/BD SET

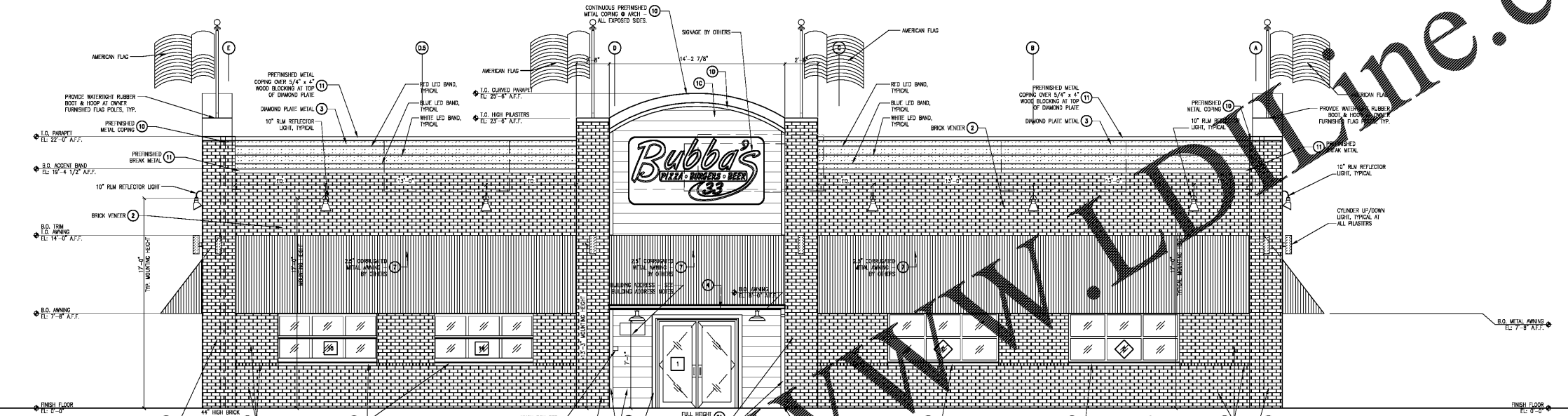
**EXTERIOR FINISH SCHEDULE**

(A)	NOT USED	
(B)	NOT USED	
(C)	FIBER CEMENT SIDING	FIBER CEMENT SIDING BY "ALLIUM" SURFACE INTERLOCKING TEXTURED GRAY CONTACT: 1-800-425-9872
(D)	FIBER CEMENT TRIM	COLOR: STEVEN-WILLIAMS (LESS WHITE RIGID BRICK) FORMULA (7/6 GALLON) CO-COLORANT: 02 02 64 328 W1-WHITE 8 30 B1-BLACK 14 30 1 1 L1-BLUE 12 62 - 1 R3-WHICHITA 10 5 - 1
(E)	BRICK & BRICK ROWLOCK (RED)	STATEWIDE BRICK OLIVE JEFFERSON ARTISTE TUMBLED, SIZE: QUEEN
(F)	BRICK & BRICK ROWLOCK (WHITE)	STATEWIDE BRICK SHEPWOOD FOREST ARTISTE TUMBLED, SIZE: QUEEN
(G)	DIAMOND PLATE ACCENT	DIAMOND PLATE W/POLISHED FINISH (SCORED & ENGRAVED) ALUMINUM ARCHITECTURAL PRODUCTS 5555 ALBANY BLVD. FASTENERS: 31023 CONTACT: 861-7774
(H)	DIAMOND PLATE	
(I)	GUTTER	PREFINISHED - 24 GAUGE TO MATCH GALVALUME
(J)	METAL CLIPS	24 GAUGE TO MATCH ADJACENT WALL COLOR
(K)	ALUMINUM DOORS	DARK BRONZE ANODIZED FINISH KAMETER 655 GLENWOOD COURT NORCROSS, GA 30092 CONTACT: 770-448-5555
(L)	METAL WALLS & METAL GATES	PREFINISHED SAUVIN BLACK - BY LIBERTY STEEL
(M)	METAL ROOF	METAL SALES MANUFACTURING CORRUGATED METAL 26 GAUGE COLOR: GALVALUME PHONE: 800-747-1206
(N)	METAL DOORS, FRAMES, SITES, COLUMNS	STEVEN-WILLIAMS ENAMEL GLASS BLACK - PRIMEK/70 FINISH COATS
(O)	DUMPSIDE BRICK WALL	24 GAUGE STEVEN-WILLIAMS (LESS WHITE RIGID BRICK) FORMULA (7/6 GALLON) CO-COLORANT: 02 02 64 328 W1-WHITE 8 30 B1-BLACK 14 30 1 1 L1-BLUE 12 62 - 1 R3-WHICHITA 10 5 - 1
(P)	METAL COPING	PREFINISHED WHITE
(Q)	METAL COPING & BRICK METAL FLASHING	PREFINISHED GALVALUME
(R)	PRECAST CONCRETE SILL	COLOR: NATURAL

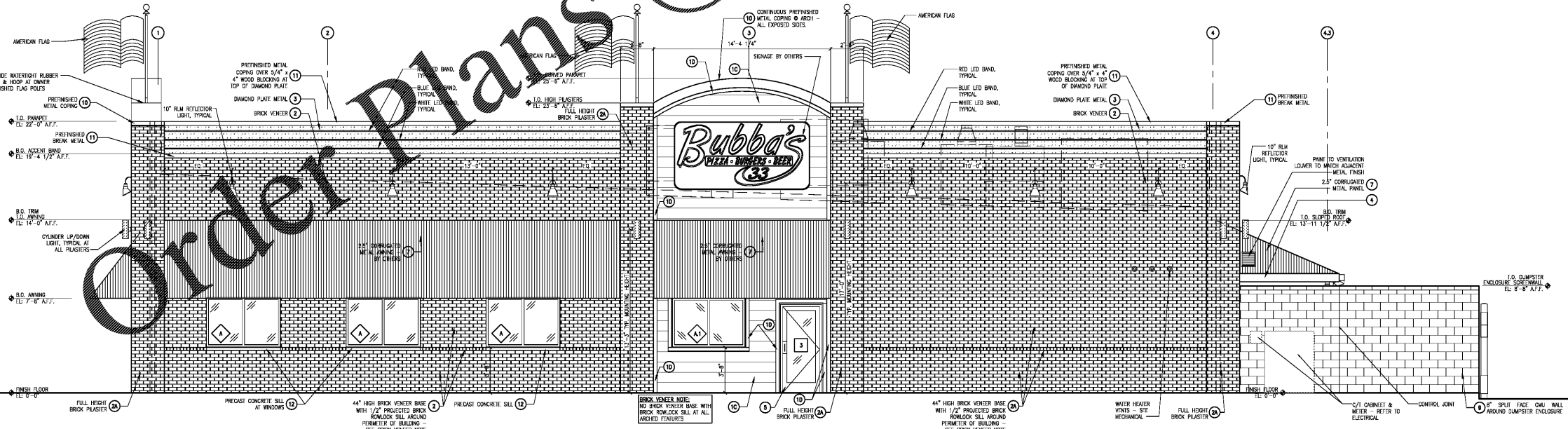
NOTE:  
 1. FOR ALL LIGHTING INCLUDING WHITE LED, REFER TO ELECTRICAL  
 2. NEW BUILDING SHALL HAVE APPROVED ADDRESS NUMBERS PLACED IN POSITION TO BE PLAINLY VISIBLE FROM STREET OR ROAD FRONTING PROPERTY. THESE NUMBERS SHALL CONTRAST WITH THEIR BACKGROUND.

**BRICK VENEER NOTE (CRITICAL):**

- QUEEN SIZE (2 3/4" HIGH x 2 3/4" DEEP x 7 5/8" LONG)
- ALL HORIZONTAL MORTAR JOINTS TO BE 1/2"
- ALL VERTICAL MORTAR JOINTS TO BE 3/8"



1 FRONT ELEVATION (NORTH)  
 SCALE: 1/4" = 1'-0"



2 RIGHT SIDE ELEVATION (WEST)  
 SCALE: 1/4" = 1'-0"

PROFESSIONAL SEAL

PROFESSIONAL IN CHARGE  
 S. KOUGAS  
 PROJECT MANAGER  
 E. ARELLANO  
 QUALITY CONTROL  
 S. KOUGAS  
 DRAWN BY  
 E. ARELLANO

PROJECT NAME  
**BUBBA'S 33**

**GASTONIA**  
 NORTH CAROLINA

3287 E. FRANKLIN BLVD.



PROJECT NUMBER  
 20181046.0

SHEET TITLE

EXTERIOR ELEVATIONS

SHEET NUMBER  
**A3**