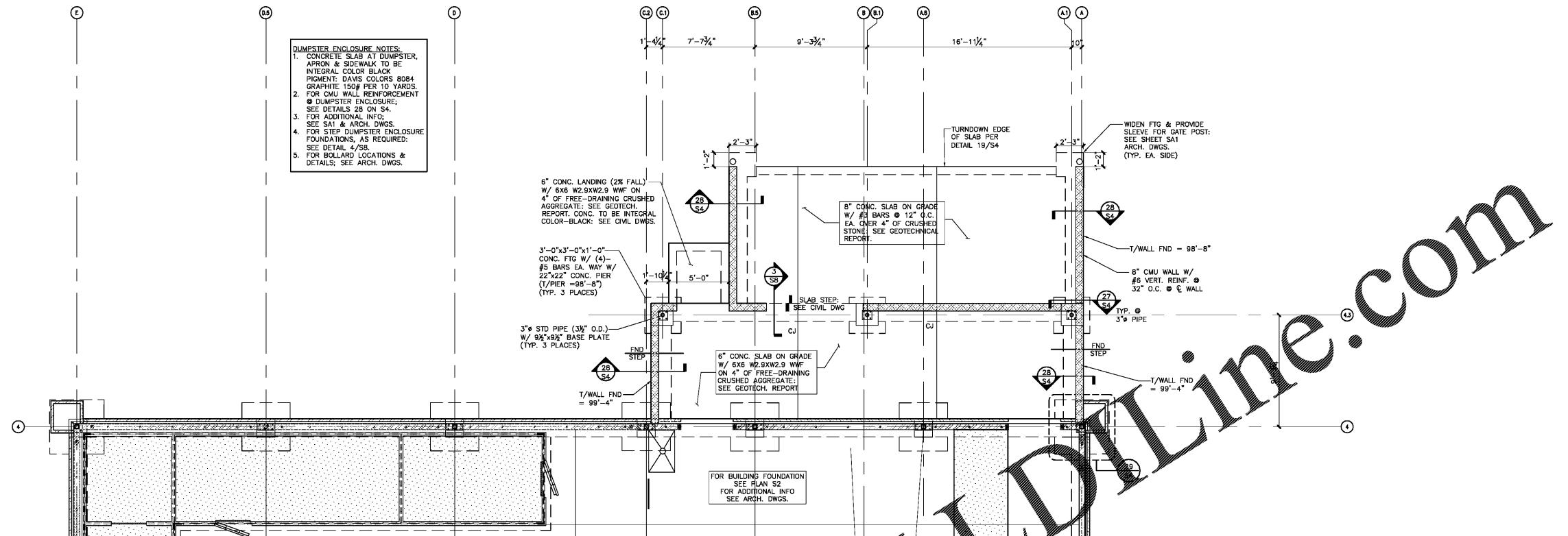


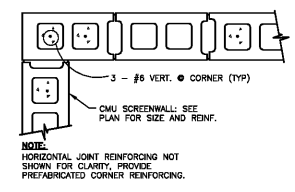
ISSUE/REVISION RECORD	
DATE	DESCRIPTION
05/28/19	COORDINATION SET
02/20/19	HEALTH SUBMITTAL
04/24/19	HEALTH RESPONSE
05/03/19	PERMIT/BD SET

- DUMPSTER ENCLOSURE NOTES:**
- CONCRETE SLAB AT DUMPSTER, APRON & SIDEWALK TO BE INTEGRAL COLOR BLACK PIGMENT DAVIS COLORS 8084 GRAPHITE 150# PER 10 YARDS.
 - FOR CMU WALL REINFORCEMENT @ DUMPSTER ENCLOSURE: SEE DETAILS 2B ON S4.
 - FOR ADDITIONAL INFO: SEE SAI & ARCH. DWGS.
 - FOR STEP DUMPSTER ENCLOSURE FOUNDATIONS, AS REQUIRED: SEE DETAIL 4/S8.
 - FOR BOLLARD LOCATIONS & DETAILS: SEE ARCH. DWGS.

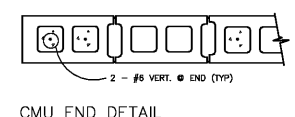


DUMPSTER ENCLOSURE FOUNDATION PLAN

SCALE 1/4\"/>



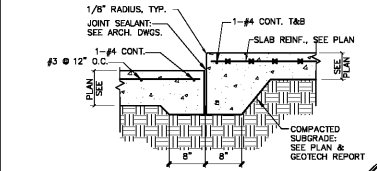
CMU CORNER DETAIL



CMU END DETAIL

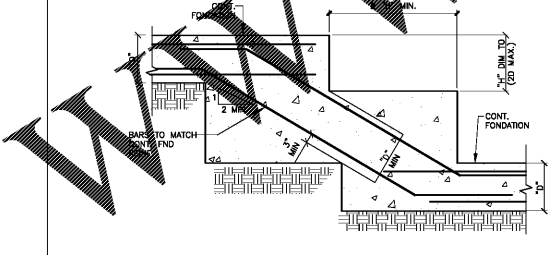
TYP. CMU DETAILS

SCALE 3/4\"/>



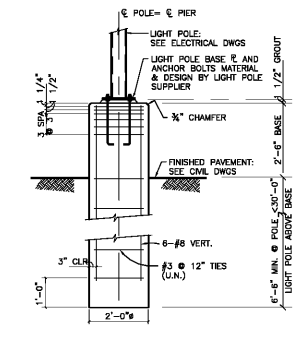
STEPPED SLAB DETAIL

SCALE 3/4\"/>



STEPPED FND DETAIL

SCALE 3/4\"/>

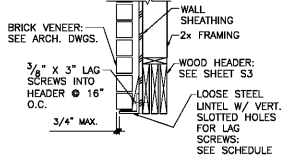


LIGHT POLE FND DETAIL

SCALE 1/4\"/>

LOOSE STEEL LINTEL FOR VENEER

SPAN LIMITS	ANGLE SIZE	MINIMUM BEARING
0'-0\"/>		
4'-1\"/>		
6'-1\"/>		



LOOSE STEEL LINTEL DETAIL

PROFESSIONAL IN CHARGE
B. BORNHORN
PROJECT MANAGER
M. HWS
QUALITY CONTROL
M. HWS
DRAWN BY
C. YEA

PROJECT NAME
BUBBA'S 33

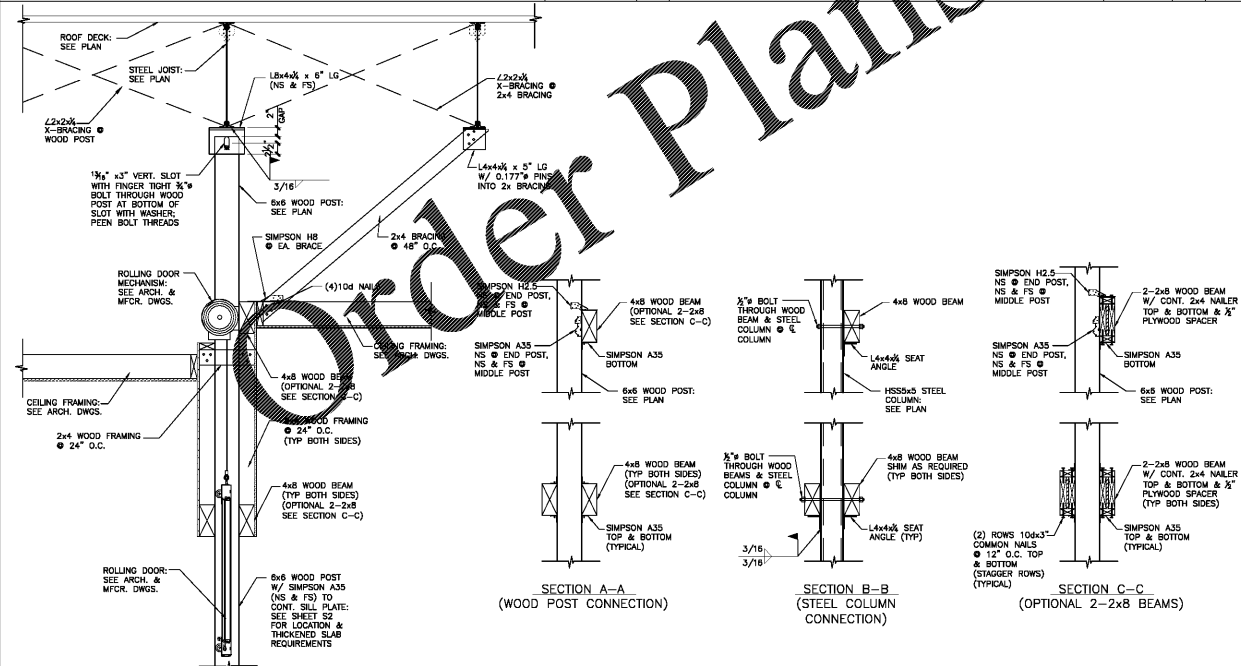
GASTONIA NORTH CAROLINA
3287 E. FRANKLIN BLVD



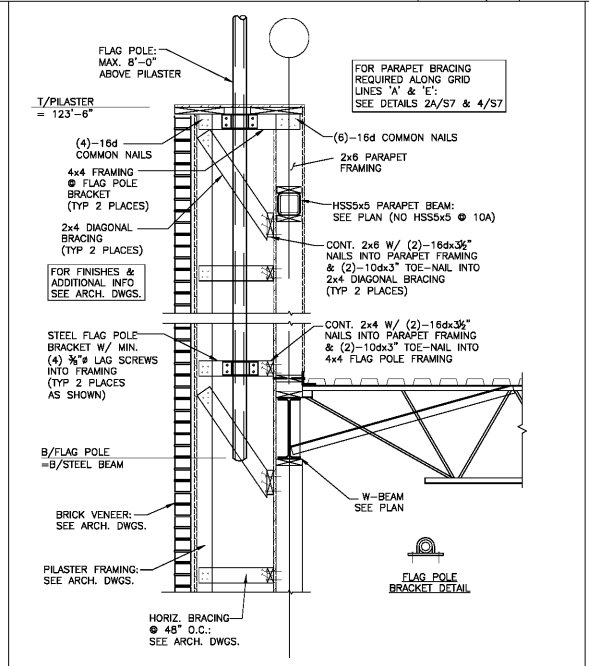
PROJECT NUMBER
20181046.0

SHEET TITLE
DUMPSTER ENCLOSURE PLANS

SHEET NUMBER
S8



ROLLING DOOR FRAMING DETAILS



FLAG POLE DETAIL

SCALE 3/4\"/>

8/8A