

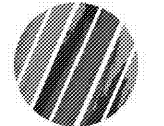
222 cloister court
chapel hill, nc 27514
919.401.8586
www.cra-ae.com



Reece, Noland & McElrath, Inc.
94 Main Street
Canton, North Carolina 28716
Phone: 828.252.1111 Fax: 828.252.1112
www.rnmengineers.com



Cedar Ridge High School
Classroom Addition
Orange County Schools
1125 New Grady Brown School Road
Hillsborough, North Carolina



no. revisions

The use of these plans and specifications shall be restricted to the project for which they were prepared and shall not be used for any other project without the prior written consent of the engineer. The engineer shall not be responsible for any errors or omissions in these plans and specifications, nor for any consequences arising therefrom, whether or not the same are caused in whole or in part by the negligence of the engineer.

drawn checked
FWC JSD

Electrical Riser

sheet

E6.1

project no. 1716

date 4/25/19

EXISTING PANEL 'EP', EXISTING LOADS SHOWN LIGHT, NEW LOADS SHOWN DARKER

PANEL EDP SCHEDULE

Connected Load: 21.19 KVA

Wire: (existing)

Conduit: (existing)

DESCRIPTION	COND.	WIRE	LOAD	BREAKER	CIRCUIT NUMBER	BREAKER	LOAD	WIRE	COND.	DESCRIPTION
1000V 125A 1P/2P	1"	3/4"	300	30	1	30	300	3/4"	1"	1000V 125A 1P/2P
1000V 125A 2P/2P	1"	3/4"	300	30	2	300	3/4"	1"	1000V 125A 2P/2P	
1000V 125A 3P/3P	1"	3/4"	300	30	3	300	3/4"	1"	1000V 125A 3P/3P	
1000V 125A 4P/4P	1"	3/4"	300	30	4	300	3/4"	1"	1000V 125A 4P/4P	
1000V 125A 1P/1P	1"	3/4"	300	30	5	300	3/4"	1"	1000V 125A 1P/1P	
1000V 125A 2P/1P	1"	3/4"	300	30	6	300	3/4"	1"	1000V 125A 2P/1P	
1000V 125A 3P/1P	1"	3/4"	300	30	7	300	3/4"	1"	1000V 125A 3P/1P	
1000V 125A 4P/1P	1"	3/4"	300	30	8	300	3/4"	1"	1000V 125A 4P/1P	
1000V 125A 1P/2P	1"	3/4"	300	30	9	300	3/4"	1"	1000V 125A 1P/2P	
1000V 125A 2P/2P	1"	3/4"	300	30	10	300	3/4"	1"	1000V 125A 2P/2P	
1000V 125A 3P/2P	1"	3/4"	300	30	11	300	3/4"	1"	1000V 125A 3P/2P	
1000V 125A 4P/2P	1"	3/4"	300	30	12	300	3/4"	1"	1000V 125A 4P/2P	
1000V 125A 1P/3P	1"	3/4"	300	30	13	300	3/4"	1"	1000V 125A 1P/3P	
1000V 125A 2P/3P	1"	3/4"	300	30	14	300	3/4"	1"	1000V 125A 2P/3P	
1000V 125A 3P/3P	1"	3/4"	300	30	15	300	3/4"	1"	1000V 125A 3P/3P	
1000V 125A 4P/3P	1"	3/4"	300	30	16	300	3/4"	1"	1000V 125A 4P/3P	
1000V 125A 1P/4P	1"	3/4"	300	30	17	300	3/4"	1"	1000V 125A 1P/4P	
1000V 125A 2P/4P	1"	3/4"	300	30	18	300	3/4"	1"	1000V 125A 2P/4P	
1000V 125A 3P/4P	1"	3/4"	300	30	19	300	3/4"	1"	1000V 125A 3P/4P	
1000V 125A 4P/4P	1"	3/4"	300	30	20	300	3/4"	1"	1000V 125A 4P/4P	

EXISTING PANEL 'EP', EXISTING LOADS SHOWN LIGHT, NEW LOADS SHOWN DARKER

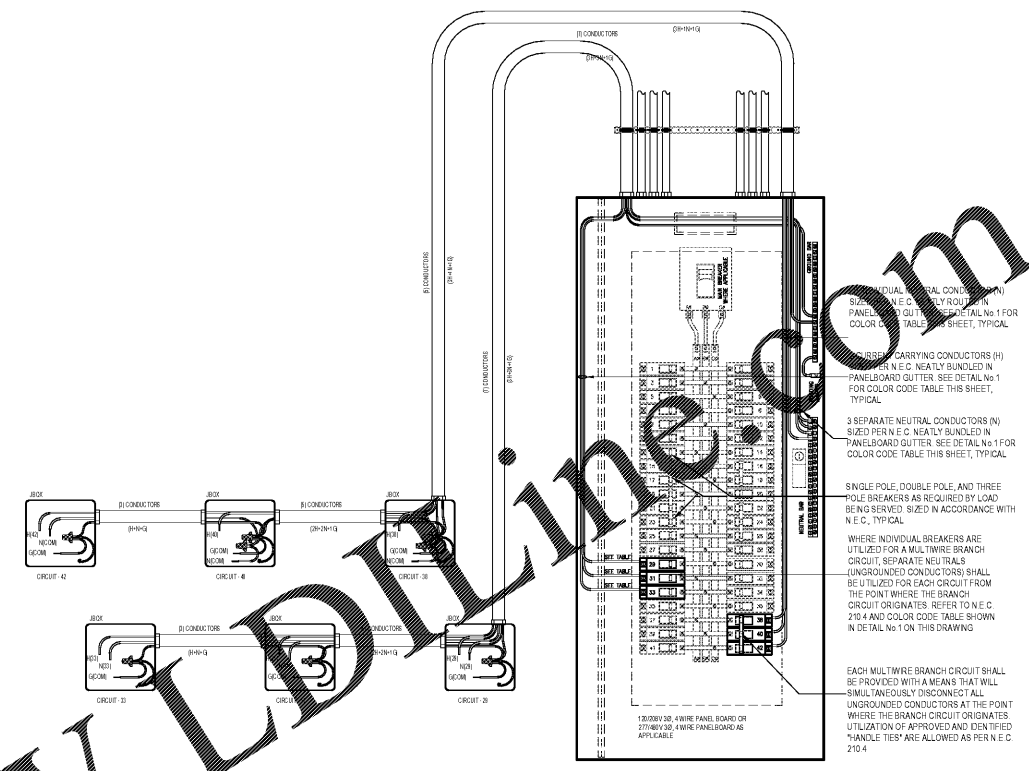
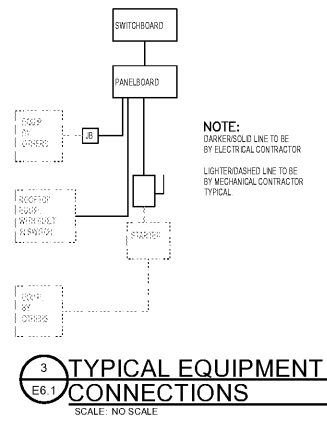
PANEL EP SCHEDULE

Connected Load: 4.28 KVA

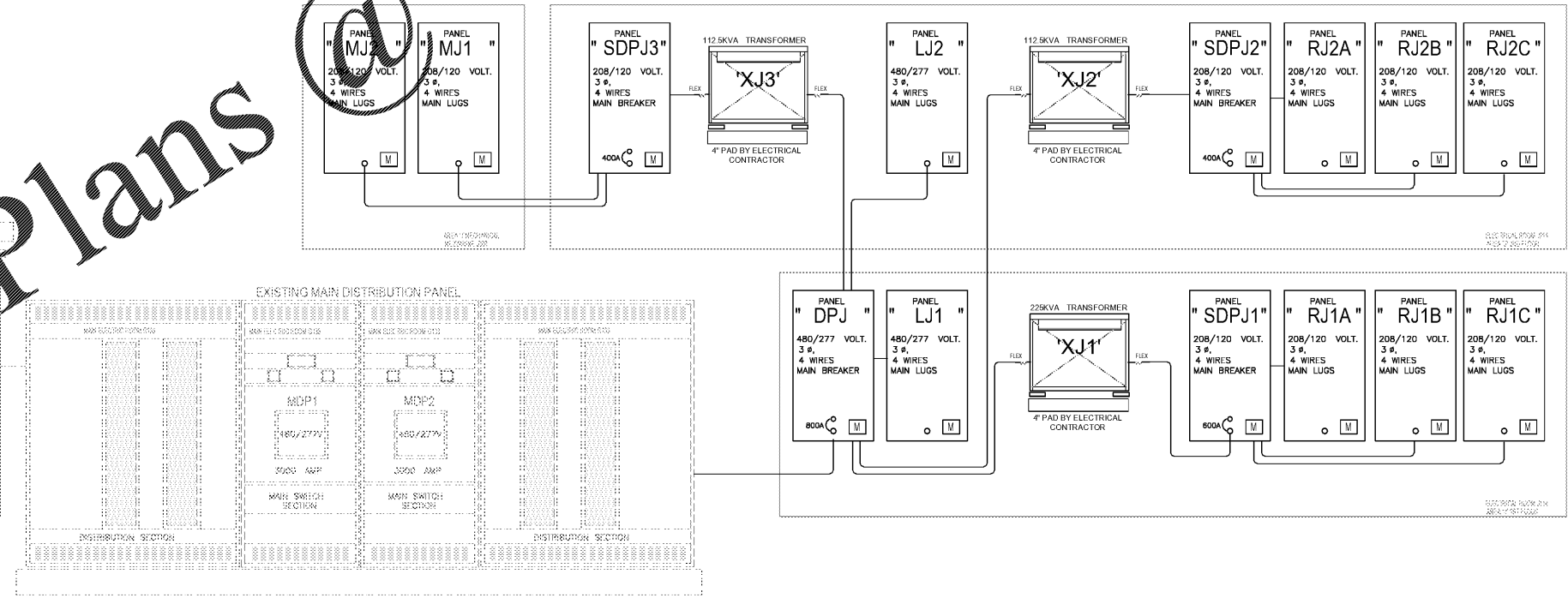
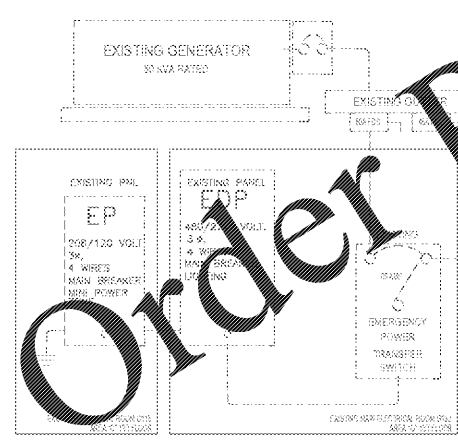
Wire: 4#1 1#6"

Conduit: 1-1/2"

DESCRIPTION	COND.	WIRE	LOAD	BREAKER	CIRCUIT NUMBER	BREAKER	LOAD	WIRE	COND.	DESCRIPTION
1000V 125A 1P/1P	1"	3/4"	300	30	1	300	3/4"	1"	1000V 125A 1P/1P	
1000V 125A 2P/2P	1"	3/4"	300	30	2	300	3/4"	1"	1000V 125A 2P/2P	
1000V 125A 3P/3P	1"	3/4"	300	30	3	300	3/4"	1"	1000V 125A 3P/3P	
1000V 125A 4P/4P	1"	3/4"	300	30	4	300	3/4"	1"	1000V 125A 4P/4P	
1000V 125A 1P/2P	1"	3/4"	300	30	5	300	3/4"	1"	1000V 125A 1P/2P	
1000V 125A 2P/2P	1"	3/4"	300	30	6	300	3/4"	1"	1000V 125A 2P/2P	
1000V 125A 3P/2P	1"	3/4"	300	30	7	300	3/4"	1"	1000V 125A 3P/2P	
1000V 125A 4P/2P	1"	3/4"	300	30	8	300	3/4"	1"	1000V 125A 4P/2P	
1000V 125A 1P/3P	1"	3/4"	300	30	9	300	3/4"	1"	1000V 125A 1P/3P	
1000V 125A 2P/3P	1"	3/4"	300	30	10	300	3/4"	1"	1000V 125A 2P/3P	
1000V 125A 3P/3P	1"	3/4"	300	30	11	300	3/4"	1"	1000V 125A 3P/3P	
1000V 125A 4P/3P	1"	3/4"	300	30	12	300	3/4"	1"	1000V 125A 4P/3P	
1000V 125A 1P/4P	1"	3/4"	300	30	13	300	3/4"	1"	1000V 125A 1P/4P	
1000V 125A 2P/4P	1"	3/4"	300	30	14	300	3/4"	1"	1000V 125A 2P/4P	
1000V 125A 3P/4P	1"	3/4"	300	30	15	300	3/4"	1"	1000V 125A 3P/4P	
1000V 125A 4P/4P	1"	3/4"	300	30	16	300	3/4"	1"	1000V 125A 4P/4P	



Order Plans



THIS DRAWING IS NOT TO BE SCALED FOR CONSTRUCTION PURPOSES. THE SCALE WHEN INDICATED IS FOR GENERAL REFERENCE ONLY.