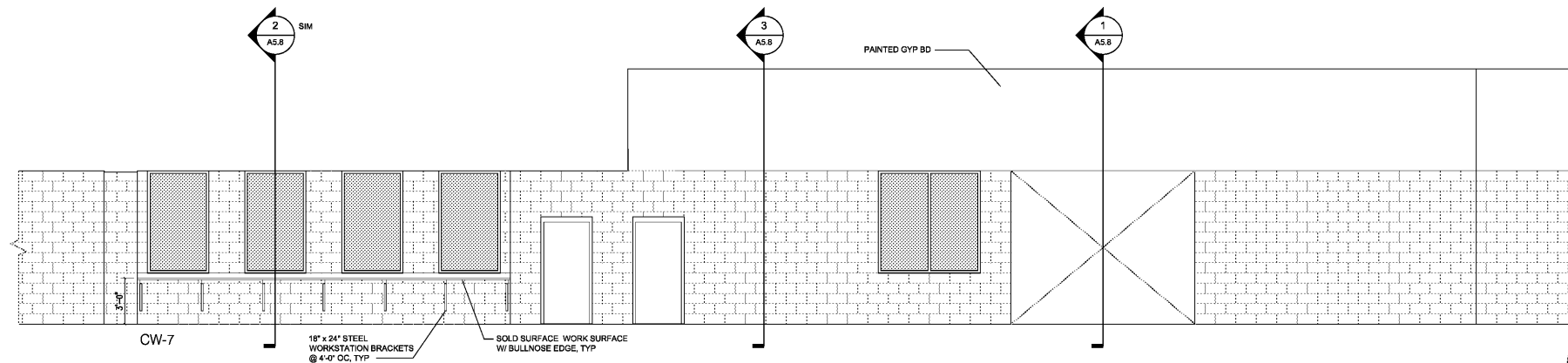
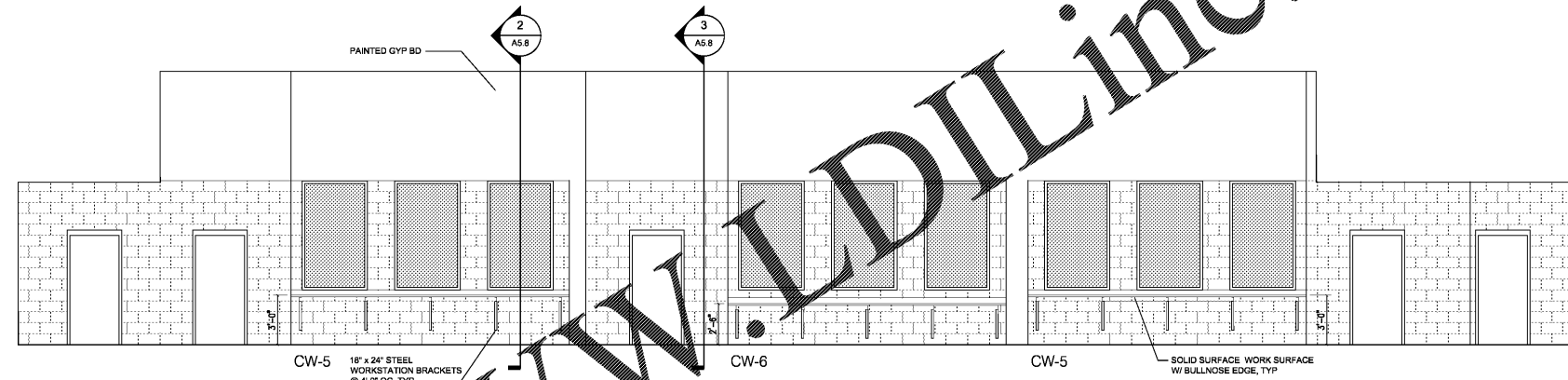


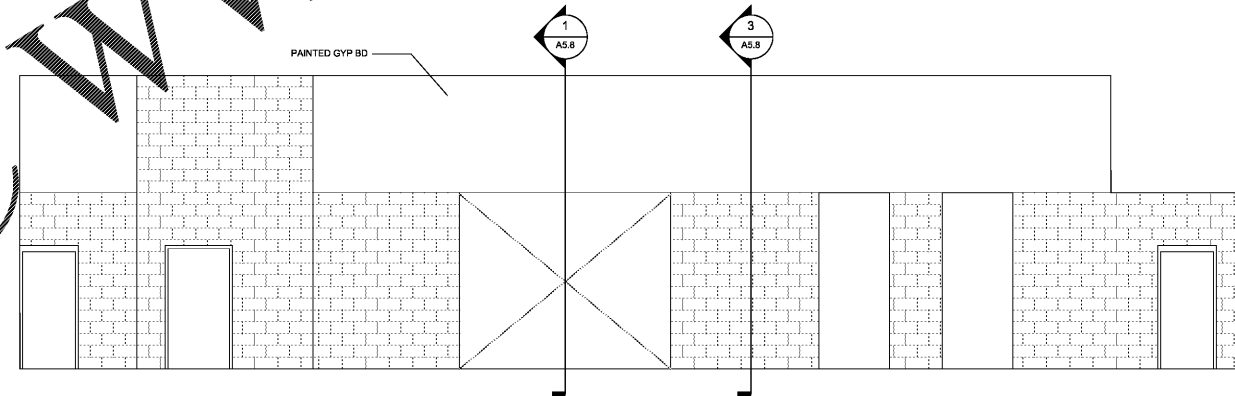
222 cloister  
court chapel  
hill, nc 27514  
919.401.8586  
www.cra-ae.com



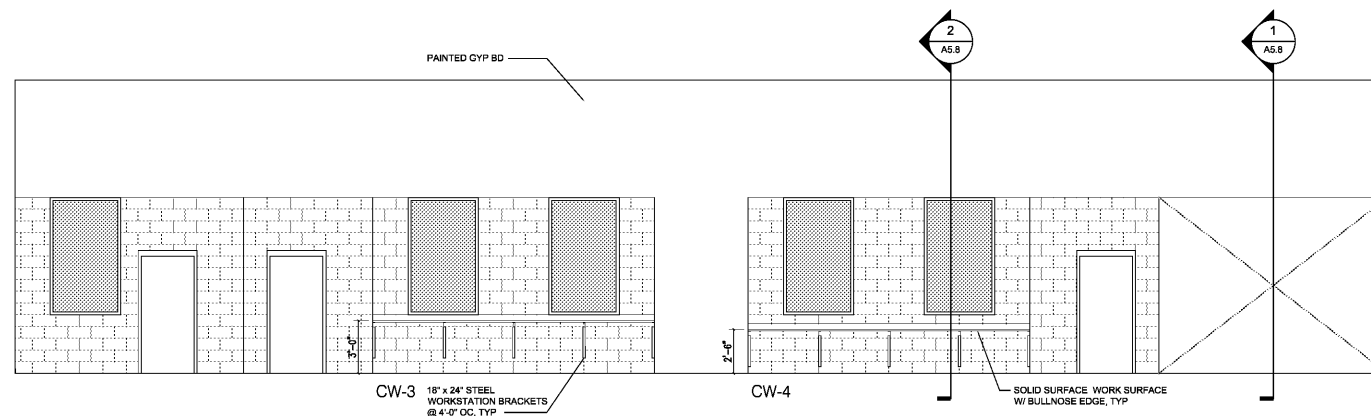
4 Elevation - Learning Commons South  
Scale: 1/4" = 1'-0"



3 Elevation - Learning Commons West  
Scale: 1/4" = 1'-0"



2 Elevation - Learning Commons North  
Scale: 1/4" = 1'-0"

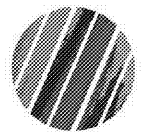


1 Elevation - Learning Commons East  
Scale: 1/4" = 1'-0"

Order Plans @ WWW.IDILine.com



Cedar Ridge High School  
Classroom Addition  
Orange County Schools  
1125 New Grady Brown School Road  
Hillsborough, North Carolina



no. revisions

The use of these plans and specifications shall be restricted to the original site for which they were prepared and published. They shall be expressly limited to such use. No use, reproduction, or publication by any means, in whole or in part, is permitted. Title to the plans and specifications remain in the architect without obligation to be returned upon request to the architect. Mutual reliance upon these plans and specifications shall constitute a binding contract. Mutual reliance upon these plans and specifications shall constitute a binding contract.

drawn checked

Interior Elevations,  
Learning Commons

sheet

A4.7

project no. 1716

date 4/25/19