

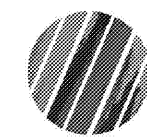


222 cloister
 court chapel
 hill, nc 27514
 919.401.8586
 www.cra-ae.com



4/25/2019

Cedar Ridge High School
 Classroom Addition
 Orange County Schools
 1125 New Grady Brown School Road
 Hillsborough, North Carolina



no.	revisions

The use of these plans and specifications shall be restricted to the original site for which they were prepared and published. They shall be accurate as to such use. No use, reproduction, or publication for any other project, in whole or in part, without the express written consent of the architect is to be returned upon request to the architect. Mutual consent with these plans and specifications shall constitute prior notice of any change or modification to these specifications.

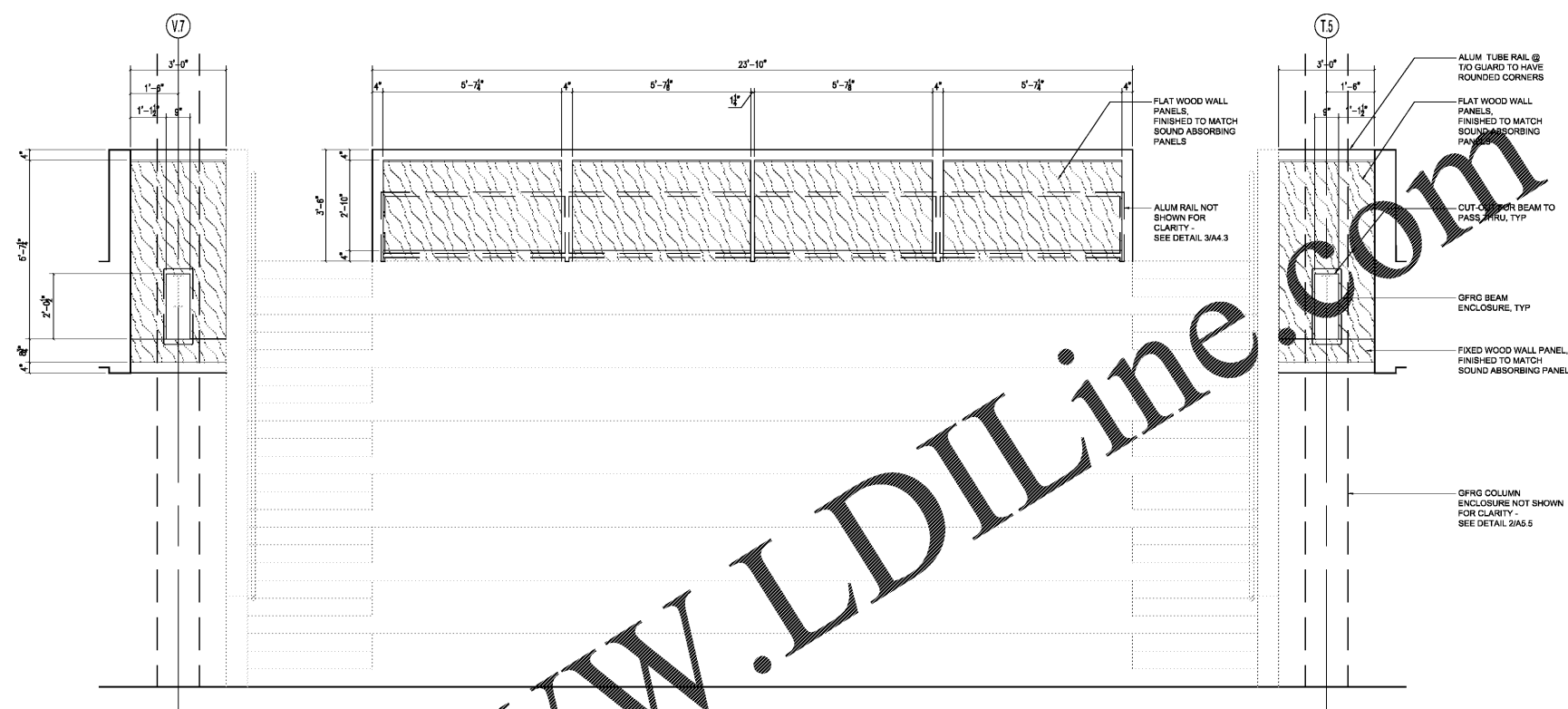
drawn checked
 dld

sheet

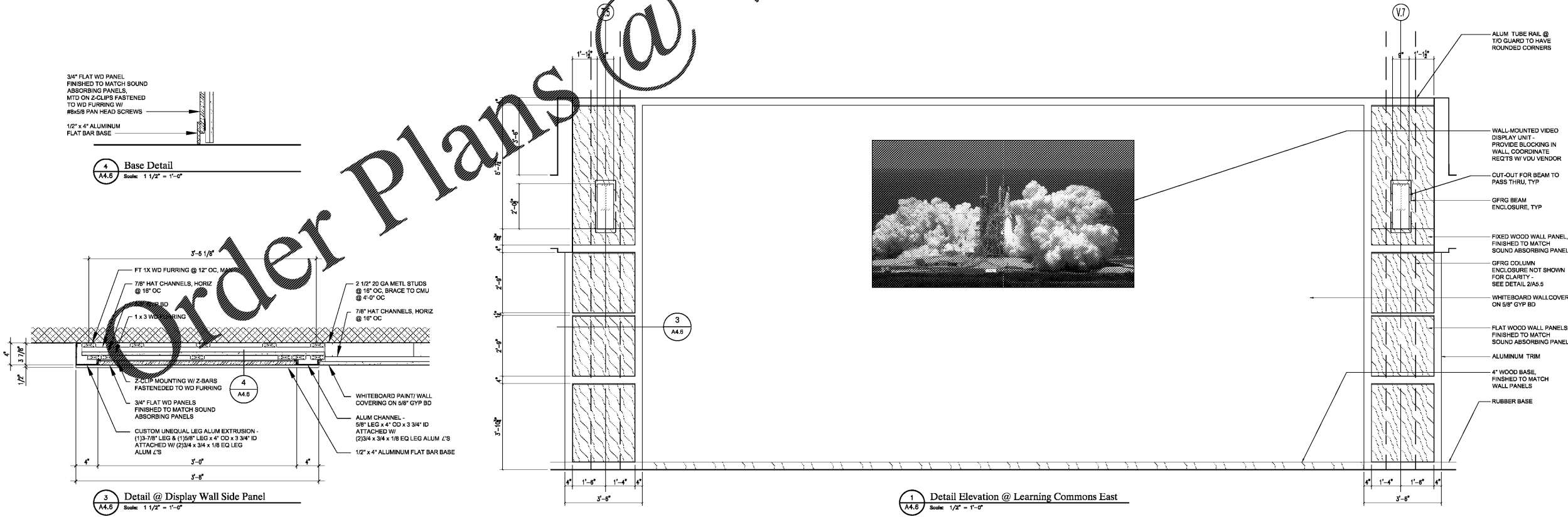
A4.6

project no. 1716

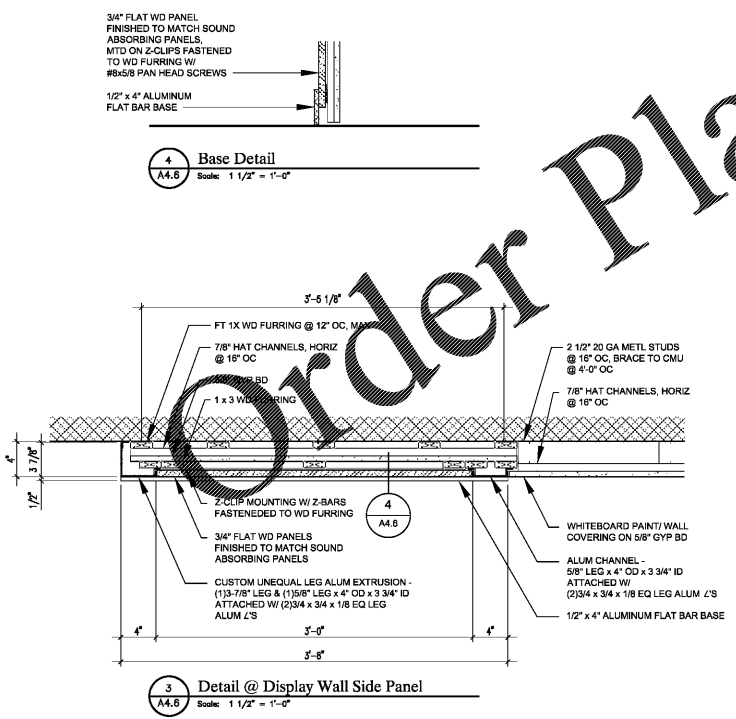
date 4/25/19



2 Level 2 Spandrel & Back Rail @ Learning Commons West
 A4.6 Scale: 1/2" = 1'-0"



1 Detail Elevation @ Learning Commons East
 A4.6 Scale: 1/2" = 1'-0"



4 Base Detail
 A4.6 Scale: 1/2" = 1'-0"

3 Detail @ Display Wall Side Panel
 A4.6 Scale: 1/2" = 1'-0"

Order Plans @ WWW.LDILine.com