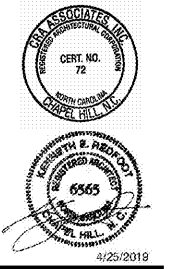
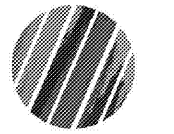


222 cloister  
court chapel  
hill, nc 27514  
919.401.8586  
www.cra-ae.com



4/25/2019

Cedar Ridge High School  
Classroom Addition  
Orange County Schools  
1125 New Grady Brown School Road  
Hillsborough, North Carolina



no.	revisions

The use of these plans and specifications shall be restricted to the original site for which they were prepared and published. They shall be deemed void if they are used for any other project, in whole or in part, or if they are reproduced, in whole or in part, without the written consent of the architect. The use of these plans and specifications shall be restricted to the original site for which they were prepared and published. They shall be deemed void if they are used for any other project, in whole or in part, or if they are reproduced, in whole or in part, without the written consent of the architect.

drawn checked  
dlj

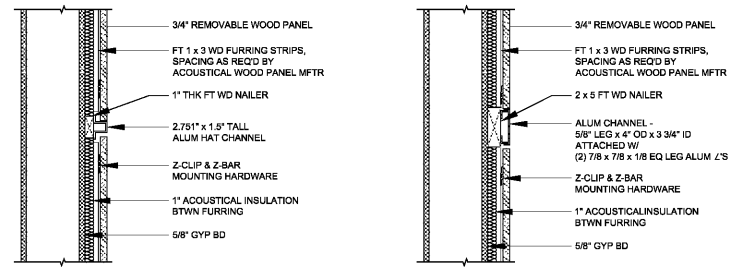
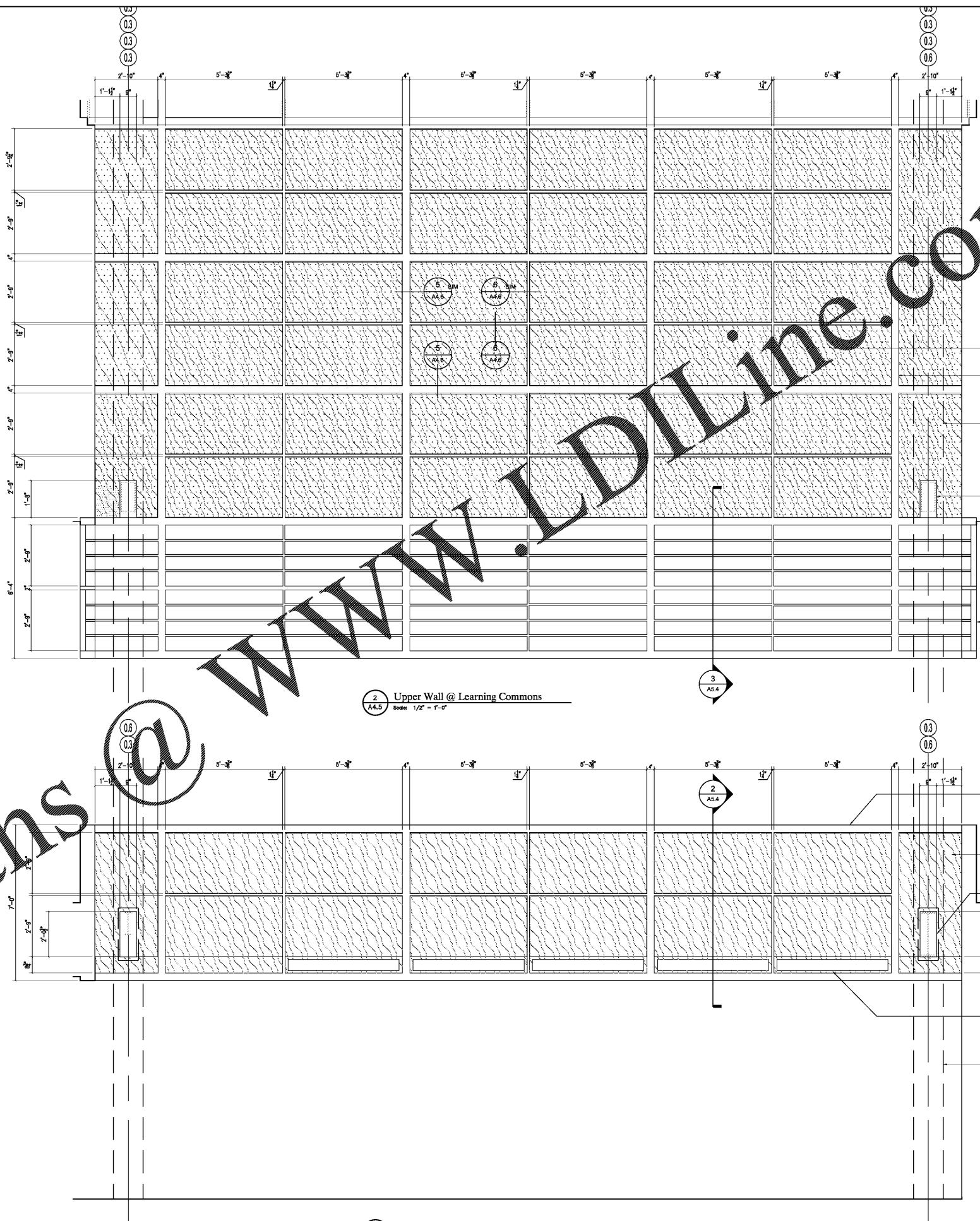
Detail Elevations,  
Learning Commons

sheet

A4.5

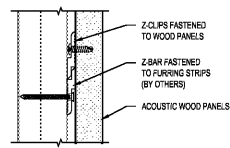
project no. 1716

date 4/25/19

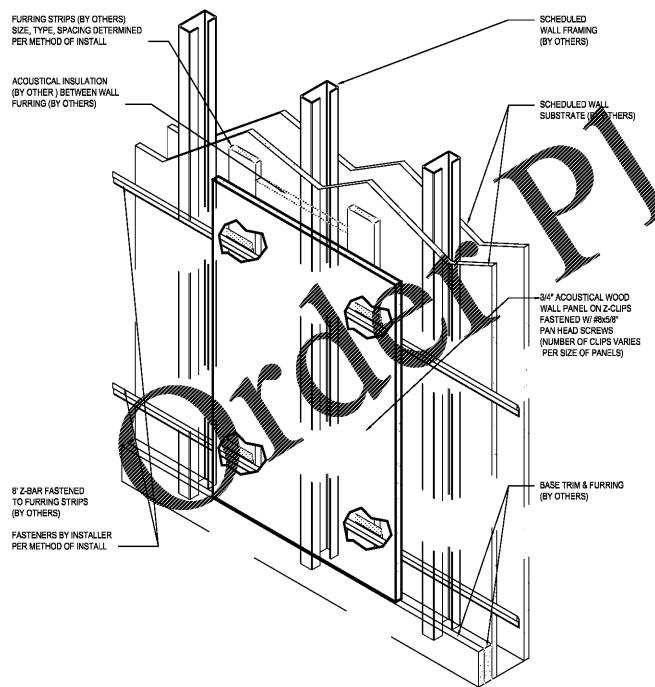


4 Aluminum Trim Detail  
Scale: 1 1/2" = 1'-0"

5 Aluminum Trim Detail  
Scale: 1 1/2" = 1'-0"



4 Typical Panel Attachment Detail  
Scale: 6" = 1'-0"



3 Typical Panel Mounting Detail  
Scale: 1 1/2" = 1'-0"

2 Upper Wall @ Learning Commons  
Scale: 1/2" = 1'-0"

1 Level 2 Spandrel @ Learning Commons North  
Scale: 1/2" = 1'-0"