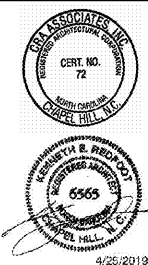
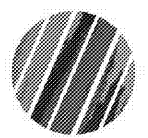


222 cloister court  
 chapel hill, nc 27514  
 919.401.8586  
 www.cra-ae.com



4/25/2019

Cedar Ridge High School  
 Classroom Addition  
 Orange County Schools  
 1125 New Grady Brown School Road  
 Hillsborough, North Carolina



no. revisions

The use of these plans and specifications shall be restricted to the original site for which they were prepared and maintained. They shall be amended by any change orders, modifications, or addendums. The use of these plans and specifications shall be restricted to the original site for which they were prepared and maintained. They shall be amended by any change orders, modifications, or addendums.

drawn checked  
 dtc ee

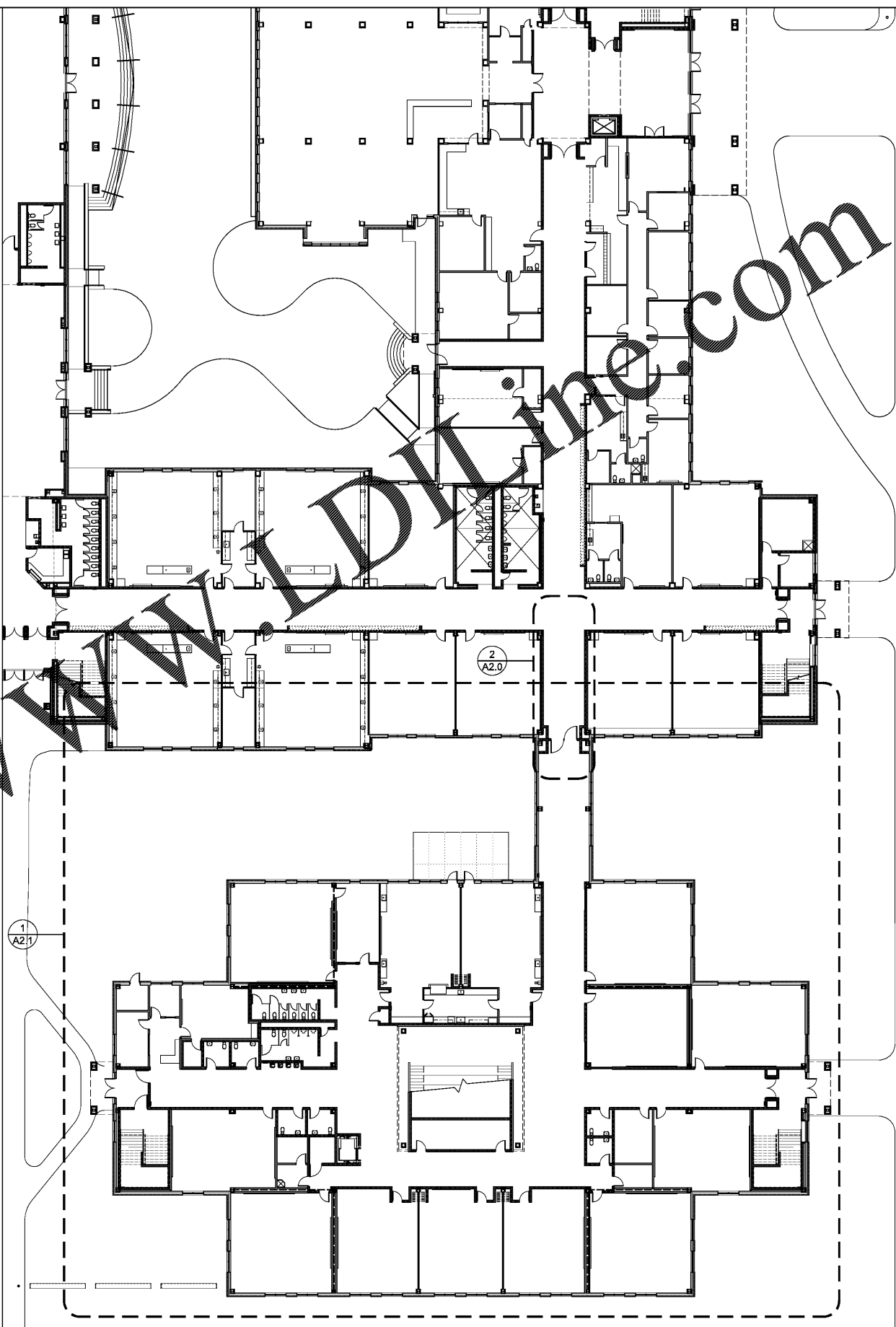
Composite  
 Floor  
 Plans

sheet

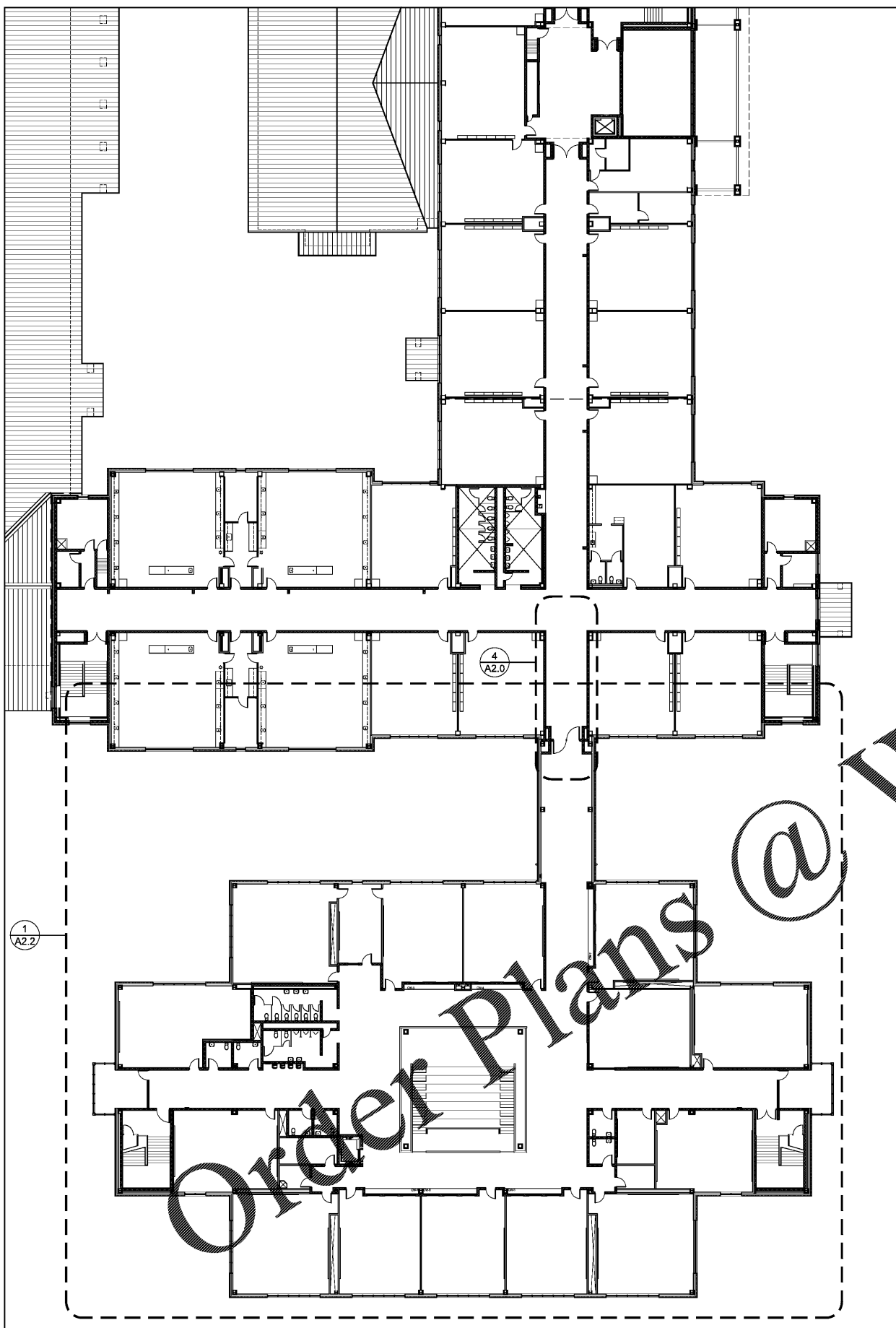
**A1.1**

project no. 1716

date 4/25/19



1 First Floor Composite Plan  
 A1.1 Scale: 1/16" = 1'-0"



2 Second Floor Composite Plan  
 A1.1 Scale: 1/16" = 1'-0"

Order Plans @ [www.dine.com](http://www.dine.com)