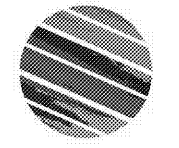


222 cloister court  
 chapel hill, nc  
 27514  
 919.401.8586  
 www.cra-oe.com

LHC STRUCTURAL  
 ENGINEERS  
 1331 Sunday Drive, Suite 121  
 Raleigh, North Carolina 27607  
 919.832.5587 919.833.3929 fax  
 NC License # C-1629  
 LHC Project 1022



Cedar Ridge High School  
 Classroom Addition  
 Orange County Schools  
 1125 New Grady Brown School Road  
 Hillsborough, North Carolina



no. revisions

The use of these plans and specifications shall be restricted to the original site for which they were prepared and publication thereof is expressly limited to such. No reproduction, in whole or in part, or modification, or alteration, or distribution, or use for any other project, without the express written consent of the engineer. The engineer shall not be responsible for any errors or omissions on these plans and specifications, or for any consequences arising therefrom.

drawn DLK checked BL

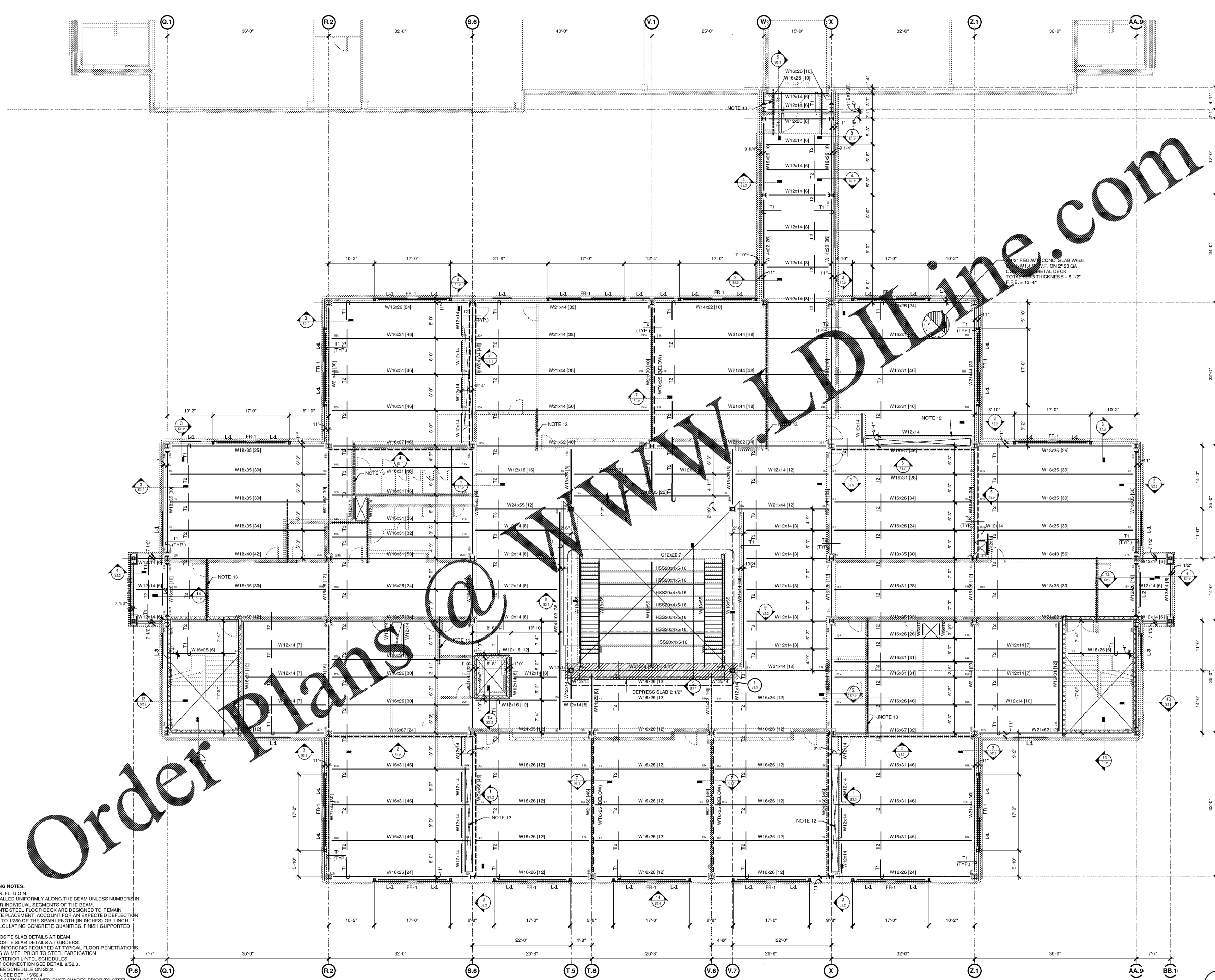
SECOND FLOOR  
 FRAMING PLAN

sheet

S1.2

project no. 1716

date 4/25/19



- STRUCTURAL STEEL FLOOR FRAMING NOTES:
1. TOP OF STEEL - 5/8" BELOW FR. FL. U.O.H.
  2. SHEAR STUDS ARE TO BE INSTALLED UNIFORMLY ALONG THE BEAM UNLESS NUMBERS IN BRACKETS ARE INDICATED FOR INDIVIDUAL SEGMENTS OF THE BEAM.
  3. FLOOR FRAMING AND COMPOSITE STEEL FLOOR DECK ARE DESIGNED TO REMAIN UNSHORED DURING CONCRETE PLACEMENT. ACCOUNT FOR AN EXPECTED DEFLECTION IN BEAMS AND GIRDERS OF UP TO 1/260 OF THE SPAN LENGTH (IN INCHES OR 1 INCH, WHICHEVER IS LESS WHEN CALCULATING CONCRETE QUANTITIES. FINISH SUPPORTED SLABS FLAT AND LEVEL.
  4. SEE S/S2.2 FOR TYPICAL COMPOSITE SLAB DETAILS AT BEAM.
  5. SEE S/S2.2 FOR TYPICAL COMPOSITE SLAB DETAILS AT GIRDERS.
  6. SEE S/S2.2 FOR ADDITIONAL REINFORCING REQUIRED AT TYPICAL FLOOR PENETRATIONS.
  7. VERIFY ELEVATOR DIMENSIONS W/ MFR. PRIOR TO STEEL FABRICATION.
  8. SEE S/S2.2 FOR INTERIOR AND EXTERIOR LINTEL SCHEDULES.
  9. \_\_\_\_\_ DENOTES RIGID MOMENT CONNECTION SEE DETAIL S/S2.3.
  10. T1 DENOTES SLAB TOP BAR. SEE SCHEDULE ON S/S2.2.
  11. FR 1 DENOTES STEEL FRAMES. SEE DET. 15/S2.4.
  12. G.C. TO COORDINATE SEE @ LOCATION OF FRAMED DUCT CHASES PRIOR TO STEEL FABRICATION. PROVIDE W/8x10 IN-FILL BEAMS.
  13. PROVIDE 1-#6 IN FLUTE. SEE DETAIL 9/S2.2.

SECOND FLOOR FRAMING PLAN  
 S1.2 1/8" = 1'-0"