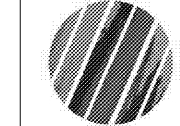




222 cloister court
chapel hill, nc 27514
919.401.8586
www.cra-ae.com



Cedar Ridge High School
Classroom Addition
Orange County Schools
1125 New Grady Brown School Road
Hillsborough, North Carolina



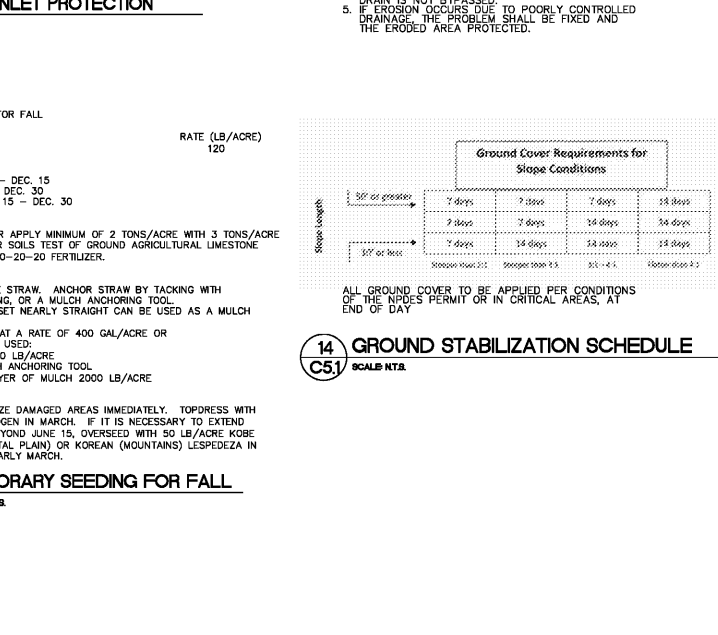
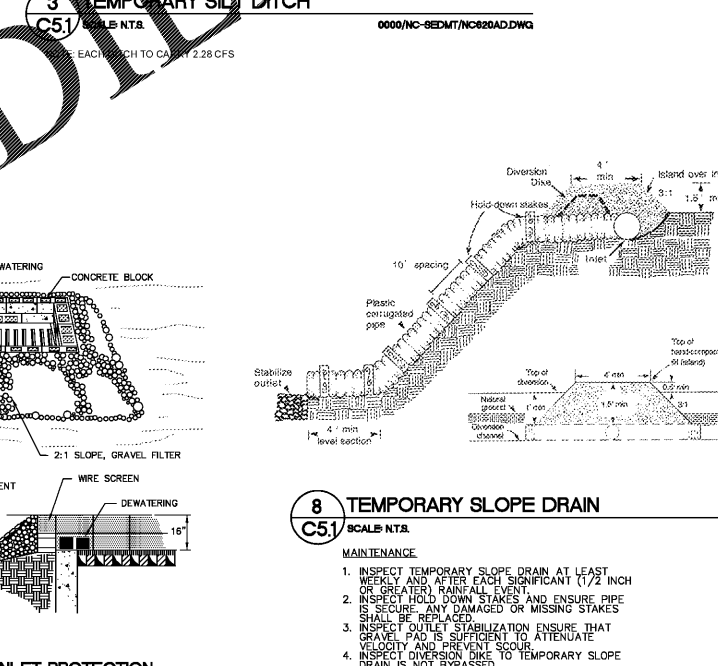
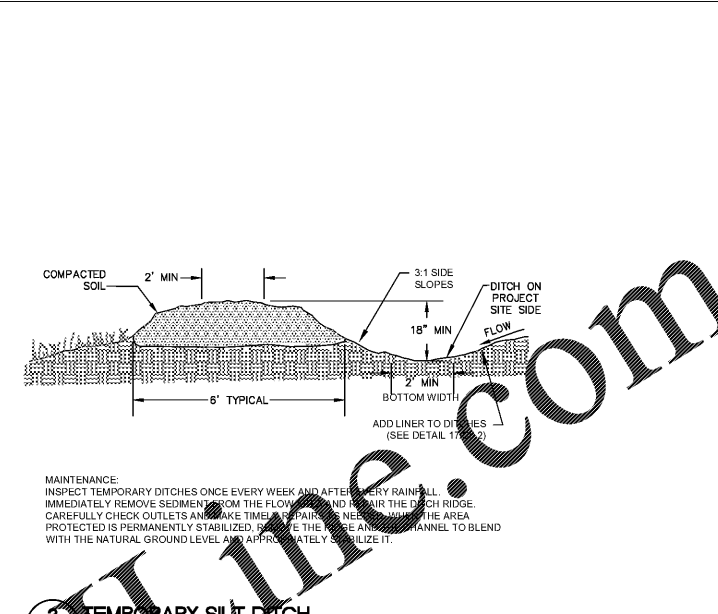
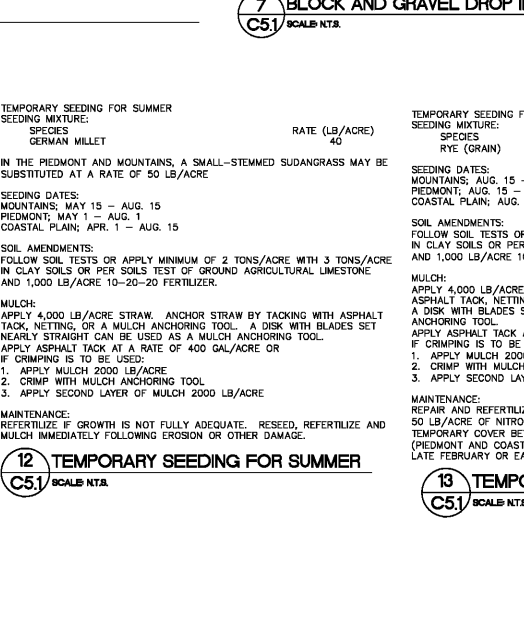
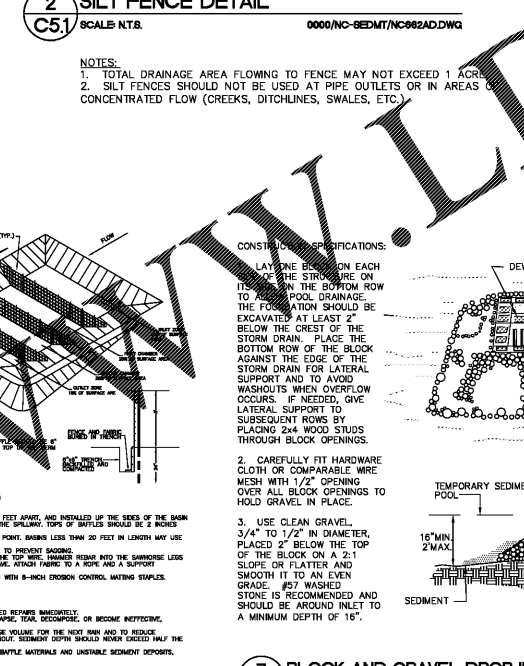
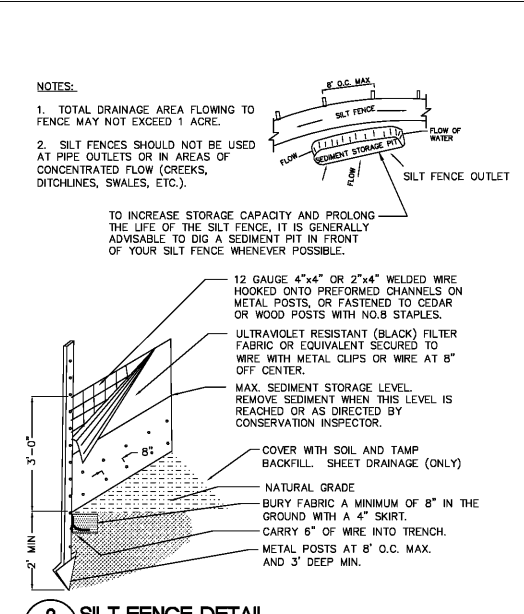
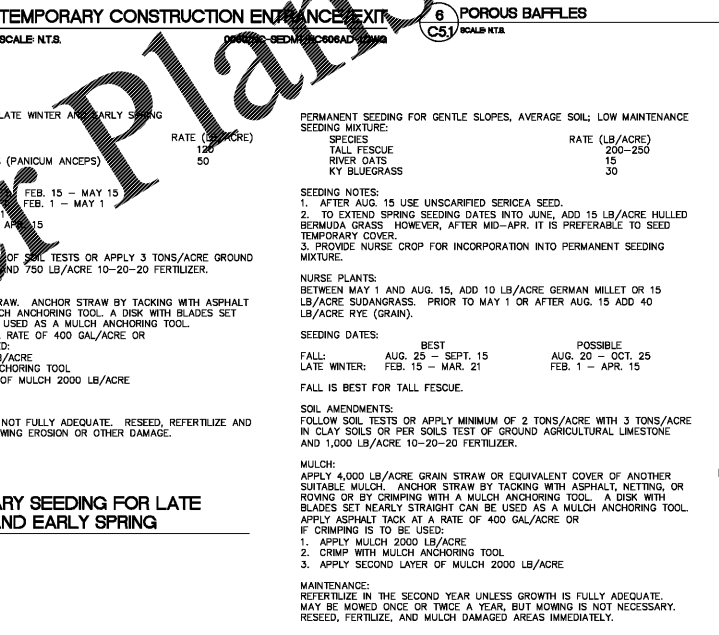
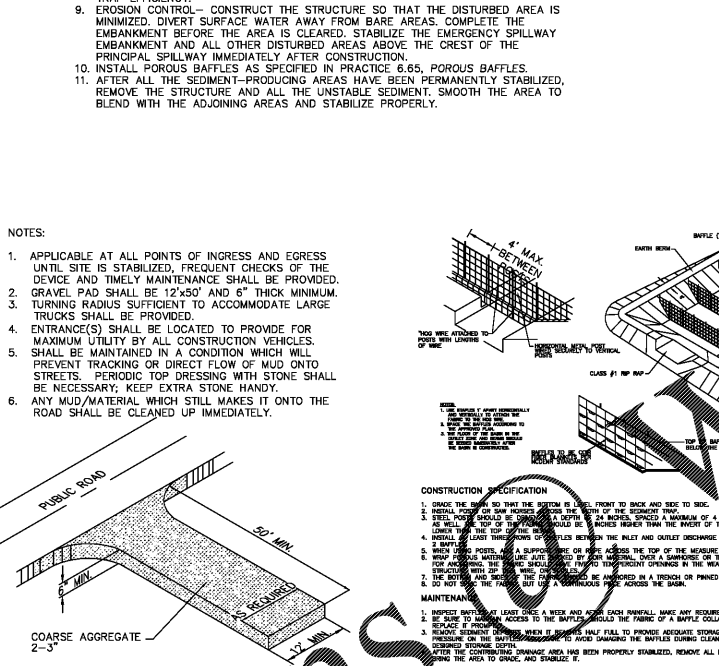
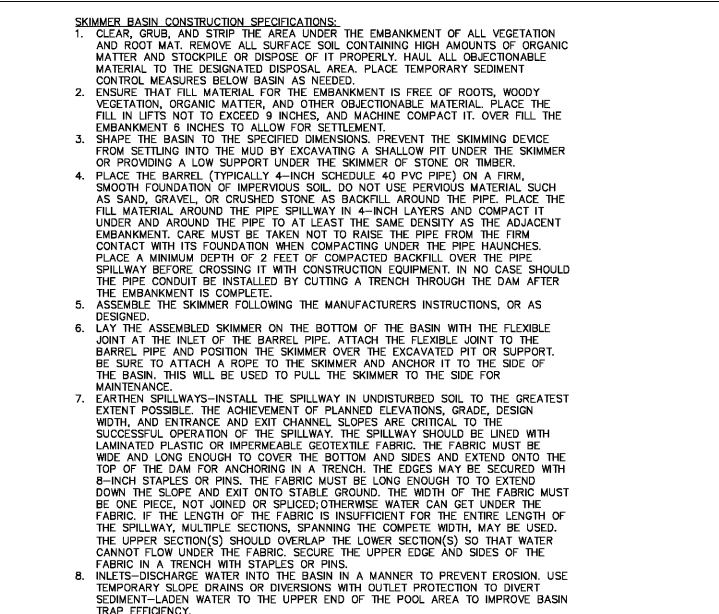
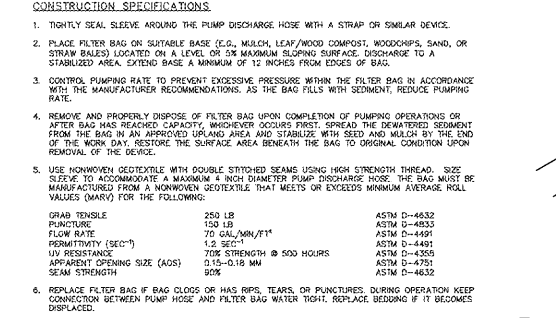
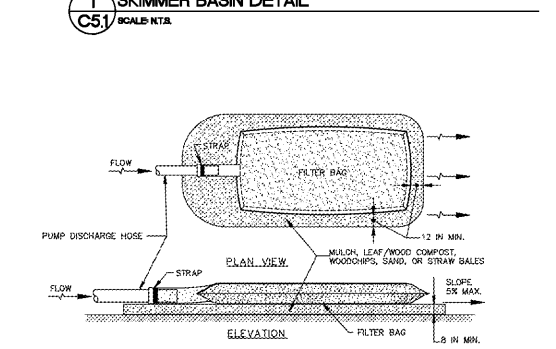
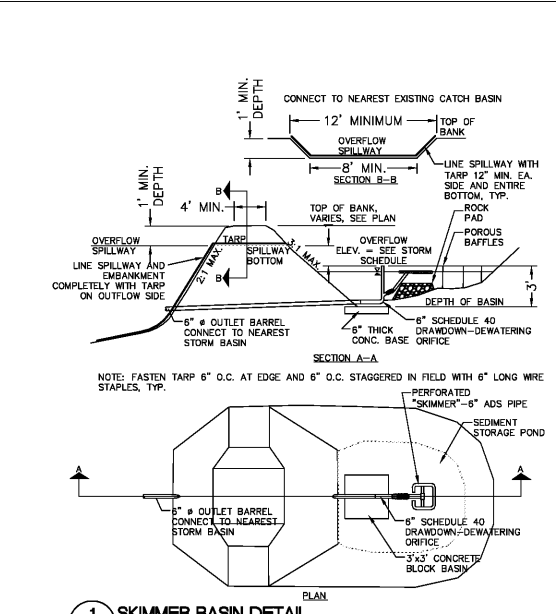
no. revisions

drawn checked

C5.1
sheet
SEDIMENT AND
EROSION CONTROL
DETAILS

project no. 1716

date 04/25/19



SEEDBED PREPARATION

- CHISEL COMPACTED AREAS AND SPREAD TOPSOIL 3 INCHES DEEP OVER ADVERSE SOIL CONDITIONS, IF AVAILABLE.
- RIP THE ENTIRE AREA TO 6 INCHES DEPTH.
- REMOVE ALL LOOSE ROCK, ROOTS, AND OTHER OBSTRUCTIONS LEAVING SURFACE REASONABLY SMOOTH AND UNIFORM.
- APPLY AGRICULTURAL LIME, FERTILIZER, AND SUPERPHOSPHATE UNIFORMLY AND MIX WITH SOIL (SEE BELOW).
- CONTINUE TILLAGE UNTIL A WELL-PULVERIZED, FIRM REASONABLY UNIFORM SEEDBED IS PREPARED 4 TO 6 INCHES DEEP.
- SEED ON A FRESHLY PREPARED SEEDBED AND COVER SEED LIGHTLY WITH SEEDING EQUIPMENT OR CULTIPACK AFTER SEEDING.
- MULCH IMMEDIATELY AFTER SEEDING AND ANCHOR MULCH.
- INSPECT ALL SEEDBED AREAS AND MAKE NECESSARY REPAIRS OR RESEEDING WITHIN THE PLANTING SEASON, IF POSSIBLE. A DISK WITH BLADES SET NEARLY STRAIGHT CAN BE USED AS A MULCH ANCHORING TOOL.
- CONSULT CONSERVATION INSPECTOR ON MAINTENANCE TREATMENT AND FERTILIZATION AFTER PERMANENT COVER IS ESTABLISHED.

SEE SEASONAL APPLICATION SCHEDULE.

SEEDING MIXTURES

TEMPORARY SEEDING FOR LATE WINTER AND EARLY SPRING SEEDING MIXTURE:	RATE (LB/ACRE)	PERMANENT SEEDING FOR GENTLE SLOPES, AVERAGE SOIL; LOW MAINTENANCE SEEDING MIXTURE:	RATE (LB/ACRE)
SPECIES		SPECIES	
RYE (GRASS)	150	FALL FESCUE	200-250
BEAKED PANIC GRASS (PANICUM ANCEPS)	120	RYE GRASS	15
		KY BLUEGRASS	30

SEEDING NOTES:

- AFTER AUG. 15 USE UNSCARIFIED SERICEA SEED.
- TO EXTEND SPRING SEEDING DATES INTO JUNE, ADD 15 LB/ACRE HULLED BERMUDA GRASS. HOWEVER, AFTER MID-APR. IT IS PREFERABLE TO SEED TEMPORARY COVER.
- PROVIDE NURSE CROP FOR INCORPORATION INTO PERMANENT SEEDING MIXTURE.

NURSE PLANTS:

BETWEEN MAY 1 AND AUG. 15, ADD 10 LB/ACRE GERMAN MILLET OR 15 LB/ACRE SUDANGRASS. PRIOR TO MAY 1 OR AFTER AUG. 15 ADD 40 LB/ACRE RYE (GRASS).

SEEDING DATES:

BEST	POSSIBLE
FALL: AUG. 25 - SEPT. 15	AUG. 20 - OCT. 25
LATE WINTER: FEB. 15 - MAR. 21	FEB. 1 - APR. 15

FALL IS BEST FOR FALL FESCUE.

SOIL AMENDMENTS:

FOLLOW SOIL TESTS OR APPLY MINIMUM OF 2 TONS/ACRE WITH 3 TONS/ACRE IN CLAY SOILS OR PER SOILS TEST OF GROUND AGRICULTURAL LIMESTONE AND 1,000 LB/ACRE 10-20-20 FERTILIZER.

MULCH:

APPLY 4,000 LB/ACRE STRAW, ANCHOR STRAW BY TACKING WITH ASPHALT TACK, NETTING, OR A MULCH ANCHORING TOOL. A DISK WITH BLADES SET NEARLY STRAIGHT CAN BE USED AS A MULCH ANCHORING TOOL IF CRIMPING IS TO BE USED.
- APPLY MULCH 2000 LB/ACRE
- CRIMP WITH MULCH ANCHORING TOOL
- APPLY SECOND LAYER OF MULCH 2000 LB/ACRE

MAINTENANCE:

REPAIR AND REFERILIZE DAMAGED AREAS IMMEDIATELY. TOPDRESS WITH 50 LB/ACRE OF NITROGEN IN MARCH. IF IT IS NECESSARY TO EXTEND TEMPORARY COVER BEYOND JUNE 15, OVERSEED WITH 50 LB/ACRE HOBE (PIEDMONT AND COASTAL PLAIN) OR KOREAN (MOUNTAINS) LESPEDEZA IN LATE FEBRUARY OR EARLY MARCH.

GROUND COVER REQUIREMENTS FOR Slope Conditions

Slope	100000-500000:1	500000-2000000:1	30:1-4:1	1000000-5000000:1
50% or greater	7 drops	7 drops	7 drops	18 drops
33% or less	7 drops	7 drops	18 drops	18 drops
	7 drops	18 drops	18 drops	18 drops

ALL GROUND COVER TO BE APPLIED PER CONDITIONS OF THE PERMITS PERMIT OR IN CRITICAL AREAS, AT END OF DAY.

14 GROUND STABILIZATION SCHEDULE
SCALE N.T.S.

15 TEMPORARY SEEDING FOR FALL
SCALE N.T.S.

