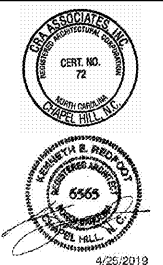
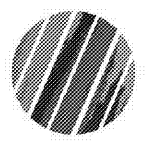


222 cloister court
chapel hill, nc 27514
919.401.8586
www.cra-ae.com



4/25/2019

Cedar Ridge High School
Classroom Addition
Orange County Schools
1125 New Grady Brown School Road
Hillsborough, North Carolina



no. revisions

The use of these plans and specifications shall be restricted to the original site for which they were prepared and maintained. They are not to be used for any other project, modification, or addition by any other person without the prior written consent of the architect. If the use of these plans and specifications is required by the contract, the contractor shall be responsible for obtaining the necessary permits and approvals from the appropriate authorities. The contractor shall be responsible for obtaining the necessary permits and approvals from the appropriate authorities. The contractor shall be responsible for obtaining the necessary permits and approvals from the appropriate authorities.

drawn checked
date

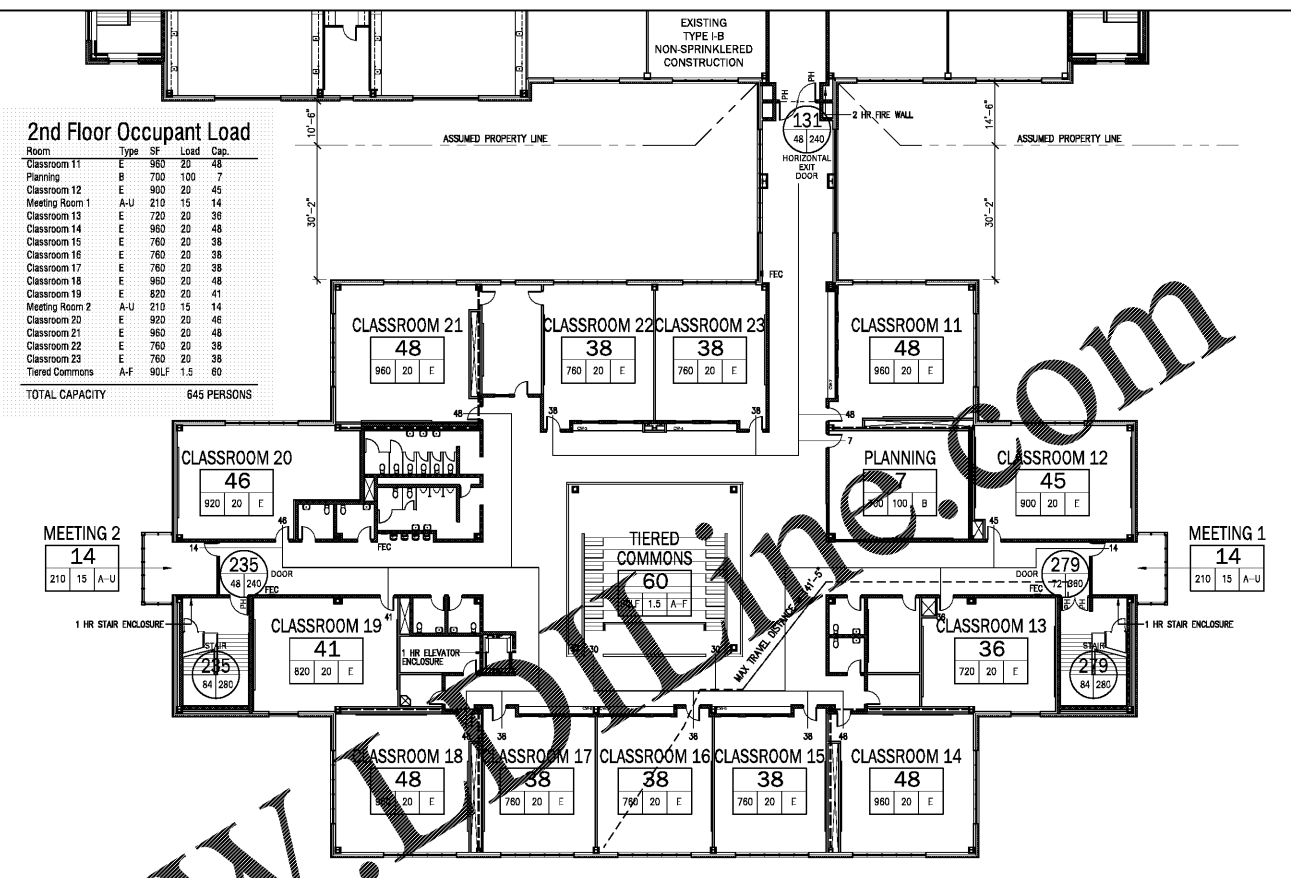
Life Safety Plans

sheet

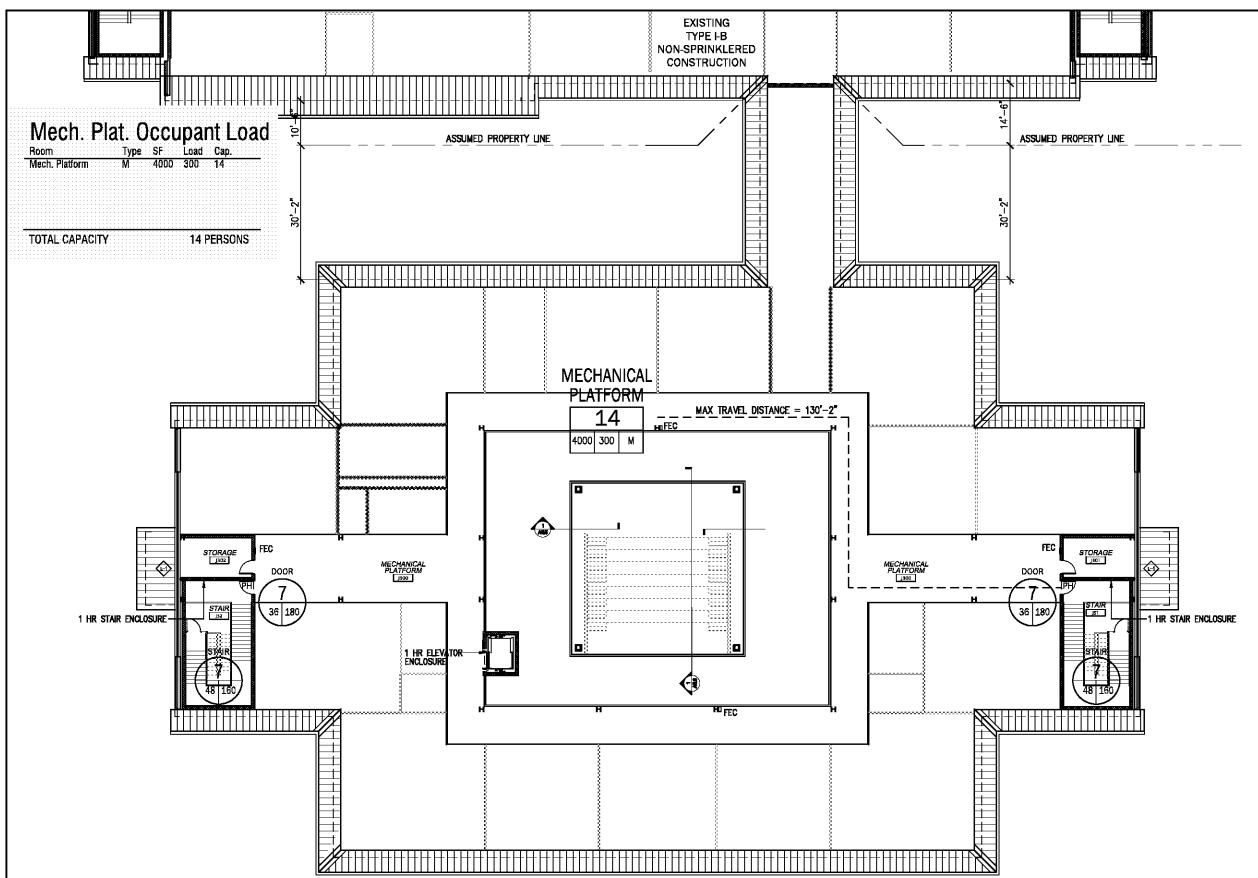
A0.2

project no. 1716

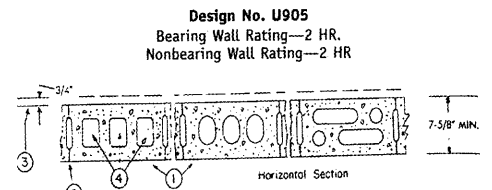
date 4/25/19



2 Second Floor Life Safety Plan
Scale: 1/16" = 1'-0"



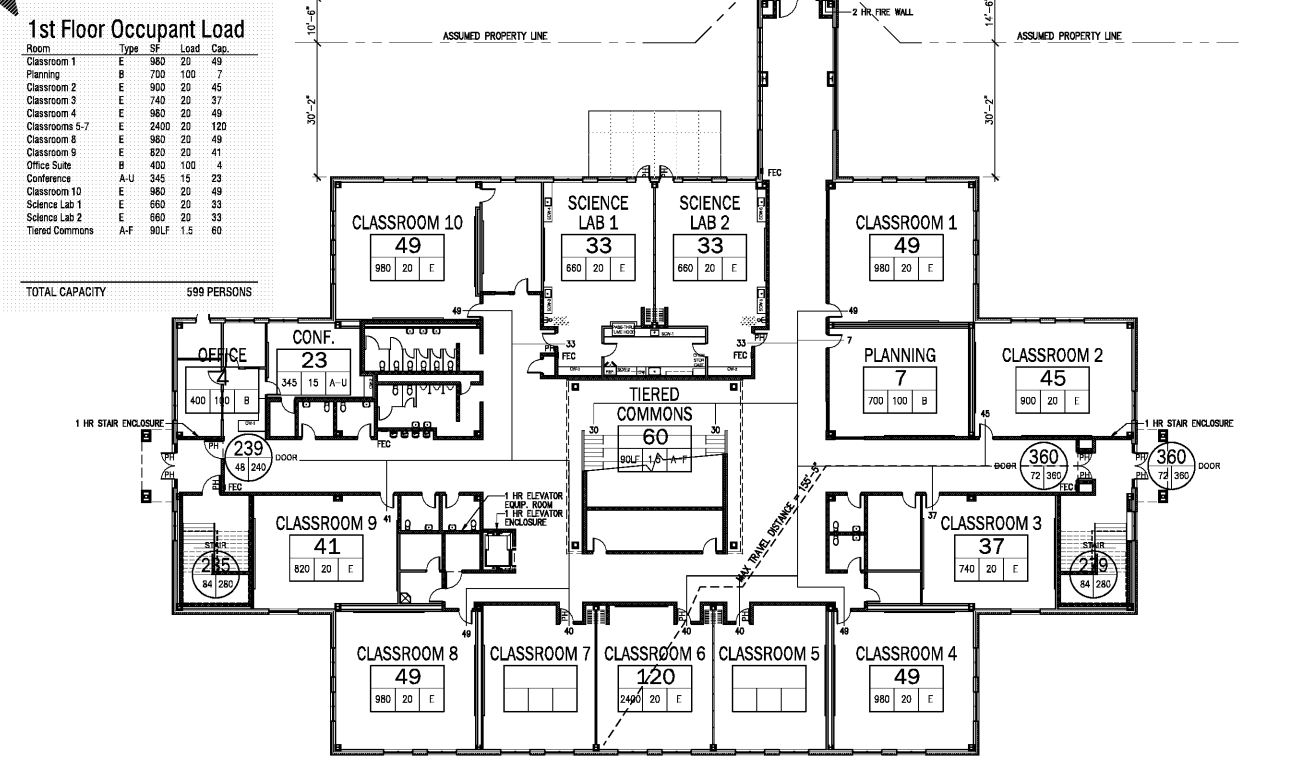
3 Mechanical Platform Life Safety Plan
Scale: 1/16" = 1'-0"



- Concrete Blocks*—Various designs. Classification D-2 (2 hr). See Concrete Blocks category for list of eligible manufacturers.
 - Mortar—Blocks laid in full bed of mortar, nom. 3/8 in. thick, of not less than 2-1/4 and not more than 3-1/2 parts of clean sharp sand to 1 part Portland cement (proportioned by volume) and not more than 5 percent hydrated lime (by cement volume). Vertical joints staggered.
 - Portland Cement Stucco or Gypsum Plaster—Applied to classification if used. Where combustible members are used in wall, plaster or stucco must be applied on the face opposite framing to achieve a fire classification of 1-1/2 hr. Attached to concrete block. (Item 1).
 - Loose Masonry Fill—If all cavity spaces are filled with loose dry expanded slag, expanded clay, or shale (Rotary Kiln Process), water repellent vermiculite masonry insulation, or silicone treated perlite loose fill insulation achieve 1 hr to classification.
 - Foamed Plastic (Optical Notation)—2 in. thick max, 4 ft wide sheathing attached to concrete block (Item 1). Celotex Concrete Type Thermax.
- *Bearing the UL Classification Marking

4 U. L. Design No. U905
Scale: NTS

ROOM OCCUPANCY INFORMATION	
STORAGE	ROOM NAME
2	CLASSIFIED OCCUPANCY
560	OCCUPANCY CLASSIFICATION
300	S.F. PER OCCUPANT
S	ACTUAL SQUARE
OCCUPANCY CLASSIFICATION KEY	
A	ASSEMBLY - CONCENTRATED
B	ASSEMBLY - FIXED SEATING
C	ASSEMBLY - UNCONCENTRATED
D	BUSINESS
E	EDUCATION, CLASSROOM AREA
F	EDUCATION, SHOPS & OTHER
G	INDUSTRIAL
H	LOCKER AREA
I	READING ROOM
J	STAIR AREA
K	DRYEN
L	STORAGE
M	MECHANICAL
EGRESS COMPONENT INFORMATION	
DOOR	TYPE OF COMPONENT
160	ACTUAL OCCUPANT LOAD
68	MAX OCCUPANT LOAD
340	CLEAR WIDTH (INCHES)
PH	PANIC HARDWARE
REG.	REG. EGRESS WIDTH PER OCCUPANT SERVED
STAIRWAYS: 0.30"	OTHER: 0.20"
(REFER TO IBC/ICC 1006.1)	
RATED CONSTRUCTION LEGEND	
---	1 HR FIRE WALL
---	2 HR FIRE WALL



1 First Floor Life Safety Plan
Scale: 1/16" = 1'-0"

Order Now