

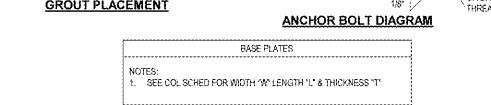
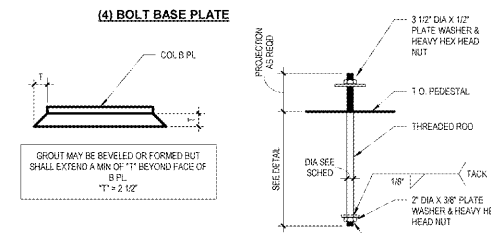
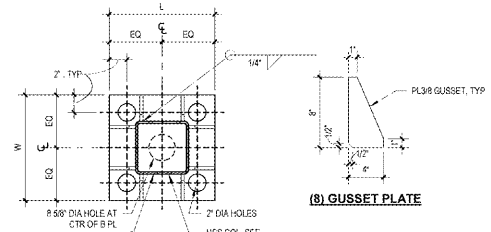
**FOUNDATION GENERAL NOTES:**  
 1. FOOTINGS HEREIN ARE RELATIVE TO ELEVATION OF P=0'. THE TOP OF ALL FOOTINGS SHALL BE THIS. 4'-6" TYP UON  
 2. ENCASE ALL BASE PLATES WITH 3000 PSI CONC OR GROUT. MIN 2" THICK ALL AROUND & ON TOP OF 1/2" CUR TO TOP OF BOLTS.

STRUCTURAL - FOUNDATION SCHEDULE					
MARK	LENGTH	WIDTH	THICKNESS	TOP REINF	BOTTOM REINF
F28X10	23'-0"	10'-0"	2'-0"	#6 @ 12" OC EW	#6 @ 12" OC EW

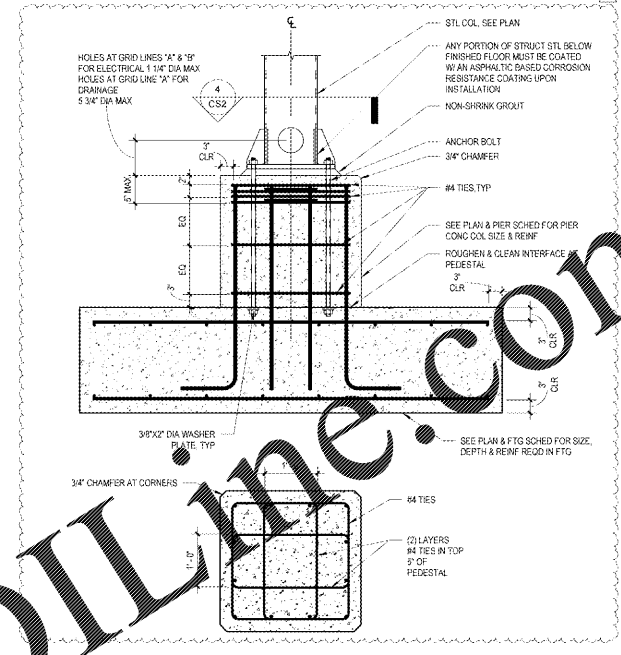
STRUCTURAL - CONCRETE PIER SCHEDULE					
MARK	SIZE	VERT REINF	HES	NOTES	
P1	32" x 32"	(12) #6	#4 TIES	SEE DETAIL / SCHED FOR B PL INFO	

STRUCTURAL - STEEL COLUMN SCHEDULE				
MARK	TYPE	COLUMN BASE PLATE	NOTES	
COL "A"	HSS12X6X1/4	A	SEE DETAIL / SCHED FOR B PL INFO	

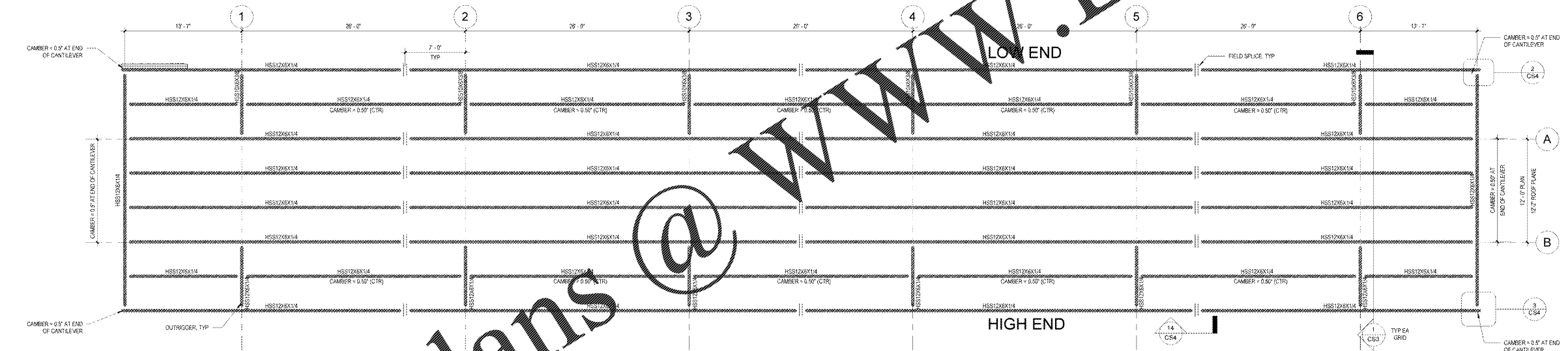
STRUCTURAL - COLUMN BASE PLATE SCHEDULE					
MARK	LENGTH	WIDTH	THICKNESS	MATERIAL	ANCHOR BOLTS
A	1'-8"	1'-8"	1.38"	A572 GR. 50 (4) 1 1/2" THREADED HEADED RODS (ASTM F1554 GR. 36 (3))	



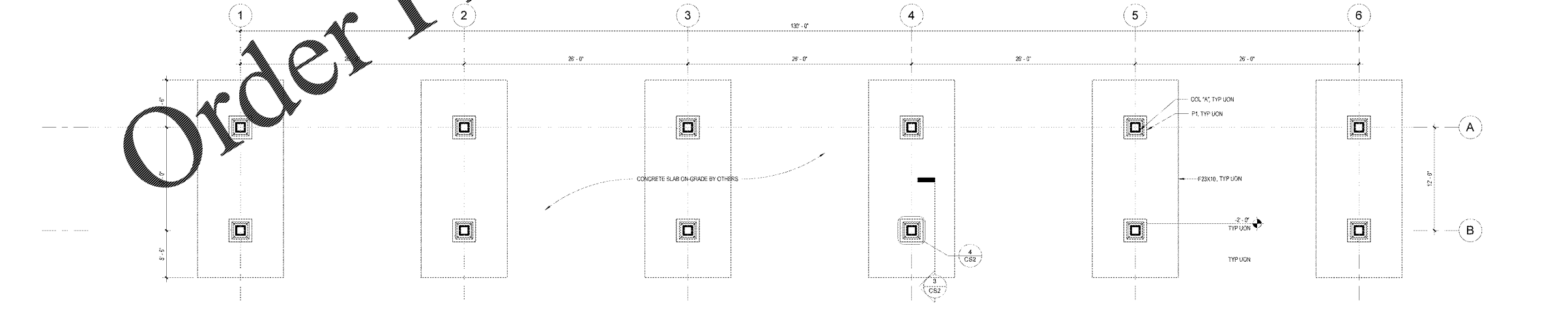
**GEN. BASE PLATE AND ANCHOR BOLT INFO.**  
 CS2 1'-0\"/>



**FOUNDATION DETAIL**  
 CS2 3/4\"/>



**FRAMING PLAN**  
 CS2 3/16\"/>



**FOUNDATION PLAN**  
 CS2 3/16\"/>

**Cuhaci & Peterson**  
 Architects Engineers Planners  
 1925 Prospect Avenue, Orlando, FL 32814  
 407-437-4411 Fax 407-437-4411 [www.cuhaci.com](http://www.cuhaci.com)

**CLIENT NAME:** WAWA  
**PROJECT NAME:** WAWA STRAIGHT 6 GAS CANOPY 2019.01 STORE #5357-DOR  
 280 WEST BALTIMORE PIKE  
 WAWA, PENNSYLVANIA 19083

**PROJECT NO.:** 2171008  
**DATE:** 09/03/2018  
**NO. OF SHEETS:** 10  
**DATE:** 09/03/2018  
**NO. OF SHEETS:** 10

**REVISION SCHEDULE**

No.	Description	Date
1	PRELIMINARY	08/17/2018
2	PRELIMINARY REVIEW	09/05/2018
3	REVISED	09/05/2018
4	REVISED	09/05/2018

**FOUNDATION PLAN AND NOTES**

**CS2**