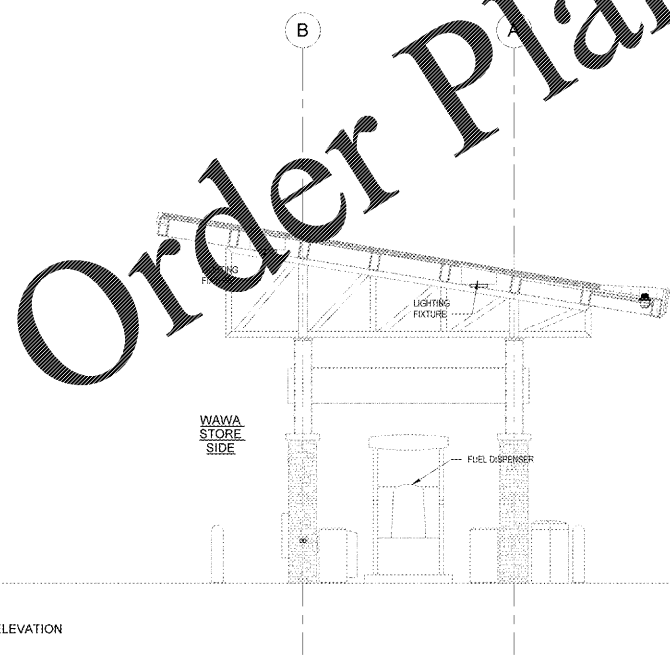
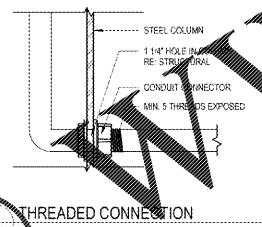


1 CANOPY ELECTRICAL REFLECTED  
CEILING PLAN  
3/16" = 1'-0"

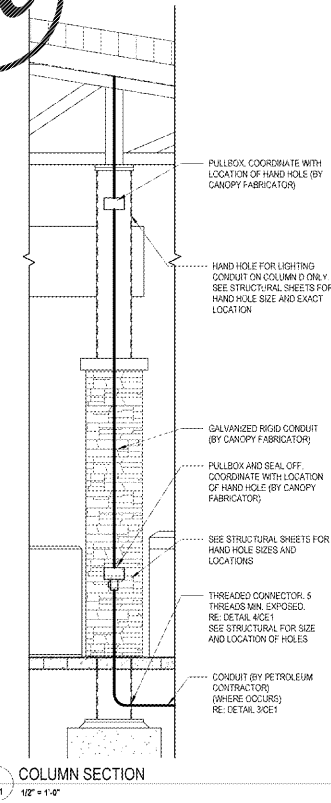
Lighting Fixture Schedule				
TYPE	MANUF.	CATALOG NO.	QUANT.	WATTS / LAMP
ALL LIGHT FIXTURES AND LAMPS SUPPLIED BY WAWA, INSTALLED BY G.C.			24	114 W
COORDINATE FIXTURE COUNT, LOCATIONS AND LAMP OUTPUT WITH SITE LIGHTING ENGINEERING DRAWINGS				



2 CANOPY SIDE ELEVATION  
1/4" = 1'-0"



4 THREADED CONNECTION  
1/2" = 1'-0"



5 COLUMN SECTION  
1/2" = 1'-0"

- GENERAL NOTES**
- ALL ELECTRICAL AND COMPONENTS SHALL BE GROUNDED BY A SEPARATE #10 GROUND WIRE.
  - PETROLEUM CONTRACTOR TO PULL WIRING FOR INTERCOM (SUPPLIED BY OTHERS).
  - THE CONDUIT FOR THE "RD" FIXTURES TO RUN ALONG THE GUTTER PAN AND RUN TO THE FIXTURES IN THE FLUTES OF THE DECKING. NO CONDUIT SHOULD BE VISIBLE FROM BELOW THE CANOPY.
  - FOR DISPENSER DATA, VEEGER-ROD SENSOR, AND INTERCOMM. PROVIDE CONDUITORS AND CONNECTIONS AS REQUIRED. COORDINATE WITH WAWA CONSTRUCTION MANAGER.
  - NOT USED.
  - ELECTRICAL CONTRACTOR TO COORDINATE WITH PETROLEUM CONTRACTOR AND GENERAL CONTRACTOR TO MAKE SURE THAT SEAL OFF FITTINGS AS REQUIRED ARE PROVIDED FOR CONDUITS ENTERING THE FUEL DISPENSERS AND THAT THE ELECTRICAL INSTALLATION AT THE GAS CANOPY AND FUEL TANKS IS IN ACCORDANCE WITH NEC ARTICLE 514.
  - FOR BRANCH CIRCUITS OUT TO CANOPY AREA, IF CIRCUIT LENGTH EXCEEDS 100 FEET, WIRE CONDUIT MUST BE SIZED PER NEC 310.15(A)(1) AND 312 (FLORIDA ONLY).
  - LIGHT FIXTURES PROVIDED BY WAWA AND INSTALLED BY CANOPY VENDOR. E.G. RESPONSIBLE FOR CONDUIT, WIRING AND FINAL CONNECTION.

**TANKS AND CANOPY CONDUITS AND CONDUCTORS NOTE:**

THE GENERAL CONTRACTOR SHALL FURNISH AND INSTALL ALL GRC CONDUIT, ASSOCIATED FITTINGS AND WIRE NECESSARY TO PROVIDE A COMPLETE ELECTRICAL SYSTEM FOR THE GAS CANOPY, FUEL TANKS, MUSIC AND INTERCOM SYSTEM. HOWEVER, THE FOLLOWING CONDUIT SHALL BE PROVIDED AND INSTALLED BY THE CONTRACTOR INDICATED BELOW.

**FUEL TANKS**  
PETROLEUM CONTRACTOR SHALL FURNISH AND INSTALL THE CONDUIT FROM THE EDGE OF THE FUEL TANK CONCRETE PAD AND TERMINATE AT THE TANK EQUIPMENT.

**GAS CANOPY**  
PETROLEUM CONTRACTOR SHALL FURNISH AND INSTALL THE CONDUIT FROM THE EDGE OF THE CONCRETE CANOPY PAD TO THE BASE OF THE CANOPY COLUMNS WHERE THEY WILL MAKE A THREADED CONNECTION. REFER TO DETAIL ACE1 CANOPY FABRICATOR. SHALL FURNISH AND INSTALL THE THREADED CONNECTOR (MIN 5 ENFORCED THREADS) AT THE BASE OF THE CANOPY COLUMN AND CONTINUE UP THROUGH THE COLUMN TO A SEAL OFF AND LOCK AT 2'-4" THEN CONTINUE WITH RIGID CONDUIT TO THE BOTTOM OF THE CANOPY WHERE IT WILL TRANSITION INTO SEAL-TIGHT CONDUIT AND TERMINATE AT THE FIRST ROW OF LIGHTS. GC SHALL CONNECT INTO THE FIRST ROW OF LIGHTS AND COMPLETE THE ELECTRICAL CANOPY LIGHTING.

PETROLEUM CONTRACTOR SHALL ALSO INSTALL THE CONDUIT FROM THE EDGE OF THE CONCRETE CANOPY PAD TO THE TERMINATION POINT FOR THE MUSIC AND INTERCOM SYSTEMS.

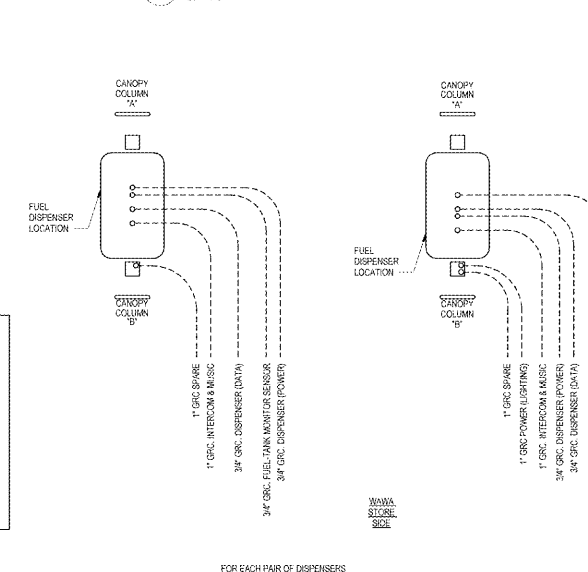
**GASOLINE CANOPY CONDUIT REQUIREMENTS:**

- (1) 3/4" GRC TO EACH DISPENSER FOR INTERCOMM/MUSIC.
- (1) 1" GRC TO EVERY OTHER CANOPY COLUMN B FOR SPARE.
- (2) 3/4" GRC TO EACH DISPENSER: (1 POWER, 1 DATA)
- (1) 3/4" GRC TO EACH DISPENSER (FUEL-TANK MONITOR SENSOR)

**GASOLINE CONDUIT REQUIREMENTS:**

- (1) 1" GRC SPARE TO COLUMN A OR C AS DICTATED BY FUEL COURT LAYOUT. (SEE SHEET CE1)
- (1) 1" GRC TO CANOPY COLUMN FOR LIGHTING (COLUMN FURTHEST FROM STORE) - COLUMN B. (SEE SHEET CE1 FOR COUNT)
- (4) 3/4" GRC TO EACH DISPENSER: (1 POWER, 1 DATA, 1 MUSIC/INTERCOM, 1 FUEL-TANK MONITOR SENSOR)
- (2) 1" GRC TO EACH TANK STP CONTAINMENT SUMP: (1 PETRO POWER (1 POWER, 1 SPARE))
- (1) 3/4" GRC TO EACH TANK STP COMPARTMENT SUMP: (FUEL-TANK MONITOR MAGNETOSTRUCTIVE PROBE AND FUEL-TANK MONITOR SENSOR)
- (1) 3/4" GRC TO EACH TANK MULTI-PORT CONTAINMENT SUMP: (FUEL-TANK MONITOR MULTI-PORT FULL SUMP)
- (1) 3/4" GRC TO EACH TANK: (FUEL-TANK MONITOR BRINE INTERSTITIAL RESERVOIR)
- (1) 1" GRC TO OVERFILL ALARM (ON VENT STACK)
- (1) 1" GRC TO VENT STACK (SPARE)
- (1) 1" GRC TO E-STOP AT STREET SIDE OF GAS CANOPY (SEE NOTE 15 ON SHEET E4)

**Gas Canopy Conduit Notes**



3 CANOPY CONDUIT LOCATIONS  
1/12" = 1'-0"

No.	Description	Date
1	PRELIMINARY	08/17/2019
2	REVISED	09/05/2019
3	REVISED	09/05/2019
4	REVISED	09/05/2019