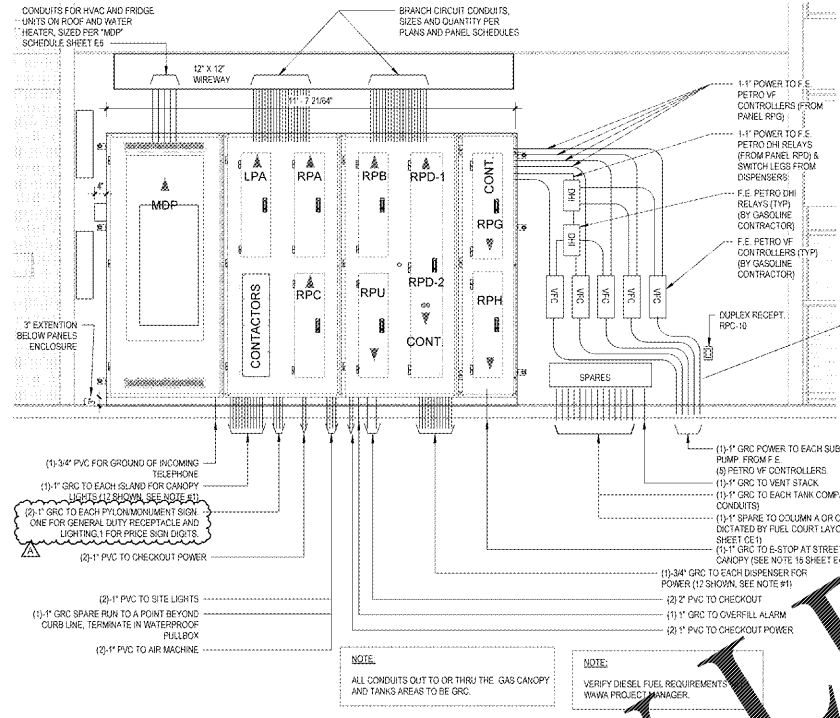
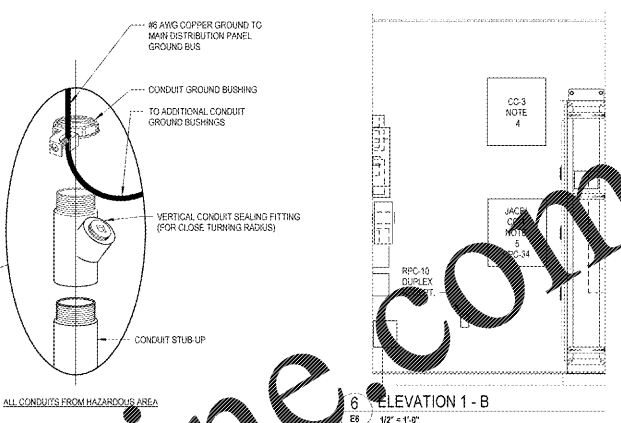


1 ELECTRICAL ROOM - PLAN
E6 1/2" = 1'-0"

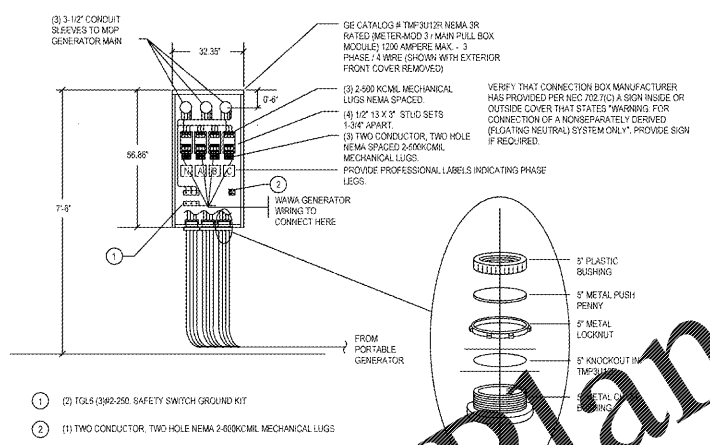


4 ELEVATION 1 - C
E6 1/2" = 1'-0"

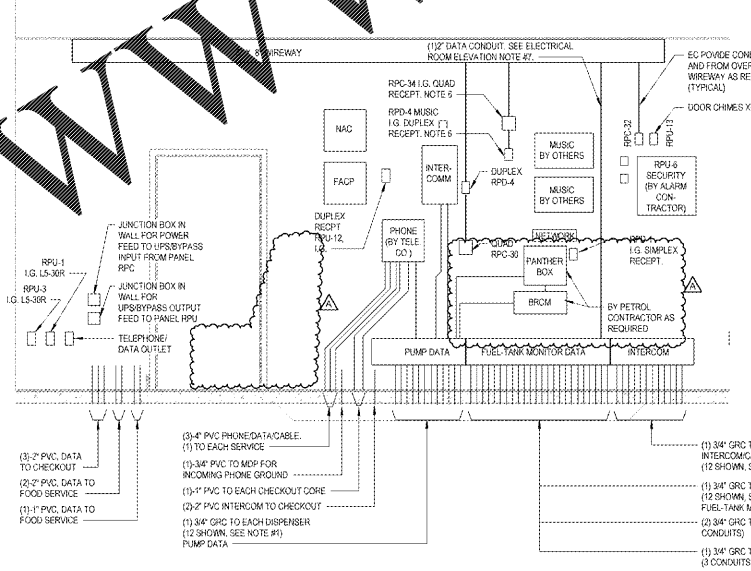


ELECTRICAL ROOM ELEVATION NOTES:

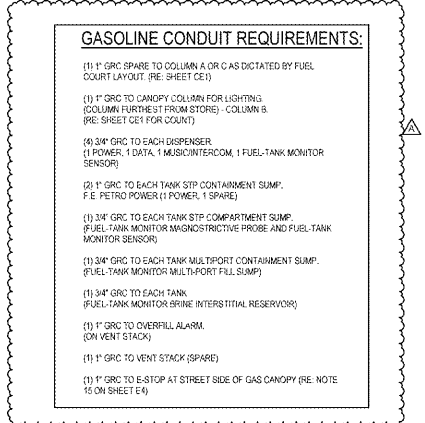
- CONDUIT LAYOUT PLAN SHOWN ON PLAN HAS PROVISIONS FOR 12 DISPENSERS. THE ACTUAL NUMBER OF CONDUITS REQUIRED WILL BE DEPENDENT ON THE CANOPY CONFIGURATION, AND ACTUAL NUMBER OF DISPENSERS INSTALLED. IF FEWER DISPENSERS ARE INSTALLED, AND THEREFORE SUFFICIENT SPACE EXISTS, THE CONDUITS ARE TO BE INSTALLED IN A SINGLE ROW.
- PROVIDE 2" UNDERGROUND CONDUIT FROM SPARES WIREWAY TO INTERROOM WIREWAY FOR COMMUNICATIONS DATA WIRING. SEE SHEET E4.
- ALL SPARE CONDUITS WHICH TRANSFER THE HAZARDOUS AREA SHOULD BE PACKED WITH MINERAL FIBER FOLLOWED WITH DUCT SEAL, AND THEN SEALED WITH A THREADED PLUG OR CAP AS APPROPRIATE FOR THE SPECIFIC CONFIGURATION AT EACH END OF THE CONDUIT.
- PANEL CC-3 AND REQUIRED CONDUIT SHALL BE PROVIDED BY BAS CONTRACTOR CONNECTED TO PANEL RPC-22-24-26.
- PANEL JUNCTION BOX AND REQUIRED CONDUIT SHALL BE PROVIDED BY BAS CONTRACTOR.
- JUNCTION BOX, RECEPTACLES, AND ASSOCIATED CONDUIT TO MAIN DISTRIBUTION PANEL SHALL BE PROVIDED BY ELECTRICAL CONTRACTOR. JUNCTION BOX SHALL BE SURFACE MOUNTED.
- RUN 1/2" CONDUIT TO MANAGERS OFFICE. RUN CONDUIT DOWN AND IN THE MANAGERS OFFICE WALL AND STUB-OUT AT FUEL-TANK MONITOR EQUIPMENT LOCATION. ALSO, RUN 1" CONDUIT FROM MANAGERS OFFICE FUEL-TANK MONITOR ABOVE CEILING TO PANEL RPD IN ELECTRICAL ROOM.
- ALL CONDUITS RUNNING OUT TO CLASSIFIED AREAS SUCH AS THE GAS CANOPY AND TANKS AREA SHALL BE GRC TYPE CONDUIT FOR ENTIRE RUN OF CONDUIT. CONDUITS TO OTHER AREAS SUCH AS MOUNTING SODAS, AIR PUMP, SITE LIGHTING, ETC. MAY BE PVC.



2 300KW CONNECTION BOX DETAIL
E6 1/2" = 1'-0"



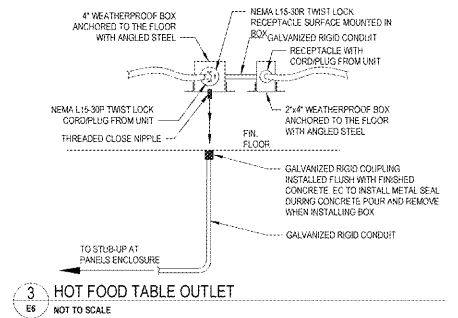
5 ELEVATION 1 - A
E6 1/2" = 1'-0"



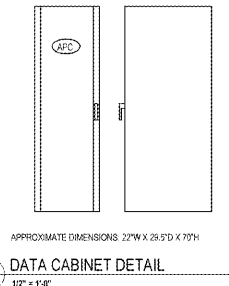
GASOLINE CONDUIT REQUIREMENTS:

- 1" GRC SPARE TO COLUMN A OR C AS DICTATED BY FUEL COURT LAYOUT. (SEE SHEET E3)
- 1" GRC TO CANOPY COLUMN FOR LIGHTING (COLUMN FURTHEST FROM STORE); COLUMN B (SEE SHEET E3 FOR COUNT)
- 3/4" GRC TO EACH DISPENSER
- 1" GRC TO EACH TANK STP COMPARTMENT SUMP; F.E. PETRO POWER (1 POWER, 1 SPARE)
- 3/4" GRC TO EACH TANK STP COMPARTMENT SUMP (FUEL-TANK MONITOR MULTIPORT FULL SUMP)
- 3/4" GRC TO EACH TANK MULTIPORT CONTAINMENT SUMP; (FUEL-TANK MONITOR MULTIPORT FULL SUMP)
- 3/4" GRC TO EACH TANK (FUEL-TANK MONITOR BRINE INTERSTITIAL RESERVOIR)
- 1" GRC TO OVERFILL ALARM (ON VENT STACK)
- 1" GRC TO VENT STACK (SPARE)
- 1" GRC TO E-STOP AT STREET SIDE OF GAS CANOPY (SEE NOTE 15 ON SHEET E4)

BUILDING AUTOMATION SYSTEM (BAS)
GENERAL CONTRACTOR TO INSTALL WATER METERS FOR B.A.S. PER PLUMBING DRAWINGS P4, AND PROVIDE UNDERGROUND CONDUIT TO EQUIPMENT AC3.3 SHOWN ON DRAWING E21. B.A.S. REFRIGERATOR COMPANY INSTALLERS SHALL SUPPLY AND INSTALL B.A.S. AND CENTRAL WIRING PER CURRENT EDITION OF BUILDING AUTOMATION SYSTEM 2010 (LITE) MASTER SPEC. NEW STORES B.A.S. MASTER SPEC'S BY HVAC CONCEPTS, INC. AND AVAILABLE IN PLAN EXPRESS PROJECT FOLDER.



3 HOT FOOD TABLE OUTLET
E6 NOT TO SCALE



7 DATA CABINET DETAIL
E6 1/2" = 1'-0"

Order Plans @ WWW.LDILine.com

1925 Prospect Ave.
Orlando, FL 32814
P (407) 661-9100
F (407) 661-9101
www.e7.com

Cuhaci & Peterson
Architects Engineers Planners

CLIENT NAME
WAWA
260 WEST BALTIMORE PIKE
WAWA, PENNSYLVANIA 19083

PROJECT NAME
WAWA F85FB 2019.01 STORE #5357-DOR
NW 87TH AVE. & NW 38RD ST.
DORAL, FLORIDA

SHEET TITLE
ELECTRICAL ROOM PLAN AND ELEVATIONS

No.	Revision	Description	Date
1	PRELIMINARY	PRELIMINARY	08/03/2018
2	REVISED	REVISED	08/03/2018
3	REVISED	REVISED	08/03/2018
4	REVISED	REVISED	08/03/2018
5	REVISED	REVISED	08/03/2018
6	REVISED	REVISED	08/03/2018
7	REVISED	REVISED	08/03/2018
8	REVISED	REVISED	08/03/2018
9	REVISED	REVISED	08/03/2018
10	REVISED	REVISED	08/03/2018

PROJECT NO.	271108
DATE	08/03/2018
DRAWN	WAWA
CHECKED	JPM