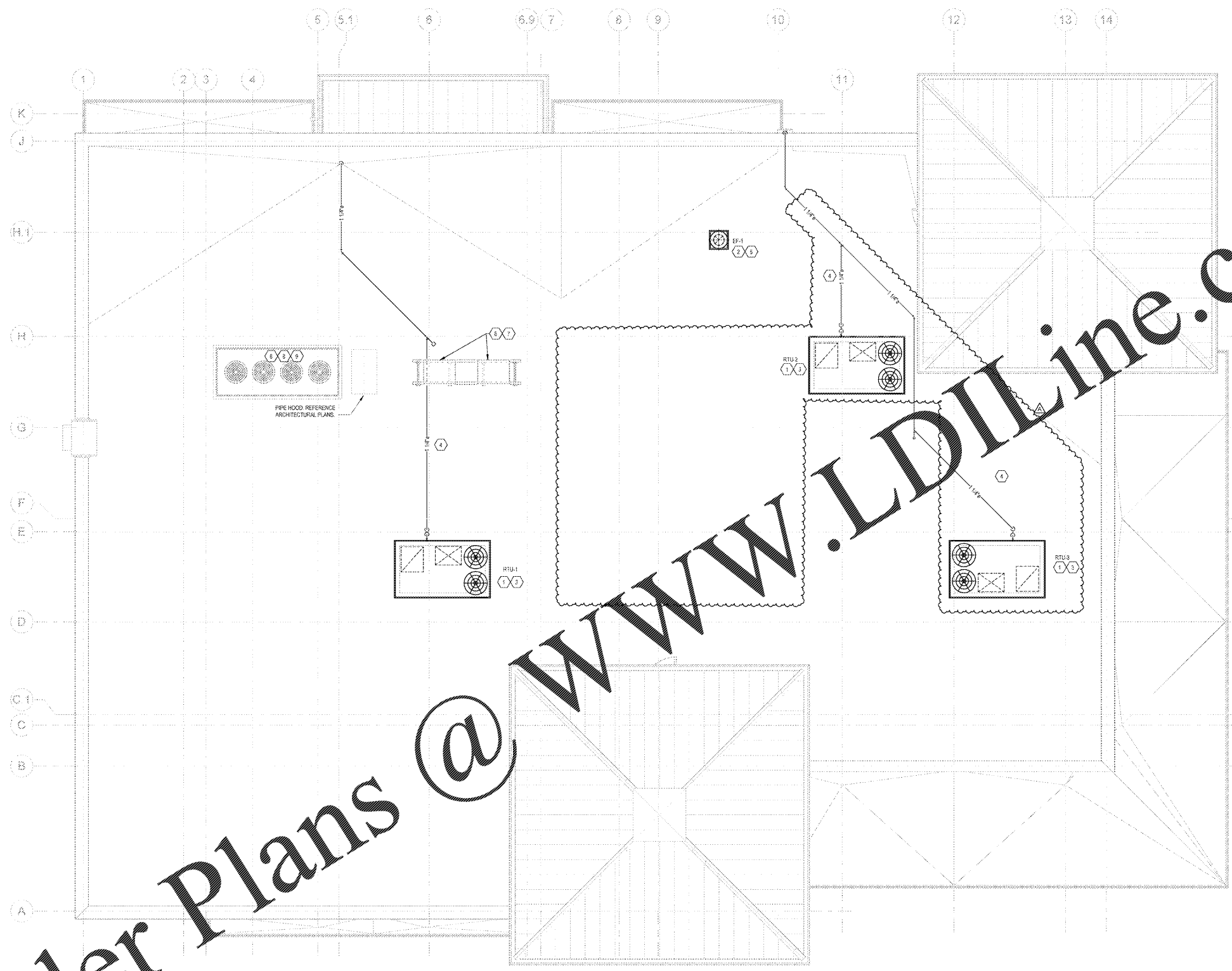


Order Plans @ www.LDinline.com



KEY NOTES:

- 1 FACTORY INSTALLED SMOKE DETECTOR IN MAIN SUPPLY AND RETURN OF EACH ROOFTOP UNIT
- 2 INSTALL ROOF MOUNTED EXHAUST FAN PER DETAIL ON SHEET M3. COORDINATE EXACT LOCATION OF FAN PENETRATION WITH ARCHITECTURAL ROOF PLAN. TRANSITION GALVANIZED DUCTWORK AS NECESSARY FROM FAN INTO CEILING/JOIST SPACE. SEE SHEET M3 FOR CONTINUATION.
- 3 PROVIDE FLEXIBLE CONNECTIONS BETWEEN ALL DUCTWORK AND ROOFTOP UNITS.
- 4 ROUTE SUPPLY AND CONDENSATE DRAIN PIPING ALONG ROOF STRUCTURE PER DETAIL ON SHEET M3.
- 5 MAINTAIN A MINIMAL CLEARANCE BETWEEN OUTSIDE AIR INTAKE AND EXHAUST PENETRATIONS ON ROOF.
- 6 TO SIZE REFRIGERATION EQUIPMENT PROVIDED BY OTHERS.
- 7 FIELD SERVICE REFRIGERATION EQUIPMENT MOUNTED ON ENGINEERED RACK. REFER TO "CONDENSING UNIT ROOFING SUPPORT DETAIL" ON ARCHITECTURAL SHEETS FOR FLORIDA PRODUCT APPROVAL INFORMATION.
- 8 FOR SPECIFIC WIND LOADING REQUIREMENTS NOT TO EXCEED 180 MPH. SEE STRUCTURAL DRAWINGS.
- 9 MECHANICAL CONTRACTOR TO PROVIDE SHEET METAL CURBS CAP FOR REFRIGERATION EQUIPMENT CURBS. SEE ARCHITECTURAL DRAWINGS FOR SPECIFIC REQUIREMENTS.

SHEET GENERAL NOTE:

CONTRACTOR RESPONSIBLE FOR USING CURBS PLUS CLIPS ON ALL RTUS. CLIPS ARE DELIVERED TO SITE AS SEPARATE PACKAGE.

1925 Prospect Ave.
Orlando, FL 32814
P (407) 661-9100
F (407) 661-9101
www.efp.com



CLIENT NAME:
WAWA
280 WEST BALTIMORE PIKE
WAWA, PENNSYLVANIA 19083

PROJECT NAME:
WAWA F85FB 2019.01 STORE #5357-DOR
NW 87TH AVE. & NW 33RD ST.
DORAL, FLORIDA

SHEET TITLE:
HVAC ROOF PLAN

No.	Description	Date
1	PRELIMINARY	08/03/2018
2	PRELIMINARY REVIEW SET	08/17/2018
3	REVISED SET	08/20/2018
4	REVISED SET	08/20/2018

PROJECT NO.: 217108	DATE: 08/03/2018	DESIGNED BY: WAWA	CHECKED BY: JLD
-------------------------------	----------------------------	-----------------------------	---------------------------

M2