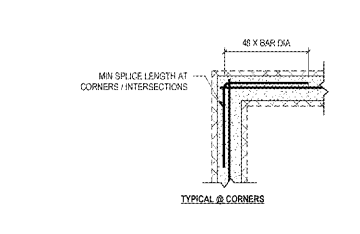
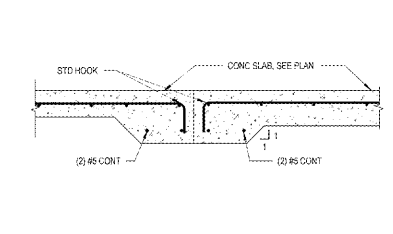


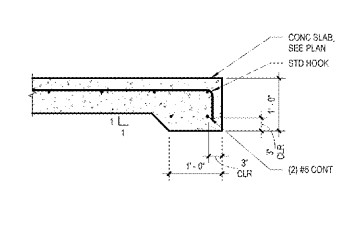
13 BASEPLATE DETAIL
S10 / 1 1/2" x 1'-0"



8 CONTINUITY CORNER, TYP
S10 / 3/4" x 1'-0"



4 SLAB TRANSITION DETAIL
S10 / 3/4" x 1'-0"

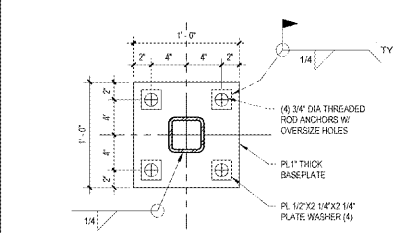


3 THICKENED EDGE DETAIL
S10 / 3/4" x 1'-0"

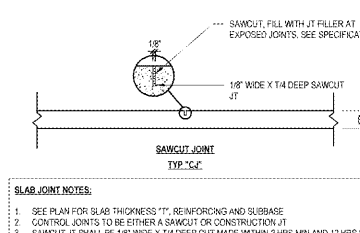
GENERAL NOTES:

- EXTERIOR FOOTINGS HEREIN ARE RELATIVE TO ADJACENT GRADE.
- SEE ARCH / PLUMBING DRAWINGS FOR DRAIN SLOPES, ELEVATIONS AND SLAB RECESSES.
- OPENING / RE-ENTRANT CORNER, TYP. PROVIDE (2) #4 X 4'-0" LONG BARS AT MID-HEIGHT OF SLAB.

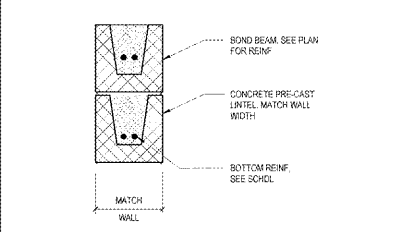
STRUCTURAL - WALL FOUNDATION SCHEDULE			
MARK	WIDTH	FOUNDATION THICKNESS	FOOTING REINF
WF3	3'-0"	1'-6"	(4) #5 CONT TAB & #5 TRANS @ 18" OC TAB



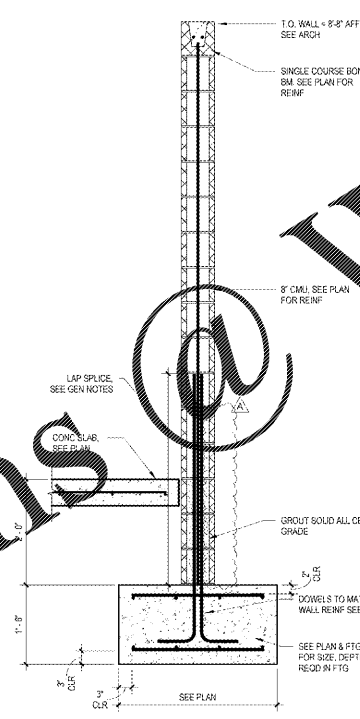
12 BASEPLATE DETAIL
S10 / 1 1/2" x 1'-0"



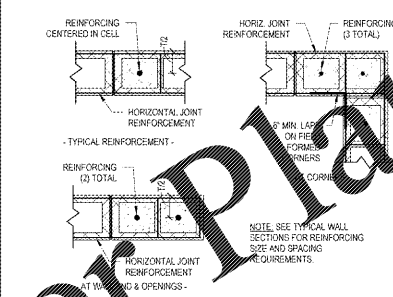
7 GENERAL SLAB JOINT INFORMATION
S10 / 3/4" x 1'-0"



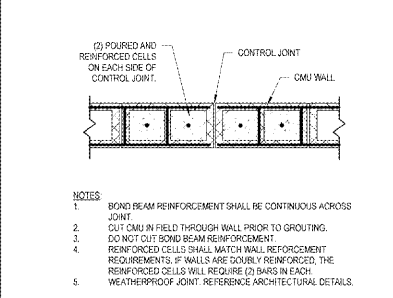
11 CMU LINTEL / BOND BEAM AT DOOR CROSS SECTION
S10 / 1 1/2" x 1'-0"



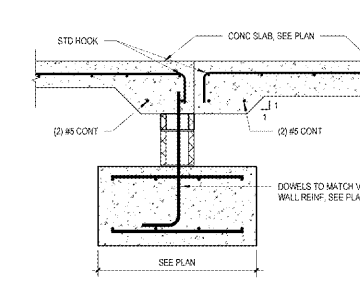
6 FOUNDATION DETAIL
S10 / 3/4" x 1'-0"



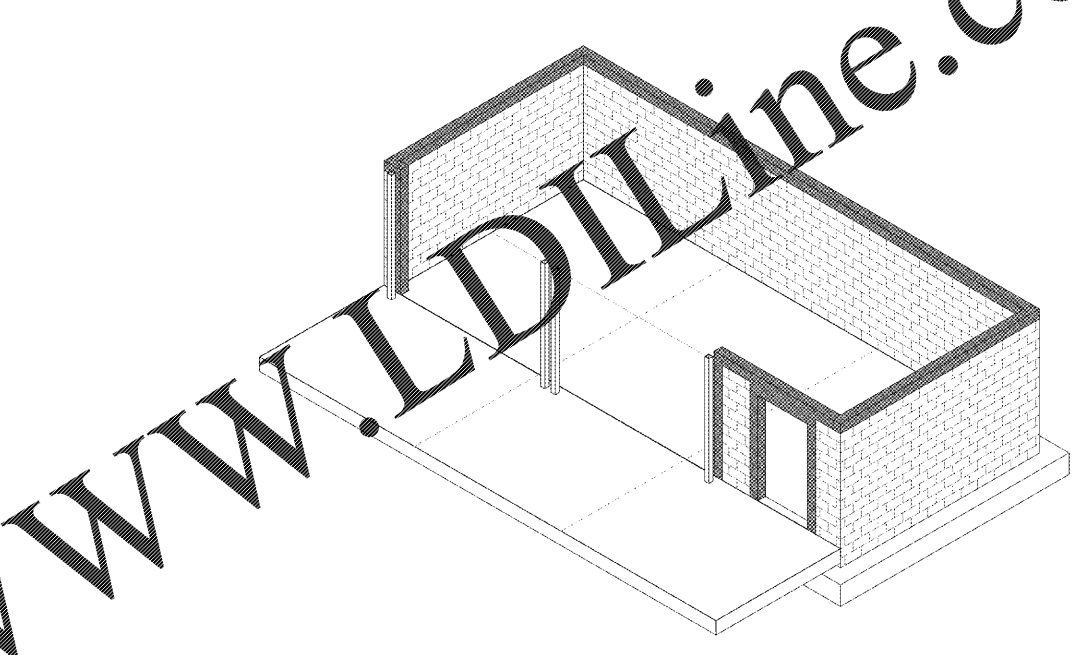
10 TYPICAL CMU DETAILS
S10 / 1'-0" x 1'-0"



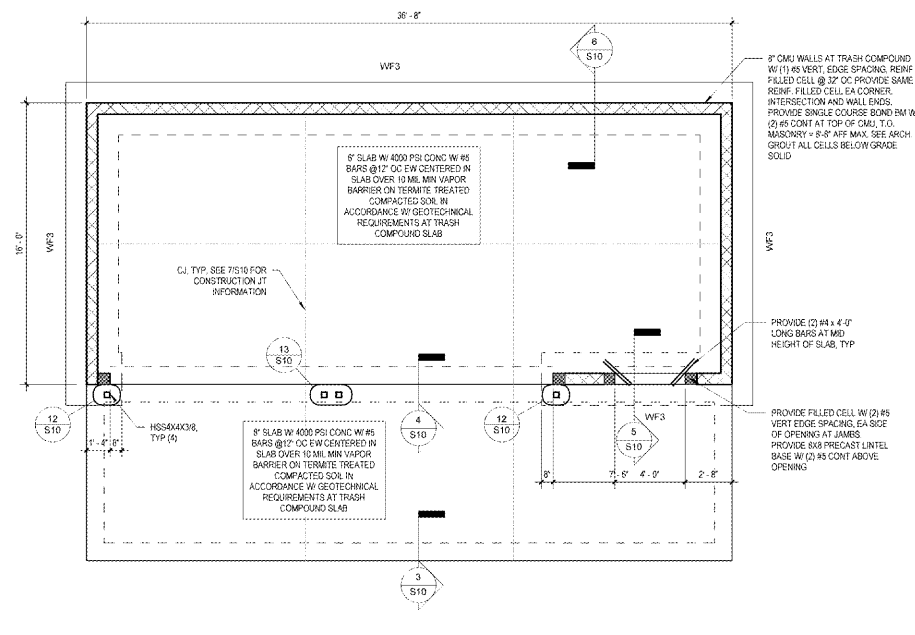
9 CMU CONTROL JOINT
S10 / 1" x 1'-0"



5 SLAB DETAIL AT DOOR
S10 / 3/4" x 1'-0"



2 STRUCTURAL 3D VIEW
S10



1 FOUNDATION PLAN
S10 / 1/4" x 1'-0"

WWW.IDIline.com

Order Plans