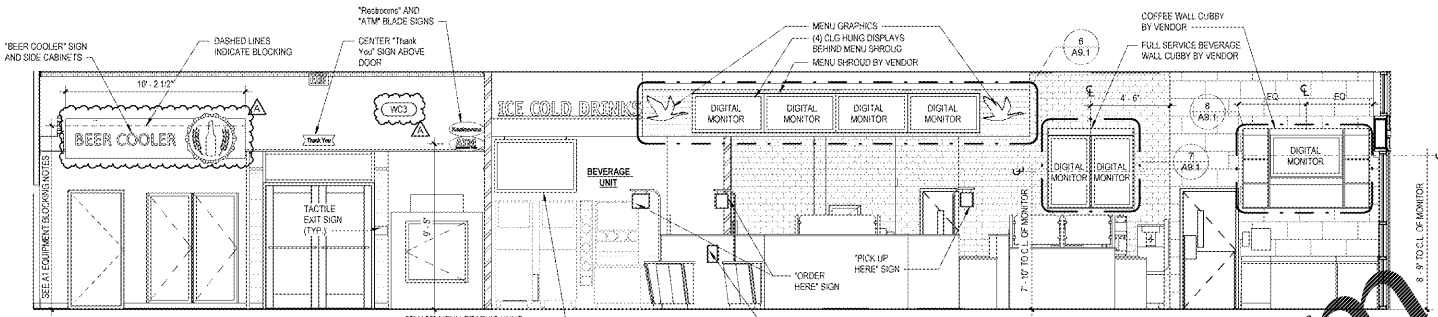
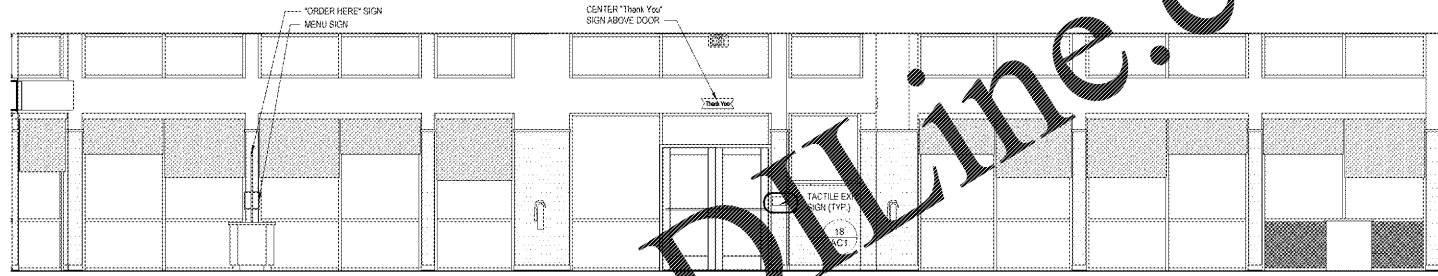


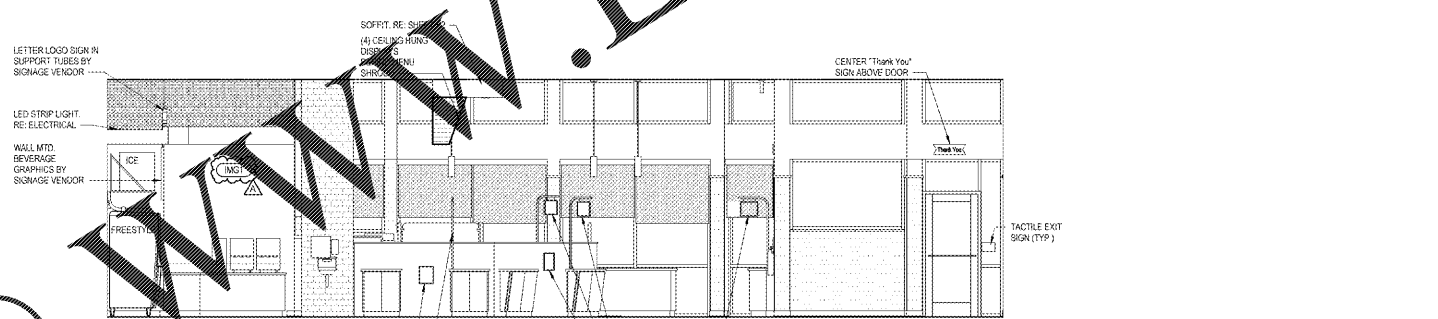
1 GRAPHICS PLAN
G1
1/8" = 1'-0"



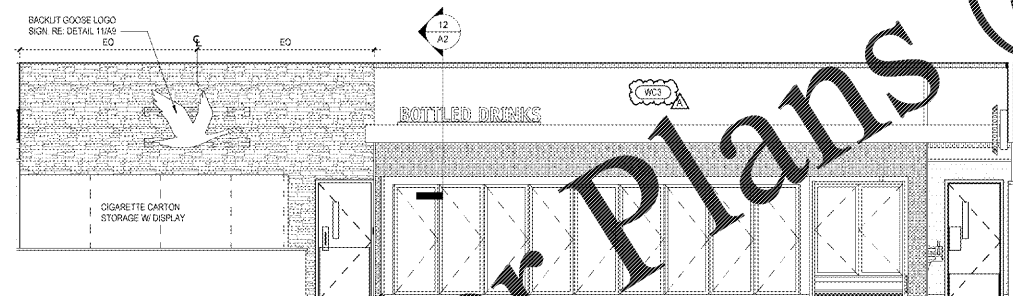
2 GRAPHICS ELEVATION
G1
1/4" = 1'-0"



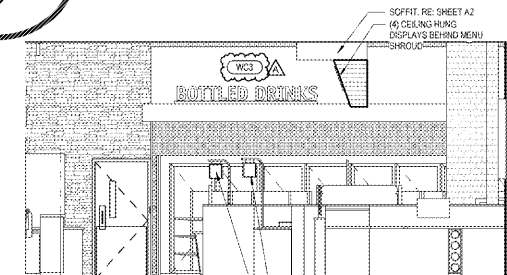
3 GRAPHICS ELEVATION
G1
1/4" = 1'-0"



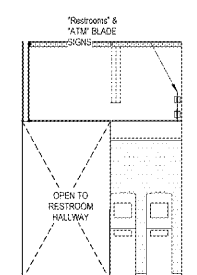
4 GRAPHICS ELEVATION
G1
1/4" = 1'-0"



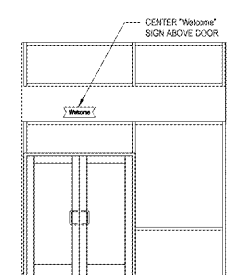
5 GRAPHICS ELEVATION
G1
1/4" = 1'-0"



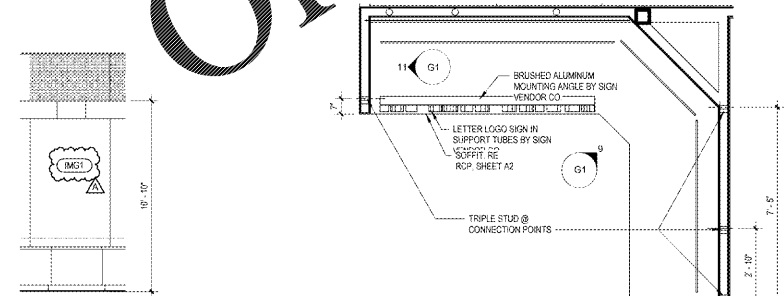
6 GRAPHICS ELEVATION
G1
1/4" = 1'-0"



7 GRAPHICS ELEVATION
G1
1/4" = 1'-0"



8 GRAPHICS ELEVATION
G1
1/4" = 1'-0"



9 ELEVATION @ BEVERAGE AREA
G1
1/4" = 1'-0"

13 PLAN @ BEVERAGE AREA GRAPHICS
G1
3/8" = 1'-0"

11 EAST ELEVATION @ BEVERAGE AREA
G1
1/4" = 1'-0"

| GRAPHICS LEGEND | |
|-------------------|---------------------------------------|
| GRAPHICS | DESCRIPTION |
| [Thank You] | WALL MOUNTED SIGN |
| [Welcome] | WALL MOUNTED SIGN |
| [Exit Only] | WALL MOUNTED SIGN |
| [Digital Monitor] | DIGITAL MONITOR, BACKER BOARD MOUNTED |
| [Digital Monitor] | DIGITAL MONITOR, CEILING MOUNTED |
| [Menu Board] | MENU BOARD, BACKER BOARD MOUNTED |

- GENERAL NOTES**
- LETTER GRAPHICS ARE FURNISHED AND INSTALLED BY OTHERS.
 - MENU BOARDS ARE FURNISHED BY OTHERS AND INSTALLED BY GC.
 - DIGITAL MONITOR, BRACKET AND COLUMN MOUNT SUPPORT ARE TO BE FURNISHED BY WAWA AND INSTALLED BY GC. CONTRACTOR SHALL COORDINATE AND INSTALL NECESSARY MISCELLANEOUS STEEL FOR COLUMN MOUNT ATTACHMENT.
 - DIGITAL MONITOR CEILING HUNG LOCATION DIMENSIONS SHOWN ON PLAN ARE TO THE CENTER OF COLUMN SUPPORT AND SHOULD BE VERIFIED IN THE FIELD.
 - WAWA REPRESENTATIVE TO VERIFY FINAL LOCATION OF ALL GRAPHICS.
 - SEE FLOOR PLAN FOR LOCATIONS AND GRAPHICS REQUIRED.

1925 Prospect Ave.
Orlando, FL 32814
P (407) 661-9100
F (407) 661-9101
www.sfp.com

Cuhaci & Peterson
Architects Engineers Planners

CLIENT NAME
WAWA
260 WEST BALTIMORE PIKE
WAWA, PENNSYLVANIA 19063

PROJECT NAME
WAWA F85FB 2019.01 STORE #5357-DOR
NW 87TH AVE. & NW 33RD ST.
DORAL, FLORIDA

SHEET TITLE
GRAPHICS PLAN AND ELEVATIONS

| Revision Schedule | |
|-------------------|------------------------|
| No. | Description |
| 1 | ISSUED FOR PERMIT |
| 2 | PRELIMINARY REVIEW SET |
| 3 | REV. 03/2018 |
| 4 | REV. 03/2018 |
| 5 | REV. 03/2018 |
| 6 | REV. 03/2018 |
| 7 | REV. 03/2018 |
| 8 | REV. 03/2018 |
| 9 | REV. 03/2018 |
| 10 | REV. 03/2018 |
| 11 | REV. 03/2018 |
| 12 | REV. 03/2018 |
| 13 | REV. 03/2018 |
| 14 | REV. 03/2018 |
| 15 | REV. 03/2018 |
| 16 | REV. 03/2018 |
| 17 | REV. 03/2018 |
| 18 | REV. 03/2018 |
| 19 | REV. 03/2018 |
| 20 | REV. 03/2018 |
| 21 | REV. 03/2018 |
| 22 | REV. 03/2018 |
| 23 | REV. 03/2018 |
| 24 | REV. 03/2018 |
| 25 | REV. 03/2018 |
| 26 | REV. 03/2018 |
| 27 | REV. 03/2018 |
| 28 | REV. 03/2018 |
| 29 | REV. 03/2018 |
| 30 | REV. 03/2018 |
| 31 | REV. 03/2018 |
| 32 | REV. 03/2018 |
| 33 | REV. 03/2018 |
| 34 | REV. 03/2018 |
| 35 | REV. 03/2018 |
| 36 | REV. 03/2018 |
| 37 | REV. 03/2018 |
| 38 | REV. 03/2018 |
| 39 | REV. 03/2018 |
| 40 | REV. 03/2018 |
| 41 | REV. 03/2018 |
| 42 | REV. 03/2018 |
| 43 | REV. 03/2018 |
| 44 | REV. 03/2018 |
| 45 | REV. 03/2018 |
| 46 | REV. 03/2018 |
| 47 | REV. 03/2018 |
| 48 | REV. 03/2018 |
| 49 | REV. 03/2018 |
| 50 | REV. 03/2018 |
| 51 | REV. 03/2018 |
| 52 | REV. 03/2018 |
| 53 | REV. 03/2018 |
| 54 | REV. 03/2018 |
| 55 | REV. 03/2018 |
| 56 | REV. 03/2018 |
| 57 | REV. 03/2018 |
| 58 | REV. 03/2018 |
| 59 | REV. 03/2018 |
| 60 | REV. 03/2018 |
| 61 | REV. 03/2018 |
| 62 | REV. 03/2018 |
| 63 | REV. 03/2018 |
| 64 | REV. 03/2018 |
| 65 | REV. 03/2018 |
| 66 | REV. 03/2018 |
| 67 | REV. 03/2018 |
| 68 | REV. 03/2018 |
| 69 | REV. 03/2018 |
| 70 | REV. 03/2018 |
| 71 | REV. 03/2018 |
| 72 | REV. 03/2018 |
| 73 | REV. 03/2018 |
| 74 | REV. 03/2018 |
| 75 | REV. 03/2018 |
| 76 | REV. 03/2018 |
| 77 | REV. 03/2018 |
| 78 | REV. 03/2018 |
| 79 | REV. 03/2018 |
| 80 | REV. 03/2018 |
| 81 | REV. 03/2018 |
| 82 | REV. 03/2018 |
| 83 | REV. 03/2018 |
| 84 | REV. 03/2018 |
| 85 | REV. 03/2018 |
| 86 | REV. 03/2018 |
| 87 | REV. 03/2018 |
| 88 | REV. 03/2018 |
| 89 | REV. 03/2018 |
| 90 | REV. 03/2018 |
| 91 | REV. 03/2018 |
| 92 | REV. 03/2018 |
| 93 | REV. 03/2018 |
| 94 | REV. 03/2018 |
| 95 | REV. 03/2018 |
| 96 | REV. 03/2018 |
| 97 | REV. 03/2018 |
| 98 | REV. 03/2018 |
| 99 | REV. 03/2018 |
| 100 | REV. 03/2018 |

PROJECT NO.
217108

DATE
08-03-2018

DRAWN
AA

CHECKED
DU

G1