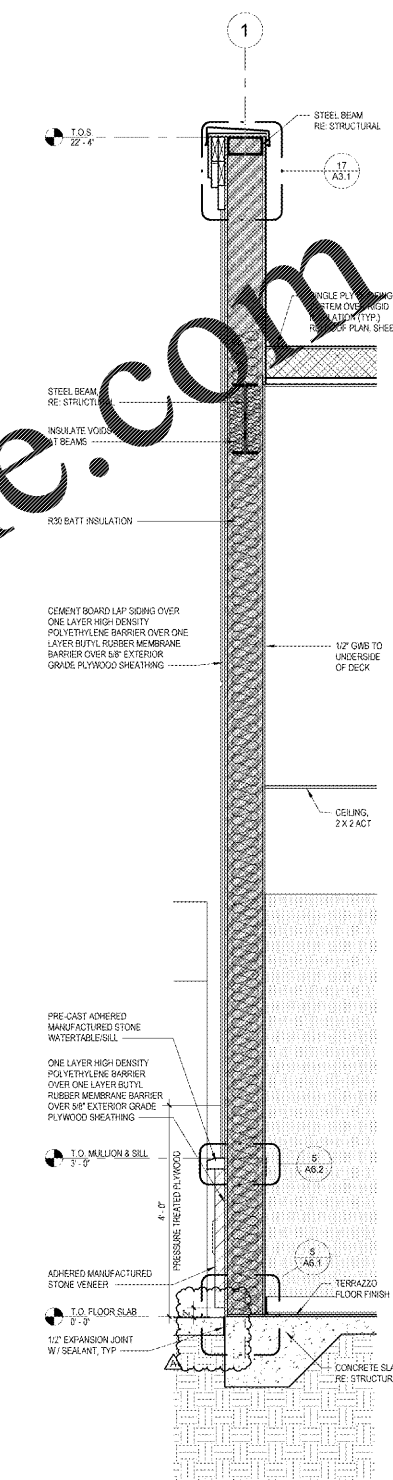
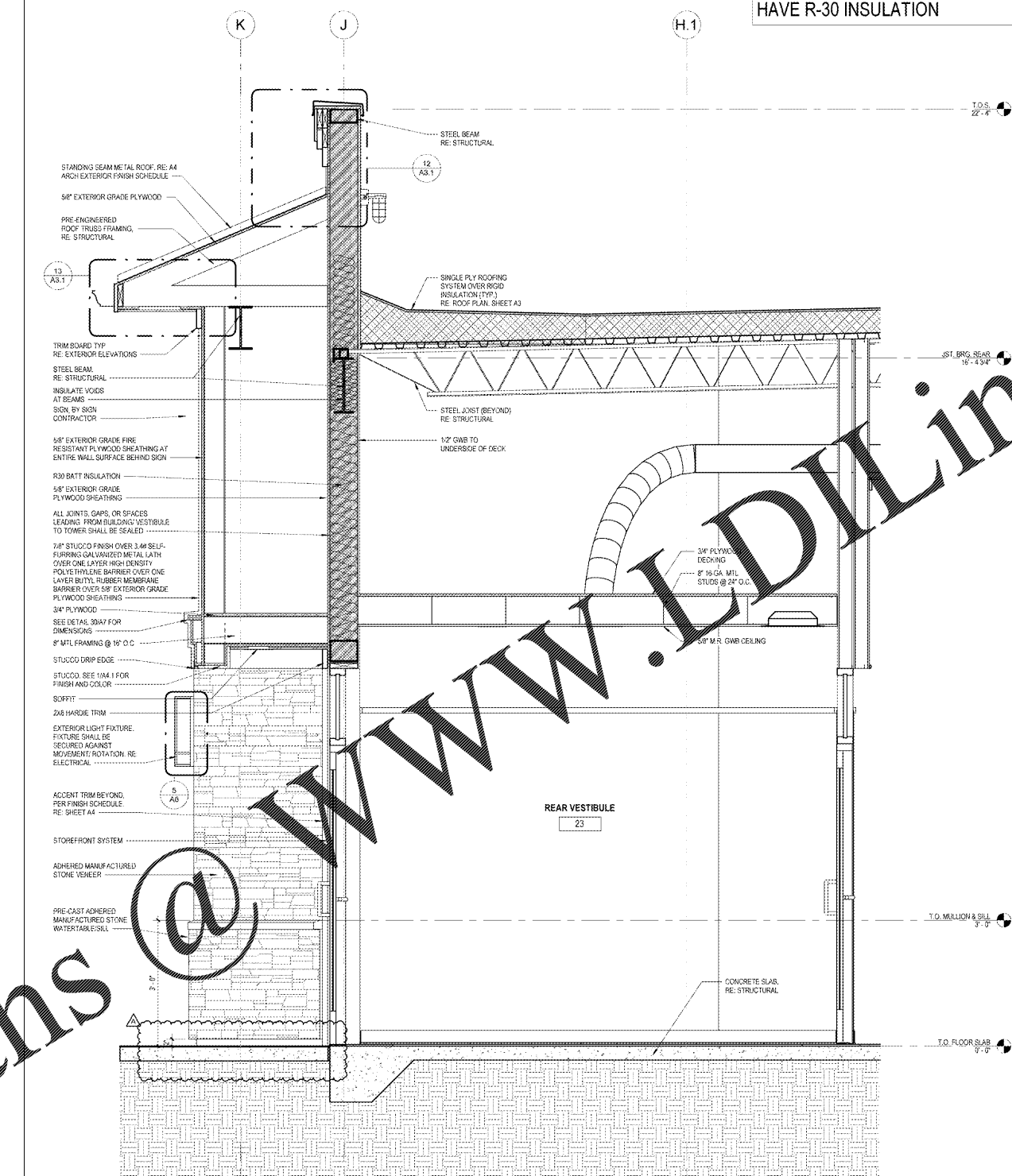
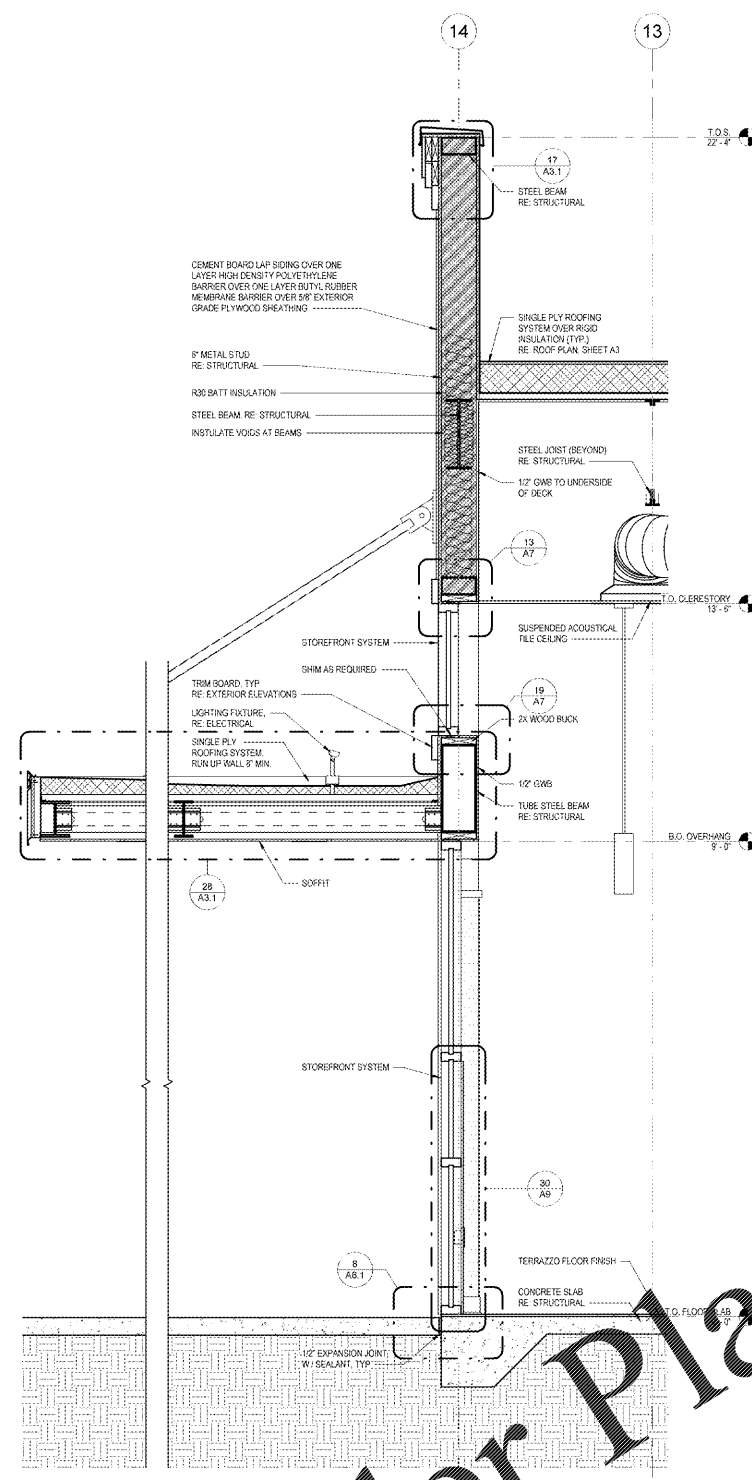


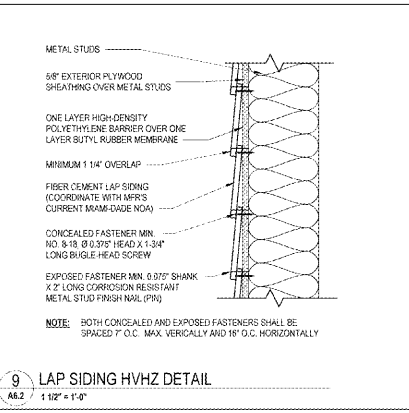
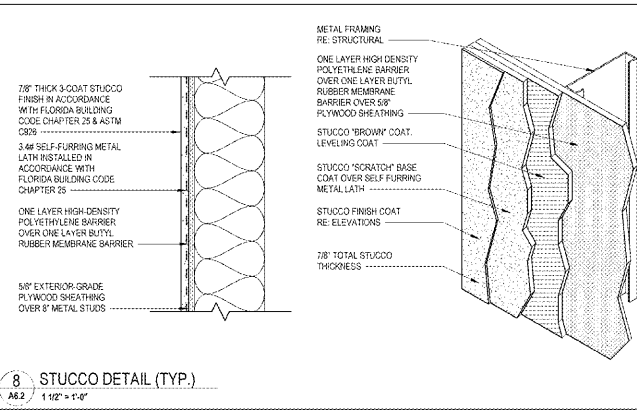
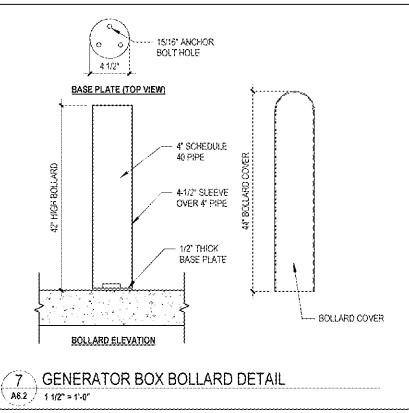
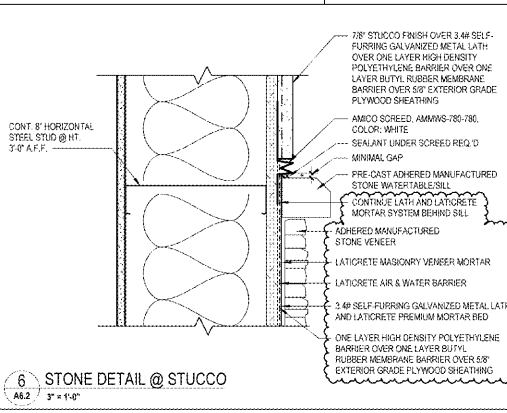
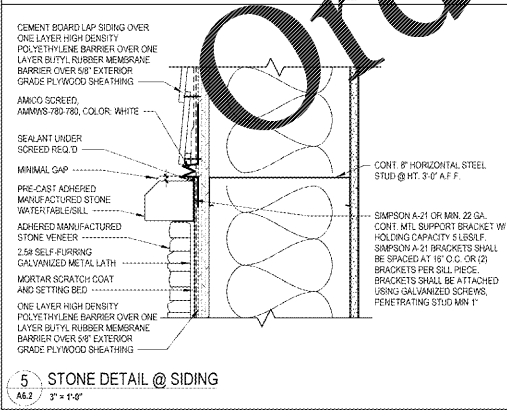
NOTE: ALL EXTERIOR WALLS TO HAVE R-30 INSULATION



1 SIDE WALL SECTION
A6.2 3/4" = 1'-0"

3 REAR WALL SECTION
A6.2 3/4" = 1'-0"

4 SIDE WALL SECTION
A6.2 3/4" = 1'-0"



5 STONE DETAIL @ SIDING
A6.2 3" = 1'-0"

6 STONE DETAIL @ STUCCO
A6.2 3" = 1'-0"

7 GENERATOR BOX BOLLARD DETAIL
A6.2 1 1/2" = 1'-0"

8 STUCCO DETAIL (TYP.)
A6.2 1 1/2" = 1'-0"

9 LAP SIDING HVHZ DETAIL
A6.2 1 1/2" = 1'-0"

Order Plans @ www.LDILine.com

1925 Prospect Ave.
Orlando, FL 32814
P (407) 661-9100
F (407) 661-9101
www.sfp.com

Chhabri & Peterson
Architects Engineers Planners

CLIENT NAME
WAWA
280 WEST BALTIMORE PIKE
WAWA, PENNSYLVANIA 19063

PROJECT NAME
WAWA F85FB 2019.01 STORE #5357-DOR
NW 87TH AVE. & NW 3RD ST.
DORAL, FLORIDA

SHEET TITLE
WALL SECTIONS AND DETAILS

Revision Schedule	
No.	Description
1	ISSUED FOR PERMIT
2	ISSUED FOR CONSTRUCTION
3	ISSUED FOR CONSTRUCTION
4	ISSUED FOR CONSTRUCTION
5	ISSUED FOR CONSTRUCTION
6	ISSUED FOR CONSTRUCTION
7	ISSUED FOR CONSTRUCTION
8	ISSUED FOR CONSTRUCTION
9	ISSUED FOR CONSTRUCTION
10	ISSUED FOR CONSTRUCTION

A6.2