

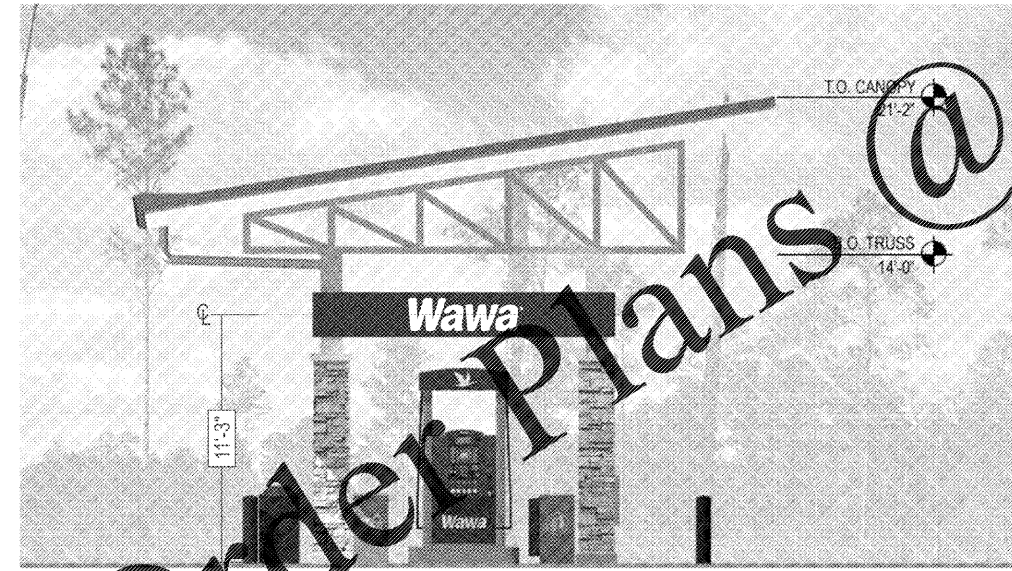
2'-0 3/8" X 13'-8" NON-ILLUMINATED GAS PUMP SPANNER (STRAIGHT PUMPS)

QTY: 2
STANDARD SPECS - SEE COLOR SPECIFICATION LIBRARY

SCALE: 1/2"=1'-0"

DETAIL @ TOP VIEW

SCALE: 3"=1'-0"



CANOPY ELEVATION (STRAIGHT PUMPS)

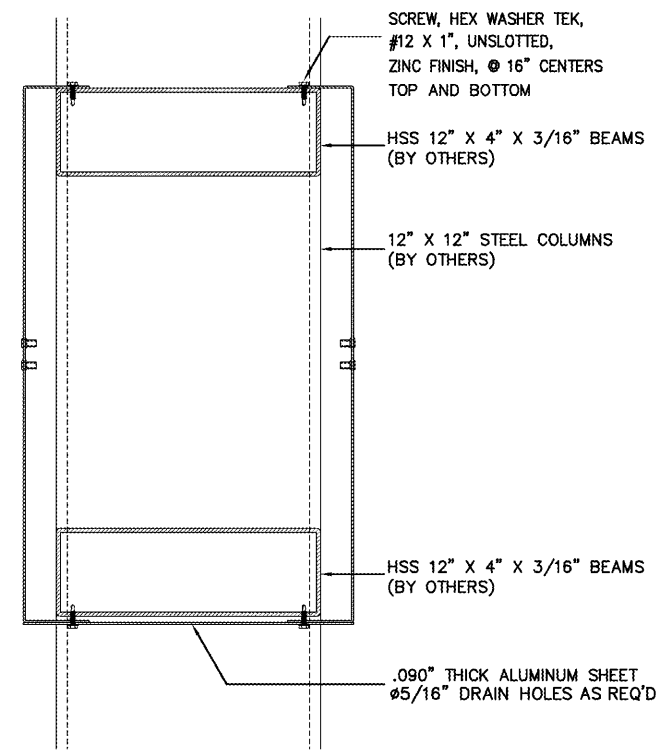
SCALE: 1/4"=1'-0"

AREA/WEIGHT

SIGN SQUARE FOOTAGE:
27.8 sq. ft.
ESTIMATED SIGN WEIGHT:
120 Lb.

TOLERANCE: ± 1/16" ON ALL DIMENSIONS

DESIGN LOADS:
170 MPH WIND LOAD
RISK CATEGORY II, EXPOSURE C.
FLORIDA BUILDING CODE 6TH EDITION (2017)



SECTION @ SPANNER SIGN

SCALE: 3"=1'-0"

Drawing prepared by: PROPOSED SIGNAGE		Drawing prepared for: Wawa		Rev #:	Req#:	Date:	Req. By:	Drawn By:	Revision Description:	Rev #:	Req#:	Date:	Req. By:	Drawn By:	Revision Description:	Drawings are the exclusive property of ICON. Any unauthorized use or duplication is not permitted.
Location:	Proj #:	Original	267826	02/21/18	SG	ABP										
NW 87th Ave & NW 33rd Street	3750	Rev 1	268520	03/06/18	SG	ABP			See request for details							
Doral, FL.	Loc #:	Rev 2	302217	08/10/18	SG	ABP			See request for details							
File Path:	5357	Rev 3	304746	10/08/18	KD	AM			Show White numbers instead of Blue on the LED gas price display on Pylon. "Ethanol Free" will remain Blue.							
Active\ACCOUNTS\Wawa\Locations\Project 3570\3570_5357_Doral_FL_24x36_R4.cdr		Rev 4	309814	02/27/19	SG	MM			Updated Spanners and canopy page							
		Rev 5														
		Rev 6														

