

AREA



SYMBOL:	QTY:	LABEL:
	4	A4

ARE-EDG-3MB-DA-06-E-UL-WH-700-57K

SYMBOL:	QTY:	LABEL:
	1	B2

ARE-EDG-4M-DA-06-E-UL-WH-700-57K

SYMBOL:	QTY:	LABEL:
	4	B4

ARE-EDG-4MB-DA-06-E-UL-WH-700-57K

Cree Edge™ Series

LED Recessed Canopy Luminaire

Product Description

The Cree Edge™ Series is a recessed canopy luminaire designed for rugged outdoor applications. It features a die-cast aluminum housing, a polycarbonate lens, and a heavy-duty mounting bracket. The luminaire is designed for use in wet and damp locations and is suitable for use in hazardous areas. It is available in three sizes: 3MB, 4M, and 4MB. The luminaire is designed for use in wet and damp locations and is suitable for use in hazardous areas. It is available in three sizes: 3MB, 4M, and 4MB.

Performance Summary

• Fabricated from die-cast aluminum housing
• Made in the U.S.A. of U.S. and imported parts
• 0-10V dimming
• ETL, UL, and IES listed
• 5-year warranty

Accessories

• LED Driver
• Mounting Bracket
• Lens
• Lens Gasket
• Lens Sealant
• Lens Gasket
• Lens Sealant

Ordering Information

Part Number: ARE-EDG-3MB-DA-06-E-UL-WH-700-57K

Product Code	Quantity	Label
ARE-EDG-3MB-DA-06-E-UL-WH-700-57K	4	A4
ARE-EDG-4M-DA-06-E-UL-WH-700-57K	1	B2
ARE-EDG-4MB-DA-06-E-UL-WH-700-57K	4	B4



CANOPY



SYMBOL:	QTY:	LABEL:
	24	C1

CAN-304-SL-RD-06-E-UL-WH-525-57K

304 Series™

LED Recessed Canopy Luminaire

Product Description

The 304 Series™ is a recessed canopy luminaire designed for rugged outdoor applications. It features a die-cast aluminum housing, a polycarbonate lens, and a heavy-duty mounting bracket. The luminaire is designed for use in wet and damp locations and is suitable for use in hazardous areas. It is available in three sizes: 3MB, 4M, and 4MB. The luminaire is designed for use in wet and damp locations and is suitable for use in hazardous areas. It is available in three sizes: 3MB, 4M, and 4MB.

Performance Summary

• Fabricated from die-cast aluminum housing
• Made in the U.S.A. of U.S. and imported parts
• 0-10V dimming
• ETL, UL, and IES listed
• 5-year warranty

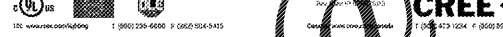
Accessories

• LED Driver
• Mounting Bracket
• Lens
• Lens Gasket
• Lens Sealant
• Lens Gasket
• Lens Sealant

Ordering Information

Part Number: CAN-304-SL-RD-06-E-UL-WH-525-57K

Product Code	Quantity	Label
CAN-304-SL-RD-06-E-UL-WH-525-57K	24	C1



WALL MOUNTED



SYMBOL:	QTY:	LABEL:
	5	W1

SEC-EDG-3M-WM-04-E-UL-WH-350-57K

Cree Edge™ Series

LED Security Wall Pack Luminaire

Product Description

The Cree Edge™ Series is a wall-mounted security luminaire designed for rugged outdoor applications. It features a die-cast aluminum housing, a polycarbonate lens, and a heavy-duty mounting bracket. The luminaire is designed for use in wet and damp locations and is suitable for use in hazardous areas. It is available in three sizes: 3MB, 4M, and 4MB. The luminaire is designed for use in wet and damp locations and is suitable for use in hazardous areas. It is available in three sizes: 3MB, 4M, and 4MB.

Performance Summary

• Fabricated from die-cast aluminum housing
• Made in the U.S.A. of U.S. and imported parts
• 0-10V dimming
• ETL, UL, and IES listed
• 5-year warranty

Accessories

• LED Driver
• Mounting Bracket
• Lens
• Lens Gasket
• Lens Sealant
• Lens Gasket
• Lens Sealant

Ordering Information

Part Number: SEC-EDG-3M-WM-04-E-UL-WH-350-57K

Product Code	Quantity	Label
SEC-EDG-3M-WM-04-E-UL-WH-350-57K	5	W1



Cree Edge™ LED Area Light Luminaire

Product Specifications

- Die-cast aluminum housing
- Polycarbonate lens
- Heavy-duty mounting bracket
- 0-10V dimming
- ETL, UL, and IES listed
- 5-year warranty

Electrical System

- Input Voltage: 120V AC
- Power Factor: 0.95
- Total Harmonic Distortion: <math>THD < 10\%</math>
- Maximum Input Current: 1.5A
- Maximum Output Current: 1.5A

Regulatory & Voluntary Qualifications

- ETL Listed
- UL Listed
- IES Listed
- 5-year warranty

Ordering Information

Part Number: ARE-EDG-3MB-DA-06-E-UL-WH-700-57K

Product Code	Quantity	Label
ARE-EDG-3MB-DA-06-E-UL-WH-700-57K	4	A4
ARE-EDG-4M-DA-06-E-UL-WH-700-57K	1	B2
ARE-EDG-4MB-DA-06-E-UL-WH-700-57K	4	B4



www.cree.com | 1-800-391-5531 | 1-800-391-5531

304 Series™ LED Recessed Canopy Luminaire

Product Specifications

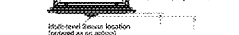
- Die-cast aluminum housing
- Polycarbonate lens
- Heavy-duty mounting bracket
- 0-10V dimming
- ETL, UL, and IES listed
- 5-year warranty

Electrical System

- Input Voltage: 120V AC
- Power Factor: 0.95
- Total Harmonic Distortion: <math>THD < 10\%</math>
- Maximum Input Current: 1.5A
- Maximum Output Current: 1.5A

Regulatory & Voluntary Qualifications

- ETL Listed
- UL Listed
- IES Listed
- 5-year warranty



www.cree.com | 1-800-391-5531 | 1-800-391-5531

Cree Edge™ LED Security Wall Pack Luminaire

Product Specifications

- Die-cast aluminum housing
- Polycarbonate lens
- Heavy-duty mounting bracket
- 0-10V dimming
- ETL, UL, and IES listed
- 5-year warranty

Electrical System

- Input Voltage: 120V AC
- Power Factor: 0.95
- Total Harmonic Distortion: <math>THD < 10\%</math>
- Maximum Input Current: 1.5A
- Maximum Output Current: 1.5A

Regulatory & Voluntary Qualifications

- ETL Listed
- UL Listed
- IES Listed
- 5-year warranty



www.cree.com | 1-800-391-5531 | 1-800-391-5531

www.LDILine.com

Order Plans @

DATE: 05/09/19

PROJECT NO.:

SHEET NUMBER: LT-2

FLORIDA

MIAMI

3300 NW 87TH AVE.

Wawa

PHOTOMETRIC DETAILS

SCALE: AS NOTED

DESIGNED BY: GR

DRAWN BY: BW

CHECKED BY: GR

ALPHA PACIFICA LLC
LANDSCAPE ARCHITECTURE + PLANNING
1001 N. WINDYWAY BLVD., SUITE 100, MIAMI, FL 33136
(305) 441-1111

REVISIONS:

No.	REVISIONS	DATE	BY
1	REVISED PER CIVIL BASE	05/09/19	BW

rad leonard associates
PHOTOMETRIC ANALYSIS

811
KNOW WHAT'S BELOW
BEFORE YOU DIG