

PLANT LIST

| SYM | COMMON NAME | BOTANICAL NAME | DESCRIPTION | QTY. | NATIVE | MATURE HT. | MATURE CANOPY |
|----------------------------------|--------------------------|----------------------------------|---|------|--------|------------|---------------|
| CANOPY TREES | | | | | | | |
| QB | WILD TAMARIND | LYSILOMA BAHAMENSIS | 2.5" CAL., 14" MIN. HT., 4' SPRD. | 8 | YES | 50' | 35' |
| LV | HIGH RISE OAK | QUERCUS VIRGINIANA HIGH RISE | 4" CAL. MIN., 14" MIN. HT., 3' SPRD. | 2 | YES | 35' | 25' |
| CE 2 | GREEN BUTTWOOD | CONOCARPUS ERECTUS | 4" CAL., 14" HT., 3' SPRD. | 9 | YES | 35' | 20' |
| SP | CABBAGE PALM | SABAL PALMETTO | FOR HT. MIN SEE PLAN., CT., HURRICANE CUT | 3 | YES | 50' | 12' |
| PP | MEDJOL PALM | PHOENIX PACTYLIFERA 'MEDJOL' | 18" MIN., 0A HT., STRAIGHT CLEAN TRUNK | 2 | NO | 50' | 15' |
| EX | RELOCATED SABAL PALM | | FREE OF DEBRIS AND DAMAGE, DIAMOND CUT | 11 | | | |
| | RELOCATED BOTTLE PALM | | | 2 | | | |
| | EXISTING TREES TO REMAIN | | | 6 | | | |
| UNDERSTORY TREES | | | | | | | |
| CE | SILVER BUTTWOOD | CONOCARPUS ERECTUS 'SERICEUS' | 2.5" CAL., 10' HT., 3' SPRD. | 14 | YES | 15' | 15' |
| ER | RED STOPPER | EUGENIA RHOMBEA | 2.5" CAL., 10' MIN. HT., 3' SPRD. | 6 | YES | 20' | 15' |
| LI | TONTON GRAPE MYRTLE | LAGERSTROMIA TONTON' | 2.5" CAL., 10' MIN. HT., 3' SPRD., MULTI-STEM | 7 | NO | 10' | 10' |
| HEDGE & ACCENTS | | | | | | | |
| CI | COCORLUM | CHRYSOBALANUS ICACO 'RED TIP' | 3 GAL., 20" HT. X 14" SPRD., 30" O.C. | 133 | YES | | |
| EA | WHITE STOPPER | EUGENIA AUXILLARIS | 3 GAL., 18" MIN. HT. X 14" SPRD., 30" O.C. | 154 | YES | | |
| CF | CLUSIA | CLUSIA FLAVA | 7 GAL., 36" HT. X 24" SPRD., 36" O.C. | 1 | NO | | |
| SHRUBS & GROUND COVER | | | | | | | |
| JBP | BLUE PACIFIC JUNIPER | JUNIPERUS CONFERTA | 1 GAL., 3" HT. X 18" O.C. | 613 | NO | | |
| LM | EMERALD GODDESS LIROPE | LIROPE MUSCARI 'EMERALD GODDESS' | 1 GAL., 5 BUSH PER POT, 18" O.C. | 515 | NO | | |
| LC | RUBY LOROPETALUM | LOROPETALUM CHINENSIS | 18" X 10" SPRD., 30" O.C. | 162 | NO | | |
| SR | SAW PALMETTO | SERENOA REPENS | 3 GAL., 20" HT. X 10" SPRD., 30" O.C. | 157 | YES | | |
| MC | MUHY GRASS | MUHLENBERGIA CAPILLARIS | 1 GAL., 15" HT. X 10" SPRD., 30" O.C. | 370 | YES | | |
| ZP | COONTIE | ZAMIA FUMILA | 1 GAL., 15" HT. X 10" SPRD., 30" O.C. | 220 | YES | | |
| TA | SUMMER SUNSET JASMINE | TRACHELOSPERMUM 'SUMMER SUNSET' | 1 GAL., 5" HT. X 8" SPRD., 18" O.C. | 1067 | NO | | |

NOTE: PLANT DESCRIPTIONS ARE FOR GENERAL ACCEPTABLE SPECIFICATIONS. ALL CRITERIA LISTED FOR CONTAINER SIZE, CALIPER, HEIGHT, SPREAD, ETC. MUST BE MET FOR PLANT MATERIAL ACCEPTANCE. FOR EXAMPLE, IF A THREE GALLON SHRUB DOES NOT MEET THE HEIGHT OR SPREAD SPECIFICATION, IT WILL NOT BE ACCEPTED.

IF SPECIFIED PLANTS ARE UNAVAILABLE AT TIME OF CONSTRUCTION, CONTRACTOR MAY REPLACE SPECIFIED PLANTS WITH PLANTS APPROVED BY LANDSCAPE ARCHITECT AND CITY STAFF.

ALL OPEN SPACE AREAS WITHIN THE PROPERTY SHALL BE SODDED UNLESS PAVED, SEEDED AND MULCHED OR PLANTED WITH SHRUBS AND GROUND COVER.

ALL LANDSCAPE AREAS SHALL BE 100% IRRIGATED WITH A CENTRAL AUTOMATIC IRRIGATION SYSTEM INCLUDING A RAIN SENSOR.

CONTRACTOR TO MODIFY EXISTING IRRIGATION SYSTEM TO ENSURE ADEQUATE IRRIGATION FOR ALL NEW PLANT MATERIAL.

CONTRACTOR SHALL REPLACE ANY EXISTING SOD OR OTHER PLANT MATERIALS DAMAGED DURING CONSTRUCTION IN AREAS THAT ARE OUTSIDE PROPOSED LANDSCAPE AS SHOWN ON THE PLAN.

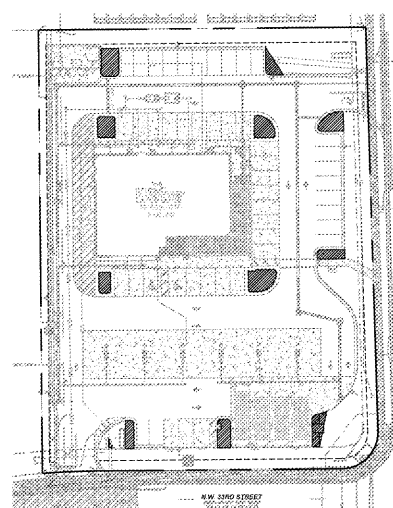
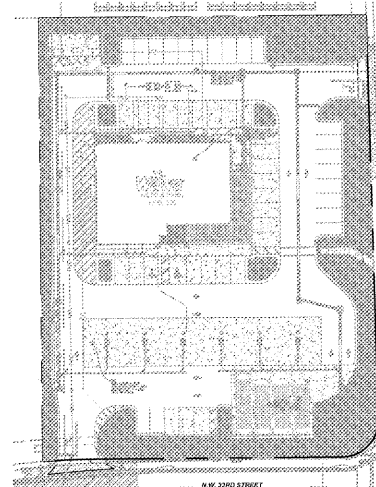
EACH LANDSCAPE ISLAND SHALL HAVE ONE TREE WITH A MINIMUM HEIGHT OF 14 FEET AND A MINIMUM CALIPER OF FOUR INCHES.

ON THE EXISTING MEDIAN, SOD AND LANDSCAPING THAT IS DAMAGED AS A RESULT OF THE CURB WORK ON NW 33 STREET, WILL BE RESTORED.

MIAMI DADE COUNTY LANDSCAPE MANUAL - LANDSCAPE LEGEND CAN BE FOUND ON SHEET TR-1.

LANDSCAPE DATA

| | REQUIRED | PROPOSED |
|---|-----------|-------------------|
| 15 TREES / AC OF NET LOT AREA = 15 TREES X 1.56 AC. (67,947.32 S.F.) | 24 | 60 |
| OPEN SPACE (20% OF NET LOT AREA) = 67,947.32 S.F. X 0.20 | 13,591 SF | 16,953.6 SF (25%) |
| SEC. 71-111 50% MIN. OF REQUIRED TREES TO BE NATIVE SPECIES | 12 | 32 |
| SEC. 71-144 10 SHRUBS / 1 REQUIRED TREE 50% OF REQUIRED SHRUBS TO BE NATIVE SPECIES | 240 | 680 |
| | 120 | 474 |



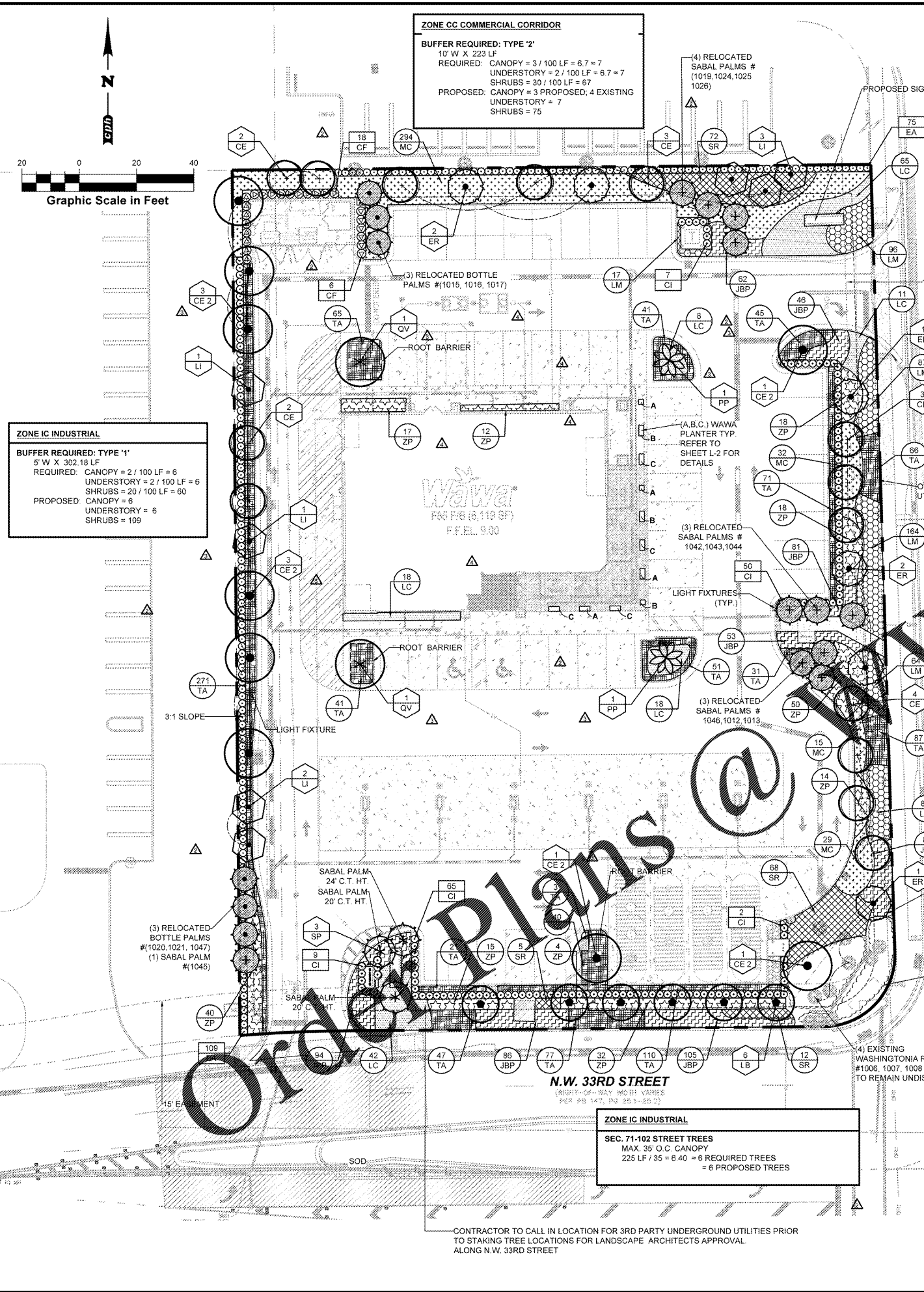
Always call 811 two full business days before you dig

Sunshine811.com
www.sunshine811.com

LANDSCAPE PLAN
WAWA
3300 NW 87TH AVENUE
MIAMI, FLORIDA

Sheet No.
L-1

THIS SHEET NOT VALID FOR CONSTRUCTION UNLESS STAMPED APPROVED



J:\1\2017\Landscapes\DMCO\PreliminaryDesign\Plans\U1207-LSP.dwg May 08, 2019 - 1:53pm jagrant