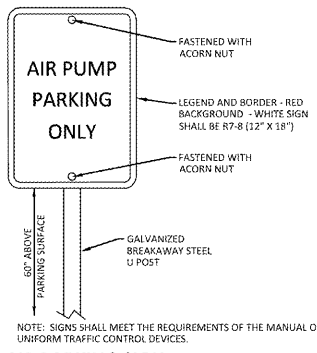


# WAWA SIGNAGE/STRIPING DETAILS

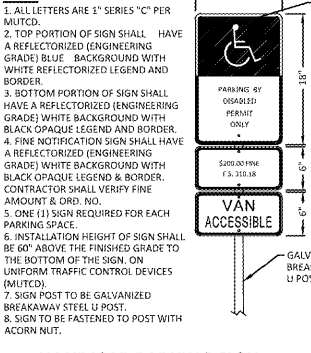
REV. JULY 26, 2017

# WAWA GENERAL DETAILS

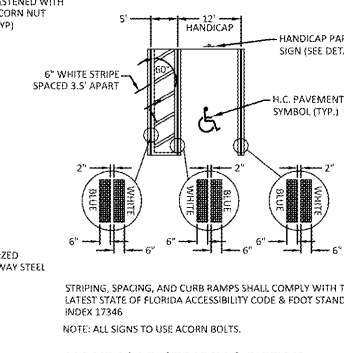
REV. JULY 28, 2016



**AIR PARKING SIGN**  
NTS

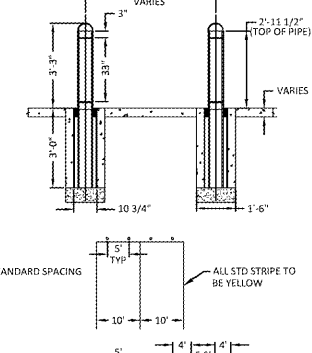


**HANDICAP PARKING SIGN**  
NTS

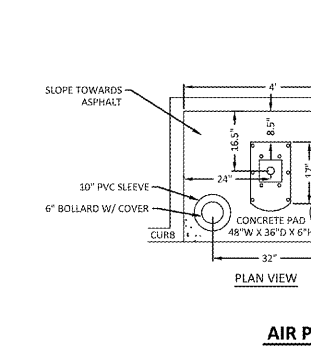


**HANDICAP STRIPING DETAIL**  
NTS

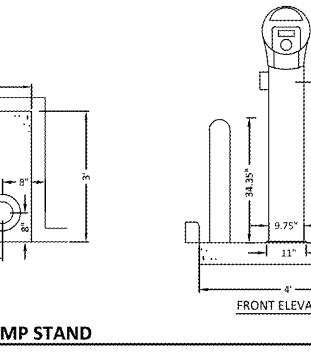
**SIGNAGE AND STRIPING NOTES:**  
1. ALL STANDARD PARKING STRIPES ARE TO BE 4" YELLOW  
2. ARROWS SHOWN IN DRIVE AISLES ARE FOR INFORMATION ONLY AND SHALL NOT BE PAINTED.



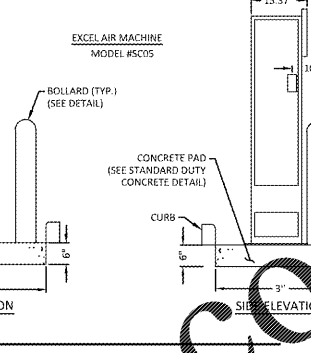
**AIR PUMP STAND**  
NTS



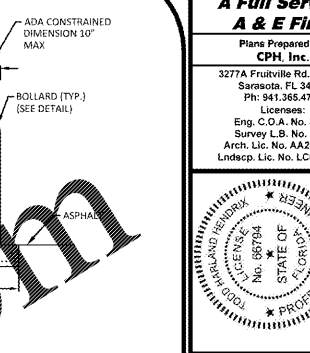
**AIR PUMP SPACE DETAIL**  
NTS



**BOLLARD SPACING/DIMENSION DETAIL**  
NTS



**STANDARD BICYCLE RACK DETAIL**  
NTS



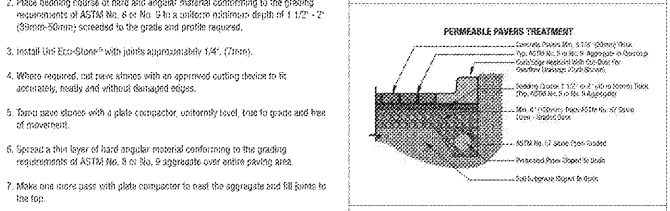
**ADA DETECTABLE CURB WARNING DETAIL**  
NTS

## Uni Eco-Stone®

Uni Eco-Stone® is a permeable pavement application, offers unique advantages over traditional pavements. Uni Eco-Stone® provides a major of surface coverings designed to capture a percentage of surface water run off and infiltrate it to the drainage parking surface. The end results are a reduction of runoff, increase in water quality and mitigation of pollutants impact on the surrounding environment. Paving design, material selection and drainage contribute to make Uni Eco-Stone® a sustainable Best Management Practice for EPA compliance requirements.

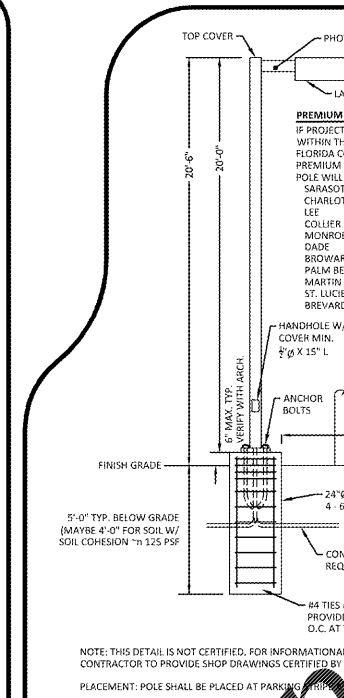
**COMPOSITION AND MANUFACTURE**  
Uni Eco-Stone® is available in one size: Height = 80mm. Uni Eco-Stone® is made from 6" heavy duty cast concrete that meets with ASTM standards and high frequency vibration. Uni Eco-Stone® has a compressive strength greater than 2000 psi. A water absorption maximum of 5% and will meet or exceed ASTM C-695. Note: Always modify the ASTM C-136 - (Paver Test) - The test specimen shall be 90 x 225mm and 2" recovery of 1" to 1.5mm after having a 28-day/28-day curing period. (NTS) apply max. of 2.5 x 1.0

**INSTALLATION**  
1. Excavate suitable, unstable or uncompacted subgrade material. Compact the area. voids: has been cleared as per the engineer's or record (EOR) requirements. Backfill and level with open graded aggregate as per the EOR's structural and hydraulic design.  
2. Place bedding course of hard and angular material conforming to the grading requirements of ASTM No. 8 or No. 56 to a uniform minimum depth of 1 1/2" - 2" (30mm-50mm) screeded to the grade and profile required.  
3. Install Uni Eco-Stone® with joints approximately 1/4" (7mm).  
4. Where required, cut back stones with an approved cutting device to fit accurately, neatly and without damaged edges.  
5. Form save stones with a plate compactor, uniformly level, line to grade and free of movement.  
6. Spread a thin layer of hard angular material conforming to the grading requirements of ASTM No. 8 or No. 56 aggregate over entire parking area.  
7. Make one runs pass with plate compactor to read the aggregate and fill joints to the top.  
8. Soak and remove surplus joint material.



**PERMEABLE PAVEMENT TREATMENT AND DETENTION**  
1. Concrete Pavers: 6" x 6" x 8" (152mm x 152mm x 203mm) - 100% Recycled  
2. Aggregate: 1/2" to 3/4" (12.5mm to 19mm) - 100% Recycled  
3. Bedding: 1 1/2" to 2" (38mm to 51mm) - 100% Recycled  
4. Subgrade: 12" (305mm) - 100% Recycled  
5. Joint Material: 1/4" (6mm) - 100% Recycled  
6. Sealant: 1/4" (6mm) - 100% Recycled  
7. Filter Fabric: 12" (305mm) - 100% Recycled  
8. Original Grade: 12" (305mm) - 100% Recycled  
9. Bituminous Paving: 1/2" (12.5mm) - 100% Recycled  
10. Subgrade: 12" (305mm) - 100% Recycled

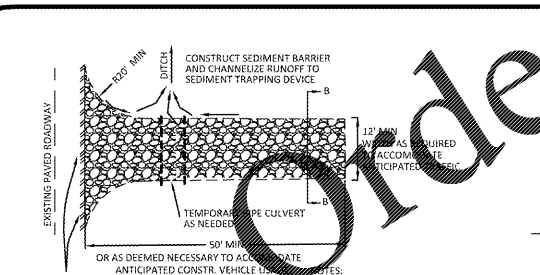
Complete installation & specification details are available by contacting your Pavestone Sales Representative.  
Note: Colors are shown as accurately as possible in brochures & samples, but due to the nature of the product, regional color preferences and variations in print reproduction, colors may not match exactly. For best results in maintaining color consistency, new stones must be installed from several cubic at a time. Efflorescence, a whitish, powder-like deposit, may appear on concrete pavers. This is a natural occurrence in any concrete product and will usually wear off over time.



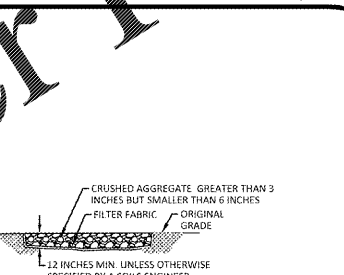
**LIGHT POLE WITH STANDARD ANCHORING DETAIL**  
NTS

## EROSION CONTROL DETAILS

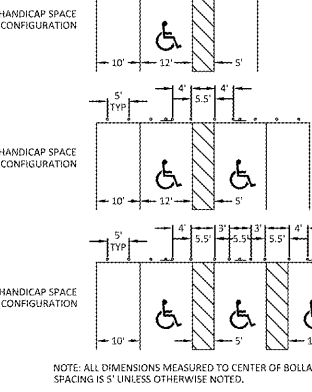
REV. JULY 28, 2016



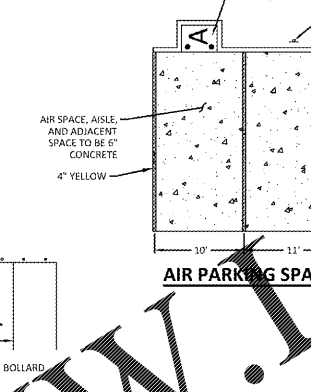
**STABILIZED CONSTRUCTION ENTRANCE / EXIT (TYPE 1)**  
NTS



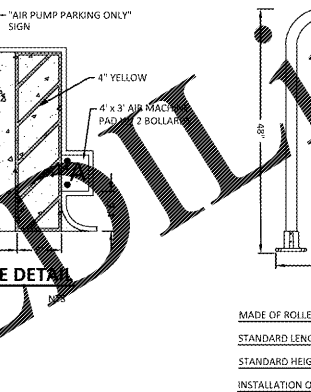
**BOLLARD DETAIL**  
NTS



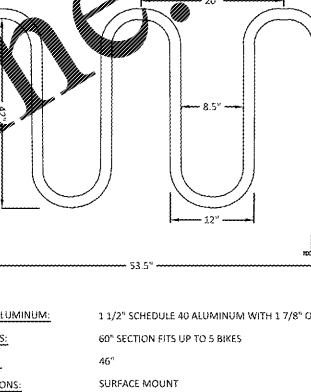
**WAWA TYPE B1 CURB**  
NTS



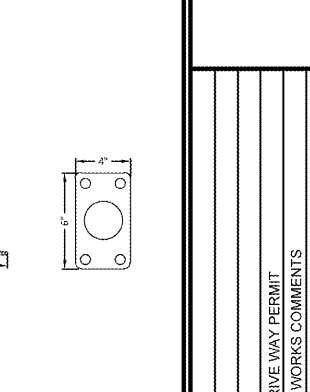
**WAWA TYPE F1 CURB**  
NTS



**GENERAL DETAILS AND CAULK/GROUT DETAIL FOR CONCRETE AREAS**  
NTS



**CAULK/GROUT DETAIL FOR LANDSCAPED & BITUMINOUS AREAS**  
NTS



**EMERGENCY PUMP SHUTOFF DETAIL**  
NTS

**Order Plans @**

**cph**  
www.cphcorp.com  
A Full Service  
A & E Firm  
Plans Prepared By:  
CPH Inc.  
3277A Fruitville Rd., Suite 2  
Sarasota, FL 34237  
Ph: 941.365.4771  
Licenses:  
Eng. C.O.A. No. 3215  
Survey L.B. No. 7143  
Arch. Lic. No. AA2800928  
Landscape Lic. No. LC0000298

Revision	Date	Per City Comments	Per DERM Comments	Per Public Works Comments	Per MDC Drive Way Permit
1	03/08/19				
2	07/18/18				
3	06/12/18				

Designed: J.G.  
Drawn: J.C./J.G.  
Checked: J.L.J.  
Job No.: U1207  
Date: OCT / 2017 © 2019

**WAWA DETAILS**  
**WAWA**  
3300 NW 87TH AVENUE  
MIAMI, FLORIDA

THIS SHEET NOT VALID FOR CONSTRUCTION WITHOUT COMPLETE SET OF PLANS. SEE GENERAL NOTES FOR MASTER LEGEND.  
Sheet No.  
**C.9**