

GENERAL GRADING NOTES

- PRIOR TO ANY DEMOLITION OR CONSTRUCTION ACTIVITY THE CONTRACTOR SHALL INSTALL EROSION AND SEDIMENTATION CONTROL MEASURES SHOWN ON PLANS AND PROVIDED FOR IN FDOT INDEX NO. 102. AS CONSTRUCTION PROGRESSES, THE CONTRACTOR SHALL PERIODICALLY CHECK THE SEDIMENTATION CONTROLS AND REPAIR THEM AS NECESSARY TO KEEP THEM IN GOOD FUNCTIONING ORDER. THE CONTRACTOR SHALL ALSO PROTECT INLETS AND OTHER SITE APPURTENANCES FROM SEDIMENTATION USING PROTECTION AS DETAILED IN FDOT INDEX NO. 102.
- THE CONTRACTOR SHALL CONDUCT GROUND STABILIZING MEASURES (PAVING, GRASSING, MULCHING AND SODDING) AS SOON AS PRACTICABLE FOLLOWING FINAL GRADING OF THE SITE.
- FOLLOWING COMPLETION OF CONSTRUCTION AND COMPLETED STABILIZATION OF POTENTIAL EROSION AREAS, THE CONTRACTOR SHALL PERFORM EROSION SEDIMENTATION CONTROL MEASURES AND CLEAN AND REPAIR ANY AREAS AFFECTED BY THE CONSTRUCTION ACTIVITIES. ANY SILTATION IN THE STORMWATER SYSTEM SHALL BE COMPLETELY FLUSHED PRIOR TO CERTIFICATION OF COMPLETION.
- ALL WORK PERFORMED WITHIN THE RIGHT OF WAY REQUIRES A SEPARATE PERMIT ISSUED BY THE CITY OF DORAL PUBLIC WORKS DEPARTMENTS.
- ACCORDING TO THE NATIONAL FLOOD INSURANCE PROGRAM (NFIP) FLOOD INSURANCE RATE MAP (FIRM) NUMBER 12086C0287L OF COMMUNITY PANEL 12086C0287, EFFECTIVE DATE 9/11/2009 THIS PROPERTY LIES IN ZONE "X".
- THIS PROJECT IS PENDING APPROVAL BY THE DORAL WATER MANAGEMENT DISTRICT.
- CONTRACTOR SHALL FIELD VERIFY ALL SURROUNDING DEVELOPMENT GRADES AND CONTACT ENGINEER IF ANY DISCREPANCIES ARE NOTICED PRIOR TO CONSTRUCTION.
- CONTRACTOR SHALL MAINTAIN POSITIVE DRAINAGE SLOPE AWAY FROM BLDG. AND THAT A MINIMUM SLOPE OF AT LEAST 1% IN THE DIRECTION OF DRAINAGE FLOW INDICATED CAN BE ACHIEVED.

PROPOSED STORM SYSTEM NOTES

- ALL PIPES IN THIS PROJECT IDENTIFIED AS "STORM PIPE" SHALL BE SELECTED FROM THOSE LISTED IN GENERAL NOTES FOR STORM SEWER SYSTEMS, SHEET C.2.
- FOR INLET BOTTOMS SEE FDOT INDEX NO. 200.
- FOR SUPPLEMENTAL DETAILS SEE FDOT INDEX NO. 201.
- FOR CLEANING STRUCTURES, INCLUDING CLEAN-OUTS, SHALL BE INSTALLED WITH TRAFFIC BEARING ALLEYS, TOPS, RINGS AND COVERS, ETC. AS APPLICABLE.
- PROPOSED INLET GRATES SHALL BE H20 TRAFFIC BEARING RETICULINE STEEL.
- PIPE CROSSING AT THIS LOCATION HAS BEEN CALCULATED TO BE LESS THAN 12" CLEARANCE. CONTRACTOR SHALL TAKE THE NECESSARY PRECAUTIONS TO ENSURE JOINTS/BELLS DO NOT ALIGN VERTICALLY AT CROSSING POINT AND SAID JOINTS HAVE AT LEAST 2 FEET HORIZONTAL CLEARANCE FROM CROSSING POINT.

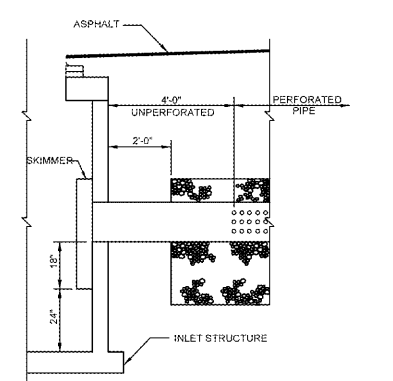
STORM SYSTEM NOTES

- ALL DRAINAGE STRUCTURES, INCLUDING CLEAN-OUTS, SHALL BE INSTALLED WITH TRAFFIC BEARING GRATES, FRAMES, TOPS, RINGS AND COVERS, ETC. AS APPLICABLE.
- ALL PROPOSED INLET GRATES SHALL BE PER FDOT INDEX 232.
- SEE LANDSCAPE PLAN FOR SOIL / SEED & MULCH LIMITS AND TREE PRESERVATION.

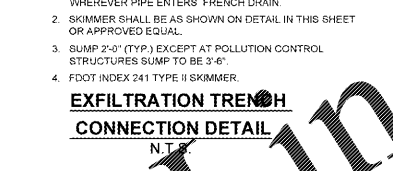
NOTE: THE PRESENCE OF GROUNDWATER MAY BE ENCOUNTERED ON THIS PROJECT. CONTRACTOR'S BID SHALL INCLUDE CONSIDERATION FOR ADDRESSING THIS ISSUE.

LEGEND

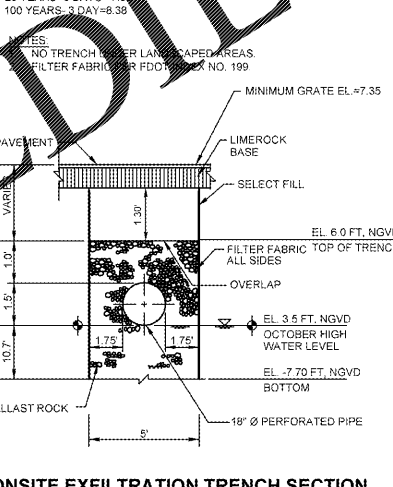
- XXX PROPOSED TOP OF CURB ELEV.
- XXX PROPOSED PAVEMENT ELEV.
- XXX PROPOSED PAVEMENT ELEV.
- XXX PROPOSED TOP OF SIDEWALK ELEV.
- M.E. MATCH EXISTING PAVEMENT / BOTTOM OF CURB ELEV.
- PROPOSED HIGH POINT
- PROP. DRAINAGE FLOW DIRECTION
- PROP. STORM PIPE
- PROP. INLET WITH EXFILTRATION TRENCH
- PROP. STORM INLET
- PROP. CLEAN OUT
- PROPOSED MILLING AND OVERLAY PAVEMENT



EXFILTRATION TRENCH CONNECTION DETAIL
N.T.S.



18" ONSITE EXFILTRATION TRENCH SECTION
N.T.S.



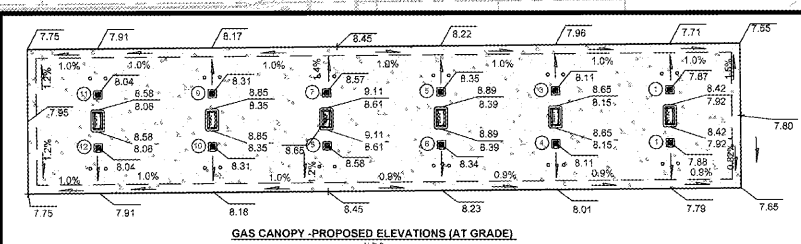
PROPOSED STORM SEWER SCHEDULE

S-1	TYPE "E" INLET PER FDOT INDEX NO. AND 12" OPEN SUMP PER MDC STANDARDS. PER FDOT INDEX #241 TOP ELEV. 7.40 N. INV. 4.15 S. FL. 3.80 BOTTOM ELEV. 2.50	S-13	TYPE "P" MANHOLE PER FDOT INDEX NO. 200 AND 12" OPEN SUMP PER MDC STANDARDS. RIM ELEV. 7.80 N. INV. FL. 3.80 S. FL. 3.80 BOTTOM ELEV. 2.80
S-2	57 L.F. OF 15" N12 HDPE STORM PIPE @ 0.00%	S-14	51 L.F. OF 18" N12 HDPE STORM PIPE @ 0.50%
S-3	TYPE "E" INLET PER FDOT INDEX NO. 232 S. INV. ELEV. 4.05 N. INV. ELEV. 4.05 BOTTOM ELEV. 1.50	S-15	TYPE "C" INLET PER FDOT INDEX NO. 232. TOP ELEV. 7.35 N. FL. 4.30 BOTTOM ELEV. 3.30
S-4	74 L.F. OF 15" N12 HDPE STORM PIPE @ 0.17%	S-16	80 L.F. OF 8" N12 HDPE STORM PIPE @ 0.48%
S-4a	TYPE "C" INLET PER FDOT INDEX NO. 232 W/ MODIFIED TYPE II BOTTOM W/ MINIMUM 4" DIAMETER AND 12" OPEN SUMP PER MDC STANDARDS. WTYPE II SKIMMER PER FOOT TOP ELEV. 7.40 N. INV. 3.90 S. INV. 3.90 BOTTOM ELEV. 2.50	S-17	83 L.F. OF 8" N12 HDPE STORM PIPE @ 1.30%
S-5	TYPE "C" INLET PER FDOT INDEX NO. 232 AND 12" OPEN SUMP PER MDC STANDARDS. PER FDOT INDEX #241 TOP ELEV. 7.45 S. INV. 3.75 E. INV. 3.75 BOTTOM ELEV. 1.50	S-18	CONNECT 4" DOWNSPOUT TO 8" STORM PIPE W/ 6"x4" WYE (TYP. OF 6)
S-5a	76 L.F. OF 18" N12 HDPE STORM PIPE @ 0.17%	S-19	8" CLEANOUT TOP EL. 8.25, INV. ELEV. 4.85
S-6	124 L.F. OF 18" N12 HDPE STORM PIPE @ 0.17%	S-20	8" CLEANOUT TOP EL. 8.40 INV. ELEV. 5.90
S-7	TYPE "P" MANHOLE PER FDOT INDEX NO. 200 AND 12" OPEN SUMP PER MDC DETAIL S02.8 RIM ELEV. 7.90 W. FL. 3.55 E. FL. 3.55 BOTTOM ELEV. 2.50	S-21	8" CLEANOUT TOP EL. 7.10 INV. ELEV. 3.85
S-8	34 L.F. OF 18" N12 HDPE STORM PIPE @ 0.15%	S-22	8" CLEANOUT TOP EL. 7.55 INV. ELEV. (E) 5.00 (SW) INV. ELEV. 3.55
S-9	TYPE "E" INLET PER FDOT INDEX NO. 232 AND 12" OPEN SUMP PER MDC STANDARDS. WTYPE II SKIMMER PER FDOT INDEX #241 TOP ELEV. 7.50 W. FL. 3.50 E. FL. 3.50 BOTTOM ELEV. 0.00	S-23	57 L.F. OF 10" N12 HDPE STORM PIPE @ 2.00%
S-9a	45 L.F. OF 4" N12 HDPE STORM PIPE @ 2.22%	S-24	4" PVC @ 2.0% MINIMUM
S-10	152 L.F. OF 18" N12 HDPE STORM PIPE @ 0.00% (120 L.F. PERFORATED PIPES)	S-25	8" CLEANOUT TOP EL. 8.85 INV. ELEV. 4.75
S-11	TYPE "E" INLET PER FDOT INDEX NO. 232 AND 12" OPEN SUMP PER MDC STANDARDS. WTYPE II SKIMMER PER FDOT INDEX #241 TOP ELEV. 7.50 N. FL. 3.50 (SKIMMER) E. FL. 3.50 BOTTOM ELEV. 0.00	S-25a	8" CLEANOUT TOP EL. 8.85, (E) INV. ELEV. 3.55
S-12	26 L.F. OF 18" N12 HDPE STORM PIPE @ 1.00%	S-26	8" CLEANOUT TOP EL. 8.85 INV. ELEV. 4.93
		S-27	4" CLEANOUT TOP EL. 8.90
		S-28	4" PVC LANDSCAPE PLANTER DRAIN HEADER PIPE @ 2.0% CONNECT ALL LANDSCAPE PLANTER DRAINS TO HEADER PIPE W/ 4" x 2" TEE. (REFER TO LANDSCAPE DETAILS FOR PLANTER DRAINS)
		S-29	165 L.F. OF 10" N12 HDPE STORM PIPE @ 1.00%
		S-30	8" CLEANOUT TOP EL. 8.95, INV. 3.80
		S-31	8" CLEANOUT TOP EL. 8.85, INV. 4.80
		S-31a	4" CLEANOUT TOP EL. 8.90
		S-32	4" PVC @ 2.0% MINIMUM
		S-33	4" CLEANOUT TOP EL. 8.95, INV. 4.35
		S-34	8" CLEANOUT TOP EL. 8.80, INV. 4.50
		S-35	98 L.F. 10" L.F. OF HDPE STORM PIPE @ 1.0%
		S-35a	8" CLEANOUT TOP EL. 8.25, INV. 3.55

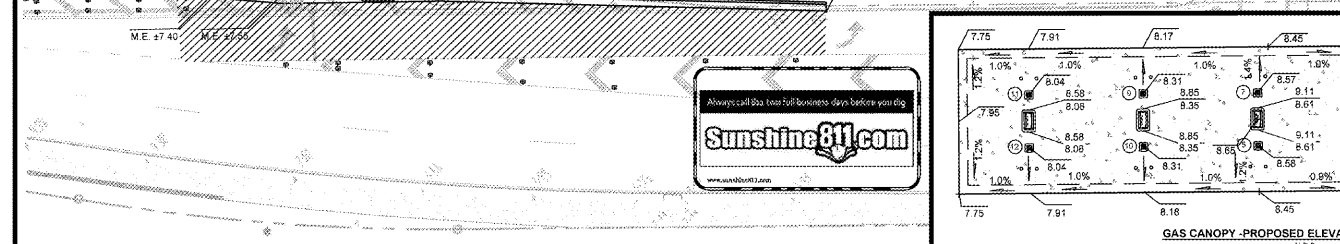
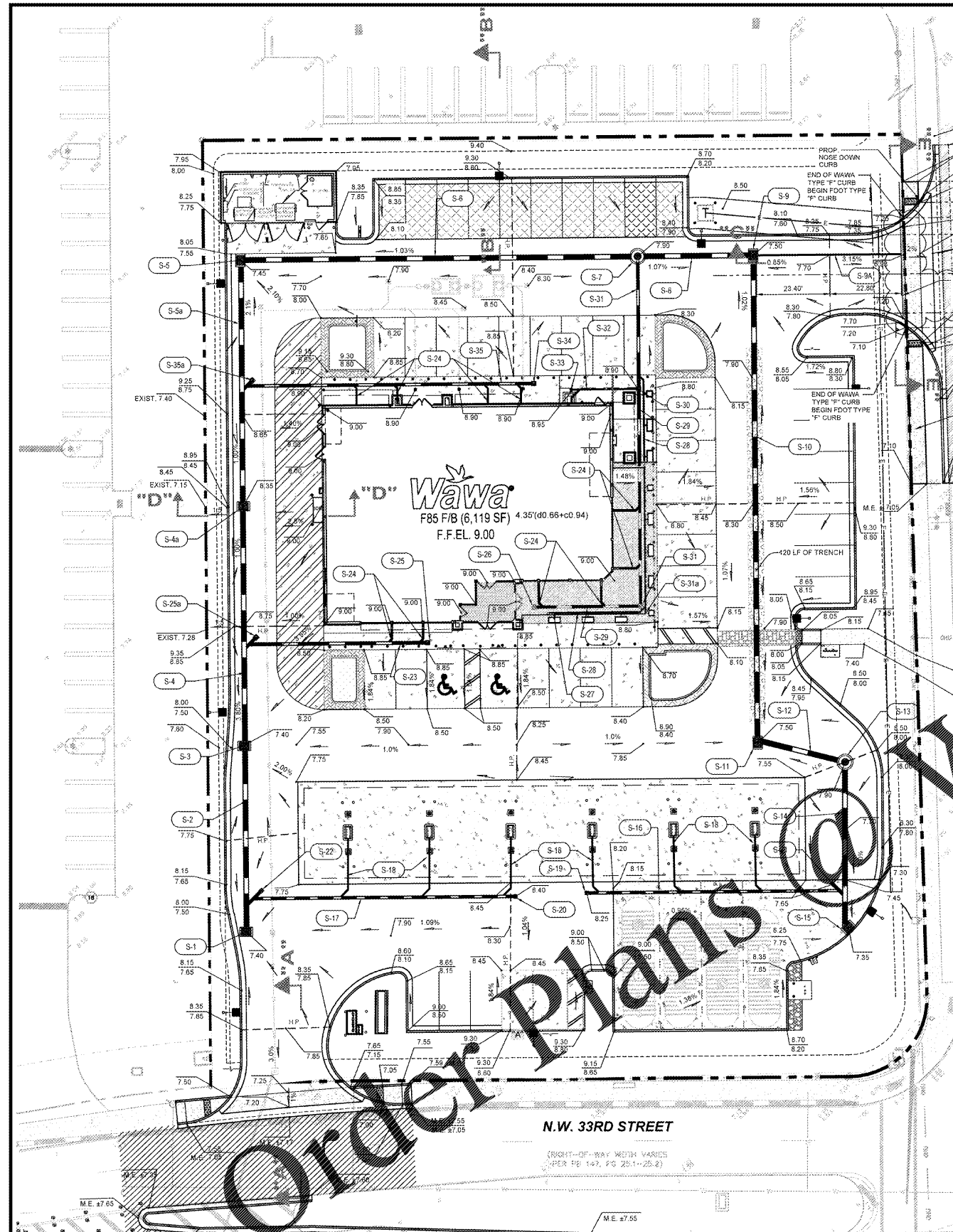
FLOOD LEGEND

1. FLOOD ZONE.	X
2. BASE FLOOD ELEVATION (BFE)	N/A
3. FLOOD INSURANCE RATE MAP (FIRM) PANEL (12086C0287L)	287 OF 1031
	AVERAGE ELEVATION (FT. NGVD)
	7.27
	7.67

- HIGH AND LOW ELEVATIONS BACK OF ALL SIDEWALKS ABUTTING THE PROPERTY.
- HIGH AND LOW ELEVATIONS OF THE CROWN OF ALL ROADS ABUTTING THE PROPERTY.
- FINISH FLOOR ELEVATION REQUIRED IS 7.6 (COR) + 4" 7.50 NGVD MINIMUM.
- SLAB RECESS FOR FREEZE ELEV. 8.67
- PROPOSED FINISHED FLOOR ELEVATION
- ELECTRIC TRANSFORMER PROPOSED ELEVATION
- PROPOSED LOWEST FUEL PUMP ELEVATION
- PROPOSED FUEL TANK VENT. ELEVATION



GAS CANOPY - PROPOSED ELEVATIONS (AT GRADE)
N.T.S.



STORM SEWER SYSTEM PLAN
N.T.S.

Order Plans @ WAWA



GRADING & STORM DRAINAGE PLAN

WAWA
 3300 NW 87TH AVENUE
 MIAMI, FLORIDA

Designed: I.G.
 Drawn: J.C / I.G.
 Checked: J.L.J.
 Job No.: U1207
 Date: OCT / 2017 © 2018

THIS SHEET NOT VALID FOR CONSTRUCTION WITHOUT COMPLETE SET OF PLANS. SEE GENERAL NOTES FOR MASTER LEGEND.

Sheet No. **G.7**