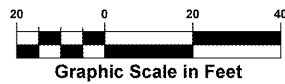
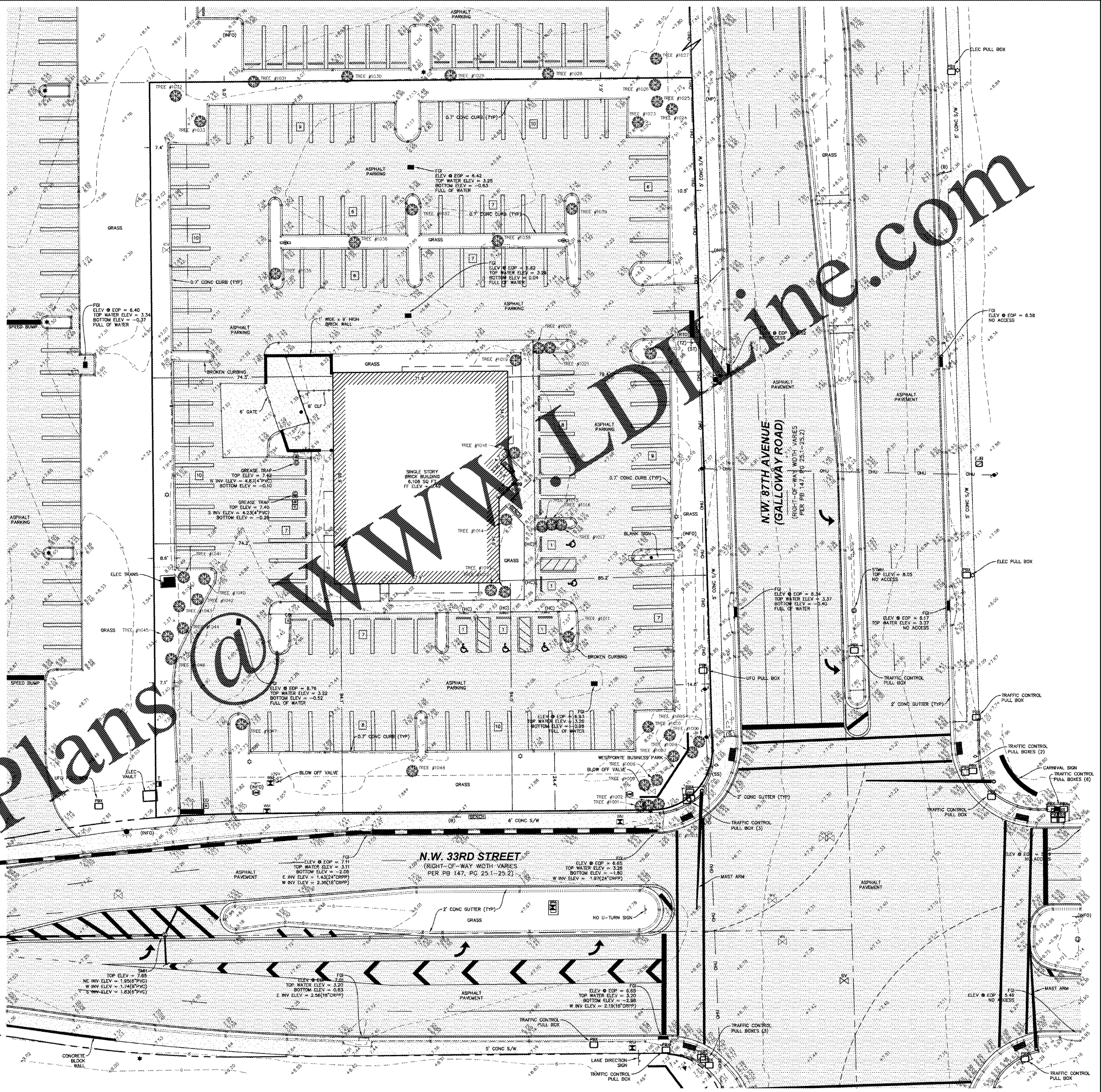


Tree #	DBH (in.)	Common Name	Botanical Name	Height (ft.)	Spread (ft)	Condition	Specimen
1001	4"	Peregrina	<i>Jatropha integerrima</i>	10	8	Poor	
1002	11.5"	Peregrina	<i>Jatropha integerrima</i>	10	8	Poor	
1003	17"	Peregrina	<i>Jatropha integerrima</i>	10	8	Poor	
1004	11.5"	Peregrina	<i>Jatropha integerrima</i>	10	6	Poor	
1005	3.5	Peregrina	<i>Jatropha integerrima</i>	15	8	Fair	
1006	13.5	Washington Fan Palm	<i>Washingtonia robusta</i>	30	8	Fair	
1007	13.5	Washington Fan Palm	<i>Washingtonia robusta</i>	30	8	Fair	
1008	13	Washington Fan Palm	<i>Washingtonia robusta</i>	45	8	Fair	
1009	10.5	Washington Fan Palm	<i>Washingtonia robusta</i>	35	8	Fair	
1010	18.5	Mahogany	<i>Swietenia mahagoni</i>	30	30	Fair	X
1011	14	Mahogany	<i>Swietenia mahagoni</i>	9	4	Poor	
1012	17.5	Cabbage Palm	<i>Sabal palmetto</i>	25	10	Fair	
1013	15	Cabbage Palm	<i>Sabal palmetto</i>	20	10	Good	
1014	3	Solitaire Palm	<i>Phycosperma elegans</i>	20	10	Fair	
1015	14	Bottle Palm	<i>Hyophorbe lagenicaulis</i>	5	6	Fair	
1016	14	Bottle Palm	<i>Hyophorbe lagenicaulis</i>	5	6	Fair	
1017	14	Bottle Palm	<i>Hyophorbe lagenicaulis</i>	4.5	6	Fair	
1018	4.5	Solitaire Palm	<i>Phycosperma elegans</i>	30	8	Fair	
1019	12	Cabbage Palm	<i>Sabal palmetto</i>	20	10	Good	
1020	12	Bottle Palm	<i>Hyophorbe lagenicaulis</i>	4	6	Fair	
1021	14	Bottle Palm	<i>Hyophorbe lagenicaulis</i>	5	6	Fair	
1022	4.5	Pygmy Date Palm	<i>Phoenix roebelinii</i>	5	4	Poor	
1023	14	Mahogany	<i>Swietenia mahagoni</i>	30	30	Fair	
1024	14	Cabbage Palm	<i>Sabal palmetto</i>	20	12	Fair	
1025	17	Cabbage Palm	<i>Sabal palmetto</i>	25	12	Fair	
1026	13	Cabbage Palm	<i>Sabal palmetto</i>	25	12	Fair	
1027	16	Live Oak	<i>Quercus virginiana</i>	35	30	Fair	
1028	14.5	Live Oak	<i>Quercus virginiana</i>	35	40	Fair	
1029	19	Live Oak	<i>Quercus virginiana</i>	25	40	Fair	X
1030	16	Live Oak	<i>Quercus virginiana</i>	25	40	Fair	
1031	16	Live Oak	<i>Quercus virginiana</i>	35	40	Fair	
1032	20.5	Mahogany	<i>Swietenia mahagoni</i>	25	40	Poor	X
1033	15"	Mahogany	<i>Swietenia mahagoni</i>	20	25	Poor	
1035	20	Mahogany	<i>Swietenia mahagoni</i>	40	30	Fair	X
1036	18.5	Mahogany	<i>Swietenia mahagoni</i>	40	30	Fair	X
1037	20	Mahogany	<i>Swietenia mahagoni</i>	40	25	Poor	X
1038	24.5	Mahogany	<i>Swietenia mahagoni</i>	40	30	Fair	X
1039	17.5	Mahogany	<i>Swietenia mahagoni</i>	40	25	Fair	
1040	19.5	Mahogany	<i>Swietenia mahagoni</i>	40	40	Fair	X
1041	8.5"	Trumpet Tree	<i>Tabebuia sp.</i>	15	20	Fair	
1042	13	Cabbage Palm	<i>Sabal palmetto</i>	25	10	Good	
1043	17.5	Cabbage Palm	<i>Sabal palmetto</i>	25	10	Good	
1044	14	Cabbage Palm	<i>Sabal palmetto</i>	25	10	Good	
1045	13	Cabbage Palm	<i>Sabal palmetto</i>	25	10	Good	
1046	13.5	Cabbage Palm	<i>Sabal palmetto</i>	25	10	Good	
1047	12	Bottle Palm	<i>Hyophorbe lagenicaulis</i>	4	6	Fair	
1048	17	Washington Fan Palm	<i>Washingtonia robusta</i>	45	10	Fair	



Graphic Scale in Feet

NOTE:
 THIS SURVEY IS NOT VALID WITHOUT SHEETS 1 THROUGH 3 OF 3.
 TITLE BLOCK ABBREVIATIONS:
 Eng. = ENGINEERING L.B. = LICENSED BUSINESS
 C.O.A. = CERTIFICATE OF AUTHORIZATION Arch. = ARCHITECTURAL
 Landscp. = LANDSCAPE NA = NOT APPLICABLE Lic. = LICENSED
 No. = NUMBER P.O. = POINT OF CORRECTION S. = CURB/BLUES



gph
 www.cphcorp.com
A Full Service A & E Firm
 Architects
 Engineers
 Landscape Architects
 M / E / P
 Planners
 Structural
 Surveyors
 Traffic / Transportation
 Development Coordination

Offices in:
 • Florida
 • Puerto Rico
 • Connecticut
 • Maryland
 • Texas

Field Crew:	E.H.	R.D.B.	Checked by:	R.L.R.	Approved by:	T.J.G.	Date:	01/09/18	Job No.:	U1207	By	Revision
Drawn by:							1/20/18					
Scale:							4"=20'					
Files:							1/23/18					

Survey Prepared by:
CPH, Inc.
 500 West Fulton St.
 Sanford, FL 32771
 Ph: 407.322.5841
 Licenses:
 Eng. C.O.A. No. 3215
 Survey L.B. No. 7143
 Arch. Lic. No. AB260926
 Landscp. Lic. No. LC0000298

BOUNDARY & TOPOGRAPHIC SURVEY
 (ALTA/NSPS LAND TITLE SURVEY)
UNICORP NATIONAL DEVELOPMENTS, INC.
 3300 N.W. 87TH AVENUE
 SECTION 28-TOWNSHIP 63 SOUTH-RANGE 40 EAST
 MIAMI-DADE COUNTY, FLORIDA

Sheet No. **3** of 3