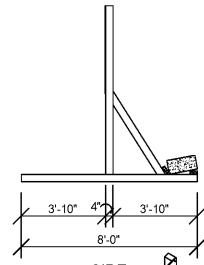
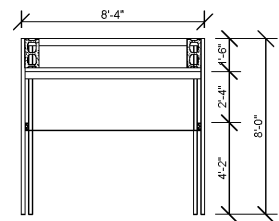


FRONT

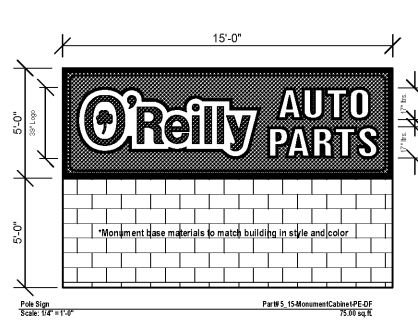
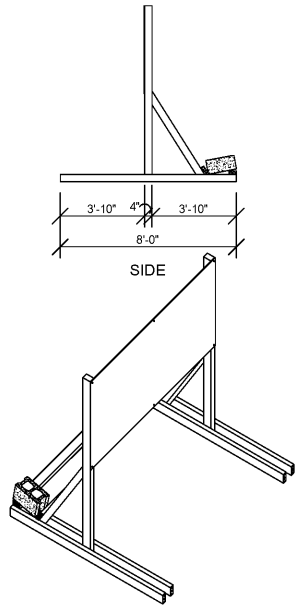


SIDE

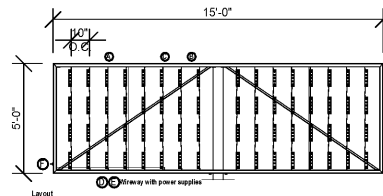


TOP

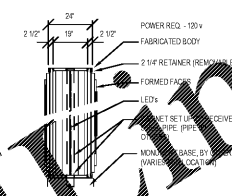
1 COMING SOON
TEMPORARY CONSTRUCTION SIGN
SG1.2 SCALE: 1/4" = 1'-0"



2 GROUND SIGN ELEVATION
SG1.2 SCALE: 1/4" = 1'-0"



- ① 24" deep fabricated cabinet with support structure and 2 1/4" retainers
- ② Steel pipe provided by others, shown for reference only
- ③ GE-Tetra PowerStrip DS White LED's, Part #GEDS71-2 (7100K/14 LED's per module) (7 LED's per side) on GE-Tetra Mounting Rails, Part #GEDSRL08. Rails on 10" centers. 64 total modules.
- ④ GE-Tetra Power Supplies, Part #GEPS24-100U-NA 24VDC/10-277VAC 5000HZ Load capacity: 16 modules per power supply. Total of four power display.
- ⑤ Fabricated aluminum internal power supply wireway.
- ⑥ Disconnect Switch



GENERAL NOTES

A REFER TO PROJECT MANUAL FOR ADDITIONAL REQUIREMENTS.

B CONTACT OWNER'S OR TENANT'S DESIGNATED PROJECT ADMINISTRATOR FOR QUESTIONS OR CLARIFICATIONS.

C PERMANENT SIGNAGE OWNER FURNISHED AND INSTALLED. (REFER TO SCOPE OF WORK SCHEDULE). SIGNAGE GRAPHICS PROVIDED FOR REFERENCE ONLY (N.I.C.) AND CONTRACTOR'S COORDINATION WITH SPECIFIC PROJECT CONSTRUCTION CONDITIONS.

D SITE SIGN ROUGH-IN ELECTRICAL TO BE PROVIDED BY CONTRACTOR.

E REQUIRED GOVERNMENTAL PERMITS FOR PERMANENT TYPE SIGNAGE TO BE PROVIDED BY THE COMPANY PER OWNER'S DIRECTION (N.I.C.).

F "COMING SOON" TEMPORARY CONSTRUCTION SIGN TO BE PROVIDED BY GENERAL CONTRACTOR. APPLIED SIGNAGE GRAPHICS TO BE OWNER FURNISHED AND GENERAL CONTRACTOR INSTALLED. STATE TEMPORARY CONSTRUCTION SIGN ON SITE SO AS TO BE VISIBLE TO PUBLIC FROM RIGHT-OF-WAY.

G UNLESS OTHERWISE INDICATED, SITE POLE SIGN FOUNDATION CONSTRUCTION BY SIGN CONTRACTOR (BY OTHERS - NOT IN CONTRACT) AND SITE MONUMENT SIGN FOUNDATION CONSTRUCTION BY GENERAL CONTRACTOR (BASE BID).

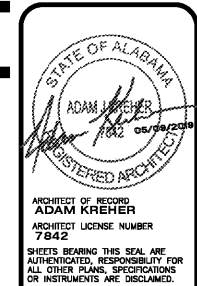
SPECIAL NOTE:
SIGN DESIGN BY OTHERS. REFER TO SIGN CONTRACTOR'S SHOP DRAWINGS FOR ADDITIONAL REQUIREMENTS.

SITE SIGN SCHEDULE

TEMPORARY CONSTRUCTION SIGN:
TYPE: COMING SOON
DETAIL: REFER TO 1/SG1.2

SITE SIGN:
TYPE: MONUMENT (5'H X 15'W X 10' H.)
DETAIL: REFER TO 2/SG1.2

NOTE:
REFER TO SHEET S1.2 FOR SIGN FOUNDATION SYSTEM STRUCTURAL REQUIREMENTS.



ARCHITECT OF RECORD
ADAM KREHER
ARCHITECT LICENSE NUMBER
7842
SHEETS BEARING THIS SEAL ARE AUTHENTICATED. RESPONSIBILITY FOR ALL OTHER PLANS, SPECIFICATIONS OR INSTRUMENTS ARE DISCLAIMED.

ADAM KREHER, ARCHITECT
116 N. 2ND AVENUE
OZARK, MO 65721
P (417) 681-8889
F (417) 581-9002

PROJECT:
NEW O'REILLY AUTO PARTS STORE
11178 COUNTY LINE ROAD
MADISON, AL 35758

SITE SIGNAGE DETAILS



DRAWN BY: NO
CHECKED BY: KR
DATE: 05/10/2019
REVISION:
PROJECT NUMBER: 19098-MS3
SHEET NUMBER: SG1.2

Order Plans @ WWW.LDILINE.COM