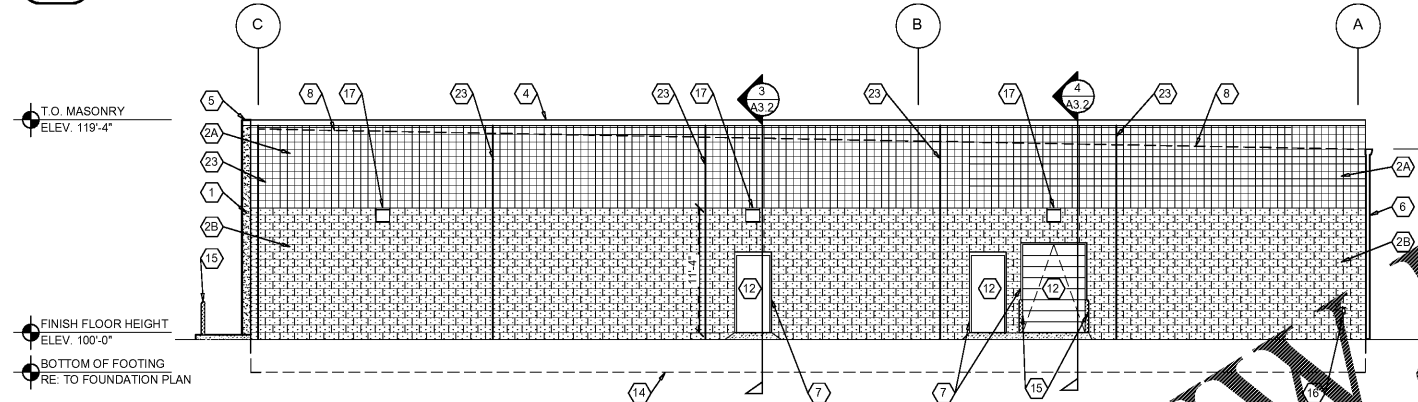


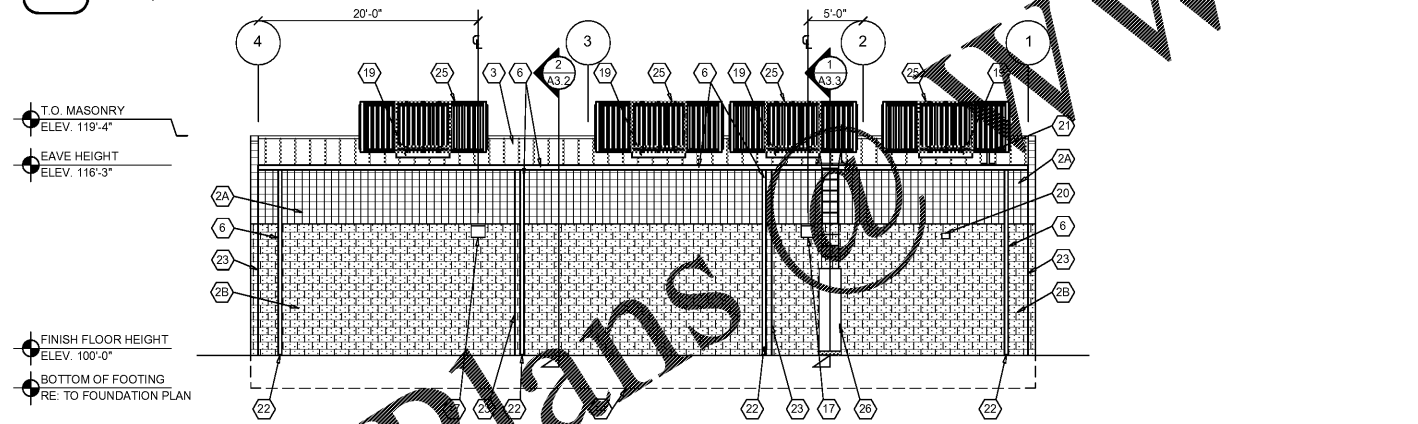
**1 FRONT EXTERIOR ELEVATION**

A2.1 SCALE: 1/8" = 1'-0"



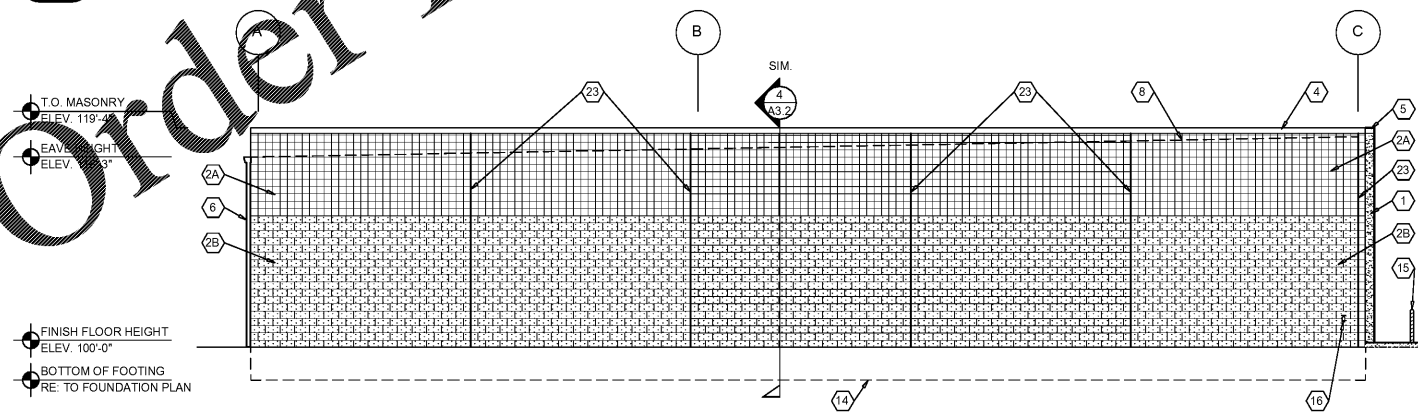
**2 RIGHT EXTERIOR ELEVATION**

A2.1 SCALE: 1/8" = 1'-0"



**3 REAR EXTERIOR ELEVATION**

A2.1 SCALE: 1/8" = 1'-0"



**4 LEFT EXTERIOR ELEVATION**

A2.1 SCALE: 1/8" = 1'-0"

**EXTERIOR FINISH SCHEDULE**

**EXTERIOR INSULATION AND FINISH SYSTEM (EIFS)**

**KEY NOTE NO. 1:**  
MFG: DRYVIT SPECIFIED, EQUAL BY STO OR BASF (NO SUBSTITUTES)  
SERIES: OUTSULATION PLUS MD  
TEXTURE: SANDBLAST  
COLOR: DRYVIT "ORAP01 1030S" STRATOTONE HIGH PERFORMANCE  
COLOR STANDARD: SHERWIN WILLIAMS "POSITIVE RED" SW6871  
(SHER-CRYL) GLOSS

**UNIT MASONRY**

**KEY NOTE NO. 2A:**  
TYPE: CONCRETE MASONRY UNIT (CMU)  
MFG: (REFER TO PROJECT MANUAL)  
SIZE: 8"x8"x16" (NOM.)  
TEXTURE: SMOOTH FACE SINGLE SCORE  
COURSING: RUNNING BOND  
FINISH: FIELD PAINT (ACCENT COLOR)  
COLOR: SHERWIN WILLIAMS "SOFTER TAN" SW6141 (SEMI-GLOSS)  
COATS:  
(1) COAT SW "PREPRITE" BLOCK FILLER B25W25 (NO LESS THAN 8 MILS)  
AND (2) COATS SW "CONFLX XL" SMOOTH ELASTOMERIC A5-400 (NO LESS  
THAN 5.7 MILS EACH COAT) (1) COAT SW "SHER-CRYL HPA SEMI-GLOSS" (NO  
LESS THAN 4 MILS)

COATS (COLD WEATHER APPLICATIONS - CONDITIONS BELOW 35° F):  
(1) COAT SW "LOXON BLOCK SURFACER" (NO LESS THAN 8 MILS) AND (2)  
COATS SW "ULTRACRETE" SOLVENT BORNE SMOOTH B46 (NO LESS THAN 8  
MILS EACH COAT OR 16 MILS TOTAL)

**KEY NOTE NO. 2B:**  
TYPE: CONCRETE MASONRY UNIT (CMU)  
MFG: (REFER TO PROJECT MANUAL)  
SIZE: 8"x8"x16" (NOM.)  
TEXTURE: SPLIT FACE  
COURSING: RUNNING BOND  
FINISH: FIELD PAINT (ACCENT COLOR)  
COLOR: SHERWIN WILLIAMS "LATTE" SW6101 (SEMI-GLOSS)  
COATS:  
(1) COAT SW "PREPRITE" BLOCK FILLER B25W25 (NO LESS THAN 8 MILS)  
AND (2) COATS SW "CONFLX XL" SMOOTH ELASTOMERIC A5-400 (NO LESS  
THAN 5.7 MILS EACH COAT) (1) COAT SW "SHER-CRYL HPA SEMI-GLOSS" (NO  
LESS THAN 4 MILS)

COATS (COLD WEATHER APPLICATIONS - CONDITIONS BELOW 35° F):  
(1) COAT SW "LOXON BLOCK SURFACER" (NO LESS THAN 8 MILS) AND (2)  
COATS SW "ULTRACRETE" SOLVENT BORNE SMOOTH B46 (NO LESS THAN 8  
MILS EACH COAT OR 16 MILS TOTAL)

**FLASHING AND SHEET METAL**

**KEY NOTE NO. 3:**  
TYPE: STANDING SEAM ROOFING SYSTEM  
MFG: (REFER TO PRE-ENGINEERED METAL BUILDING SHOP DRAWINGS)  
COLOR: GALVALUME

**KEY NOTE NO. 4:**  
TYPE: CAP FLASHING AT MASONRY  
MFG: (REFER TO PRE-ENGINEERED METAL BUILDING SHOP DRAWINGS)  
FINISH: PREFINISHED  
COLOR: EQUAL TO BUTLER BUILDING "COOL BIRCH WHITE"

**KEY NOTE NO. 5:**  
TYPE: CAP FLASHING AT EXTERIOR INSULATION FINISH SYSTEM (EIFS)  
MFG: (REFER TO PRE-ENGINEERED METAL BUILDING SHOP DRAWINGS)  
FINISH: FACTORY PRIMED AND FIELD PAINT  
COLOR: SHERWIN WILLIAMS "POSITIVE RED" SW6871 (SHER-CRYL) GLOSS  
WITH SHERWIN WILLIAMS THREE COMPONENT (B65T105 / B65V105 /  
B65C105) CLEAR URETHANE

**KEY NOTE NO. 6:**  
TYPE: GUTTER AND DOWNSPOUTS  
MFG: (REFER TO PRE-ENGINEERED METAL BUILDING SHOP DRAWINGS)  
FINISH: PREFINISHED  
COLOR: EQUAL TO BUTLER BUILDING "COOL BIRCH WHITE"

**DOORS AND WINDOWS**

**KEY NOTE NO. 12:**  
TYPE: STEEL DOORS AND FRAMES (DOORS NO. 2 AND 7)  
MFG: (OWNER FURNISHED / CONTRACTOR INSTALLED)  
FINISH: FACTORY PRIMED AND FIELD PAINTED  
COLOR: SHERWIN WILLIAMS (MATCH ADJACENT MASONRY COLOR)  
(SEMI-GLOSS)

**KEY NOTE NO. 13:**  
TYPE: STEEL DOORS AND FRAMES (DOORS NO. 3)  
MFG: (REFER PROJECT MANUAL)  
FINISH: FACTORY PRIMED AND FIELD PAINTED  
COLOR: SHERWIN WILLIAMS (MATCH ADJACENT MASONRY COLOR)  
(SEMI-GLOSS)

**KEY NOTE NO. 14:**  
TYPE: (REFER TO WINDOW SCHEDULE)  
MFG: EFCO, KAWNEER, OR OLD CASTLE (VISTA WALL), (NO SUBSTITUTES)  
COLOR: EFCO "IVY", KAWNEER "DARK IVY", VISTA WALL "INTERSTATE  
GREEN"

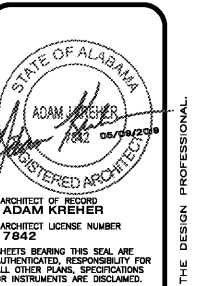
**PAINTING**  
**KEY NOTE NO. 15:**  
TYPE: STEEL BOLLARDS (REFER TO CIVIL DRAWINGS)  
FINISH: FIELD PRIMED AND PAINTED  
COLOR: SHERWIN WILLIAMS "HUNT CLUB" SW6468 (SEMI-GLOSS)

**GENERAL NOTES**

- A REFER TO PROJECT MANUAL FOR ADDITIONAL REQUIREMENTS.
- B REFER TO CIVIL DRAWINGS FOR ADDITIONAL REQUIREMENTS.
- C REFER TO PLUMBING, MECHANICAL, AND ELECTRICAL DRAWINGS FOR SYSTEM TYPES AND ADDITIONAL REQUIREMENTS.
- D REFER TO EXTERIOR FINISH SCHEDULE FOR MATERIAL TYPES.
- E REFER TO PRE-ENGINEERED METAL BUILDING SHOP DRAWINGS FOR ADDITIONAL REQUIREMENTS.
- F REFER TO SCOPE OF WORK SCHEDULE FOR ADDITIONAL REQUIREMENTS.

**KEY NOTES**

- 1 EXTERIOR INSULATION AND FINISH SYSTEM (EIFS).
- 2A CONCRETE MASONRY UNIT (CMU) EXTERIOR WALL CONSTRUCTION (ACCENT COLOR) REFER TO PLANS, SECTIONS, AND DETAILS FOR ADDITIONAL REQUIREMENTS.
- 2B CONCRETE MASONRY UNIT (CMU) EXTERIOR WALL CONSTRUCTION (FIELD COLOR) REFER TO PLANS, SECTIONS, AND DETAILS FOR ADDITIONAL REQUIREMENTS.
- 3 PRE-ENGINEERED METAL BUILDING SHEET METAL ROOFING SYSTEM.
- 4 PRE-ENGINEERED METAL BUILDING SHEET METAL FLASHING (AT MASONRY)
- 5 PRE-ENGINEERED METAL BUILDING SHEET METAL FLASHING (AT EIFS)
- 6 PRE-ENGINEERED METAL BUILDING SHEET METAL GUTTER AND DOWNSPOUT SYSTEM.
- 7 CONCRETE MASONRY UNIT (CMU) CORNER FINISHED JAMB UNIT.
- 8 LINE OF ROOF BEYOND WITH 1/4" - 12" SLOPE MINIMUM.
- 9 SURFACE MOUNTED SIGN OWNER FURNISHED AND INSTALLED. PROVIDE BACKING FOR MOUNTING AND ROUGH-IN ELECTRICAL COORDINATE REQUIREMENTS WITH OWNER. REFER TO SHEET SG2.1.
- 10 BUILDING ADDRESS NUMBERS IN 6" HIGH HELVETICA WHITE VINYL ADHERED TO EXTERIOR FACE OF GLAZING.
- 11 (NOT USED).
- 12 EXTERIOR DOOR AND FRAME SYSTEM. REFER TO FLOOR PLAN AND DOOR SCHEDULE FOR TYPES.
- 13 EXTERIOR WINDOW SYSTEM. REFER TO FLOOR PLAN AND WINDOW SCHEDULE FOR TYPES.
- 14 APPROXIMATE LINE OF FOUNDATION. REFER TO STRUCTURAL DRAWINGS.
- 15 STEEL BOLLARDS. REFER TO CIVIL AND STRUCTURAL DRAWINGS.
- 16 HOSE BIB. REFER TO PLUMBING DRAWINGS.
- 17 LIGHT FIXTURE. REFER TO ELECTRICAL DRAWINGS.
- 18 (NOT USED).
- 19 MECHANICAL ROOF TOP UNIT. REFER TO MECHANICAL DRAWINGS.
- 20 MECHANICAL WALL PENETRATIONS. REFER TO MECHANICAL DRAWINGS. PROVIDE FRAMING, FLASHING, AND SEALANT AS REQUIRED. INSTALL RESTROOM EXHAUST FANS 12" MINIMUM ABOVE INTERIOR CEILING FRAMING.
- 21 PLUMBING ROOF VENT. REFER TO PLUMBING DRAWINGS AND DETAIL 11/A4.2.
- 22 DOWNSPOUT TO DISCHARGE AT PARKING LOT VIA SIDEWALK FLUTE. PROVIDE COVER PLATE OVER FLUTE.
- 23 MASONRY CONTROL JOINT. REFER TO STRUCTURAL DRAWINGS. PROVIDE SEALANT OVER 1/2" DIAMETER FOAM BACKER ROD.
- 24 RUSTICATION JOINT. REFER TO DETAIL 6/A3.2.
- 25 MECHANICAL SCREEN. COLOR TO MATCH MAIN BUILDING COLOR. SEE SPECIFICATIONS FOR MECHANICAL SCREEN SPECS.
- 26 PRE-FABRICATED ALUMINUM ROOF ACCESS LADDER SYSTEM (PAINT) WITH INTEGRATED LANDING AT TOP. MIN 3'-0". PROVIDE SECURITY PANEL WITH SIDE GUARDS. LADDER TO COMPLY WITH "OSHA" AND "ANSI" REQUIREMENTS. ALL CONNECTIONS TO BE FACTORY WELDED AND FIELD ANCHORED TO WALL AND CONCRETE SLAB CONSTRUCTION PER MANUFACTURER'S RECOMMENDATIONS. TREADS 12" O.C. MAX. WITH 300 LBS MINIMUM DESIGN LOAD. LADDER TO BE 1'-6" MINIMUM CLEAR WIDTH BETWEEN VERTICAL SIDE RAILS. PROVIDE 7" MINIMUM CLEARANCE BETWEEN INSIDE FACE OF LADDER AND EXTERIOR WALL ASSEMBLY. SUBMIT SHOP DRAWINGS FOR REVIEW AND APPROVAL.



ADAM KREHER, ARCHITECT  
116 N. 2ND AVENUE  
OZARK, MO 65721  
P (417) 581-8889  
F (417) 581-9002

PROJECT:  
NEW O'REILLY AUTO PARTS STORE  
11178 COUNTY LINE ROAD  
MADISON, AL 35758

**O'Reilly AUTO PARTS**  
CORPORATE OFFICES  
333 SOUTH PATTERSON  
SPRINGFIELD, MISSOURI 65802  
(417) 882-2674 TELEPHONE

DRAWN BY: NO  
CHECKED BY: KR  
DATE: 05/10/2019  
REVISION:  
PROJECT NUMBER: 19098-MS3  
SHEET NUMBER: A2.1

Order Plans @ www.LDOnline.com