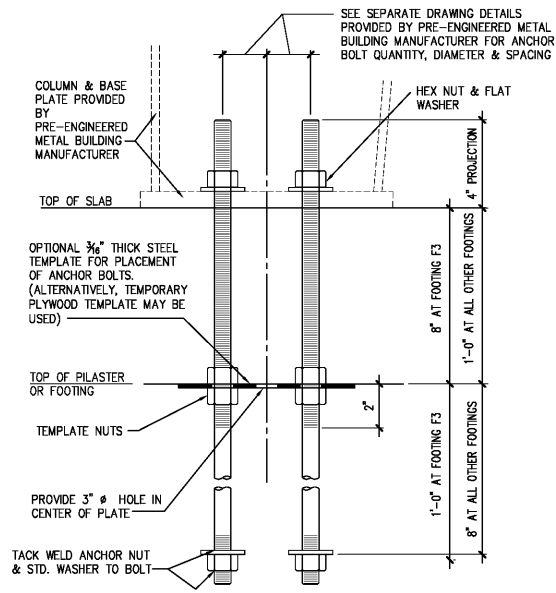


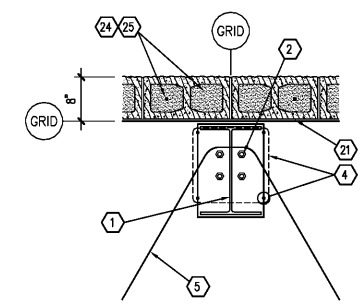
KEYNOTES

- 1 PRE-ENGINEERED METAL BUILDING STRUCTURAL SYSTEM. SEE P.E.M.B. SHOP DRAWINGS FOR ADDITIONAL INFORMATION.
- 2 ANCHOR BOLTS. REFER TO FOUNDATION SCHEDULE AND PRE-ENGINEERED METAL BUILDING DRAWINGS FOR SIZE, QUANTITY AND PLAN LOCATION. SEE 1/S3.2 FOR TYPICAL SHOP FABRICATED ANCHOR ASSEMBLY.
- 3 INTERIOR CONCRETE SLAB SEE FOUNDATION PLAN.
- 4 SEE DETAIL 11/S3.1 FOR VERTICAL ANCHOR BOLT CONFINEMENT REINFORCEMENT
- 5 #5 SLAB HARPIN - SEE DETAIL 7/S3.1
- 6 SEE FOUNDATION SCHEDULE FOR PILASTER REINFORCEMENT.
- 7 #3x5'-0" DOWEL @ 36" O.C. FIELD BEND AS SHOWN 24"
- 8 #4 CONTINUOUS
- 9 #3 DOWELS @ 48" O.C.
- 10 #3 STIRRUPS @ 48" O.C.
- 11 (3) #4'S CONTINUOUS TOP & BOTTOM
- 12 EXTERIOR CONCRETE SLAB OR SIDEWALK SEE FOUNDATION PLAN.
- 13 AT EXTERIOR DOOR LOCATIONS, ALL 6" DEEP HOLES FOR #4x1'-6" DOWELS @ 24" O.C. - APPLY ADHESIVE AND STEEL DOWELS. SEE ADHESIVE SYSTEM NOTES SHEET S1 FOR ADHESIVE ANCHOR INSTALLATION
- 14 #2 INSULATION JOINT WITH ASPHALTIC FILLER & SEALANT
- 15 CONTINUOUS FOOTING REINFORCEMENT TO RUN THROUGH COLUMN FOUNDATIONS. SEE SECTION 1/S3.1 FOR REINFORCEMENT INFORMATION.
- 16 COLUMN FOOTING REINFORCEMENT SEE FOUNDATION SCHEDULE.
- 17 RELATING STRUCTURAL FRAMING SECTION FOR METAL STUD SIZE, GAUGE, SPACING AND ATTACHMENT REQUIREMENTS. REFER TO ARCHITECTURAL FINISHES AND ADDITIONAL REQUIREMENTS. PROVIDE #2 ANCHOR BOLTS @ 48" O.C. AND WITHIN 6" OF ENDS OF WALLS (7" EMBEDMENT & 2" HOOK)
- 18 PAVING, SEE SITE DEVELOPMENT DRAWINGS FOR ADDITIONAL INFORMATION.
- 19 SEE GRADING PLAN FOR FINISHED GRADES.
- 20 STEEL BOLLARD SEE SITE PLAN.
- 21 #6 ISOLATION JOINT WITH ASPHALTIC FILLER & SEALANT
- 22 (3) #3 TIES @ 12" O.C.
- 23 #3 TIES @ 12" O.C. (PROVIDE 2 TIES MINIMUM)
- 24 8" (NOM) SPLIT FACE OR SMOOTH FACE CMU. REFER TO CMU WALL NOTES ON SHEET S1 FOR WALL VERTICAL AND HORIZONTAL REINFORCEMENT.
- 25 HOOKED DOWEL PROJECTING INTO MASONRY WALL. MATCH SIZE AND SPACING OF WALL REINFORCEMENT. SEE STRUCTURAL NOTES SHEET S1.
- 26 WALL FINISH, SEE ARCHITECTURAL
- 27 4" TALL SPLIT FACE OR SMOOTH FACE CMU.
- 28 FIRST COURSE TO BE CONTINUOUS 8" (NOM) SPLIT FACE OR SMOOTH FACE BOND BEAM W/ (1) #5 CONTINUOUS

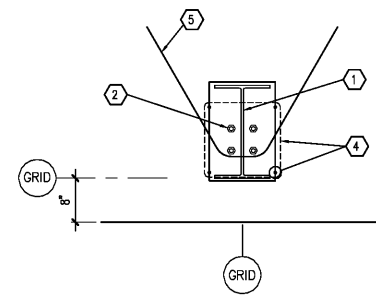


NOTE: ANCHOR BOLT ASSEMBLY TO BE PLACED IN FORM PRIOR TO POURING CONCRETE. BOLT MATERIAL MAY BE F1554 GR. 36, OR CONTINUOUSLY THREADED A36 ROD. ALL ANCHOR BOLTS SHALL BE CLEAN AND FREE OF ALL OIL, GREASE, ICE, ETC.

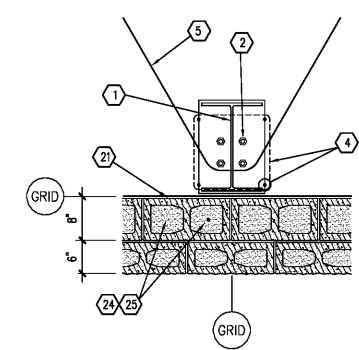
1 ANCHOR ASSEMBLY
S3.2 SCALE: NONE



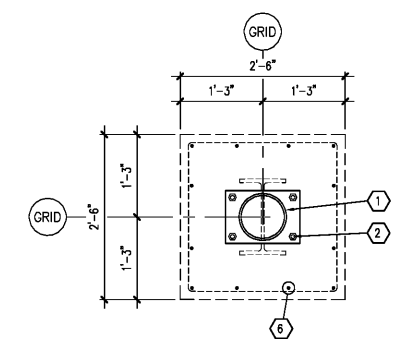
2 DETAIL
S3.2 SCALE: 3/4" = 1'-0"



3 DETAIL
S3.2 SCALE: 3/4" = 1'-0"

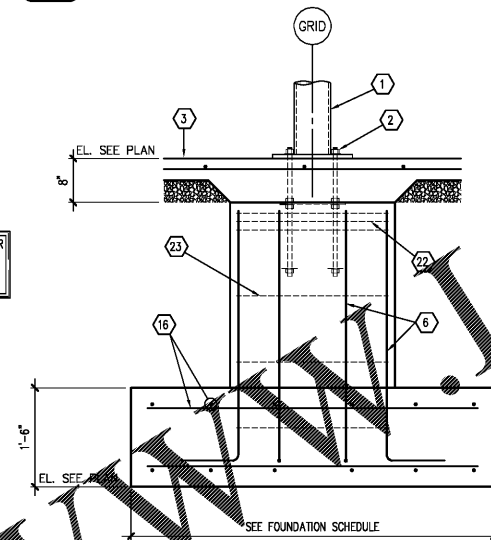


4 DETAIL
S3.2 SCALE: 3/4" = 1'-0"

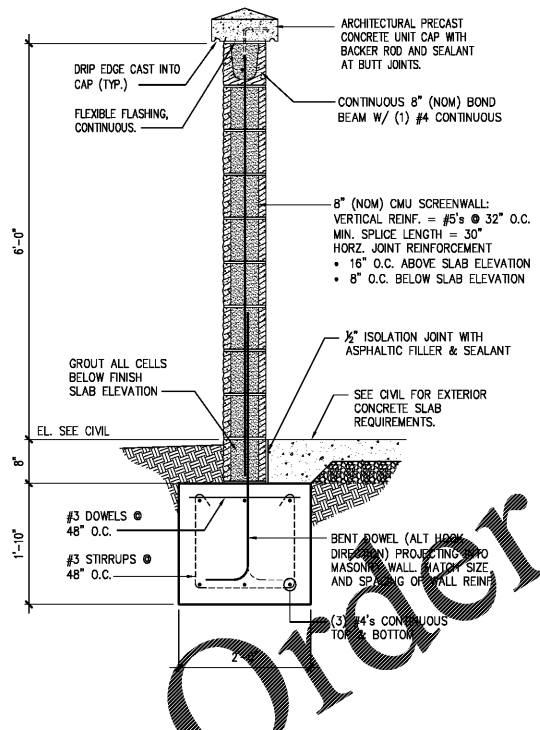


5 DETAIL
S3.2 SCALE: 3/4" = 1'-0"

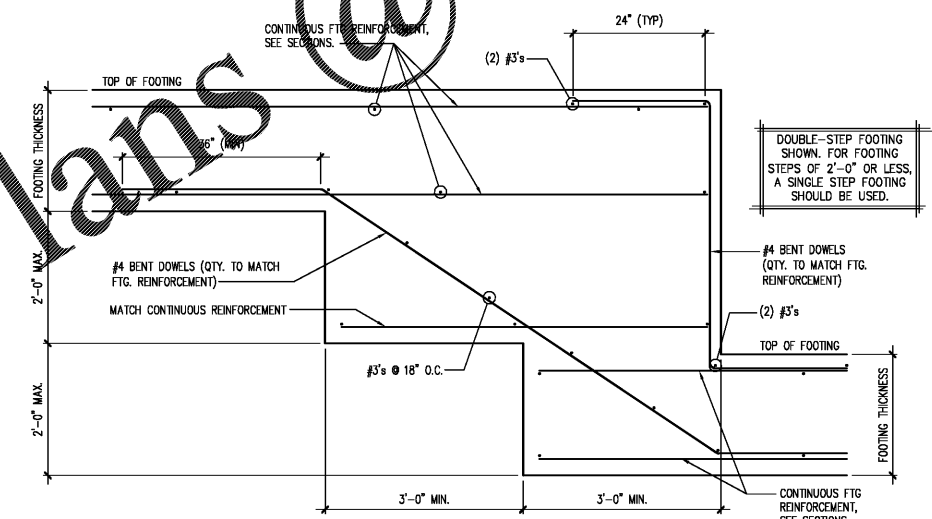
REFER TO PEMB SUPPLIER FOR COLUMN SHAPE, SIZE, AND ORIENTATION AT THIS LOCATION



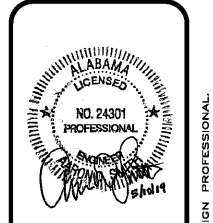
6 SECTION
S3.2 SCALE: 3/4" = 1'-0"



7 SCREEN WALL
S3.2 SCALE: 3/4" = 1'-0"



8 TYPICAL STEPPED FOOTING
S3.2 SCALE: NONE (IF REQUIRED BY FIELD CONDITIONS)



JS Smith Consulting Engineers
Alabama State Certificate of Authorization CA-2283-E
Aaron D. Smith P.E. 24301
P.O. Box 8102 - JOPLIN, MISSOURI 64802
PHONE: 417-624-0444 FAX: 417-624-0430
1801 W 32nd St. Bigg B. Ste. 104 - JOPLIN, MISSOURI 64802
PHONE: 417-624-0444 FAX: 417-624-0430

PROJECT:
NEW O'REILLY AUTO PARTS STORE
11178 COUNTY LINE ROAD
MADISON, AL 35758

O'Reilly AUTO PARTS
CORPORATE OFFICES
283 SOUTH PATTERSON
SPRINGFIELD, MISSOURI 65802
(417) 862-2674 TELEPHONE

DRAWN BY: **MW** CHECKED BY: **AS**
DATE: **05/10/2019**
REVISION:
PROJECT NUMBER:
19098-MS3
SHEET NUMBER

S3.2

© COPYRIGHT 2019 - DESIGNS, DRAWINGS AND SPECIFICATIONS ARE INSTRUMENTS OF SERVICE AND ARE THE PROPERTY OF THE DESIGN PROFESSIONAL. REPRODUCTION PROHIBITED WITHOUT THE EXPRESSED WRITTEN CONSENT OF THE DESIGN PROFESSIONAL.