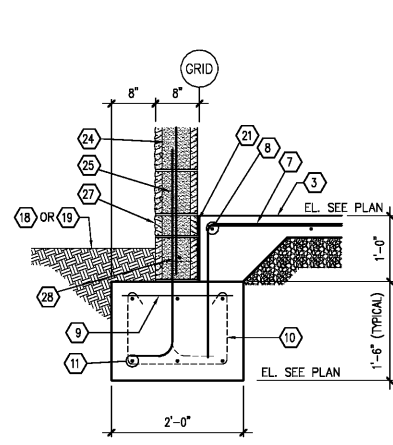
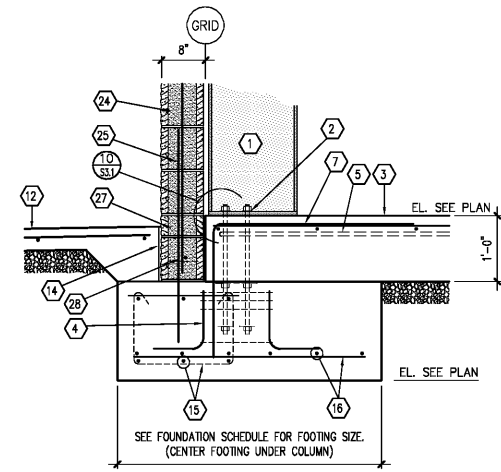


KEYNOTES

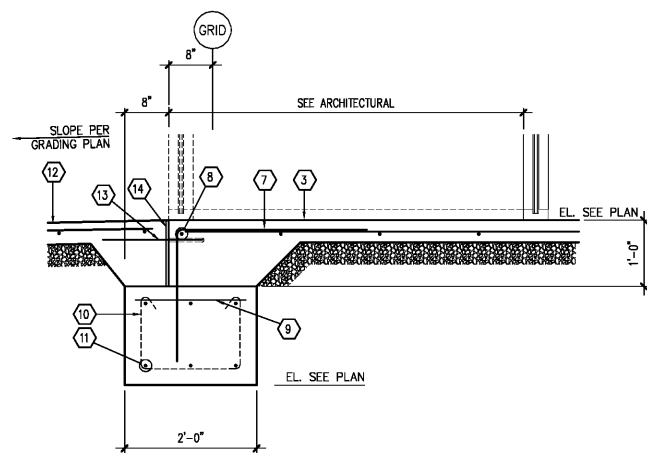
- 1 PRE-ENGINEERED METAL BUILDING STRUCTURAL SYSTEM. SEE P.E.M.B. SHOP DRAWINGS FOR ADDITIONAL INFORMATION.
- 2 ANCHOR BOLTS. REFER TO FOUNDATION SCHEDULE AND PRE-ENGINEERED METAL BUILDING DRAWINGS FOR SIZE, QUANTITY AND PLAN LOCATION. SEE 1/S3.2 FOR TYPICAL SHOP FABRICATED ANCHOR ASSEMBLY.
- 3 INTERIOR CONCRETE SLAB SEE FOUNDATION PLAN.
- 4 SEE DETAIL 11/S3.1 FOR VERTICAL ANCHOR BOLT CONFINEMENT REINFORCEMENT
- 5 #5 SLAB HARPIN - SEE DETAIL 7/S3.1
- 6 SEE FOUNDATION SCHEDULE FOR PILASTER REINFORCEMENT.
- 7 #3x5'-0" DOWEL @ 36" O.C. FIELD BEND AS SHOWN 24"
- 8 #4 CONTINUOUS
- 9 #3 DOWELS @ 48" O.C.
- 10 #3 STIRRUPS @ 48" O.C.
- 11 (3) #4'S CONTINUOUS TOP & BOTTOM
- 12 EXTERIOR CONCRETE SLAB OR SIDEWALK SEE FOUNDATION PLAN.
- 13 AT EXTERIOR DOOR LOCATIONS, ALL 6" DEEP HOLES FOR #4x1'-6" DOWELS @ 24" O.C. - APPLY ADHESIVE AND STEEL DOWELS. SEE ADHESIVE SYSTEM NOTES SHEET S1 FOR ADHESIVE ANCHOR INSTALLATION
- 14 #6 ISOLATION JOINT WITH ASPHALTIC FILLER & SEALANT
- 15 CONTINUOUS FOOTING REINFORCEMENT TO RUN THROUGH COLUMN FOUNDATIONS. SEE SECTION 1/S3.1 FOR REINFORCEMENT INFORMATION.
- 16 COLUMN FOOTING REINFORCEMENT SEE FOUNDATION SCHEDULE.
- 17 CORRELATING STRUCTURAL FRAMING SECTION FOR METAL STUD SIZE, GAUGE, SPACING, AND ATTACHMENT REQUIREMENTS. REFER TO ARCHITECTURAL FOR FINISHES AND ADDITIONAL REQUIREMENTS. PROVIDE 1/2" ANCHOR BOLTS @ 48" O.C. AND WITHIN 6" OF ENDS OF WALLS (7" EMBEDMENT & 2" HOOK)
- 18 PAVING, SEE SITE DEVELOPMENT DRAWINGS FOR ADDITIONAL INFORMATION.
- 19 SEE GRADING PLAN FOR FINISHED GRADES.
- 20 STEEL BOLLARD SEE SITE PLAN.
- 21 #6" ISOLATION JOINT WITH ASPHALTIC FILLER & SEALANT
- 22 (3) #3 TIES @ 12" O.C.
- 23 #3 TIES @ 12" O.C. (PROVIDE 2 TIES MINIMUM)
- 24 8" (NOM) SPLIT FACE OR SMOOTH FACE CMU. REFER TO CMU WALL NOTES ON SHEET S1 FOR WALL VERTICAL AND HORIZONTAL REINFORCEMENT.
- 25 HOOKED DOWEL PROJECTING INTO MASONRY WALL. MATCH SIZE AND SPACING OF WALL REINFORCEMENT. SEE STRUCTURAL NOTES SHEET S1.
- 26 WALL FINISH, SEE ARCHITECTURAL
- 27 4" TALL SPLIT FACE OR SMOOTH FACE CMU.
- 28 FIRST COURSE TO BE CONTINUOUS 8" (NOM) SPLIT FACE OR SMOOTH FACE BOND BEAM W/ (1) #5 CONTINUOUS



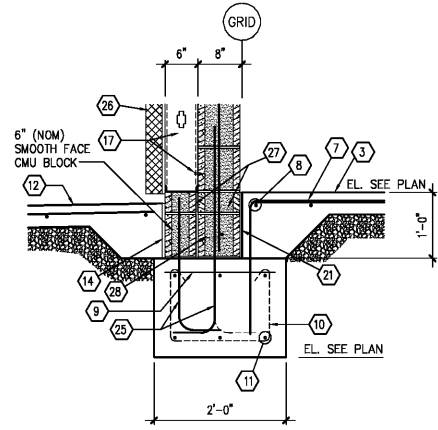
1 SECTION
S3.1 SCALE: 3/4" = 1'-0"



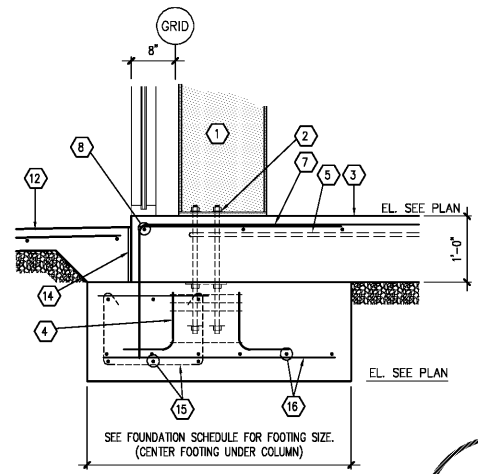
2 SECTION
S3.1 SCALE: 3/4" = 1'-0"



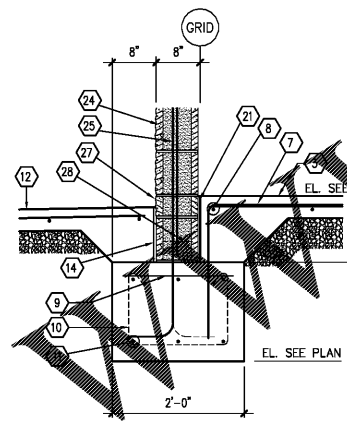
3 SECTION
S3.1 SCALE: 3/4" = 1'-0"



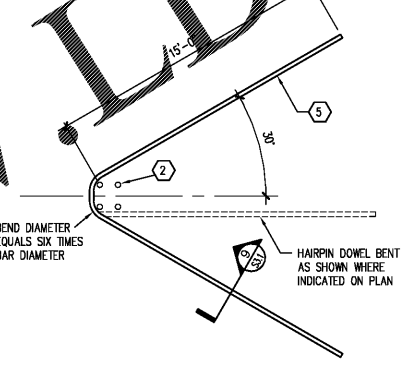
4 SECTION
S3.1 SCALE: 3/4" = 1'-0"



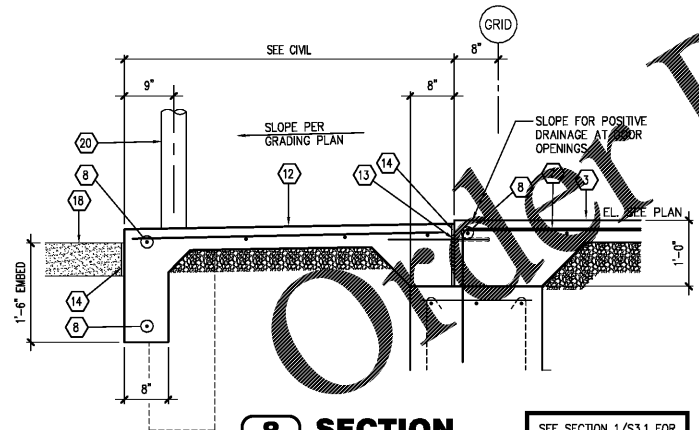
5 SECTION
S3.1 SCALE: 3/4" = 1'-0"



6 SECTION
S3.1 SCALE: 3/4" = 1'-0"

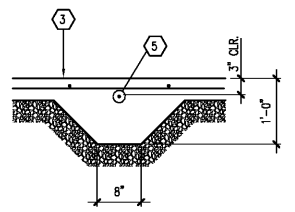


7 TYPICAL HAIRPIN DETAIL
S3.1 SCALE: NONE

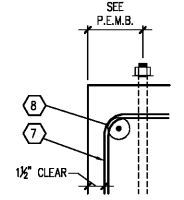


8 SECTION
S3.1 SCALE: 3/4" = 1'-0"

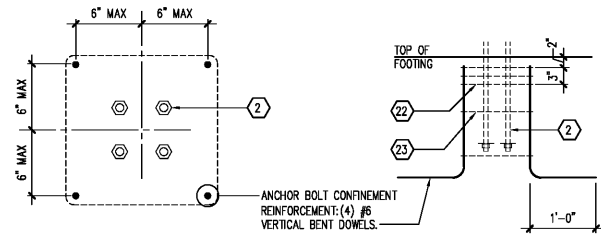
SEE SECTION 1/S3.1 FOR TYPICAL FOOTING AND REINFORCEMENT



9 SECTION
S3.1 SCALE: 3/4" = 1'-0"



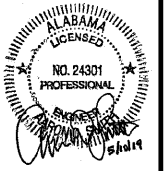
10 DETAIL
S3.1 SCALE: 1 1/8" = 1'-0"



11 SECTION
S3.1 SCALE: VARIES

Order Plans @

www.JSDilining.com



JS Smith Consulting Engineers
Alabama State Certificate of Authorization CA-2283-E
Aaron D. Smith P.E. 24301
P.O. Box 8102 - JOPLIN, MISSOURI 64804
PHONE: 417-624-0444 FAX: 417-624-0430
1801 W 32nd St. Bigg B. Ste. 104 - JOPLIN, MISSOURI 64804

PROJECT:
NEW O'REILLY AUTO PARTS STORE
11178 COUNTY LINE ROAD
MADISON, AL 35758

O'Reilly AUTO PARTS
CORPORATE OFFICES
233 SOUTH PATTERSON
SPRINGFIELD, MISSOURI 65802
(417) 862-2674 TELEPHONE

DRAWN BY: **MW** CHECKED BY: **AS**
DATE: **05/10/2019**
REVISION:
PROJECT NUMBER:
19098-MS3
SHEET NUMBER

S3.1

REPRODUCTION PROHIBITED WITHOUT THE EXPRESSED WRITTEN CONSENT OF THE DESIGN PROFESSIONAL. © COPYRIGHT 2019 - DESIGNS, DRAWINGS AND SPECIFICATIONS ARE INSTRUMENTS OF SERVICE AND ARE THE PROPERTY OF THE DESIGN PROFESSIONAL.