

4" THICK CONCRETE SLAB REINFORCED W/ #3'S @ 18" O.C. EACH WAY (PLACED AT MID-HEIGHT OF SLAB) OVER POLYETHYLENE VAPOR RETARDER OVER COMPACTED SUB-BASE MATERIAL (AS DIRECTED BY THE GEOTECHNICAL REPORT OR ONSITE GEOTECHNICAL ENGINEER) OVER PROPERLY PREPARED SUBGRADE. FINISH FLOOR EL. = 100'-0" (USGS EQUIVALENT = 675.20'). COORDINATE INSTALLATION OF UNDER SLAB MECHANICAL, ELECTRICAL AND PLUMBING SYSTEMS WITH MECHANICAL DRAWINGS.

WHEN TRASH ENCLOSURE SCREEN WALL IS MASONRY CONSTRUCTION SEE SECTION 7/53.2 FOR WALL AND FOUNDATION DETAILING REQUIREMENTS. REFER TO CIVIL DRAWINGS FOR PLAN LOCATION AND ALL OTHER CONSTRUCTION REQUIREMENTS.

FOUNDATION PLAN
SCALE: 1/8" = 1'-0"



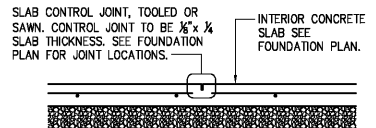
KEYNOTES

- 1 SLAB HAIRPIN. SEE DETAIL 7/53.1
- 2 PROVIDE #4x4'-0" DOWEL ANGLE DOWEL AT SLAB INSIDE CORNERS
- 3 CONTROL OR CONSTRUCTION JOINT SEE DETAILS 1 & 2/S2
- 4 SIDEWALK: PROVIDE 4" THICK CONCRETE REINFORCED W/ #3'S @ 18" O.C. EACH WAY (PLACED AT MID-HEIGHT OF SLAB) OVER COMPACTED SUB-BASE MATERIAL (AS DIRECTED BY THE GEOTECHNICAL REPORT OR ONSITE GEOTECHNICAL ENGINEER) PROPERLY PREPARED SUBGRADE. SEE CIVIL DRAWINGS FOR JOINT REQUIREMENTS, EXTENTS OF FLATWORK, AND TOP OF CONCRETE SPOT ELEVATIONS.
- 5 STEEL BOLLARD: SEE SITE DEVELOPMENT PLANS AND DETAILS. (WHERE APPLICABLE, ALIGN WITH CENTERLINE OF STOREFRONT MULLIONS AND JAMBS OF OVERHEAD DOOR.)
- 6 4"x4" (MIN.) DOORPAD: PROVIDE 4" THICK CONCRETE REINFORCED W/ #3'S @ 18" O.C. EACH WAY (PLACED AT MID-HEIGHT OF SLAB) OVER COMPACTED SUB-BASE MATERIAL (AS DIRECTED BY THE GEOTECHNICAL REPORT OR ONSITE GEOTECHNICAL ENGINEER) ON PROPERLY PREPARED SUBGRADE. CENTER PAD ON DOOR. SEE CIVIL DRAWINGS FOR TOP OF CONCRETE SPOT ELEVATIONS.
- 7 6" WIDE DOORPAD: PROVIDE 4" THICK CONCRETE REINFORCED W/ #3'S @ 18" O.C. EACH WAY (PLACED AT MID-HEIGHT OF SLAB) OVER COMPACTED SUB-BASE MATERIAL (AS DIRECTED BY THE GEOTECHNICAL REPORT OR ONSITE GEOTECHNICAL ENGINEER) ON PROPERLY PREPARED SUBGRADE. EXTEND CONCRETE 1'-6" PAST DOOR JAMBS. SEE CIVIL DRAWINGS FOR TOP OF CONCRETE SPOT ELEVATIONS.
- 8 ISOLATION JOINT. SEE DETAIL 3/S2 (SPACING NOT TO EXCEED 30'-0" O.C.)
- 9 DETECTABLE WARNING SURFACE (IF REQUIRED), REFER TO CIVIL DRAWINGS FOR ADDITIONAL INFORMATION.

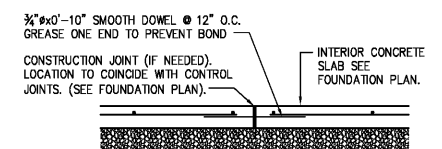
FOUNDATION SCHEDULE

MARK	FOOTING SIZE (W x L x T)	FOOTING REINFORCEMENT LONG. TRANS.	BOTTOM OF FOOTING ELEVATION	PILASTER SIZE	PILASTER REINFORCEMENT VERT. TIES	TOP OF PILASTER ELEVATION	MARK
F1	3'-0" x 3'-0" x 1'-6"	(4) #5's (4) #5's	97'-6"				F1
F2	3'-6" x 3'-6" x 1'-6"	(5) #5's (5) #5's	97'-6"				F2
F3	4'-6" x 4'-6" x 1'-6"	(5) #4 EACH WAY TOP & BOT.	96'-0"	2'-6" x 2'-6"	(12) #6	6/3.2	99'-4"
F4	3'-0" x 3'-6" x 1'-6"	(5) #5's (5) #5's	97'-6"				F4

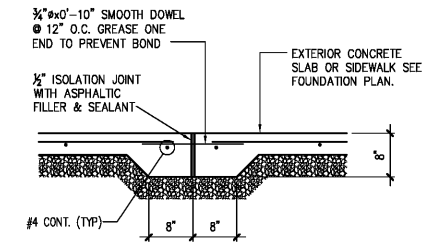
- NOTES:
1. ALL ANCHOR BOLTS SHALL BE SIZE, QUANTITY AND SPACING AS SPECIFIED BY THE PRE-ENGINEERED METAL BUILDING MANUFACTURER. MAINTAIN 3" MINIMUM CONCRETE COVER AROUND BOLTS. TIES SHALL WRAP AROUND ANCHOR BOLTS.
 2. COLUMN BASE PLATES ARE TO REST ON TOP OF SLAB. PROVIDE LEVEL BEARING SURFACE FOR EVEN CONTACT.
 3. COLUMN FOOTING REINFORCEMENT TO BE INTEGRAL WITH CONTINUOUS FOUNDATION REINFORCEMENT (WHERE APPLICABLE).
 4. PROVIDE ANCHOR BOLT TEMPLATES AT COLUMN.
 5. ALL SPREAD FOOTINGS ARE TO BE CENTERED BENEATH COLUMNS UNLESS NOTED OTHERWISE.



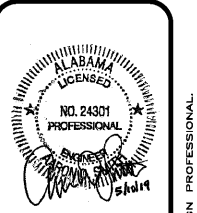
1 TYP. CONTROL JOINT DETAIL
SCALE: 3/4" = 1'-0"



2 TYP. CONSTR. JOINT DETAIL
SCALE: 3/4" = 1'-0"



3 SIDEWALK ISOLATION JOINT
SCALE: 3/4" = 1'-0"



JS Smith Consulting Engineers
Alabama State Certificate of Authorization CA-2283-E
Aaron D. Smith P.E. 24301
P.O. Box 8102 - JOPLIN, MISSOURI 64802
PHONE: 417-624-0444 FAX: 417-624-0430

PROJECT:
NEW O'REILLY AUTO PARTS STORE
11178 COUNTY LINE ROAD
MADISON, AL 35758

O'Reilly AUTO PARTS
CORPORATE OFFICES
253 SOUTH PATTERSON
SPRINGFIELD, MISSOURI 65802
(417) 862-2674 TELEPHONE

DRAWN BY: **MW** CHECKED BY: **AS**
DATE: **05/10/2019**
REVISION:
PROJECT NUMBER:
19098-MS3

SHEET NUMBER
S2