

MADISON ZONING REQUIREMENTS		03.12.19
Category	Totals	
<b>Interior Landscape</b>		
Total SF Landscape Area Provided	1,400 SF	
Requirements: 1 Tree & 4 Shrubs per 200 SF Landscape Area		
1,400/200 = 7		
7 x 1 Tree = 7 Trees Required	7 Trees	
7 x 4 Shrubs = 28 Shrubs Required	28 Shrubs	
Provided: 7 Trees (2 Shumard Oak, 5 Okame Cherry)	7 Trees	
59 Shrubs	59 Shrubs	

MADISON ZONING REQUIREMENTS		03.12.19
Category	Totals	
<b>Perimeter Landscape/Landscape Buffers</b>		
<b>1a.) 20' East Site Landscape Buffer</b>		
Requirements: 1 Tree Per 30 LF of Buffer		
125 LF/30 = 4.17		
4.17 x 1 Tree = 4.17 (5) Trees Required	5 Shade Trees	
Provided: 3 Trees (3 Chinese Pistache) =	3 Shade Trees	
10 Shrubs = 10/5 = Equivalent to: 2 Shade Trees	2 Shade Trees	
<b>Total Provided =</b>	<b>5 Shade Trees</b>	

<b>1b.) 20' East Site Perimeter Landscape</b>		
Requirements: 1 Tree Per 50 LF of Buffer		
125 LF/50 = 2.5 (3) Trees Required	3 Trees	
6 Shrubs Per 50 LF of Buffer		
2.5 x 6 = 15 Shrubs Required	15 Shrubs	
Provided: 3 Trees (3 Chinese Pistache)	3 Trees	
96 Shrubs	96 Shrubs	

<b>2a.) 5' South Site Landscape Buffer</b>		
Requirements: 1 Tree Per 30 LF of Buffer		
205 LF/30 = 6.83		
6.83 x 1 Tree = 6.83 (7) Trees Required	7 Shade Trees	
Provided: 5 Trees (5 C.W. Magnolia) Provided =	5 Shade Trees	
2 Small Trees (2 NRS Holly) Provided = 2/3, Equiv to:	0.67 Shade Trees	
7 Shrubs Provided = 7/5, Equivalent to:	1.4 Shade Trees	
<b>Total Provided =</b>	<b>7.07 (7) Shade Trees</b>	

<b>2b.) 5' South Site Perimeter Landscape</b>		
Requirements: 1 Tree Per 50 LF of Buffer		
205 LF/50 = 4.1 Trees Required	4.1 Trees	
6 Shrubs Per 50 LF of Buffer		
4.1 x 6 = 24.6 (25) Shrubs Required	25 Shrubs	
Provided: 7 Trees (5 Foster Holly, 2 NRS Holly)	7 Trees	
97 Shrubs	97 Shrubs	

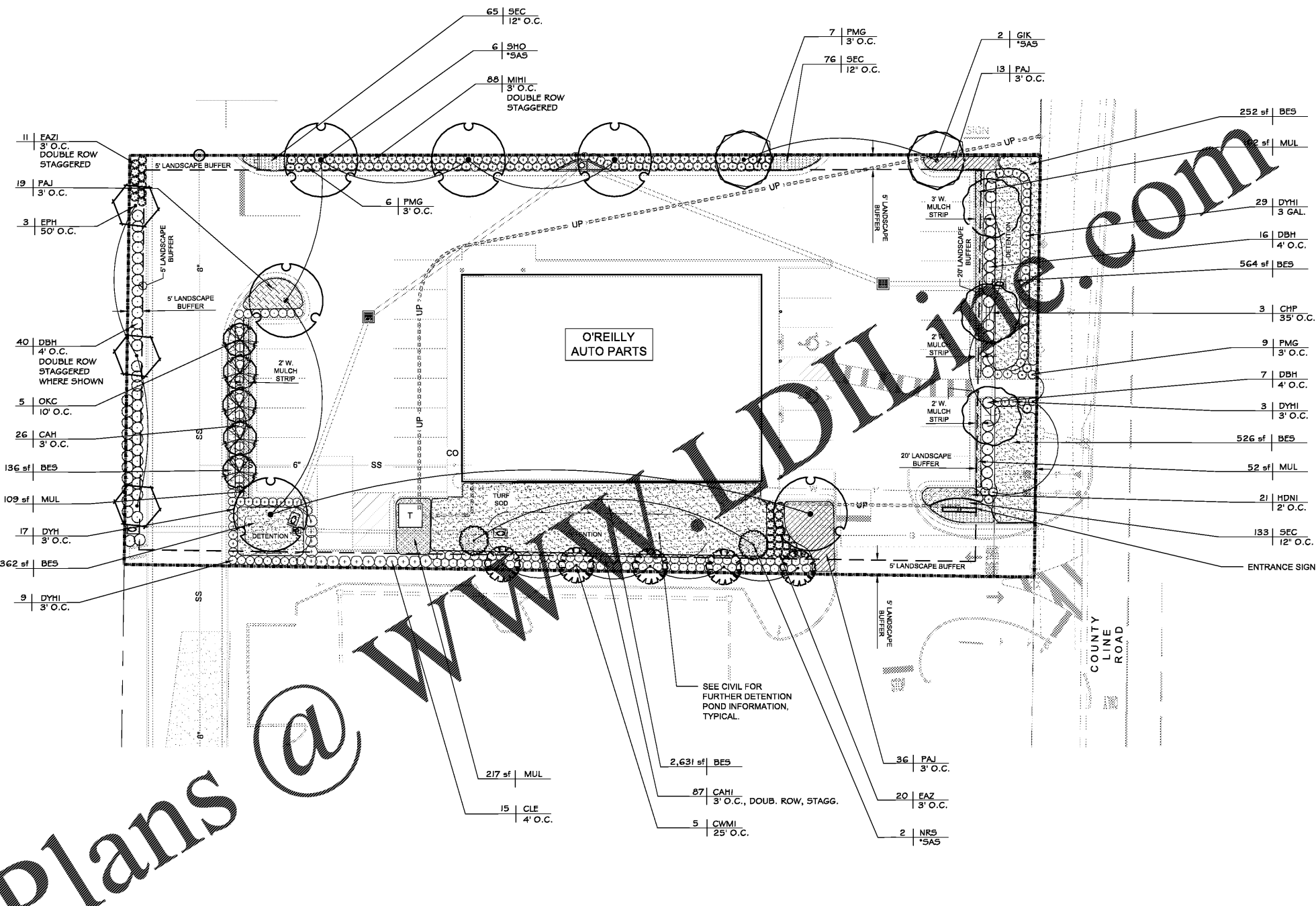
<b>3a.) 5' West Site Landscape Buffer</b>		
Requirements: 1 Tree Per 30 LF of Buffer		
139 LF/30 = 4.63		
4.63 x 1 Tree = 4.63 (5) Trees Required	5 Shade Trees	
Provided: 3 Trees (3 East Palatka Holly) Provided	3 Shade Trees	
10 Shrubs Provided = 10/5, Equivalent to: 2 Shade Trees	2 Shade Trees	
<b>Total Provided =</b>	<b>5 Shade Trees</b>	

<b>3b.) 5' West Site Perimeter Landscape</b>		
Requirements: 1 Tree Per 50 LF of Buffer		
139 LF/50 = 2.78 (3) Trees Required	3 Trees	
6 Shrubs Per 50 LF of Buffer		
2.78 x 6 = 16.68 (17) Shrubs Required	17 Shrubs	
Provided: 3 Trees (3 East Palatka Holly)	3 Trees	
51 Shrubs	51 Shrubs	

<b>4a.) 5' North Site Landscape Buffer</b>		
Requirements: 1 Tree Per 30 LF of Buffer		
235 LF/30 = 7.8 (8)		
8.0 x 1 Tree = 8 Shade Trees Required	8 Shade Trees	
Provided: 5 Trees (3 Shumard Oak, 2 Gingko) Provided		
3 Shumard Oak =	3 Shade Trees	
2 Gingko =	2 Shade Trees	
15 Shrubs = 15/5, Equivalent to:	3 Shade Trees	
<b>Total Shade Trees Provided =</b>	<b>8 Shade Trees</b>	

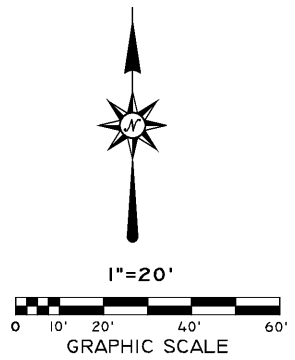
<b>4b.) 5' North Site Perimeter Landscape</b>		
Requirements: 1 Tree Per 50 LF of Buffer		
235 LF/50 = 4.7 (5) Trees Required	5 Trees	
6 Shrubs Per 50 LF of Buffer		
4.7 x 6 = 28.2 (29) Shrubs Required	29 Shrubs	
Provided: 5 Trees (3 Shumard Oak, 2 Gingko)	5 Trees	
100 Shrubs	100 Shrubs	

MADISON ZONING REQUIREMENTS		01.07.19
Category	Totals	
<b>Landscape Buffer Evergreen Trees</b>		
Total % of Landscape Buffer Trees Required to be Evergreen = 40%	40% Evgn Trees	
Total Landscape Buffer Trees Provided =		
Total Evergreen Landscape Buffer Trees Provided = 10		
<b>Total: 10 Evergreen Trees/19 Total Trees = 52.6% Evergreen Trees Provided</b>	<b>52.6% Evgn Trees</b>	



**LANDSCAPE NOTES:**

- 1.) \*SAS = SPACING AS SHOWN
- 2.) MOUND CENTER OF PARKING LOT ISLANDS TO 6" HT, TYPICAL



Order Plans @ WWW.DIPLINE.COM

NO.	REVISIONS	DATE
1	REVISED PER CITY COMMENTS	01/09/19
2	REVISED PER SITE PLAN REVISIONS	02/14/19

**LANDSCAPE PLAN**

**O'REILLY AUTO PARTS**  
 County Line Rd.  
 Madison, Alabama

**AFFILIATED DEVELOPMENT GROUP**  
 Birmingham, AL

DATE: 12-18-18  
 SCALE: 1"=20'  
 CKD BY: R. Gregory  
 DWN BY: B. Pierce

**GONZALEZ - STRENGTH & ASSOCIATES, INC.**  
 CIVIL ENGINEERING, LAND SURVEYING, PLANNING, TRAFFIC & TRANSPORTATION

2176 PARKWAY LAKE DRIVE  
 HOOVER, ALABAMA 35244  
 PHONE: (205) 942-2486  
 FAX: (205) 942-3033  
 www.Gonzalez-Strength.com

© Copyright 2018

STATE OF ALABAMA  
 ROBBIN LANCE GREGORY  
 LICENSE NUMBER 316  
 REGISTERED LANDSCAPE ARCHITECT

12.18.18

DWG. NO. L1.0-R2  
 PROJECT 18-0420