

**SPILL PREVENTION**

PRACTICES SUCH AS GOOD HOUSEKEEPING, PROPER HANDLING OF HAZARDOUS PRODUCTS AND PROPER SPILL CONTROL PRACTICES WILL BE FOLLOWED TO REDUCE THE RISK OF SPILL AND SPILLS FROM DISCHARGING INTO STORMWATER RUNOFF.

**GOOD HOUSEKEEPING**

- 1. QUANTITIES OF PRODUCTS STORED ON-SITE WILL BE LIMITED TO AMOUNT NEEDED FOR THE JOB.
2. PRODUCTS AND MATERIALS WILL BE STORED IN A NEAT, ORDERLY MANNER IN APPROPRIATE CONTAINERS PROTECTED FROM RAINFALL, WHERE POSSIBLE.
3. PRODUCTS WILL BE KEPT IN THEIR ORIGINAL CONTAINERS WITH MANUFACTURER LABELS LEGIBLE AND VISIBLE.
4. PRODUCT MIXING, DISPOSAL AND DISPOSAL OF PRODUCT CONTAINERS WILL BE ACCORDING TO THE MANUFACTURER'S RECOMMENDATIONS.
5. SITE MATERIAL/EQUIPMENT STORAGE/LAYDOWN YARDS SHALL BE FIELD LOCATED AS REQUIRED BY CONTRACTOR, TO CONSIST OF A MINIMUM 4" STONE BED AND BE LOCATED AS TO MINIMIZE THE POSSIBILITY OF STORMWATER COMING INTO CONTACT WITH CHEMICALS OR PETROLEUM PRODUCTS.

**HAZARDOUS WASTES**

ALL HAZARDOUS WASTE MATERIALS WILL BE DISPOSED OF IN THE MANNER SPECIFIED BY LOCAL, STATE, AND/OR FEDERAL REGULATIONS AND BY THE MANUFACTURER OF SUCH PRODUCTS. THE JOB SITE SUPERINTENDENT, WHO WILL ALSO BE RESPONSIBLE FOR SEEING THAT THESE PRACTICES ARE FOLLOWED, WILL INSTRUCT SITE PERSONNEL IN THESE PRACTICES. MATERIAL SAFETY DATA SHEETS (MSDS) FOR EACH SUBSTANCE WITH HAZARDOUS PROPERTIES THAT IS USED ON THE JOB SITE WILL BE OBTAINED AND USED FOR THE PROPER MANAGEMENT OF POTENTIAL WASTES THAT MAY RESULT FROM THESE PRODUCTS. AN MSDS WILL BE POSTED IN THE IMMEDIATE AREA WHERE SUCH PRODUCT IS STORED AND/OR USED AND ANOTHER COPY OF EACH MSDS WILL BE MAINTAINED IN THE CBMPP FILE AT THE JOB SITE CONSTRUCTION TRAILER OFFICE. EACH EMPLOYEE WHO MUST HANDLE A SUBSTANCE WITH HAZARDOUS PROPERTIES WILL BE INSTRUCTED ON THE USE OF MSDS SHEETS AND THE SPECIFIC INFORMATION IN THE APPLICABLE MSDS FOR THE PRODUCT HE/SHE IS USING, PARTICULARLY REGARDING SPILL CONTROL TECHNIQUES.

THE CONTRACTOR WILL IMPLEMENT THE SITE SPILL PREVENTION, CONTROL AND COUNTERMEASURES (SPCC) PLAN AND WILL TRAIN ALL PERSONNEL IN THE PROPER CLEANUP AND HANDLING OF SPILLED MATERIALS. NO SPILLED HAZARDOUS MATERIALS OR HAZARDOUS WASTES WILL BE ALLOWED TO COME IN CONTACT WITH STORMWATER DISCHARGES. IF SUCH CONTACT OCCURS, THE STORMWATER DISCHARGE WILL BE CONTAINED ON SITE UNTIL APPROPRIATE MEASURES IN COMPLIANCE WITH STATE AND FEDERAL REGULATIONS ARE TAKEN TO DISPOSE OF SUCH CONTAMINATED STORMWATER. IT SHALL BE THE RESPONSIBILITY OF THE JOB SITE SUPERINTENDENT TO PROPERLY TRAIN ALL PERSONNEL IN THE USE OF THE SPCC PLAN.

**SANITARY WASTES**

A MINIMUM OF ONE PORTABLE SANITARY UNIT WILL BE PROVIDED FOR EVERY TEN (10) WORKERS ON THE SITE. ALL SANITARY WASTE WILL BE COLLECTED FROM THE PORTABLE UNITS A MINIMUM OF ONE TIME PER WEEK BY A LICENSED PORTABLE FACILITY PROVIDER IN COMPLETE COMPLIANCE WITH LOCAL AND STATE REGULATIONS.

ALL SANITARY WASTE UNITS WILL BE LOCATED ON LEVEL GROUND IN AN AREA WHERE THE LIKELIHOOD OF THE UNIT CONTRIBUTING TO STORM WATER DISCHARGE IS REDUCED TO THE MAXIMUM PRACTICAL EXTENT. ADDITIONAL CONTAINMENT BMP'S MUST BE IMPLEMENTED, SUCH AS GRAVEL BAGS OR SPECIALLY DESIGNED PLASTIC SKID CONTAINERS AROUND THE BASE, TO PREVENT WASTES FROM CONTRIBUTING TO STORM WATER DISCHARGES. THE LOCATION OF SANITARY WASTE UNITS MUST BE IDENTIFIED ON THE CBMPP PHASE II PLAN BY THE CONTRACTOR ONCE THE LOCATIONS HAVE BEEN DETERMINED.

SANITARY SEWER WILL BE PROVIDED BY MUNICIPAL AUTHORITY SYSTEM AT THE COMPLETION OF THIS PROJECT.

**OFFSITE VEHICLE TRACKING**

A STABILIZED CONSTRUCTION EXIT HAS BEEN PROVIDED TO HELP REDUCE VEHICLE TRACKING OF SEDIMENT. SEE EROSION CONTROL DETAIL SHEET(S) FOR CONSTRUCTION EXIT LOCATION AND DETAILS. THE PAVED STREET ADJACENT TO THE SITE EXIT WILL BE INSPECTED DAILY FOR TRACKING OF MUD, DIRT OR ROCK. ANY TRACKED MATERIAL SHALL BE REMOVED BY STREET SWEEPING AND PROPERLY DISPOSED OF BY PRACTICAL MEANS OTHER THAN WASHING INTO STORM DRAINS OR DRAINAGE WAYS. DUMP TRUCKS HAULING MATERIAL FROM THE CONSTRUCTION SITE WILL BE COVERED WITH A TARP/AULIN.

**INVENTORY FOR POLLUTION PREVENTION PLAN**

THE FOLLOWING MATERIALS ARE EXPECTED ON-SITE DURING CONSTRUCTION: CONCRETE PRODUCTS, ASPHALT, PETROLEUM BASED FUELS AND LUBRICANTS FOR EQUIPMENT, TARS, METAL BUILDING MATERIALS, LUMBER, SHEET ROCK, FLOOR COVERINGS, ELECTRICAL WIRES AND FIXTURES, PAINTS/STAINS/FINISHING TREATMENTS, PAINTS, POINT SOLVENTS, ADDITIVES FOR SOIL STABILIZATION, CLEANING SOLVENTS, PESTICIDES, FERTILIZERS, HERBICIDES, CRUSHED STONE, PLASTIC AND METAL PIPES.

**SOIL CLEANUP AND CONTROL PRACTICES**

- (1) LOCAL, STATE AND MANUFACTURER'S RECOMMENDED METHODS FOR SPILL CLEANUP WILL BE CLEARLY POSTED AND PROCEDURES WILL BE MADE AVAILABLE TO SITE PERSONNEL.
(2) MATERIAL AND EQUIPMENT NECESSARY FOR SPILL CLEANUP WILL BE KEPT IN THE MATERIAL STORAGE AREAS. TYPICAL MATERIALS AND EQUIPMENT INCLUDES, BUT IS NOT LIMITED TO: BROOMS, DUSTPANS, MOPS, RAGS, GLOVES, GOGGLES, CAT LITTER, SAND, SAWDUST AND PROPERLY LABELED PLASTIC AND METAL WASTE CONTAINERS.
(3) SPILL PREVENTION PRACTICES AND PROCEDURES WILL BE REVIEWED AFTER A SPILL AND ADJUSTED AS NECESSARY TO PREVENT FUTURE SPILLS.
(4) ALL SPILLS WILL BE CLEANED UP IMMEDIATELY UPON DISCOVERY BY THE CONTRACTOR AS REQUIRED BY LOCAL, STATE, AND FEDERAL REGULATIONS.
(5) FOR SPILLS THAT IMPACT SURFACE WATER (LEAVE A SHEEN ON SURFACE WATER), THE NATIONAL RESPONSE CENTER (NCR) WILL BE CONTACTED WITHIN 24 HOURS AT 1-800-426-2675.
(6) FOR SPILLS OF AN UNKNOWN AMOUNT, THE NATIONAL RESPONSE CENTER (NCR) WILL BE CONTACTED WITH 24 HOURS AT 1-800-426-2675. SEE PROJECT SPILL PREVENTION CONTAINMENT AND COUNTERMEASURES PLAN (SPCCP) FOR REPORTING REQUIREMENTS.

**PETROLEUM BASED PRODUCTS**

CONTAINERS FOR PRODUCTS SUCH AS FUELS, LUBRICANTS AND TARS WILL BE OBSERVED DAILY FOR LEAKS AND SPILLS. THIS INCLUDES ON-SITE VEHICLE AND MACHINERY DAILY OBSERVATIONS AND REGULAR PREVENTATIVE MAINTENANCE OF SUCH EQUIPMENT. EQUIPMENT MAINTENANCE AREAS WILL BE LOCATED AWAY FROM STATE WATERS, NATURAL DRAINS AND STORM DRAINAGE INLETS. IN ADDITION, TEMPORARY FUELING TANKS SHALL HAVE A SECONDARY CONTAINMENT LINER, SPILL PREVENTION CONTAINMENT, & COUNTERMEASURES PLAN, TO PREVENT SITE CONTAMINATION. DISCHARGE OF OILS, FUELS AND LUBRICANTS IS PROHIBITED. PROPER DISPOSAL METHODS WILL INCLUDE COLLECTION IN A SUITABLE CONTAINER AND DISPOSAL AS REQUIRED BY LOCAL, STATE, AND FEDERAL REGULATIONS.

PAINTS - ALL PRODUCTS WILL BE STORED IN TIGHTLY SEALED ORIGINAL CONTAINERS WHEN NOT IN USE. EXCESS PRODUCT WILL NOT BE DISCHARGED TO THE STORM WATER COLLECTION SYSTEM. MATERIALS USED WITH THESE PRODUCTS AND PRODUCT CONTAINERS WILL BE DISPOSED OF ACCORDING TO MANUFACTURER'S SPECIFICATIONS AND RECOMMENDATIONS.

CONCRETE TRUCKS WASHING - NO CONCRETE TRUCK WILL BE ALLOWED TO WASH OUT OR DISCHARGE SURPLUS CONCRETE OR DRUM WASH WATER ON-SITE UNLESS AN APPROVED METHOD OF CONTAINMENT IS USED.

FERTILIZER - THESE PRODUCTS WILL BE APPLIED AT RATES THAT DO NOT EXCEED THE MANUFACTURER'S SPECIFICATIONS OR ABOVE THE GUIDELINES SET FORTH IN THE "ALABAMA HANDBOOK FOR EROSION CONTROL, SEDIMENT CONTROL AND STORMWATER MANAGEMENT ON CONSTRUCTION SITES AND URBAN AREAS", LATEST EDITION, ANY STORAGE OF THESE MATERIALS WILL BE UNDER ROOF IN SEALED CONTAINERS.

BUILDING MATERIALS - NO BUILDING OR CONSTRUCTION MATERIALS WILL BE BURIED OR DISPOSED OF ON-SITE. ALL SUCH BUILDING MATERIALS WILL BE DISPOSED OF IN A PROPER WASTE DISPOSAL FACILITY.

**WASTE MATERIALS**

ALL WASTE MATERIALS WILL BE COLLECTED AND STORED IN A SECURELY LIDDED METAL DUMPSTER. THE DUMPSTER WILL MEET OIL SOLID WASTE MANAGEMENT REGULATIONS. ALL TRASH AND CONSTRUCTION DEBRIS FROM THE SITE WILL BE DEPOSITED IN THE DUMPSTER. THE DUMPSTER WILL BE EMPLOYED A MINIMUM OF ONCE PER WEEK OR MORE OFTEN IF NECESSARY AND TRASH WILL BE HAULED AS REQUIRED BY LOCAL REGULATIONS. NO CONSTRUCTION WASTE WILL BE BURIED.

ALL PERSONNEL WILL BE INSTRUCTED ON PROPER PROCEDURES FOR WASTE DISPOSAL. A NOTICE STATING THESE PRACTICES WILL BE POSTED AT THE JOB SITE AND THE CONTRACTOR WILL BE RESPONSIBLE FOR SEEING THAT THESE PROCEDURES ARE FOLLOWED.

**NON-STORMWATER DISCHARGES**

ALL NON-STORM WATER DISCHARGES WILL BE ROUTED THROUGH ON-SITE BMP'S AND THE STORM WATER MANAGEMENT SYSTEMS WHERE POSSIBLE. THESE DISCHARGES INCLUDE FLUSHING OF WATER AND FIRE LINES, IRRIGATION WATER, GROUND WATER, DEWATERING OF PITS OR DEPRESSIONS WITHIN THE CONSTRUCTION SITE AND RINSE OFF WATER OF NON-TOXIC MATERIALS.

**DUST CONTROL**

EARTHMOVING ACTIVITIES - APPLICATION OF WATER BY MEANS OF TRUCKS AT SUFFICIENT FREQUENCY AND QUANTITY PRIOR TO CONDUCTING, DURING, AND AFTER EARTHMOVING OPERATIONS. CONTRACTOR SHALL DETERMINE ADEQUATE FREQUENCY BASED ON AREA CONDITIONS.

STORAGE PILES - APPLICATION OF WATER BY MEANS OF TRUCKS, HOSES, SPRINKLERS, ETC. AT A FREQUENCY TO PROVIDE A STABLE DUST-FREE SURFACE. CONTRACTOR SHALL DETERMINE ADEQUATE FREQUENCY BASED ON AREA CONDITIONS.

INACTIVE CONSTRUCTION AREAS - APPLICATION OF WATER BY MEANS OF TRUCKS, HOSES, SPRINKLERS, ETC. TO DEVELOP A SURFACE CRUST. CONTRACTOR SHALL DETERMINE ADEQUATE FREQUENCY BASED ON AREA CONDITIONS.

**CEMENT & CONCRETE WASHOUT**

- 1. CONCRETE WASTE MANAGEMENT PERTAINS TO WASTE FROM CONCRETE READY-MIX TRUCKS, MASONRY OPERATIONS, AND SIMILAR ACTIVITIES.
2. STATE AND/OR LOCAL REGULATIONS DO NOT PROHIBIT CONCRETE WASH OUT ON-SITE.
3. DISCHARGE OF EXCESS OR WASTE CONCRETE AND/OR WASH WATER FROM CONCRETE TRUCKS IS ALLOWED AT THE CONSTRUCTION SITE ONLY IF COMMERCIALY AVAILABLE ABOVE GROUND PORTABLE CONCRETE WASHOUT CONTAINERS ARE PROVIDED AND PROTECTED FROM VEHICLE TRAFFIC AND CLEARLY IDENTIFIED BY LEGAL SIGNAGE, AND MUST BE LOCATED OUTSIDE OF VEGETATED BUFFERS AND AS FAR AS PRACTICABLE FROM STORMWATER CONVEYANCES AND INLET STRUCTURES AND WATER BODIES. PORTABLE CONCRETE WASHOUT CONTAINERS SHALL CONTAIN AND/OR ACTIVELY MANAGE BOTH SOLID AND FLUID COMPONENTS OF THE MIX. CONCRETE WASHOUT CONTAINERS MUST BE CLEANED OR EXCHANGED WHEN THE REMAINING VOLUME IS REDUCED BY 80% TO PREVENT ANY OVERFLOW OR SPILLAGE EVENT.
4. ALTERNATIVELY, WASTE CONCRETE CAN BE PLACED INTO FORMS TO MAKE RIP RAP AND/OR OTHER USEFUL CONCRETE PRODUCTS. PORTABLE CONCRETE WASHOUT CONTAINERS SHALL BE DISPOSED IN ACCORDANCE WITH APPLICABLE LOCAL, STATE AND FEDERAL REGULATIONS. THE GC IS RESPONSIBLE FOR ASSURING THAT THESE PROCEDURES, APPLICABLE LAWS, AND ENVIRONMENTAL REGULATIONS ARE FOLLOWED. THE LOCATION OF CONCRETE WASHOUT CONTAINERS SHALL BE SHOWN ON THE SITE MAPS.
5. TEMPORARY SEEDING OR STABILIZATION

**TEMPORARY SEEDING OR STABILIZATION**

- 1. CONSIDERATION MUST BE GIVEN TO ANTICIPATED CLIMATE AND SEASONAL CONDITIONS WHEN PLANTING.
2. SEED SHALL BE FREE OF WEEDY SPECIES AND APPROPRIATE FOR SITE SOILS AND REGIONAL CLIMATE. MULCH PER THE CONSTRUCTION DRAWINGS AND THE 02000 PLANTING SPECIFICATION IMMEDIATELY AFTER TOPSOIL IS APPLIED AND FINAL GRADE IS REACHED.
3. THE SITE HAS ACHIEVED FINAL STABILIZATION ONCE ALL AREAS ARE COVERED WITH EITHER FINAL VEGETATION OR PAVEMENT, OTHER LANDSCAPING COVER (STONE, MULCH, ETC.), OR HAVE A STAND OF GRASS WITH A MINIMUM OF 100% COVERAGE OVER THE ENTIRE VEGETATED AREA, OR GREATER IN ACCORDANCE WITH THE GENERAL PERMIT REQUIREMENTS.
4. VEGETATED AREAS MUST BE WATERED, FERTILIZED, AND RESEED AS NECESSARY TO ACHIEVE THIS REQUIREMENT.
5. THE VEGETATIVE DENSITY MUST BE MAINTAINED THROUGHOUT THE PROJECT CONSTRUCTION TO BE CONSIDERED STABILIZED. AREAS PROTECTED BY EROSION CONTROL BLANKETS ARE NOT PERMANENTLY STABILIZED UNTIL THE APPLICABLE GENERAL PERMIT OR FINAL VEGETATIVE DENSITY IS ACHIEVED.
6. RIP-RAP, MULCH, GRAVEL, DECOMPOSED GRANITE OR OTHER EQUIVALENT PERMANENT STABILIZATION MEASURES MAY BE EMPLOYED IN LIEU OF VEGETATION BASED ON SITE-SPECIFIC CONDITIONS, DESIGN AND GOVERNING AUTHORITY APPROVAL.
7. ALL VEGETATED AREAS SHALL BE INSPECTED REGULARLY TO CONFIRM THAT A HEALTHY STAND OF GRASS IS MAINTAINED.

**PERMANENT SEEDING, SOD OR MULCHING**

- 1. THE GC IS REQUIRED TO, AT A MINIMUM, INITIATE SOIL STABILIZATION MEASURES IMMEDIATELY WHENEVER ANY CLEARING, GRADING, EXCAVATING OR OTHER EARTH DISTURBING ACTIVITIES HAVE PERMANENTLY CEASED ON ANY PORTION OF THE SITE, OR TEMPORARILY CEASED ON ANY PORTION OF THE SITE AND WILL NOT LIKELY RESUME FOR A PERIOD EXCEEDING 14 CALENDAR DAYS.
2. THE GC HAS 7 DAYS FROM INITIATION OF STABILIZATION TO COMPLETE SOIL PREPARATION, SEEDING, MULCHING, AND ANY OTHER REQUIRED ACTIVITIES RELATED TO THE PLANTING AND ESTABLISHMENT OF VEGETATION. THE GC ALSO HAS 7 DAYS FROM INITIATION OF STABILIZATION TO COMPLETELY INSTALL NON-VEGETATED MEASURES, IF UTILIZED.
3. ALL DISTURBED AREAS MUST BE STABILIZED TEMPORARILY WITH THE USE OF FAST-GERMINATING ANNUAL GRASS/GRAIN VARIETIES APPROPRIATE FOR SITE SOIL AND CLIMATE CONDITIONS. MULCH IS REQUIRED FOR ALL SEEDING APPLICATIONS, AND ALL MULCH APPLICATIONS MUST INCLUDE A SUITABLE FORM OF MULCH ANCHORING TO MINIMIZE MOVEMENT OF MULCH BY WIND OR WATER.
4. ALTERNATIVE STABILIZATION MEASURES TO SEEDING, SUCH AS ANCHORED MULCH APPLICATION (WITHOUT SEEDING), MAY BE UTILIZED DURING PERIODS WHEN VEGETATIVE GROWTH IS UNLIKELY (E.G. WINTER MONTHS).
5. IT IS NOT ACCEPTABLE TO ALLOW BARE SOIL TO REMAIN EXPOSED AT ANY TIME DURING THE YEAR, REGARDLESS OF WEATHER/TEMPERATURE/SITE CONDITIONS.
6. ALTERNATIVE STABILIZATION MEASURES INCLUDE, BUT ARE NOT LIMITED TO: ANCHORED STRAW/MULCH, WOOD CELLULOSE FIBER MULCH, SPRAY-ON SOIL GLUES/BINDERS, AND ROLLED EROSION CONTROL PRODUCTS.
7. ROLLED EROSION CONTROL PRODUCTS (NETS, BLANKETS, TURF REINFORCED MATES) AND VEGETATED AREAS NOT MEETING REQUIRED VEGETATIVE DENSITIES FOR FINAL STABILIZATION MUST BE INSPECTED DAILY. MISSING, RIPPING AND OTHER SIGNS OF EROSION INDICATE THE SPECIFIED EROSION CONTROL DEVICE IS NOT FUNCTIONING OR INSTALLED PROPERLY AND/OR ADDITIONAL EROSION CONTROL DEVICES ARE WARRANTED.
8. SEED MIX WITH MULCHING AND FERTILIZER RATES: SEE DETAIL SHEET EC5

**CBMPP SEQUENCE NOTES:**

- 1. PRIOR TO THE LAND DISTURBING ACTIVITY, THE CONTRACTOR SHALL SCHEDULE A PRE-CONSTRUCTION MEETING WITH THE SITE INSPECTOR.
2. THE CONTRACTOR SHALL OBSERVE THE PROJECT SEQUENCE SHOWN ON THE PLANS. THE CONTRACTOR SHALL MAINTAIN CAREFUL SCHEDULING AND PERFORMANCE TO INSURE THAT LAND STRIPPED OF ITS NATURAL COVER IS EXPOSED THE MINIMUM AMOUNT OF TIME AND THE MINIMUM AREA AS IS PRACTICAL THROUGH GRADING PHASES.
3. A COPY OF THE APPROVED LAND DISTURBANCE PLAN AND PERMIT SHALL BE PRESENT ON-SITE AT ALL TIMES. THE LAND DISTURBANCE PERMIT SHALL BE POSTED ON THE PERMIT SIGN AS SHOWN ON PLANS.
4. THE ESCAPE OF SEDIMENT FROM THE SITE SHALL BE PREVENTED BY THE INSTALLATION OF EROSION AND SEDIMENT CONTROL MEASURES AND PRACTICES PRIOR TO OR CONCURRENT WITH LAND-DISTURBING ACTIVITIES.
5. PRIOR TO COMMENCING LAND DISTURBANCE ACTIVITY, THE LIMITS OF LAND DISTURBANCE, AND WETLANDS (IF PRESENT) SHALL BE CLEARLY AND ACCURATELY DEMARCATED WITH STAKES, RIBBONS, OR OTHER APPROPRIATE MEANS.
6. THE LOCATION AND EXTENT OF ALL AUTHORIZED LAND DISTURBANCE ACTIVITY SHALL BE DEMARCATED FOR THE DURATION OF THE CONSTRUCTION ACTIVITY. NO LAND DISTURBANCE SHALL OCCUR OUTSIDE THE APPROVED LIMITS INDICATED ON THE APPROVED PLANS.
7. PRIOR TO ANY OTHER CONSTRUCTION, A STABILIZED CONSTRUCTION ENTRANCE SHALL BE CONSTRUCTED AT EACH POINT OF ENTRY TO OR EXIT FROM THE SITE OR ONTO ANY PUBLIC ROADWAY.
8. SEDIMENT AND EROSION CONTROL MEASURES SHOULD BE OBSERVED BY CONTRACTOR AFTER EACH RAIN EVENT. EACH DEVICE IS TO BE MAINTAINED OR REPLACED IF SEDIMENT ACCUMULATION HAS REACHED ONE HALF THE CAPACITY OF THE DEVICE. ADDITIONAL DEVICES MUST BE INSTALLED IF NEW CHANNELS HAVE DEVELOPED.
9. MAINTAIN FULL COORDINATION WITH THE DESIGN PROFESSIONAL, CONTRACTOR AND REGULATORY INSPECTOR AT ALL TIMES REGARDING PROJECT SEQUENCE.
10. SEDIMENT SHALL NOT BE WASHED INTO INLETS. ACCUMULATED SEDIMENT REMOVED FROM ON-SITE BMP'S SHALL BE USED ON-SITE IN NON-STRUCTURAL AREAS AND APPROPRIATELY STABILIZED. SEDIMENT SHALL NOT BE ALLOWED TO ENTER STATE WATERS. ANY SEDIMENT ACCUMULATED OFF-SITE SHALL BE REMOVED BY HAND AND PLACED IN APPROPRIATE AREAS ON-SITE, AND STABILIZED AS REQUIRED BY ABOVE NOTES.
11. EROSION CONTROL MEASURES WILL BE MAINTAINED AT ALL TIMES, IF FULL IMPLEMENTATION OF THE APPROVED PLAN DOES NOT PROVIDE FOR EFFECTIVE EROSION CONTROL. ADDITIONAL EROSION AND SEDIMENT CONTROL MEASURES SHALL BE IMPLEMENTED TO CONTROL OR TREAT THE SEDIMENT SOURCE AS DIRECTED BY THE ON-SITE INSPECTOR OR THE CIVIL ENGINEER. THE FOLLOWING INITIAL EROSION CONTROL MEASURES SHALL BE IMPLEMENTED PRIOR TO ANY OTHER CONSTRUCTION ACTIVITY: (#12-#18)
12. THE CONSTRUCTION EXIT, CONSISTING OF A MINIMUM PAD SIZE OF 20 FEET BY 50 FEET WITH A MINIMUM OF 6" THICK STONE, SHALL BE PLACED AS SHOWN ON THE PLAN. THE STONE SIZE SHOULD CONSIST OF COURSE AGGREGATE BETWEEN 1.5" & 3.5" IN DIAMETER AND OVERLAP ON A GEOTEXTILE UNDERLINER. THE GEOTEXTILE UNDERLINER SHALL MEET THE REQUIREMENTS OF ASHTO M288-96, SECTION 7.3.
13. IMMEDIATELY AFTER THE ESTABLISHMENT OF CONSTRUCTION ENTRANCE/EXITS, ALL PERIMETER EROSION CONTROL AND STORM WATER MANAGEMENT DEVICES SHALL BE INSTALLED AS SHOWN ON THE CBMPP PHASE 1 PLAN.
14. TYPE "A" SILT FENCE SHOULD BE INSTALLED AT THE PERIMETER OF THE DISTURBED AREA AS SHOWN ON THE PLAN. THE SILT FENCE SHOULD BE PLACED IN ACCORDANCE WITH THE "ALABAMA HANDBOOK FOR EROSION CONTROL, SEDIMENT CONTROL AND STORMWATER MANAGEMENT ON CONSTRUCTION SITES AND URBAN AREAS", LATEST EDITION. THE SILT FENCE SHOULD BE KEPT OPEN AT ALL TIMES AND REPAIRED WHEN REQUESTED BY THE SITE INSPECTOR OR THE PROJECT DESIGN PROFESSIONAL OF RECORD. SILT SHOULD BE REMOVED WHEN ACCUMULATION REACHES 1/2 HEIGHT OF THE BARRIER. THE PERIMETER SILT FENCE SHOULD BE INSPECTED DAILY FOR FAILURES. ANY FAILURES OF SAID FENCING SHOULD BE REPAIRED IMMEDIATELY.
15. FILTER DROP INLET PROTECTION AND WATTLE SEDIMENT BARRIERS SHALL BE INSTALLED AS SHOWN ON THE CBMPP PHASE 1 PLAN.
16. CONTRACTOR SHALL BEGIN INSTALLATION OF PERIMETER CONTROLS AS DEFINED ON THE CBMPP PHASE 1 PLAN. CONTRACTOR SHALL ONLY USE GREEN GRASS, UNLESS AS REQUIRED TO INSTALL INITIAL BMP'S.
17. AFTER INSTALLATION OF INITIAL EROSION CONTROL MEASURES THE SITE CONTRACTOR SHALL SCHEDULE AN INSPECTION BY THE DCP OR OCL. NO OTHER CONSTRUCTION ACTIVITIES SHALL OCCUR UNTIL THE OCP OR OCL APPROVES THE INSTALLATION OF SAID EROSION CONTROL MEASURES, IF UNFORESEEN CONDITIONS EXIST IN THE FIELD THAT WARRANT ADDITIONAL EROSION CONTROL MEASURES. THE CONTRACTOR MUST CONSTRUCT ANY ADDITIONAL EROSION CONTROL DEVICES DEEMED NECESSARY BY THE SITE INSPECTOR.
18. ONLY AFTER APPROVAL OF THE CBMPP PHASE I INSTALLATION, THE CONTRACTOR MAY PROCEED WITH CLEARING AND GRADING ACTIVITIES AND DEMOLITION.
19. NO BURN OR BURN PITS SHALL BE PERMITTED ON THE CONSTRUCTION SITE WITHOUT WRITTEN PERMISSION BY THE OWNER AND/OR THE ENGINEER OF RECORD.
20. MULCH OR TEMPORARY GRASSING SHALL BE APPLIED TO ALL EXPOSED AREAS WHERE THE OPERATION WILL NOT RESUME FOR A PERIOD EXCEEDING (13) CALENDAR DAYS. ALL DISTURBED AREAS NOT REACHED LONGER THAN 30 DAYS SHALL BE STABILIZED WITH TEMPORARY VEGETATION.
21. THE CONSTRUCTION EXIT SHALL BE MAINTAINED IN A CONDITION WHICH WILL PREVENT TRACK OR FLOW OF MUD ONTO PUBLIC RIGHT-OF-WAY. THIS MAY REQUIRE PERIODIC TOP DRESSING WITH 1"-3" OF STONE, AS CONDITIONS DEMAND. ALL MATERIALS SPILLED, DROPPED, WASHED, OR TRACKED FROM VEHICLE ONTO PUBLIC ROADWAY OR INTO STORM DRAIN MUST BE REMOVED IMMEDIATELY.
22. CONTRACTOR SHALL OBSERVE BMP'S ONCE EACH WORKING DAY TO ENSURE MEASURES ARE FUNCTIONING PROPERLY.
23. FAILURE TO INSTALL, OPERATE, OR MAINTAIN ALL EROSION CONTROL MEASURES WILL RESULT IN ALL CONSTRUCTION BEING STOPPED ON THE JOB UNTIL SUCH MEASURES ARE CORRECTED BACK TO THE APPROVED CBMPP PLANS.
24. THE CONTRACTOR SHALL BE RESPONSIBLE FOR MAINTENANCE OF ALL EROSION CONTROL MEASURES INCLUDING REPLACING OR REPAIRING ANY DAMAGED DEVICES DUE TO ANY CONSTRUCTION ACTIVITY BY OTHERS.
25. CUT AND FILL SLOPES ARE NOT TO EXCEED "2:1H:1V" OR AS SHOWN ON GRADING PLAN.
26. TYPE "A" SILT FENCE SHALL BE PLACED AT THE TOE OF ALL DIRT STOCKPILE AREAS.
27. ALL DRAINAGE SWALES SHALL BE APPLIED WITH VEGETATIVE COVER AS SOON AS FINAL GRADE IS ACHIEVED.
28. ALL GRADED AREAS SHALL BE APPLIED WITH VEGETATIVE COVER OR RIPRAP AS SHOWN ON PLANS AS SOON AS FINAL GRADE IS ACHIEVED.
29. MULCH OR TEMPORARY GRASSING SHALL BE APPLIED TO ALL EXPOSED AREAS WHERE THE OPERATION WILL NOT RESUME FOR A PERIOD EXCEEDING (13) CALENDAR DAYS.
30. CONTRACTOR SHALL TRANSITION FROM CBMPP PHASE 1 TO CBMPP PHASE 2 EROSION CONTROL AS SOON AS EARTHWORK AND STORM DRAINAGE SEQUENCING WILL PRACTICALLY ALLOW.
31. THE CONTRACTOR SHALL BEGIN PREPARING AND IMPLEMENTING FINAL SITE STABILIZATION WITH PERMANENT VEGETATION & BMP'S.
32. AFTER CURBING, GRADED AGGREGATE BASE, AND PAVEMENT HAS BEEN INSTALLED FILTER DROP INLET PROTECTION SHALL CONTINUE TO BE USED ON ALL GRADE INLETS UNTIL SUCH TIME AS FINAL STABILIZATION IS ACHIEVED.
33. ALL ROADWAY AND PARKING SHOULDERS SHOULD BE GRASSED AS SOON AS FINAL GRADE IS ACHIEVED BEHIND CURBS. UPON SITE STABILIZATION A NOTICE OF TERMINATION (NOT) SHALL BE SUBMITTED TO
34. THE APPLICABLE STATE AGENCY BY THE CONTRACTOR.

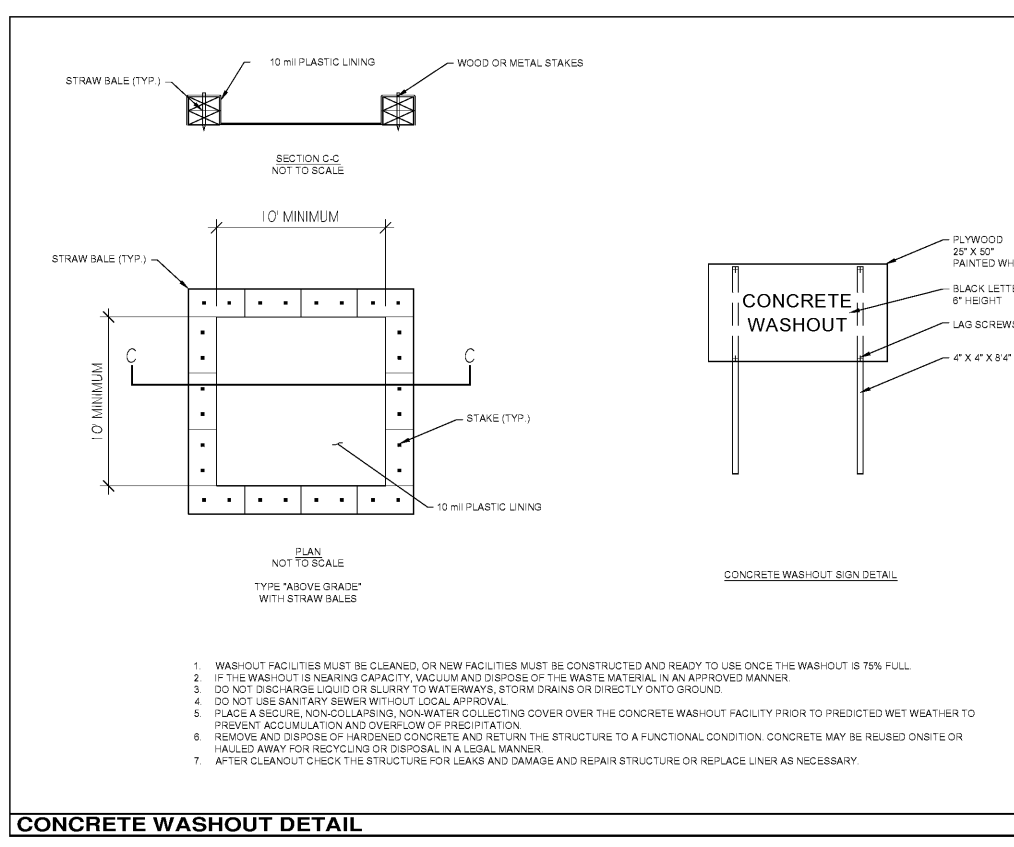
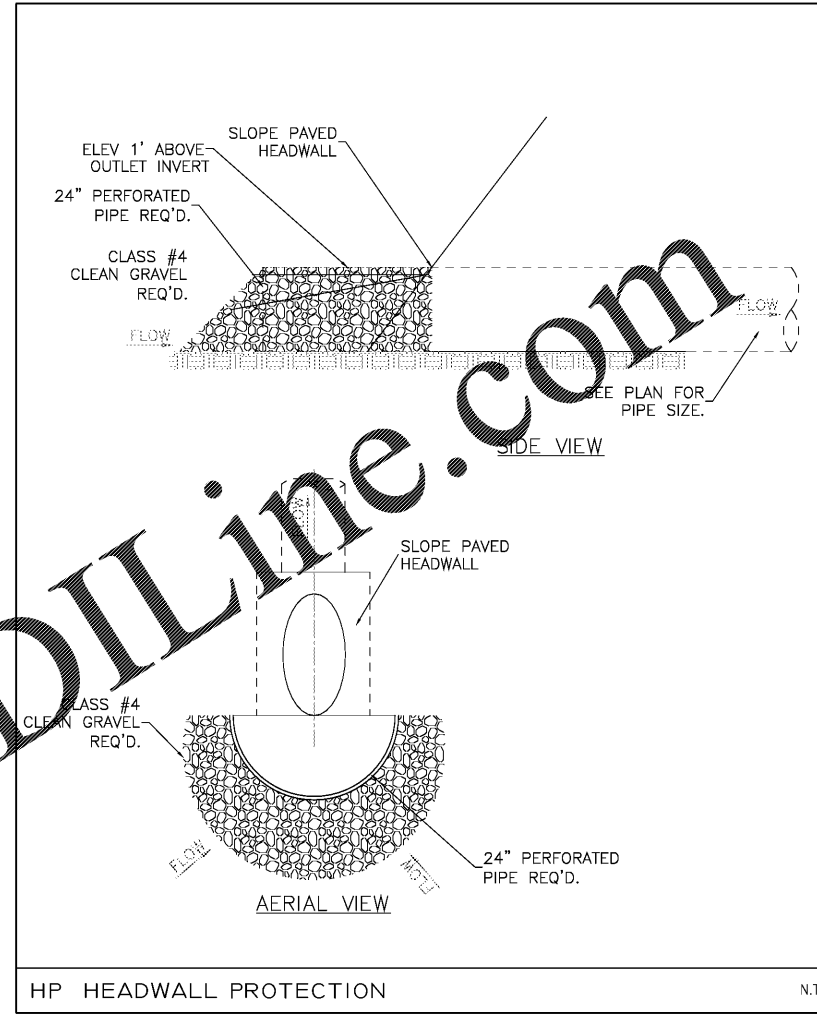


Table with columns: NO., REVISIONS, DESCRIPTION, DATE. Includes entry 1: REVISED PER OWNER, 3-14-19.

CBMPP DETAILS AND NOTES
O'REILLY AUTO PARTS
County Line Rd.
Madison, Alabama
AFFILIATED DEVELOPMENT GROUP
Birmingham, AL

GONZALEZ - STRENGTH & ASSOCIATES, INC.
CIVIL ENGINEERING, LAND SURVEYING, PLANNING, TRAFFIC & TRANSPORTATION
2176 PARKWAY LAKE DRIVE
HOOPER, ALABAMA 35244
PHONE: (205) 942-2486
FAX: (205) 942-2033
www.Gonzalez-Strength.com



DWG NO. C4B-R1
PROJECT 18-0420