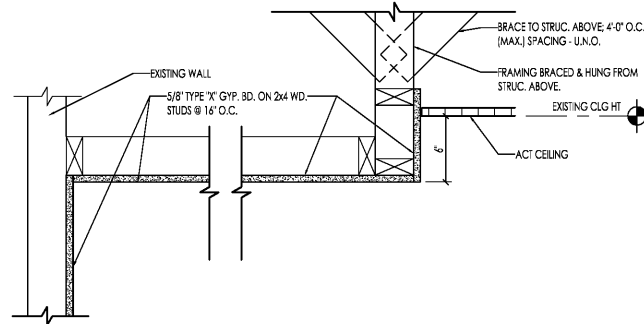
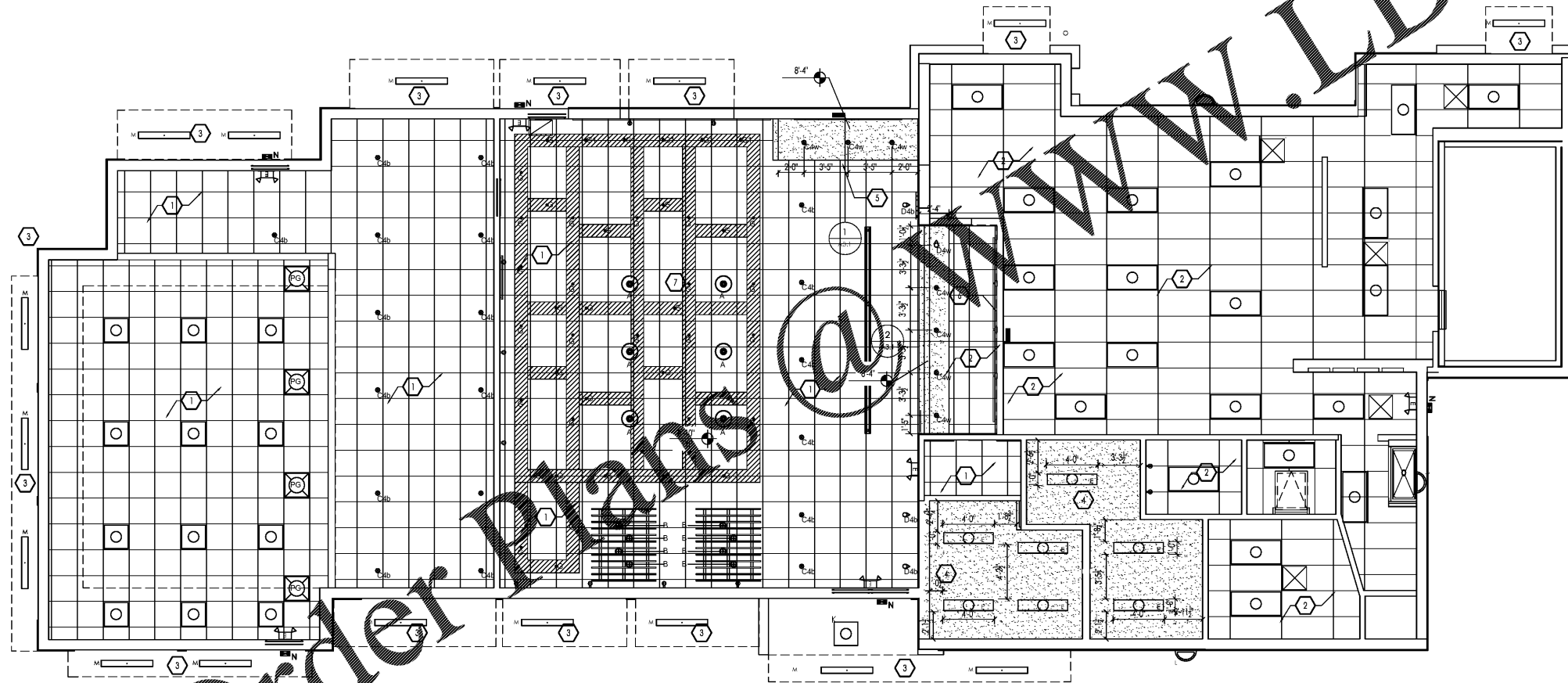


2 SOFFIT DETAIL @ SERVING COUNTER
A3.1 SCALE: 1-1/2" = 1'-0"



1 SOFFIT DETAIL
A3.1 SCALE: 1-1/2" = 1'-0"



REFLECTED CEILING PLAN
SCALE: 1/8" = 1'-0"

RCP GENERAL NOTES:

- ALL DIMENSIONS SHOWN ON REFLECTED CEILING PLAN ARE FROM FACE OF WALL FINISH UNLESS NOTED OTHERWISE.
- INDICATED HEIGHTS ON PLAN ARE FROM ABOVE FINISH FLOOR (A.F.F.).
- G.C. TO COORD. LIGHTING W/ INTERIOR DECOR (ID) DRAWINGS.
- CONTRACTOR SHALL VERIFY FIXTURE QUANTITIES AND MAKE PROPER ADJUSTMENTS FOR ANY CHANGES IN PLAN DUE TO ADDITIONAL REQUIREMENTS, LOCAL CODES, ETC.
- G.C. TO REPLACE ALL EXISTING LIGHTING AS NOTED WITH FIXTURES FROM ENERGYWISE. CONTACT: JENNIFER WADDICK - 225-276-0021 - JENNIFER@ENERGYWISEMAIL.COM. COORDINATE FINAL FIXTURE LOCATION AND TYPE WITH OWNER AND LIGHTING VENDOR PRIOR TO INSTALL.
- ALL FIXTURES SHALL BE LOCATED IN CENTER OF CEILING TILES UNLESS OTHERWISE NOTED. FIXTURES SHALL BE RE-PLACED APPROX. @ LOCATIONS OF EXIST. LIGHTS.
- FOR FINISH SPECIFICATIONS SEE FINISH SCHEDULE ON ID SHEETS.
- CONTRACTOR TO RE-INSTALL ALL EXISTING CEILING-MOUNTED ITEMS (I.E. EXIT SIGN, SPEAKERS, ETC.) AS REQ'D.
- REPAIR & REPLACE EXIST. EXIT SIGNAGE & LIGHTING AS REQUIRED. FIELD VERIFY CONDITIONS.
- REPAIR & REPLACE EXIST. SPEAKER GRILLS AS REQ'D FOR 'L'KID' FINISH.
- G.C. TO PROVIDE ALL ELECTRICAL ENGINEERING AS DESIGN-BUILD AND TO VERIFY ALL LOADS AND CIRCUITS. COORD. ADDED OUTLETS WITH THESE AND DECOR VENDOR.
- G.C. TO PROVIDE ELECTRICAL OUTLETS AS SHOWN ON ID SHEETS. 18" OF COVER UNLESS OTHERWISE NOTED.
- ALL EXISTING DINING-ROOM LIGHTING FIXTURES TO BE REMOVED. NEW FIXTURES ARE SHOWN ON RCP.

RCP KEY NOTES:

- EXISTING ACT CEILING TILES TO BE REMOVED. REPLACED @ DINING ROOM. CLEAN, REPAIR, AND REPAINT GRID. NEW TILES TO BE: ARMSTRONG FINE FISSURED; COLOR: ADOBE. REPLACE/REINSTALL ALL DIFFUSERS, ETC.
- REMOVE & REPLACE ALL EXISTING CEILING TILES AND GRID @ KITCHEN / BACK OF HOUSE / OFFICE & STAFF REST W/ NEW VINYL-COATED 2'X4' ACOUSTICAL CEILING TILES AND GRID. CLEAN AND REPAINT HWY SUPPLY & RETURN GRILLS. REMOVE AND REPLACE ALL LIGHT-FIXTURES W/ NEW LED FIXTURES AS RECORDED.
- REMOVE & REPLACE ALL EXISTING CANOPY AND WALL SCONCE LIGHTS; USE REMOVED MANSARD SOFFIT CIRCUIT FOR NEW LIGHTING; G.C. TO PROVIDE ALL ELECTRICAL DESIGN-BUILD AND TO VERIFY ALL LOADS AND CIRCUITS.
- REMOVE AND REPLACE GYP. CEILING AT RESTROOMS AND PAINT CEILING WHITE. GYP. ON 2X FRAMING @ 16" O.C. - PROVIDE NEW SPRINKLER ESCUTCHEON COVER PLATES, MECHANICAL SUPPLY/RETURN GRILLS, ETC. REPLACE LIGHTING FIXTURES IN RESTROOMS W/ NEW IN PLACE.
- NEW BULKHEAD, SEE DETAIL 1/A3.1.
- MENU BULKHEAD - REFINISHED SPECIFIED AT ID DRAWINGS. PROVIDE STAINLESS STEEL (SS) END-CAP AT BASE OF BULKHEAD AND AT WALL-ENDS INTERSECTING BULKHEAD.
- NEW INTERIOR DECOR CEILING TRELLIS - SEE ID SHEETS.
- PROVIDE POWER AND CABLE CONNECTION FOR NEW TV LOCATION.

RCP LEGEND:

	TYPE M - ENERGYWISE - WET LISTED 4' LED CANOPY FIXTURE
	TYPE L - ENERGYWISE - SURFACE MOUNT EXT. WALL SCONCE - COLOR TO MATCH ALUM. STOREFRONT FRAMES
	TYPE N - ENERGYWISE - LED WALL PAK
	TYPE SC-1L - WALL SCONCE - COORD. W/ DECOR VENDOR
	TYPE B - ENERGYWISE LED RECESSED DOWNLIGHT FIXTURE - COORD. W/ DECOR AND OWNER
	TYPE P4 - ENERGYWISE LED A19 BULB (IN PENDANT FIXTURE AS SPECIFIED BY DECOR VENDOR) - COORD. W/ DECOR VENDOR.
	TYPE B - SCONCE LIGHTS - BESA LIGHT "TAMBURO" GARNET 704241-SN-LMPFL W/ GU-24 LAMP(S) NOTE: COORDINATE LOCATION AND QUANTITY WITH DECOR SUPPLIER. 6'-4" A.F.F. TO BOTTOM OF LIGHT.
	TYPE B-2L - CEILING MOUNTED PENDANT LIGHT - BESA LIGHTING - 1JT-169741-GU24-SN-BK-6-LL
	TYPE K - ENERGYWISE RECESSED MOUNT EXT. SOFFIT LIGHT - USE EXIST. SOFFIT CIRCUIT; VERIFY LOAD AND ELEC.
	WALL WASHER TO ILLUMINATE ART BY G.C.
	TYPE G - ENERGYWISE 2' X 4' LED LIGHT FIXTURE (TYP. U.N.O.)
	TYPE E - ENERGYWISE - 1' X 4' LED LIGHT FIXTURE
	TYPE G3 - ENERGYWISE 2' X 2' LED LIGHT FIXTURE
	TYPE G4 - ENERGYWISE 2' X 4' LED LIGHT FIXTURE (4000K)
	LOCATION OF EXISTING AND NEW TV'S - G.C. PROVIDE CABLE AND POWER AS REQUIRED. COORD. W/ DECOR AND OWNER
	2'X2' SUSPENDED ACOUSTICAL CEILING TILE AND GRID
	GYPSUM SOFFIT BOARD CEILING
	EMERGENCY LIGHTING
	EXTERIOR EMERGENCY LIGHT - DAMP RATED LED LIGHT WIRED TO SAME-CIRCUIT AS INTERIOR & PROVIDED W/ INTERNAL BATTERY BACKUP.
	NEW ELECTRICAL OUTLET PROVIDE PER INTERIORS PLAN.
	RECESSED LIGHT FIXTURE
	HVAC RETURN
	HVAC DIFFUSER
	PENDANT LIGHT, TYP. - SEE ID SHEETS

DATE	02/25/2018
CHECKED BY	MJL/MRW
REGION	
DRAWN BY	MJL/MRW
NO.	01
DATE	
NO.	02
DATE	
NO.	03
DATE	
NO.	04
DATE	
NO.	05
DATE	
NO.	06
DATE	
NO.	07



PREMIER KINGS, INC.
5529 CARMICHAEL RD
MONTGOMERY, AL 36117
PHONE (334) 312-0849

2126 Morris Avenue
Montgomery, AL 36103
Phone (205) 322-1251
Fax (205) 322-1778
email info@jhuha.com
www.jhuha.com

James M. Huxkestein
architect AIA
architecture • planning • interior design



PROJECT # 18024-21
IMAGE 09/20 - JULY 2012 STAIRCASES

BURGER KING
3580 CENTERVILLE HWY.
SNELLVILLE, GA 30039

REFLECTED CEILING PLAN