

GENERAL NOTES:

- IT IS THE RESPONSIBILITY OF THE CONTRACTOR TO OBTAIN QUALIFIED PROFESSIONAL ADVICE WHEN QUESTIONS ARISE CONCERNING DESIGN AND EFFECTIVENESS OF EROSION CONTROL DEVICES. 24 HR CONTACT: **LEE RODGERS, (334) 887-6064**.
- THE INSTALLATION OF EROSION CONTROL MEASURES AND PRACTICES SHALL TAKE PLACE PRIOR TO OR CONCURRENT WITH ALL LAND DISTURBING ACTIVITIES THROUGHOUT THE ENTIRE PROJECT.
- ANY AREA THAT HAS BEEN DISTURBED AND WILL REMAIN SO FOR MORE THAN 7 DAYS SHALL BE SEEDED AND MULCHED WITHIN 5 DAYS OF BEING DISTURBED.
- EROSION AND SEDIMENT CONTROL MEASURES WILL BE MAINTAINED AT ALL TIMES. IF FULL IMPLEMENTATION OF THE APPROVED PLAN DOES NOT PROVIDE FOR EFFECTIVE EROSION CONTROL, ADDITIONAL EROSION AND SEDIMENT CONTROL MEASURES SHALL BE IMPLEMENTED TO CONTROL OR TREAT THE SEDIMENT SOURCE.
- THE ESCAPE OF SEDIMENT FROM THE SITE SHALL BE PREVENTED BY THE INSTALLATION OF EROSION CONTROL MEASURES AND PRACTICES PRIOR TO, OR CONCURRENT WITH, ALL LAND DISTURBING ACTIVITIES THROUGHOUT THE ENTIRE PROJECT.
- SEDIMENT STORAGE INDICATORS MUST BE INSTALLED IN SEDIMENT STORAGE STRUCTURES, INDICATING THE 1/3 FULL VOLUME.
- WHEN SILT FENCES BECOME 1/4 FULL OF SEDIMENT, THE SEDIMENT MUST BE REMOVED.
- MAINTENANCE OF ALL SOIL EROSION AND SEDIMENTATION CONTROL MEASURES AND PRACTICES, WHETHER TEMPORARY OR PERMANENT, SHALL BE AT ALL TIMES THE RESPONSIBILITY OF THE PROPERTY OWNER.
- A 25-FOOT UNDISTURBED BUFFER IS TO BE MAINTAINED ADJACENT TO ALL STREAMS.
- TEMPORARY SEDIMENT POND FEATURES ARE TO BE CONSTRUCTED AND FULLY OPERATIONAL PRIOR TO ANY OTHER CONSTRUCTION.
- ALL FILL SLOPES SHALL HAVE SILT FENCE PLACED AT THE SLOPE'S TOE.
- CONCENTRATED FLOW AREAS AND ALL SLOPES GREATER THAN 3:1 SHALL BE STABILIZED WITH APPROPRIATE EROSION CONTROL MATTING.
- THE PROFESSIONAL WHO SEALS THIS PLAN CERTIFIES UNDER PENALTY OF LAW THAT THIS PLAN WAS PREPARED AFTER A SITE VISIT TO THE LOCATIONS DESCRIBED HEREIN BY THE PROFESSIONAL OR THE PROFESSIONAL'S AUTHORIZED AGENT, UNDER THE PROFESSIONAL'S DIRECT SUPERVISION.
- THE RECEIVING WATER IS A TRIBUTARY TO AN INTERMITTENT STREAM TO JENKINS CREEK.
- EROSION CONTROL DEVICES THAT ARE INSTALLED AS DIRECTED BY THE LAND DEVELOPMENT INSPECTOR BUT NOT SHOWN ON THE APPROVED PLAN AND WHICH ALSO SUBSEQUENTLY FAIL, ARE THE RESPONSIBILITY OF THE CONTRACTOR.
- ALL TEMPORARY AND PERMANENT SEEDING MUST BE PERFORMED AT THE APPROPRIATE SEASON. ADDITIONAL PLANTINGS WILL BE NECESSARY IF A SUFFICIENT STAND OF GRASS FAILS TO GROW.
- TOPSOIL SHALL BE STOCKPILED AND USED TO DRESS FINAL GRADES.
- THE CONTRACTOR IS REQUIRED TO PROVIDE ADEM REQUIRED INSPECTIONS BY A CERTIFIED PROFESSIONAL (OCI OR OCP) AND REPORTS AS OUTLINED IN THE NPDES NOTICE OF INTENT. THE CONTRACTOR SHALL MAINTAIN A RAINFALL LOG ON-SITE AND FURNISH ALL INSPECTION REPORTS TO THE ENGINEER AT THE END OF THE PROJECT FOR THE NOTICE OF INTENT AS REQUIRED BY THE ALABAMA DEPARTMENT OF ENVIRONMENTAL MANAGEMENT (ADEM).
- NO PORTION OF THIS PROPERTY LIES WITHIN A SPECIAL FLOOD HAZARD AREA PER PANEL 01101C0232H DATED 02/05/2014.
- THE CONTRACTOR WILL CLEAN OUT ACCUMULATED SILT IN THE STORM DRAINAGE PIPES AT THE END OF CONSTRUCTION WHEN DISTURBED AREAS HAVE BEEN STABILIZED.
- MULCH OR TEMPORARY GRASSING SHALL BE APPLIED TO ALL EXPOSED AREAS WITHIN SEVEN DAYS OF DISTURBANCE.
- ALL CONSTRUCTION SHALL COMPLY WITH THE SPECIFICATIONS AND PROCEDURES DETAILED IN THE CURRENT DEVELOPMENT REGULATIONS OF THE CITY OF MONTGOMERY AND THE PUBLICATION: EROSION CONTROL, SEDIMENT AND STORM WATER MANAGEMENT ON CONSTRUCTION SITES AND URBAN AREAS.
- TWO ROWS OF TYPE A SILT FENCE SHALL BE INSTALLED ADJACENT TO STATE WATERS AND WILL PROTECT STATE WATERS FROM ANY LAND DISTURBING ACTIVITIES.
- GRASSING REQUIRED AT A MINIMUM OF EVERY (SEVEN) DAYS OR AS DIRECTED BY QUALIFIED PERSONNEL.
- THE USE OF PAM, FLOC LOGS, TURBIDITY CURTAINS, OR OTHER FLOCCULATES IS REQUIRED PRIOR TO DISCHARGING TO STREAMS.
- THE PROPOSED DEVELOPMENT CONSISTS OF A 30,994 SF 2-STORY SELF STORAGE DEVELOPMENT AND PARKING LOT.
- ADDITIONAL BMPs MAY BE REQUIRED BY THE OCP AND/OR CITY OF MONTGOMERY OVER THE COURSE OF THE PROJECT TO MINIMIZE SEDIMENT RELEASE FROM THE SITE.
- ALL BMPs SHALL BE DESIGNED AND INSTALLED IN ACCORDANCE WITH THE ALABAMA HANDBOOK FOR EROSION CONTROL, SEDIMENT CONTROL, AND STORM WATER MANAGEMENT ON CONSTRUCTION SITES AND URBAN AREAS AND THE CITY OF MONTGOMERY STANDARD EROSION AND SEDIMENT CONTROL DETAILS.
- CONTRACTOR SHALL HAVE ALL BMPs SHOWN ON THE INITIAL EROSION CONTROL PLAN INSTALLED AND APPROVED BY THE CITY OF MONTGOMERY INSPECTOR PRIOR TO ANY MASS CLEARING OR GRADING OPERATIONS. THE CITY OF MONTGOMERY WILL ISSUE A CLEARING AND GRUBBING PERMIT ONLY AT THE PRE-CONSTRUCTION CONFERENCE. IN ORDER TO INSTALL THE INITIAL BMPs, ONCE THE BMPs ARE INSPECTED AND APPROVED BY THE CITY, A GRADING PERMIT WILL THEN BE ISSUED.
- THE CONTRACTOR IS RESPONSIBLE FOR MEETING THE REQUIREMENTS OF THE ALABAMA DEPARTMENT OF ENVIRONMENTAL MANAGEMENT (ADEM) ADMIN. CODE 336-6 (VOLUME 1). CONTRACTOR IS FULLY RESPONSIBLE FOR MEETING THE FOLLOWING REQUIREMENTS INCLUDING BUT NOT LIMITED TO THE FOLLOWING:

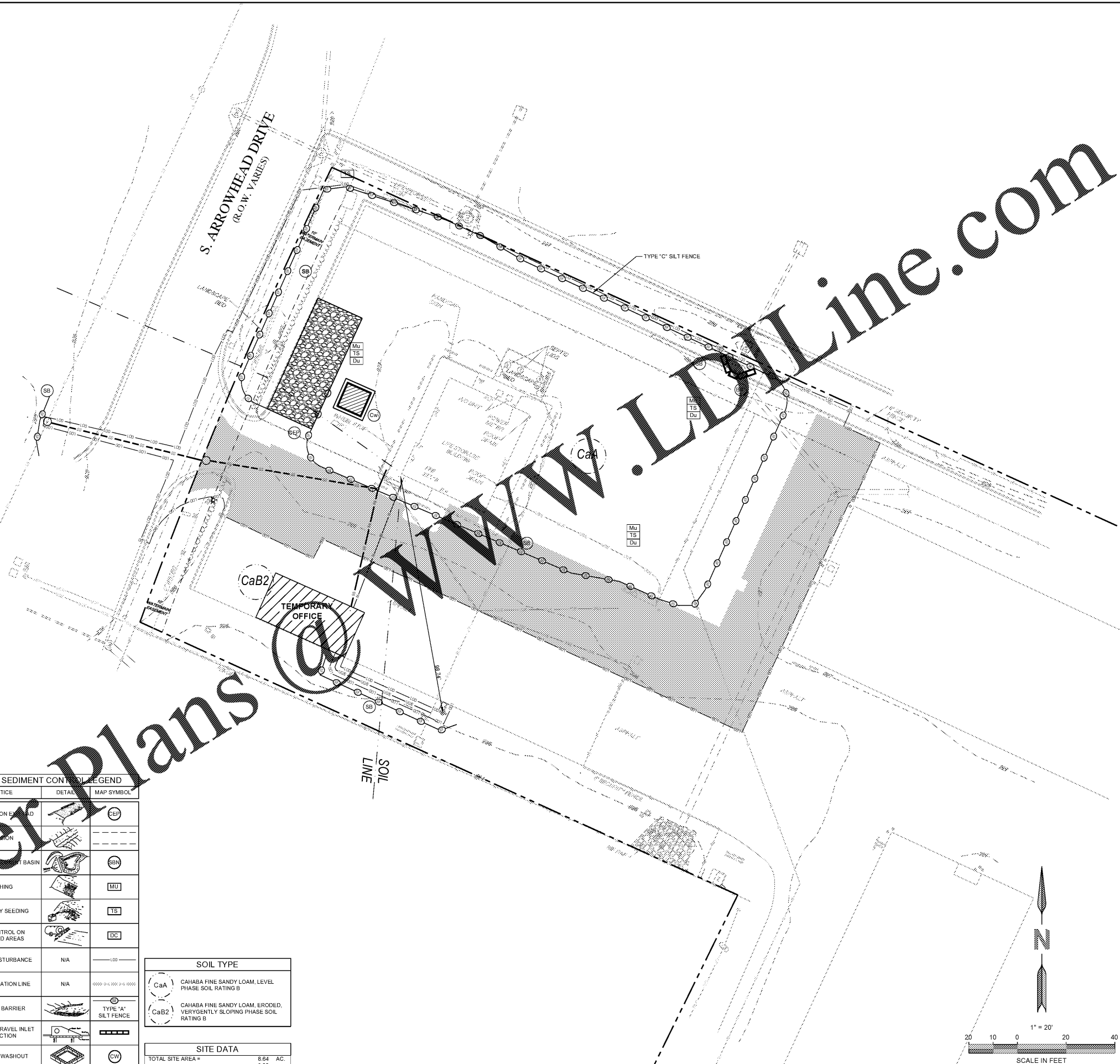
- DUTY TO MITIGATE ADVERSE IMPACTS
- DISCHARGES CANNOT VIOLATE WATER QUALITY STANDARDS
- CONSTRUCTION BEST MANAGEMENT PRACTICES (CBMP) MAINTAINED ON SITE BY A QUALIFIED CREDENTIALLED PROFESSIONAL (OCI OR OCP)
- EFFECTIVE EROSION AND SEDIMENT CONTROL MEASURES IMPLEMENTED AT ALL TIMES
- REGULAR COMPREHENSIVE INSPECTIONS OF SITE AND DOWNSTREAM CHANNEL
- COPIES OF INSPECTION REPORTS MAINTAINED
- DETAILED LOGS MAINTAINED
- SPILL AND CHEMICAL CONTROLS IMPLEMENTED- STORM WATER POLLUTION CONTROL PLAN AND MATERIAL SAFETY DATA SHEETS.
- CANNOT DISCHARGE OTHER POLLUTANTS OR WASTES
- THE NOTICE OF INTENT ID AND A RAIN GAUGE SHALL BE INSTALLED AND VISIBLE ON-SITE FROM THE RIGHT OF WAY.

- SEDIMENT REMOVED FROM BMPs (SEDIMENT BASINS, SEDIMENT TRAPS, SILT FENCES, ETC.) IS TO BE STOCKPILED ON-SITE. PERMITTEE WILL INSTALL APPROPRIATE SEDIMENT BARRIERS AROUND STOCKPILE. SEDIMENT FROM STOCKPILE WILL BE USED TO ADDRESS GRADES OR BE HAULED OFF-SITE.
- PROJECT DESCRIPTION: THE PROJECT INVOLVES THE REMOVAL OF AN EXISTING SELF-STORAGE FACILITY OFFICE, ASSOCIATED PARKING AND UTILITIES AND THE CONSTRUCTION OF A NEW SELF-STORAGE FACILITY/OFFICE COMBINATION.

EROSION AND SEDIMENT CONTROL LEGEND			
CODE	PRACTICE	DETAIL	MAP SYMBOL
CEP	CONSTRUCTION EXPOSED		CEP
DV	DIVERSION		DV
SB	SEDIMENT BARRIER		SB
MU	MULCHING		MU
TS	TEMPORARY SEEDING		TS
DC	DUST CONTROL ON DISTURBED AREAS		DC
	LIMITS OF DISTURBANCE	N/A	---
	SOIL DELINEATION LINE	N/A	-----
SB	SEDIMENT BARRIER		TYPE "A" SILT FENCE
BIP	BLOCK AND GRAVEL INLET PROTECTION		BIP
CW	CONCRETE WASHOUT		CW

SOIL TYPE	
CaA	CAHABA FINE SANDY LOAM, LEVEL PHASE SOIL RATING B
CaB2	CAHABA FINE SANDY LOAM, ERODED, VERY GENTLY SLOPING PHASE SOIL RATING B

SITE DATA	
TOTAL SITE AREA *	8.64 AC.
TOTAL DISTURBED AREA **	9.83 AC.



Order Plans



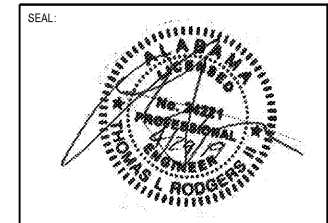
ENGINEER:
FORESITE
 group
 Foresite Group, Inc.
 2128 Moores Mill Rd. | 334.887.6064
 Suite C | 334.887.6024
 Auburn, AL 36830 | www.fg-inc.net

DEVELOPER:

 LIFE STORAGE
 6467 MAIN STREET
 WILLIAMSVILLE, NY 14221
 CONTACT: ROBERT FISHER

PROJECT:

LIFE STORAGE #357
 115 SOUTH ARROWHEAD DRIVE
 MONTGOMERY, AL



REVISIONS	DATE
SD PLANS	04/22/2019

PROJECT MANAGER: TLR
 DRAWING BY: JFG
 JURISDICTION: MONTGOMERY, AL
 DATE: 04/29/2019
 SCALE: 1" = 20'
 TITLE:

INITIAL EROSION & SEDIMENT CONTROL PLAN
 SHEET NUMBER: **C-4**

COMMENTS: RELEASED FOR CONSTRUCTION
 JOB/FILE NUMBER: 1208.002

