



THESE DRAWINGS AND DESIGNS ARE THE PROPERTY OF PROFICIENT ENGINEERING, INC. AND SHALL NOT BE REPRODUCED, COPIED, OR TRANSMITTED IN ANY FORM OR BY ANY MEANS, ELECTRONIC OR MECHANICAL, WITHOUT THE WRITTEN PERMISSION OF PROFICIENT ENGINEERING, INC. ANY REUSE OF THESE DRAWINGS WITHOUT THE WRITTEN PERMISSION OF PROFICIENT ENGINEERING, INC. IS STRICTLY PROHIBITED. ALL DIMENSIONS MUST BE VERIFIED BY THE CONTRACTOR AND DISCREPANCIES BEFORE PROCEEDING WITH CONSTRUCTION. THIS DRAWING IS TO BE USED IN CONJUNCTION WITH THE PROJECT MANUAL AND SHALL NOT BE USED AS A SUBSTITUTE THEREFOR.

Life Storage #357

115 S. Arrowhead Dr.
Montgomery, AL 36117



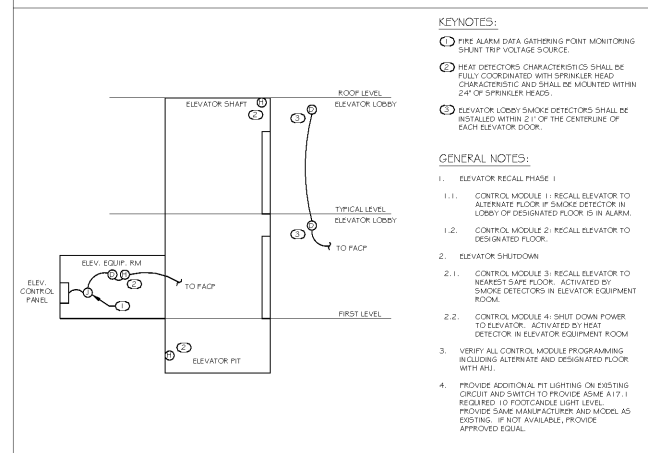
ISSUE FOR CONSTRUCTION REVISIONS:

PROJECT NUMBER
201841
DATE
4-8-2019

SHEET NUMBER

E2.1

ELEVATOR RISER DIAGRAM



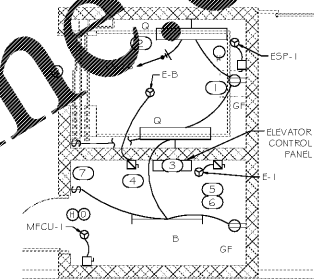
- KEYNOTES:**
1. FIRE ALARM DATA GATHERING POINT MONITORING SHUNT TRIP VOLTAGE SOURCE.
 2. HEAT DETECTORS CHARACTERISTICS SHALL BE FULLY COORDINATED WITH SPRINKLER HEAD CHARACTERISTICS AND SHALL BE MOUNTED WITHIN 24" OF SPRINKLER HEADS.
 3. ELEVATOR LOBBY SMOKE DETECTORS SHALL BE INSTALLED WITHIN 2' OF THE CENTERLINE OF EACH ELEVATOR DOOR.
- GENERAL NOTES:**
1. ELEVATOR RECALL PHASE 1
 - 1.1. CONTROL MODULE 1: RECALL ELEVATOR TO ALTERNATE FLOOR IF SMOKE DETECTOR IN LOBBY OF DESIGNATED FLOOR IS IN ALARM.
 - 1.2. CONTROL MODULE 2: RECALL ELEVATOR TO DESIGNATED FLOOR.
 2. ELEVATOR SHUTDOWN
 - 2.1. CONTROL MODULE 3: RECALL ELEVATOR TO NEAREST SAFE FLOOR. ACTIVATED BY SMOKE DETECTORS IN ELEVATOR EQUIPMENT ROOM.
 - 2.2. CONTROL MODULE 4: SHUT DOWN POWER TO ELEVATOR. ACTIVATED BY HEAT DETECTOR IN ELEVATOR EQUIPMENT ROOM WITH AHU.
 3. VERIFY ALL CONTROL MODULE PROGRAMMING INCLUDING ALTERNATE AND DESIGNATED FLOOR WITH AHU.
 4. PROVIDE ADDITIONAL FIT LIGHTING ON EXISTING CIRCUIT AND SWITCH TO PROVIDE ASHRAE A17.1 REQUIRED 10 FOOTCANDLE LIGHT LEVEL. PROVIDE SINK MANUFACTURER AND MODEL AS EXISTING. IF NOT AVAILABLE, PROVIDE APPROVED EQUAL.

GENERAL NOTES

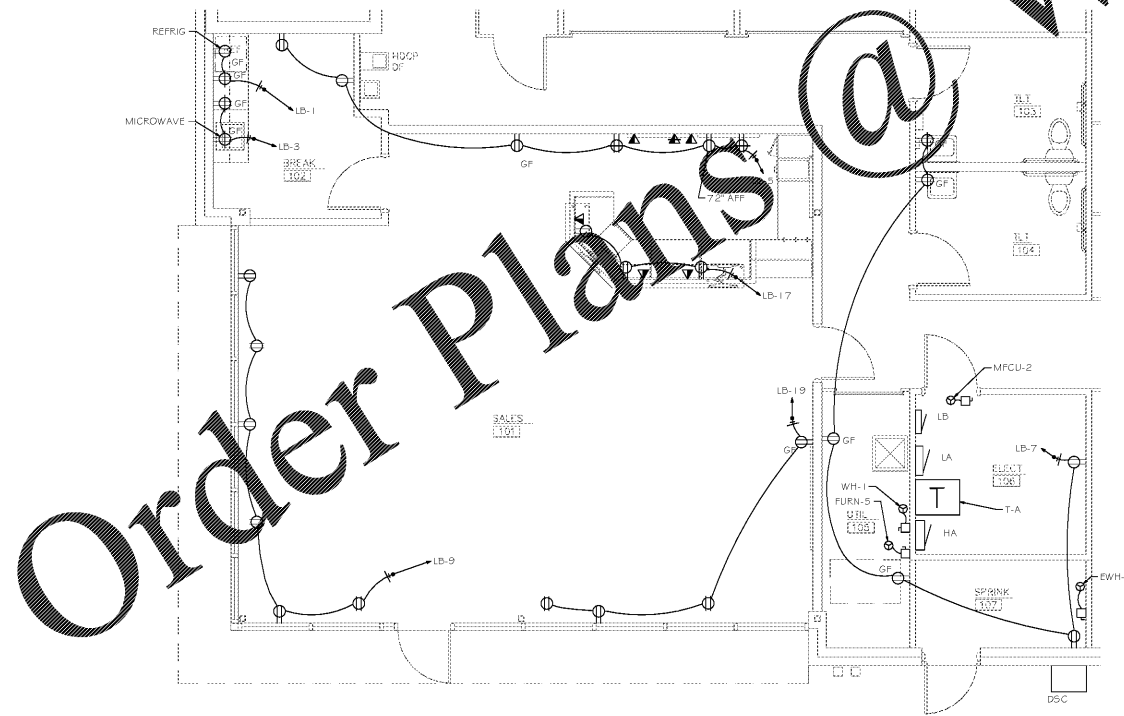
REFER TO ARCHITECTURAL REFLECTED CEILING PLAN FOR EXACT LOCATIONS OF ALL CEILING MOUNTED DEVICES.
PROVIDE UNSWITCHED HOT LEG OF CIRCUIT TO EMERGENCY LIGHTING AND EXIT SIGNS.
FIXTURES NOT INDICATED TO BE CONTROLLED BY OCCUPANCY SENSORS SHALL BE CONNECTED TO LIGHTING CONTROL PANEL AND SHALL BE TIME CLOCK CONTROLLED.

KEYNOTES

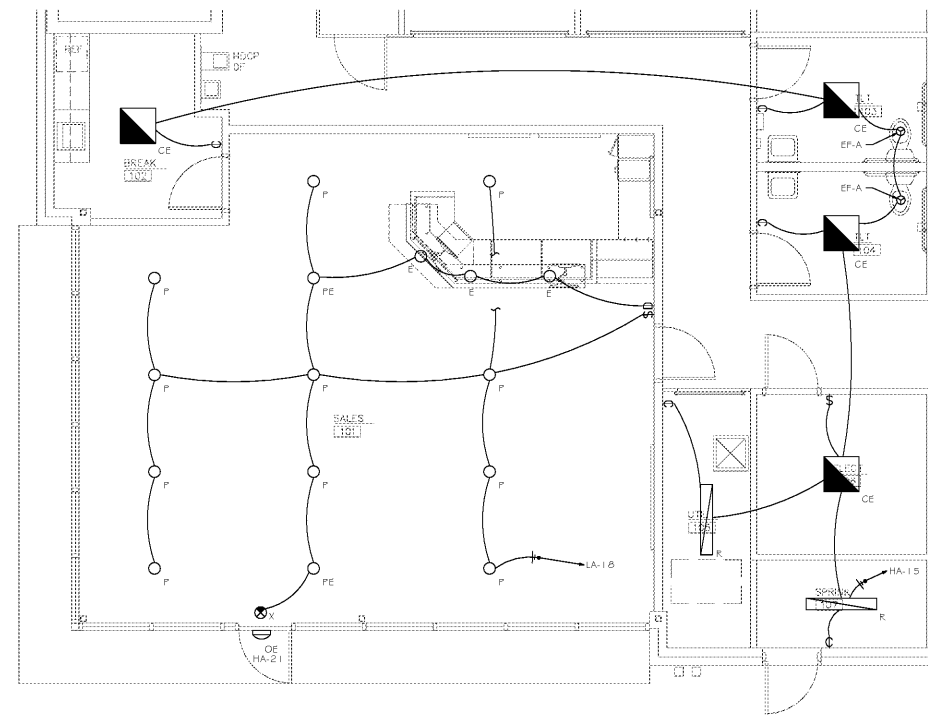
1. GFCI DUPLEX RECEPTACLE. PROVIDE ONE AT THE PIT AND ANOTHER AT THE TOP OF THE SHAFT.
2. LIGHTING SHALL NOT BE CONNECTED TO LOAD SIDE OF GFCI RECEPTACLE. PROVIDE LIGHTING FIXTURES AT THE PIT AND AT THE TOP OF THE SHAFT.
3. SHUNT TRIP TO BE LOCATED INSIDE ELEVATOR CONTROL PANEL. SEE ELEVATOR RISER DIAGRAM.
4. 30A V1 F1NEMA 1 DISCONNECT SWITCH FOR ELEVATOR CAB LIGHTING AND FAN.
5. 8P BUSSMANN POWER MODULE SWITCH W/CONTROL POWER VFMR. KEY TO TEST SWITCH, PILOT LIGHT 'ON', AUXILIARY CONTACTS (1 N.O., 1 N.C.) ELEVATOR MOTOR. COORDINATE WITH ELEVATOR MANUFACTURER FOR FINAL RECOMMENDED FUSE SIZE.
6. 100A/3F1NEMA 4X EQUIPMENT DISCONNECT SWITCH FOR ELEVATOR MOTOR.
7. PROVIDE LIGHT SWITCHES AT PIT LEVEL AND AT TOP OF THE SHAFT. EACH SWITCH SHALL CONTROL EACH RESPECTIVE LIGHT FIXTURE.
8. EXHAUST FAN TO BE CONTROLLED WITH LIGHT SWITCH.



3 ENLARGED ELEVATOR PLAN
SCALE: 1/4"=1'-0"



2 ENLARGED FLOOR PLAN - OFFICE
SCALE: 1/4"=1'-0"



1 ENLARGED LIGHTING PLAN - OFFICE
SCALE: 1/4"=1'-0"

WWW.LDILine.com