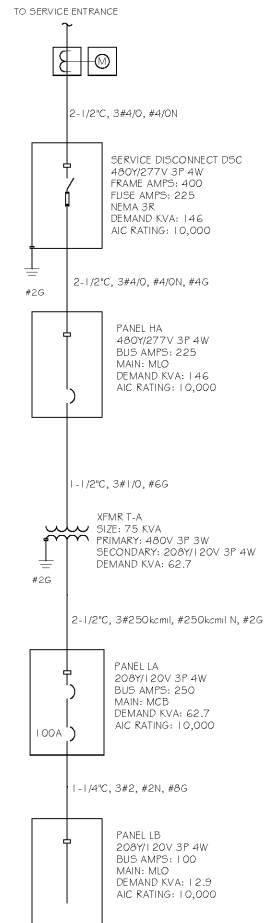
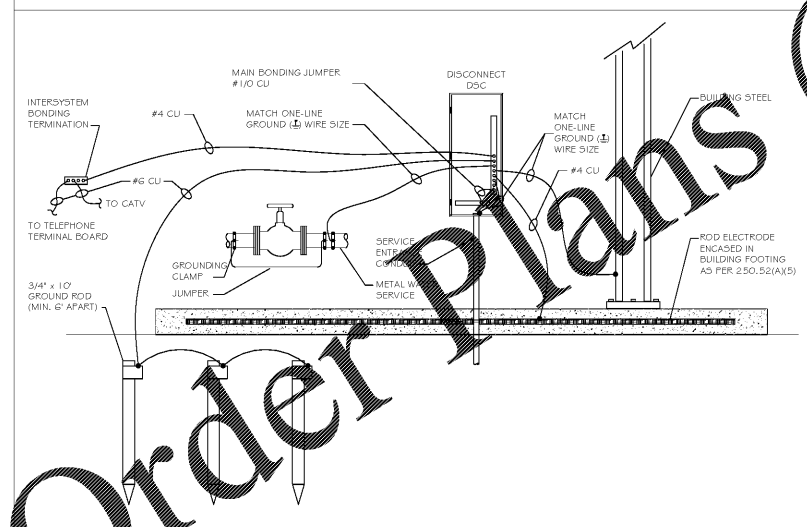


ONE-LINE DIAGRAM



GROUNDING AND BONDING DETAIL



Order Plans

Panel HA

ROOM	MOUNTING SURFACE	VOLTS	480Y/277V 3P 4W	AIC	10,000		
FED FROM	DSC	NEUTRAL	100%	MAIN BKR	MLO		
NOTE							
CKT #	CKT BKR	LOAD KVA	CIRCUIT DESCRIPTION	CKT #	CKT BKR	LOAD KVA	CIRCUIT DESCRIPTION
1	125/3	59.5	XFMR T-A	2	20/1	0.0	SPACE
3				4	20/1	0.0	SPACE
5				6	20/1	0.0	SPACE
7	90/3	54.0	ELEVATOR	8	20/1	0.0	SPACE
9				10	20/1	0.0	SPACE
11				12	20/1	0.0	SPACE
13	20/1	3.0	EWHA	14	20/1	0.0	SPACE
15	20/1	0.4	EF-A LIGHTING	16	20/1	0.0	SPACE
17	25/1	1.5	EWHA	18	20/1	0.0	SPACE
19	20/1	3.0	EWHA	20	20/1	0.0	SPACE
21	20/1	0.5	LIGHTING	22	20/1	0.0	SPACE
23	20/1	3.2	LIGHTING	24	20/1	0.0	SPACE
25	20/1	0.5	LIGHTING	26	20/1	0.0	SPACE
27	20/1	0.1	LIGHTING	28	20/1	0.0	SPACE
29	20/1	0.1	LIGHTING	30	20/1	0.0	SPACE
31	20/1	2.9	LIGHTING	32	20/1	0.0	SPACE
33	20/1	0.0	SPACE	34	20/1	0.0	SPACE
35	20/1	0.0	SPACE	36	20/1	0.0	SPACE
37	20/1	0.0	SPACE	38	20/1	0.0	SPACE
39	20/1	0.0	SPACE	40	20/1	0.0	SPACE
41	20/1	0.0	SPACE	42	20/1	0.0	SPACE
CONN KVA		CALC KVA	(125%)	CONN KVA		CALC KVA	(100%)
LIGHTING		11.3	14.1	KITCHEN EQUIPMENT		1.2	1.2
LARGEST MOTOR		54.0	13.5	CONTINUOUS		3.0	3.8
MOTORS		95.8	95.8	NONCONTINUOUS		2.1	2.1
RECEPTACLES		7.9	7.9	HEATING		7.5	7.5
TOTAL LOAD		145.9		BALANCED 3-PHASE AMPS		175.5	
PHASE A		112%		PHASE B		92.1%	
PHASE C		95.6%		PHASE C		95.6%	

Panel LA

ROOM	MOUNTING SURFACE	VOLTS	208Y/120V 3P 4W	AIC	10,000		
FED FROM	T-A	NEUTRAL	100%	MAIN BKR	250		
NOTE							
CKT #	CKT BKR	LOAD KVA	CIRCUIT DESCRIPTION	CKT #	CKT BKR	LOAD KVA	CIRCUIT DESCRIPTION
1	35/2	4.3	CU-1	2	20/1	0.0	SPACE
3				4	20/1	0.0	SPACE
5	40/2	5.7	CU-3	6	20/1	0.1	SPACE
7				8	20/2	1.2	SPACE
9	35/2	4.3	CU-5	10	20/1	0.0	SPACE
11				12	20/2	3.0	SPACE
13	35/2	4.3	CU-2	14			
15				16	20/1	0.5	LIGHTING RECEPTACLE
17	40/2	5.7	CU-4	18	20/1	0.5	LIGHTING RECEPTACLE
19				20	20/1	0.3	LIGHTING
21	20/2	2.9	MFCU-1, MHP-1	22	20/1	0.3	LIGHTING
23				24	20/1	0.0	SPACE
25	20/2	2.9	MFCU-2, MHP-2	26	20/1	0.0	RECEPTACLE
27				28	20/1	1.2	RECEPTACLE
29	20/1	1.7	FURN-2	30	20/1	0.9	SIGNAGE
31	20/1	1.7	FURN-3	32	20/1	0.0	SPACE
33	20/1	1.7	FURN-4	34	20/1	0.0	SPACE
35	20/1	1.7	FURN-5	36	20/1	0.0	SPACE
37	20/1	1.7	FURN-5	38	100/3	12.6	PANEL LB
39	20/1	0.0	SPACE	40			
41	20/1	0.0	SPACE	42			
CONN KVA		CALC KVA	(125%)	CONN KVA		CALC KVA	(100%)
LIGHTING		3.8	4.7	RECEPTACLES		7.9	7.9
LARGEST MOTOR		5.7	1.4	KITCHEN EQUIPMENT		1.2	1.2
MOTORS		41.6	41.6	CONTINUOUS		3.0	3.8
TOTAL LOAD		62.7		NONCONTINUOUS		2.1	2.1
BALANCED 3-PHASE AMPS		173.9		PHASE A		116%	
PHASE B		91%		PHASE B		91%	
PHASE C		99.1%		PHASE C		99.1%	

Panel LB

ROOM	MOUNTING SURFACE	VOLTS	208Y/120V 3P 4W	AIC	10,000		
FED FROM	LA	NEUTRAL	100%	MAIN BKR	100		
NOTE							
CKT #	CKT BKR	LOAD KVA	CIRCUIT DESCRIPTION	CKT #	CKT BKR	LOAD KVA	CIRCUIT DESCRIPTION
1	20/1	1.4	RECEPTACLE, REFRIGERATOR	2	20/1	0.0	SPACE
3	20/1	1.7	MICROWAVE, RECEPTACLE	4	20/1	0.0	SPACE
5	20/1	1.1	RECEPTACLE	6	20/1	0.0	SPACE
7	20/1	1.1	RECEPTACLE	8	20/1	0.0	SPACE
9	20/1	1.1	RECEPTACLE	10	20/1	0.0	SPACE
11	20/1	1.1	RECEPTACLE, WATER COOLER	12	20/1	0.0	SPACE
13	20/1	0.4	KEYPAD, RECEPTACLE	14	20/1	0.0	SPACE
15	20/1	0.5	RECEPTACLE	16	20/1	0.0	SPACE
17	20/1	0.5	RECEPTACLE	18	20/1	0.0	SPACE
19	20/1	0.7	RECEPTACLE	20	20/1	0.0	SPACE
21	20/1	1.2	SIGNAGE	22	20/1	0.0	SPACE
23	20/1	0.4	MOTORIZED DOOR	24	20/1	0.0	SPACE
25	20/1	0.7	MOTORIZED DOOR	26	20/1	0.0	SPACE
27	20/1	0.7	MOTORIZED DOOR	28	20/1	0.0	SPACE
29	20/1	0.0	SPACE	30	20/1	0.0	SPACE
31	20/1	0.0	SPACE	32	20/1	0.0	SPACE
33	20/1	0.0	SPACE	34	20/1	0.0	SPACE
35	20/1	0.0	SPACE	36	20/1	0.0	SPACE
37	20/1	0.0	SPACE	38	20/1	0.0	SPACE
39	20/1	0.0	SPACE	40	20/1	0.0	SPACE
41	20/1	0.0	SPACE	42	20/1	0.0	SPACE
CONN KVA		CALC KVA	(125%)	CONN KVA		CALC KVA	(100%)
LIGHTING		1.2	1.5	RECEPTACLES		6.3	6.3
LARGEST MOTOR		0.2	0.0	KITCHEN EQUIPMENT		1.2	1.2
MOTORS		1.8	1.8	CONTINUOUS		2.1	2.1
TOTAL LOAD		12.9		NONCONTINUOUS		2.1	2.1
BALANCED 3-PHASE AMPS		35.9		PHASE A		101%	
PHASE B		124%		PHASE B		124%	
PHASE C		74.8%		PHASE C		74.8%	

GENERAL SCHEDULE

CALLOUT	SYMBOL	VOLTS	KVA	CIRCUIT	WIRE CALLOUT	DISCONNECT DESCRIPTION
CU-1	[Symbol]	208Y/120V 2P 3W	4.35	LA-1,3	3/4" C, 2#8, #8N, #6G	60/2P/NEMA 3R
CU-2	[Symbol]	208Y/120V 2P 3W	4.35	LA-1,3,15	3/4" C, 2#8, #8N, #6G	60/2P/NEMA 3R
CU-3	[Symbol]	208Y/120V 2P 3W	5.72	LA-5,7	3/4" C, 2#8, #8N, #10G	60/2P/NEMA 3R
CU-4	[Symbol]	208Y/120V 2P 3W	5.72	LA-17,19	3/4" C, 2#8, #8N, #10G	60/2P/NEMA 3R
CU-5	[Symbol]	208Y/120V 2P 3W	4.35	LA-9,11	3/4" C, 2#8, #8N, #6G	60/2P/NEMA 3R
E-1	[Symbol]	480V 3P 4W	54.04	HA-7,9,11	1-1/4" C, 3#2, #2N, #8G	100A/3P/NEMA 4X/90
E-B	[Symbol]	120V 1P 2W	0.1	LA-6	1/2" C, 1#12, #12N, #12S	30A/1P/NEMA 4X
EF-A	[Symbol]	277V 1P 2W	0.1	HA-15	1/2" C, 1#12, #12N, #12S	30/2P/NEMA
EF-A	[Symbol]	277V 1P 2W	0.1	HA-15	1/2" C, 1#12, #12N, #12S	30/2P/NEMA
ESP-1	[Symbol]	208Y/120V 2P 3W	1.18	LA-8,10	1/2" C, 2#12, #12N, #12S	30A/2P/NEMA
EWHA	[Symbol]	277V 1P 2W	1.5	HA-17	1/2" C, 1#12, #12N, #12S	30/1P/NEMA
EWHA	[Symbol]	277V 1P 2W	3	HA-13	1/2" C, 1#12, #12N, #12S	30/1P/NEMA
EWHA	[Symbol]	277V 1P 2W	3	HA-19	1/2" C, 1#12, #12N, #12S	30/1P/NEMA
FURN-1	[Symbol]	120V 1P 2W	1.66	LA-31	1/2" C, 1#12, #12N, #12S	30/1P/NEMA
FURN-2	[Symbol]	120V 1P 2W	1.66	LA-29	1/2" C, 1#12, #12N, #12S	30/1P/NEMA
FURN-3	[Symbol]	120V 1P 2W	1.66	LA-35	1/2" C, 1#12, #12N, #12S	30/1P/NEMA
FURN-4	[Symbol]	120V 1P 2W	1.66	LA-35	1/2" C, 1#12, #12N, #12S	30/1P/NEMA
FURN-5	[Symbol]	120V 1P 2W	1.66	LA-35	1/2" C, 1#12, #12N, #12S	30/1P/NEMA
MFCU-1	[Symbol]	208Y/120V 2P 3W	2.9	LA-2,21	1/2" C, 2#12, #12N, #12S	30/2P/NEMA
MFCU-2	[Symbol]	208Y/120V 2P 3W	2.9	LA-2,21	1/2" C, 2#12, #12N, #12S	30/2P/NEMA
MHP-1	[Symbol]	208Y/120V 2P 3W	2.7	LA-2,21	1/2" C, 2#12, #12N, #12S	30/2P/NEMA
MHP-2	[Symbol]	208Y/120V 2P 3W	2.7	LA-2,21	1/2" C, 2#12, #12N, #12S	30/2P/NEMA
WH-1	[Symbol]	208Y/120V 2P 3W	1.14	LA-12,14	1/2" C, 2#12, #12N, #12S	30/2P/NEMA

STORAGE LUMINAIRE SCHEDULE

CALLOUT	SYMBOL	LAMP	DESCRIPTION	MODEL	VOLTS
A	[Symbol]	(1) 42W LED	4" STRIP WITH INTEGRAL OCCUPANCY SENSOR AND WIREGUARD	COLUMBIA LCL-4-50-ML-E-U-LCLWG4	277V 1P 2W
AE	[Symbol]	(1) 42W LED	4" STRIP WITH EMERGENCY BALLAST AND WIREGUARD	COLUMBIA LCL-4-50-ML-E-U-ELL14-LCLWG4	277V 1P 2W
C	[Symbol]	(1) 42W LED	4" LED STRIP	COLUMBIA LCL-4-40-ML-E-U	120V 1P 2W
CE	[Symbol]	(1) 31W LED	2x2 DIRECT/INDIRECT FIXTURE W/ BATTERY BACKUP	COLUMBIA LCL-4-40-ML-G-C-E-U-ELL14	277V 1P 2W
E	[Symbol]	(1) 30W LED	SURFACE MOUNTED PENDANT LED DELRAY	DELRAY RFGC	120V 1P 2W
EA	[Symbol]	(1) 73W LED	EXTERIOR WALL PACK WHITE COLOR	LITHONIA DSXW2 LED 20C 1000 30K ASYDF MVOLT DWHKD	277V 1P 2W
OE	[Symbol]	(1) 36W LED	EXTERIOR WALL PACK W/ BATTERY BACKUP WHITE COLOR	LITHONIA DSXW2 LED 20C 550 30K ASYDF MVOLT DWHKD	277V 1P 2W
F	[Symbol]	(1) 31W LED	LOWBAY LED SURFACE MOUNTED	DELRAY AL2387 X X XXX	120V 1P 2W
FE	[Symbol]	(1) 31W LED	LOWBAY LED SURFACE MOUNTED W/ BATTERY BACKUP	DELRAY AL2387 X X XXX EM	120V 1P 2W
Q	[Symbol]	(1) 36W LED	ELEVATOR PIT LIGHT	TEXAS FLUORESCENT - #CITE 24LRH 36W/500LBDMV40KEM	120V 1P 2W
R	[Symbol]	(1) 41W LED	LED LOW-PROFILE WRAPAROUND	LITHONIA LBL4-40L-E1-LP840	277V 1P 2W
S	[Symbol]	(1) 20W LED	WALL MOUNTED LED W/ BATTERY BACKUP	COLUMBIA LCL-4-50-ML-E-U-ELL14-LCLWG4	277V 1P 2W
X	[Symbol]	(1) 5W LED	THERMOPLASTIC EXIT SIGN WITH BATTERY	COMPAS #CER	120V 1P 2W



THESE DRAWINGS AND DESIGNS ARE THE PROPERTY OF STANARD ARCHITECTURE, INC. AND SHALL NOT BE REPRODUCED OR TRANSMITTED IN ANY FORM OR BY ANY MEANS, ELECTRONIC OR MECHANICAL, INCLUDING PHOTOCOPYING, RECORDING, OR BY ANY INFORMATION STORAGE AND RETRIEVAL SYSTEM, WITHOUT THE WRITTEN PERMISSION OF STANARD ARCHITECTURE, INC. THESE DRAWINGS ARE NOT TO BE USED FOR CONSTRUCTION OF ANY PROJECT WITHOUT THE WRITTEN PERMISSION OF STANARD ARCHITECTURE, INC. ALL DIMENSIONS MUST BE VERIFIED BY THE CONTRACTOR AND DISCREPANCIES BEFORE PROCEEDING WITH CONSTRUCTION. DO NOT SCALE DRAWINGS.

Life Storage #357  
115 S. Arrowhead Dr.  
Montgomery, AL 36117

