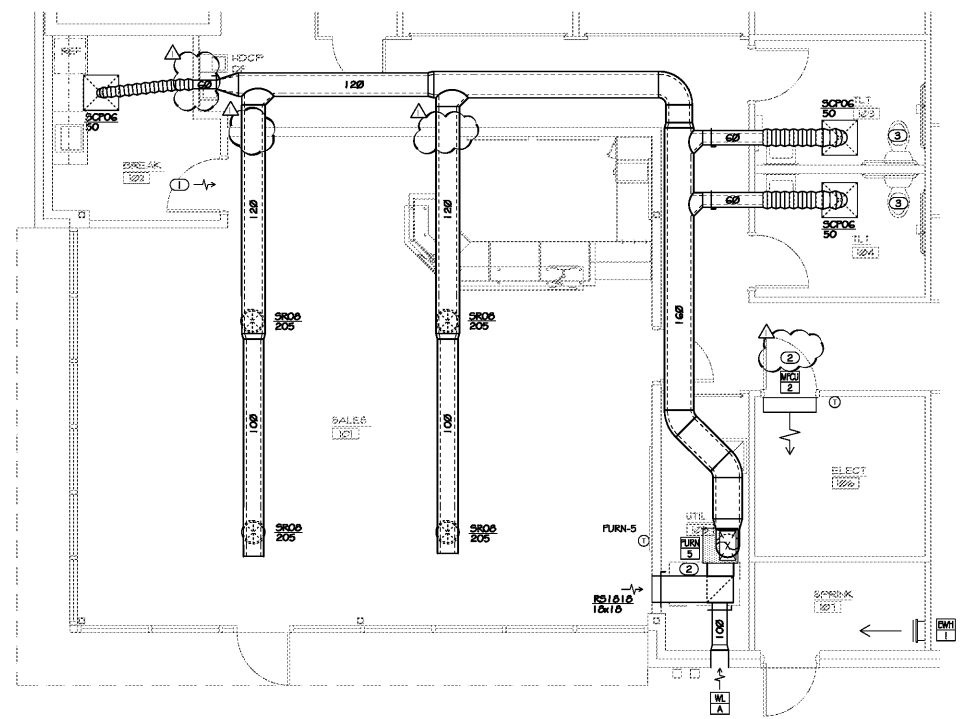
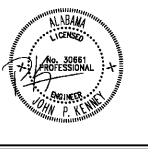


Order Plans @ [www.LDILine.com](http://www.LDILine.com)

- GENERAL NOTES**
- EACH SUPPLY DIFFUSER/REGISTER RUNOUT SHALL BE PROVIDED WITH A VOLUME DAMPER. REFER TO THE DIFFUSER TAKE-OFF DETAIL FOR ADDITIONAL INFORMATION.
  - DRAWINGS ARE DIAGRAMMATIC ONLY; FINAL ROUTING OF DUCTWORK AND EQUIPMENT LOCATIONS SHALL BE DETERMINED IN THE FIELD. ADDITIONAL OFFSETS, ELBOWS, ETC. SHALL BE PROVIDED AND INSTALLED WITHOUT ADDITIONAL COST TO THE OWNER.
  - COORDINATE LOUVER LOCATIONS WITH ARCHITECTURAL ELEVATIONS.
- KEYNOTES**
- 3/4" DOOR UNDERCUT.
  - TRAP & ROUTE 1" DIAMETER CONDENSATE DRAIN LINE TO MAIN DRAIN.
  - SEE M.I. 1 FOR RESTROOM EQUIPMENT.

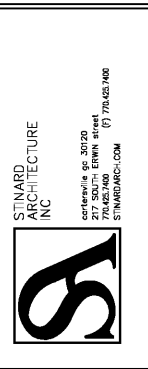


1 OFFICE FLOOR PLAN  
SCALE: 1/4" = 1'-0"



THESE DRAWINGS AND DESIGNS ARE THE PROPERTY OF PROFICIENT ENGINEERING, INC. AND SHALL NOT BE REPRODUCED, COPIED, OR TRANSMITTED IN ANY FORM OR BY ANY MEANS, ELECTRONIC OR MECHANICAL, WITHOUT THE WRITTEN PERMISSION OF PROFICIENT ENGINEERING, INC. THESE DRAWINGS AND DESIGNS ARE NOT TO BE USED FOR ANY OTHER PROJECT WITHOUT THE WRITTEN PERMISSION OF PROFICIENT ENGINEERING, INC. ALL DIMENSIONS MUST BE VERIFIED BY THE CONTRACTOR AND DISCREPANCIES BEFORE PROCEEDING WITH CONSTRUCTION. DO NOT SCALE DRAWINGS.

Life Storage #357  
115 S. Arrowhead Dr.  
Montgomery, AL 36117



ISSUE FOR CONSTRUCTION REVISIONS:

NO.	DESCRIPTION	DATE
1	City Comments	5-6-2019

PROJECT NUMBER: 201841  
DATE: 4-8-2019

SHEET NUMBER: M2.1