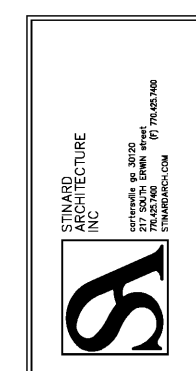


THESE DRAWINGS AND ANY INFORMATION CONTAINED HEREIN ARE THE PROPERTY OF STANARD ARCHITECTURE, INC. AND SHALL NOT BE REPRODUCED, COPIED, OR TRANSMITTED IN ANY FORM OR BY ANY MEANS, ELECTRONIC OR MECHANICAL, INCLUDING PHOTOCOPYING, RECORDING, OR BY ANY INFORMATION STORAGE AND RETRIEVAL SYSTEM, WITHOUT THE WRITTEN PERMISSION OF STANARD ARCHITECTURE, INC. THESE DRAWINGS ARE PREPARED FOR USE ON THIS SPECIFIC PROJECT AND ARE NOT SUITABLE FOR USE ON ANY OTHER PROJECT. ALL DIMENSIONS MUST BE VERIFIED BY THE CONTRACTOR AND DISCREPANCIES BEFORE PROCEEDING WITH CONSTRUCTION. CONTRACTOR SHALL MAINTAIN RECORD DRAWINGS.

Life Storage #357
115 S. Arrowhead Dr.
Montgomery, AL 36117



ISSUE FOR CONSTRUCTION REVISIONS:

PROJECT NUMBER: 201841
DATE: 4-8-19

SHEET NUMBER: S1.2

SECOND FLOOR FRAMING PLAN LEGEND:

- 1 INDICATES NOTE REFERRAL. SEE CORRESPONDING PLAN NOTE.
- INDICATES 4" INTERIOR STUD WALLS. SEE NOTES.
- INDICATES 6" EXTERIOR STUD WALLS. SEE NOTES.
- INDICATES 8" CMU WALLS. SEE NOTE 2.
- M.L. INDICATES MASONRY LINTEL OVER WALL OPENING BELOW. SEE LINTEL SCHEDULE ON SHEET S3.1.
- DHXX INDICATES HEADERS OVER WALL OPENING BELOW. SEE HEADER SCHEDULE ON SHEET S3.2.
- INDICATES EXTERIOR WALLS BELOW.
- INDICATES SPAN 1 FLOOR SLAB SYSTEM. SEE NOTE 1.

SECOND FLOOR FRAMING PLAN NOTES:

FLOOR SLAB SYSTEM:

- A. SLAB: 2" NORMAL WEIGHT CONCRETE.
- B. DECK: 2" 18 GAGE COMPOSITE STEEL DECK (TOTAL SLAB DEPTH = 4 1/2").
- C. REINFORCEMENT: 6 x 6 - W1.4 x W1.4 WELDED WIRE REINFORCEMENT LOCATED 1 1/2" BELOW TOP OF SLAB.
- D. ATTACHMENT TO SUPPORTS: #12 SCREWS IN 36 / 4 FASTENER PATTERN.
- E. SIDE LAP CONNECTION: (3) #10 SCREWS PER SPAN.
- F. PERIMETER CONNECTION: #12 SCREWS @ 12" ON CENTER.
- G. INSTALLATION CONFIGURATION: TWO SPAN MINIMUM.

MASONRY WALLS:

- A. WALL: 8" CMU.
- B. WALL REINFORCEMENT: #5 @ 32" ON CENTER.
- C. REINFORCEMENT POSITION: CENTER IN MASONRY UNIT CELL IN EACH DIRECTION, UNLESS NOTED OTHERWISE ON THE DRAWINGS.
- D. HORIZONTAL REINFORCEMENT: #6 WIRE LADDER TYPE @ 16" ON CENTER.
- E. SEE DETAILS ON SHEET S3.1 FOR ADDITIONAL REINFORCEMENT REQUIREMENTS.

INTERIOR COLD FORMED STEEL WALLS:

- A. STUDS: 400 S 250 - 54 STUDS @ 5'-0" ON CENTER IN 400 T 200 - 54 BOTTOM TRACK.
- B. SHEATHING: 29 GAGE U-PANELS ONE SIDE UNLESS NOTED OTHERWISE. SEE SHEAR WALL SCHEDULE FOR U-PANEL SECTION PROPERTIES.
- C. SEE DETAILS 1 / S5.1 AND 3 / S5.1 FOR TYPICAL INTERIOR WALL CONSTRUCTION.
- D. HAT CHANNEL BRACINGS: INSTALL CONTINUOUS 20 GA. HAT CHANNELS ON OPPOSITE SIDE OF STUDS AT THIRD-POINTS OF SPAN. SEE 1 / S5.1 FOR HAT CHANNEL SECTION PROPERTIES.

EXTERIOR COLD FORMED STEEL WALLS:

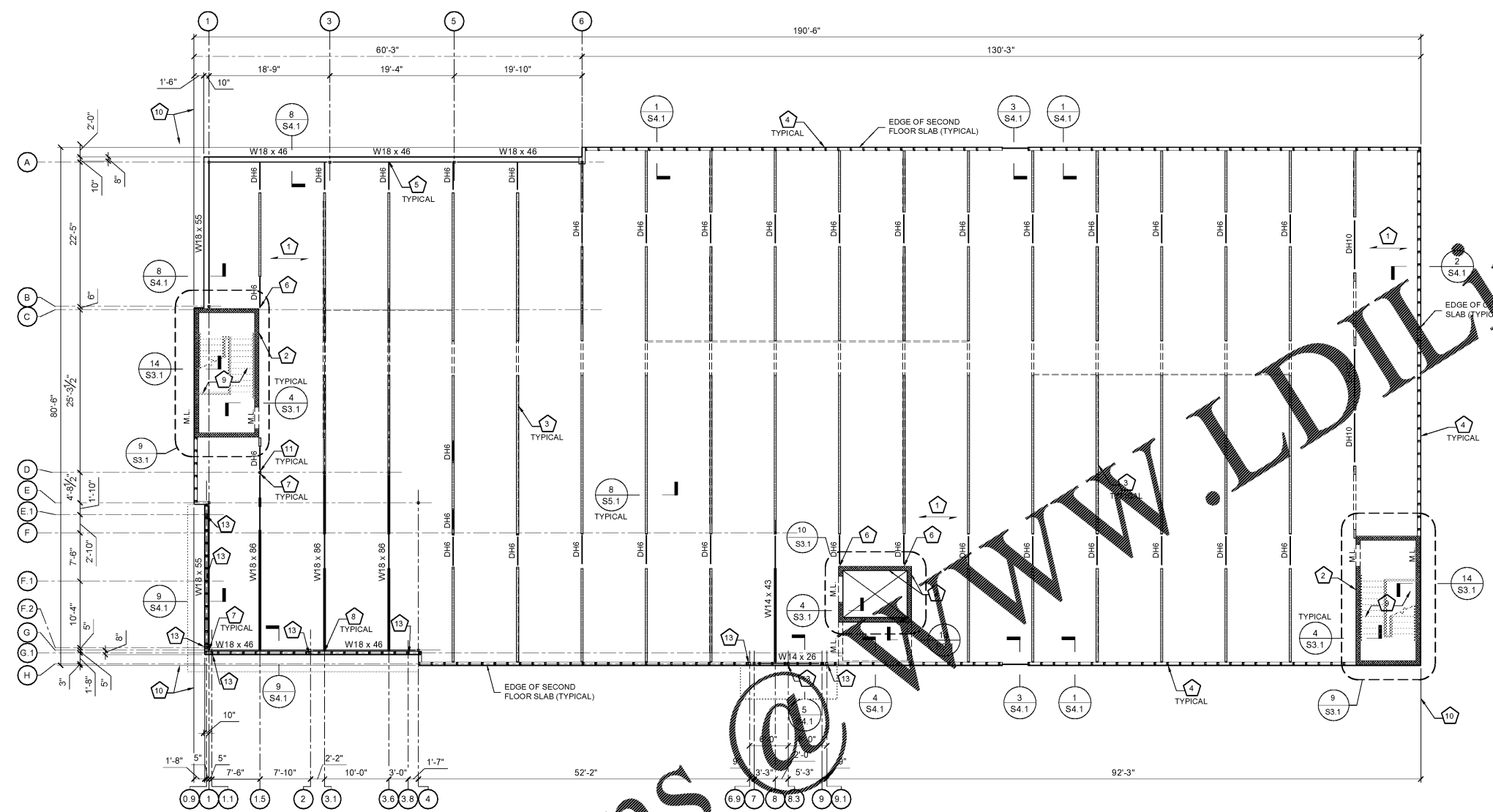
- A. STUDS: 600 S 250 - 54 STUDS @ 2'-0" ON CENTER IN 600 T 250 - 68 TOP TRACK AND 600 T 200-54 BOTTOM TRACK. SPACE STUDS @ 1'-4" ON CENTER WITHIN 8' OF BUILDING CORNERS (ZONE 5).
- B. SHEATHING: SHEATH INTERIOR FACE WITH WITH 29 GAGE U-PANELS. SEE SHEAR WALL SCHEDULE FOR U-PANEL SECTION PROPERTIES.
- C. SEE DETAIL 2 / S5.1 FOR TYPICAL EXTERIOR WALL CONSTRUCTION.
- D. FLAT STRAP BRACING: INSTALL 2" X 18 GA. FLAT STRAP ON EXTERIOR FACE OF STUDS AT MID-POINT OF SPAN.
- E. SEE DETAIL 13 & 14 / S5.1 FOR HEADER TO STEEL BEAM CONNECTION.
- F. SEE DETAIL 12 / S3.1 FOR HEADER CONNECTION TO MASONRY WALL.
- G. SEE DETAIL 11 / S5.1 FOR STEEL BEAM TO STEEL COLUMN CONNECTION.
- H. SEE DETAIL 11 / S5.1 FOR STEEL BEAM TO STEEL BEAM CONNECTION.
- I. STAIR DESIGN BY SPECIALTY ENGINEER. PROVIDE FULLY GROUTED CELLS AT ALL STAIR HANDRAIL LOCATIONS.

ALL EXTERIOR DIMENSIONS ARE TO THE NOMINAL FACE OF SLAB AT THE SECOND FLOOR.

SEE DETAIL 12 / S5.1 FOR HEADER ATTACHMENT TO STEEL COLUMN

SEE ARCHITECTURAL DRAWINGS FOR INTERIOR WALLS, DOOR, DOOR SIZES AND LOCATIONS.

HSS 4 x 4 x 1/2 CANOPY SUPPORT COLUMNS. LOCATION TO BE VERIFIED BY ARCHITECTURE.



Order Plans

SECOND FLOOR FRAMING PLAN
SCALE: 1/8" = 1'-0" FINISHED FLOOR EL. = 12'-0"

bennett&pless
Experience Structural Expertise
Atlanta, Boca Raton, Charlotte, Chattanooga, Orlando
1964 - 2019 Celebrating 55 Years of Structural Excellence
47 Perimeter Center East, Suite 500
Atlanta, Georgia 30346
Tel. 678 990 8700 Fax. 678 990 8701
Copyright 2019 - Bennett & Pless, Inc.
All Rights Reserved
B & P Job Number 18169