

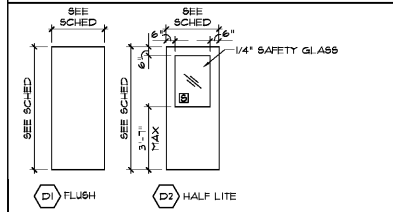
DOOR SCHEDULE

DOOR		DIMENSIONS				FRAME				DETAILS			LABEL	HARDWARE	REMARKS
NO.	DESCRIPTION	TYPE	WIDTH	HEIGHT	THICK	MATERIAL	FINISH	TYPE	MATERIAL	FINISH	HEAD	JAMB			
1ST FLOOR															
101A	BALES (EXT)	U1	3'-0"	7'-0"	1-3/4"	ALUM	PREFIN	U1	ALUM	PREFIN	1/AB1	---	1/AB1	---	HARDWARE BY DOOR MFR
102A	BREAK	D1	3'-0"	7'-0"	1-3/4"	H.M.	PNT	F1	H.M.	PNT	H-1	J-1	---	---	H-1, L-3, C-2, D8-1, S-1, KP-1
103A	TOILET	D1	3'-0"	7'-0"	1-3/4"	H.M.	PNT	F1	H.M.	PNT	H-1	J-1	---	---	H-1, L-2, C-1, D8-1, S-1, KP-1
104A	TOILET	D1	3'-0"	7'-0"	1-3/4"	H.M.	PNT	F1	H.M.	PNT	H-1	J-1	---	---	H-1, L-2, C-1, D8-1, S-1, KP-1
106A	ELECTRICAL	D1	3'-0"	7'-0"	1-3/4"	H.M.	PNT	F1	H.M.	PNT	H-1	J-1	---	---	H-1, L-2, C-1, D8-1, S-1, KP-1
107A	SPRINKLER (EXT)	D1	3'-0"	7'-0"	1-3/4"	INSUL. H.M.	PNT	F2	H.M.	PNT	H-3	J-3	6-1	---	H-1, L-2, C-1, D8-1, S-1, KP-1
108A	LOADING (EXT)	UB	5'-0"	7'-3"	1-3/4"	ALUM	PREFIN	UB	ALUM	PREFIN	2/AB3	---	2/AB3	---	HARDWARE BY DOOR MFR
109A	ELEVATOR EQUIP	D1	3'-0"	7'-0"	1-3/4"	H.M.	PNT	F2	H.M.	PNT	H-2	J-2	---	1 HR	H-2, L-4, C-3, T-1, US-1
110A	STAIR 1	D1	3'-0"	7'-0"	1-3/4"	H.M.	PNT	F2	H.M.	PNT	H-2	J-2	---	1 HR	H-1, L-1, C-1, D8-1, US-2
110B	STAIR 1 (EXT)	D1	3'-0"	7'-0"	1-3/4"	INSUL. H.M.	PNT	F2	H.M.	PNT	H-4	J-4	6-1	---	H-2, L-4, C-3, T-1, US-1
111A	STAIR 2	D1	3'-0"	7'-0"	1-3/4"	H.M.	PNT	F2	H.M.	PNT	H-2	J-2	---	1 HR	H-1, L-1, C-1, D8-1, US-2
111B	STAIR 2 (EXT)	D1	3'-0"	7'-0"	1-3/4"	INSUL. H.M.	PNT	F2	H.M.	PNT	H-5	J-5	6-1	---	H-2, L-4, C-3, T-1, US-1
2ND FLOOR															
202A	STAIR 1	D1	3'-0"	7'-0"	1-3/4"	H.M.	PNT	F2	H.M.	PNT	H-2	J-2	---	1 HR	H-1, L-1, C-1, D8-1, US-2
203A	STAIR 2	D1	3'-0"	7'-0"	1-3/4"	H.M.	PNT	F2	H.M.	PNT	H-2	J-2	---	1 HR	H-1, L-1, C-1, D8-1, US-2

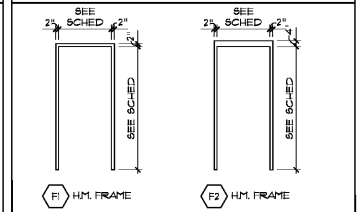
HARDWARE LEGEND - INDICATED MANUFACTURERS ARE BASIS OF DESIGN

H-1	HAGER BB279 HINGES 1-1/2 PR 4-1/2x4-1/2	652 (26D)	C-1	LCN 4030, HINGE SIDE MTD, SNB	ALUM	T-1	NGP BUMPER SEAL THRESHOLD 8965	ALUM
H-2	HAGER BB181 NRP HINGES 1-1/2 PR 4-1/2x4-1/2	630 (32D)	C-2	LCN 4030 EDA, PARALLEL ARM, SNB	ALUM	T-2	THRESHOLD BY DOOR MFR	ALUM
H-3	OFFSET PIVOTS BY DOOR MFR	AND	C-3	LCN 4040XP BUSH, PARALLEL ARM, SNB	ALUM	US-1	NGP 10066A LEATHERSTRIPPING, C621A SWEEP	ALUM
L-1	SCHLAGE PASSAGE LATCH AL105-SAT	626	C-4	SURFACE CLOSER W/ BACK-CHECK AND HOLD	AND	US-2	NGP 8050C HEAD AND JAMB SMOKE SEAL	BLACK
L-2	SCHLAGE PRIVACY LOCK AL405-SAT	626	D8-1	HAGER 234U WALL MTD DOOR STOP	652 (26D)	US-3	WEATHERSTRIPPING AND BOTTOM SWEEP BY DOOR MFR	BLACK
L-3	SCHLAGE CLASSROOM LOCK AL10FD-SAT	626	D8-2	HAGER 1020 CONCEALED HOLD OPEN	630 (32D)	S-1	SILENCERS: HAGER 30TD	GRAY
L-4	SCHLAGE STOREROOM LOCK AL80FD-SAT	626				KP-1	HAGER KICK PLATE 1845, 12" HGT	630 (32D)
L-5	PULL, PUSHBAR DEADLOCK AND THUMBTURN BY DOOR MFR	AND						

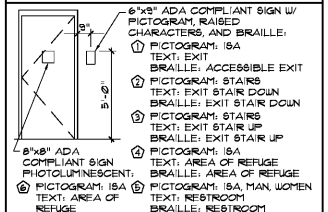
DOOR TYPES



DOOR FRAME TYPES



DOOR SIGNAGE



STORAGE UNIT DOORS

TYPE	DIMENSION	DESCRIPTION
A	8'-0"W x 7'-0"H	ROLL-UP
B	3'-0"W x 7'-0"H	ROLL-UP
C	8'-0"W x 7'-0"H	ROLL-UP
D	3'-0"W x 7'-0"H	ROLL-UP
E	7'-0"W x 7'-0"H	ROLL-UP
F	3'-0"W x 7'-0"H	FAUX DOOR
G	3'-0"W x 7'-0"H	SWING, ACCESSIBLE
H	8'-0"W x 7'-0"H	ROLL-UP, AUTOMATIC OPERATOR

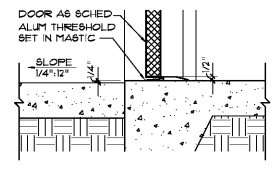
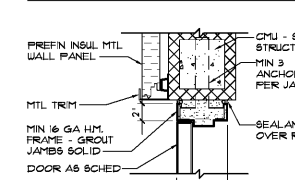
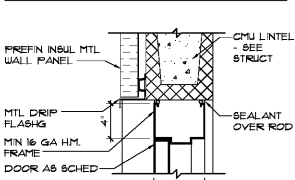
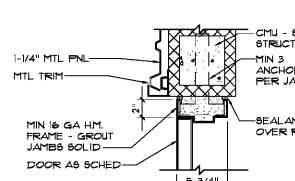
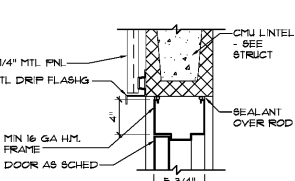
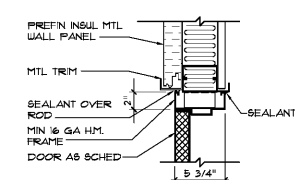
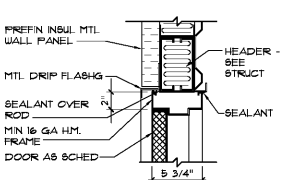
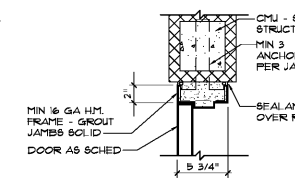
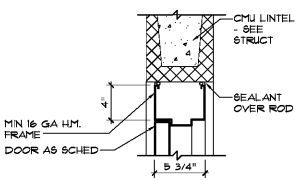
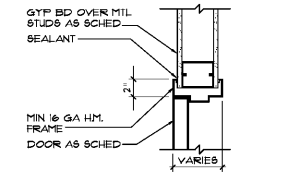
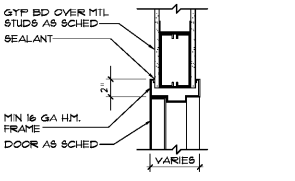
FINISH SCHEDULE

NO.	ROOM	FLOOR	BASE	WALLS	CLG	REMARKS
1ST FLOOR						
101	BALES	CT-1	CB-1	GB-F3	EXP-F6	F5 AT HM, F4 AT ACCENT WALL
102	BREAK	CT-1	CB-1	GB-F3	AP-1	F5 AT HM
103	TOILET	CT-1	CB-1	GB-F3	AP-1	F5 AT HM, 48" FRP-1 WAINSCOT
104	TOILET	CT-1	CB-1	GB-F3	AP-1	F5 AT HM, 48" FRP-1 WAINSCOT
105	UTILITY	CONC-5	---	EXP/F1	EXP	F1 AT GB WALLS
106	SPRINKLER	CONC-5	---	EXP/F1	EXP	F1 AT GB WALLS
107	ELECTRICAL	CONC-5	---	VB-1	GB-F1	EXP
108	LOADING	CONC-5	---	EXP/F1	EXP	F1 AT GB/CMU WALLS, US-1
109	ELEVATOR EQUIP	CONC-5	---	CMU/F1	EXP/F2	
110	STAIR 1	CONC-5	---	EXP/F1	EXP	
111	STAIR 2	CONC-5	---	CMU/F1	EXP/F2	
112	UNITS	CONC-5	---	EXP/F1	EXP	F1 AT GB/CMU WALLS, F6 AT SF
2ND FLOOR						
201	LOBBY	CONC-5	---	EXP/F1	EXP	F1 AT CMU WALLS, US-1
202	STAIR 1	CONC-5	---	CMU/F1	EXP/F2	
203	STAIR 2	CONC-5	---	CMU/F1	EXP/F2	
204	UNITS	CONC-5	---	EXP/F1	EXP	F1 AT CMU WALLS, F6 AT SF

- FINISH SCHEDULE NOTES**
- FINISH UNSCHEDULED CLOSETS AND SPACES TO MATCH ADJOINING ROOMS.
 - PAINT HOLLOW METAL DOORS AND FRAMES F5 UNO.
 - PAINT STAIR RAILS, RISERS, CHANNELS, AND FRANS F4 SEMI-GLOSS.
 - PROVIDE 6080"44"44"48" HIGH ALUM DIAMOND PLATE CORNER GUARDS AT ALL CORRIDOR/LOBBY OUTSIDE CORNERS.
 - PROVIDE HALLWAY SYSTEM WITH PIER, HEADERS AND PANELS PAINTED SEMI-GLOSS "GLOSSY WHITE", AND COLING DOORS AND FRAMES PAINTED SEMI-GLOSS "GLOSSY WHITE", UNO.
 - COVER EXPOSED GYP BD IN LOBBIES AND CORRIDORS WITH HALLWAY PANELS TO THE HEIGHT OF THE HALLWAY SYSTEM.
 - COVER EXPOSED GYP BD IN STORAGE UNITS WITH UNIT PARTITION PANELS TO THE HEIGHT OF THE UNIT PARTITIONS.
 - PROVIDE FAUX COLING DOORS AND FRAMES IN UNOCCUPIED DISPLAYED AREAS AND CORRIDOR DOORS VISIBLE TO THE EXTERIOR PAINTED LIFE STORAGE YELLOW.
 - EXPOSED STRUCT AND DECKING IN UNOCCUPIED SPACES TO BE PAINTED F6 MIN 10" BACK INTO STORAGE SPACE.

FINISH SCHEDULE LEGEND

- AP-1 2x2' SUSPENDED ACOUSTICAL PANEL CEILING - ANTI-STATIC "FIBURED" 102B, ANGLED TEGLAR EDGE, WHITE, PRELUDE PL 19/16" SUSPENSION SYSTEM
- CMU CONCRETE MASONRY UNITS - NO FINISH
- CMU-FX CONCRETE MASONRY UNITS - PAINT IN COLOR/GLOSS INDICATED
- CONC-5 CONCRETE SLAB - SEAL WITH CLEAR EPOXY COATING - 2 COATS IN ALL SPACES EXCEPT 1 COAT INSIDE STORAGE UNITS
- CT-1 CERAMIC TILE - STYLE SELECTIONS SKYROS GRAY 12"x12" PORCELAIN TILE, WITH MAPEI "PEARL GRAY" SANDED GROUT
- CB-1 CERAMIC BASE - STYLE SELECTIONS SKYROS GRAY 2"x2" PORCELAIN TILE CUT TO 6" HEIGHT, WITH 3/8" ANODIZED ALUMINUM L-CHANNEL AND MAPEI "PEARL GRAY" SANDED GROUT
- EXP EXPOSED STRUCTURE - NO FINISH
- EXP-FX EXPOSED STRUCTURE - PAINT IN COLOR/GLOSS INDICATED
- FRP-1 FIBERGLASS REINFORCED PLASTIC PANEL WAINSCOT - MARLITE STANDARD FRP, SMOOTH SURFACE, 100% WHITE
- GB GYPSUM BOARD - NO FINISH
- GB-FX GYPSUM BOARD - PAINT IN COLOR/GLOSS INDICATED
- F1 SHERWIN-WILLIAMS 501020 "INCREDIBLE WHITE", EGGSHELL
- F2 SHERWIN-WILLIAMS 50203 "INCREDIBLE WHITE", SEMI-GLOSS
- F3 SHERWIN-WILLIAMS 106 "GRAY MATTERS", EGGSHELL
- F4 SHERWIN-WILLIAMS 501020 "INCREDIBLE WHITE", EGGSHELL
- F5 SHERWIN-WILLIAMS 501021 "CITYSCAPE", SEMI-GLOSS
- F6 SHERWIN-WILLIAMS COLOR TO BE DETERMINED, FLAT
- WAINSCOT - 6080"44"48" HIGH ALUM DIAMOND PLATE
- V1 VINYL BASE - 4" VINYL COVE BASE - JOINTONITE 40 "BLACK"



S-1 SILL DETAIL

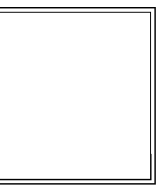
H-5 HEAD DETAIL

J-5 JAMB DETAIL

HEAD, JAMB, AND SILL DETAILS

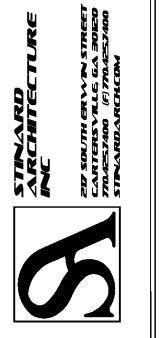
SCALE: 1/2"=1'-0"

Order Plans @ www.LDILLING.com



THESE DRAWINGS AND DESIGN ARE THE PROPERTY OF LDILLING ARCHITECTURE, INC. AND SHALL NOT BE REPRODUCED OR COPIED WITHOUT ARCHITECT'S PERMISSION. THEY WERE PREPARED FOR USE ON THIS SPECIFIC PROJECT AND ARE NOT SUITABLE FOR USE ON ANY OTHER PROJECT. AT NO TIME SHALL THE ARCHITECT BE LIABLE FOR ANY DAMAGES, INCLUDING CONSEQUENTIAL DAMAGES, ARISING FROM THE USE OF THESE DRAWINGS. DO NOT SCALE DRAWINGS.

Life Storage #357
115 S. Arrowhead Dr.
Montgomery, AL 36117



ISSUE FOR CONSTRUCTION REVISIONS:

PROJECT NUMBER: 201840
DATE: 4-8-19

SHEET NUMBER

A7.1