



THESE DRAWINGS AND DESIGN ARE THE PROPERTY OF STANARD ARCHITECTURE, INC. AND SHALL NOT BE REPRODUCED OR COPIED WITHOUT THE WRITTEN PERMISSION OF STANARD ARCHITECTURE, INC. ANY REUSE OF THESE DRAWINGS FOR ANY OTHER PROJECT WITHOUT THE WRITTEN PERMISSION OF STANARD ARCHITECTURE, INC. IS STRICTLY PROHIBITED. ALL DIMENSIONS SHALL BE AS SHOWN UNLESS OTHERWISE NOTED. DISCREPANCIES SHALL BE RESOLVED BY THE CONTRACTOR AND ARCHITECT BEFORE PROCEEDING WITH CONSTRUCTION. DO NOT SCALE DRAWINGS.

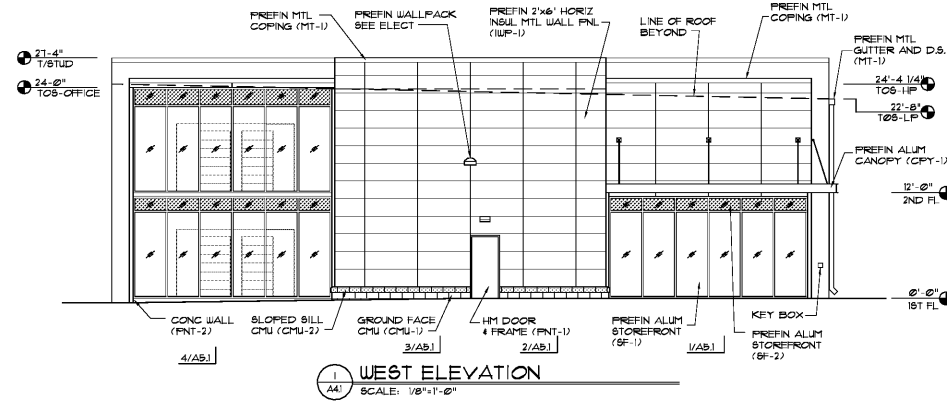
Life Storage #357
115 S. Arrowhead Dr.
Montgomery, AL 36117



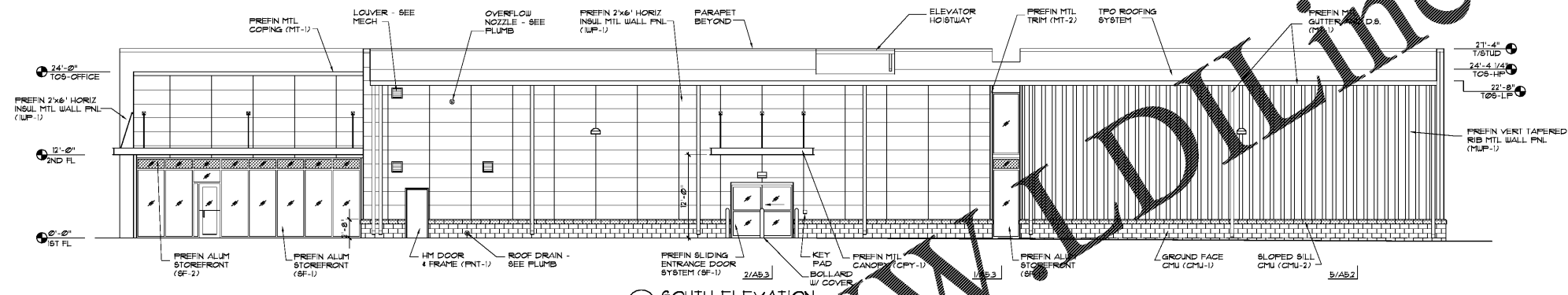
ISSUE FOR CONSTRUCTION REVISIONS:

PROJECT NUMBER 201840
DATE 4-8-19

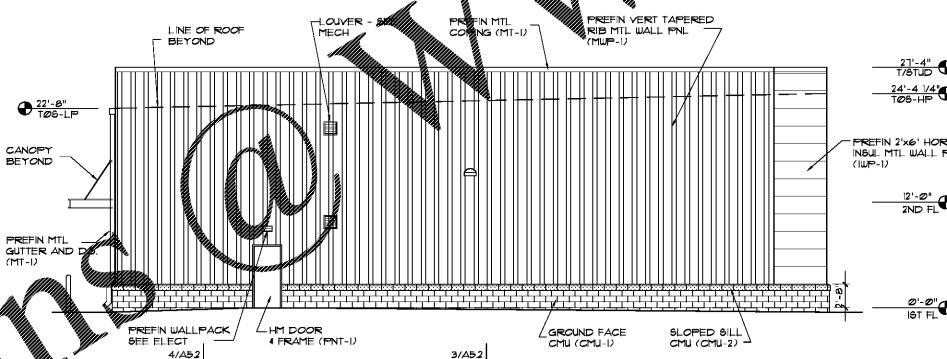
SHEET NUMBER A4.1



WEST ELEVATION
SCALE: 1/8"=1'-0"

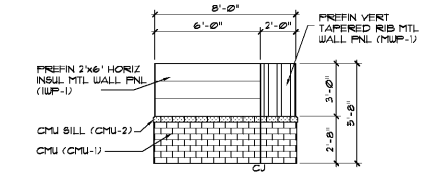


SOUTH ELEVATION
SCALE: 1/8"=1'-0"

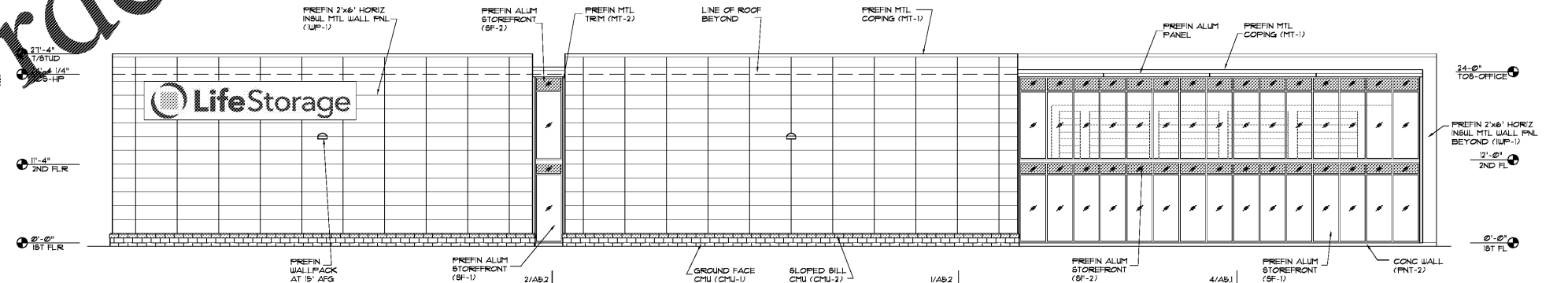


EAST ELEVATION
SCALE: 1/8"=1'-0"

MARK	MATERIAL	COLOR
CMU-1	GROUND FACE CONCRETE MASONRY UNIT	JOHNSON CONCRETE CO JCL-351 'ACADIA', GROUND FINISH
CMU-2	SLOPED BILL CONCRETE MASONRY UNIT	JOHNSON CONCRETE CO JCL-354 'FOUNTAIN GEYSER', GROUND FINISH
CPY-1	PREFIN ALUM CANOPY	MATCH MBCI 'IGLOO WHITE', SATIN
IWP-1	PREFIN HORIZ INSUL MTL WALL FNL (MECI CP ARCHITECTURAL)	MBCI 'IGLOO WHITE'
FNT-1	HM DOORS AND FRAMES	SHERWIN WILLIAMS 6W1073 'NETWORK GREY', SATIN
FNT-2	CONCRETE	SHERWIN WILLIAMS 6W1073 'NETWORK GREY', SATIN
MUP-1	PREFIN VERT TAPERED RIB MTL WALL FNL (MECI T2)	MBCI 'TUNDRA'
MT-1	PREFIN MTL TRIM, GUTTERS, AND D.S.	MBCI 'TUNDRA'
MT-2	PREFIN MTL TRIM	MBCI 'HARBOR BLUE'
SF-1	ALUM STOREFRONT W/ CLEAR GLAZING	YKK 'BONE WHITE' UC43350
SF-2	ALUM STOREFRONT W/ SPANDREL GLAZING	YKK 'BONE WHITE' UC43350 W/ ICD OPAC-COAT 'STONE WALL'



SAMPLE WALL
SCALE: 1/4"=1'-0"
GC TO PROVIDE SAMPLE WALL AND OBTAIN APPROVAL OF MATERIALS AND COLORS FROM ARCHITECT AND OWNER PRIOR TO PLACING ORDERS



NORTH ELEVATION
SCALE: 1/8"=1'-0"

Order Plans @ WWW.DIline.com