

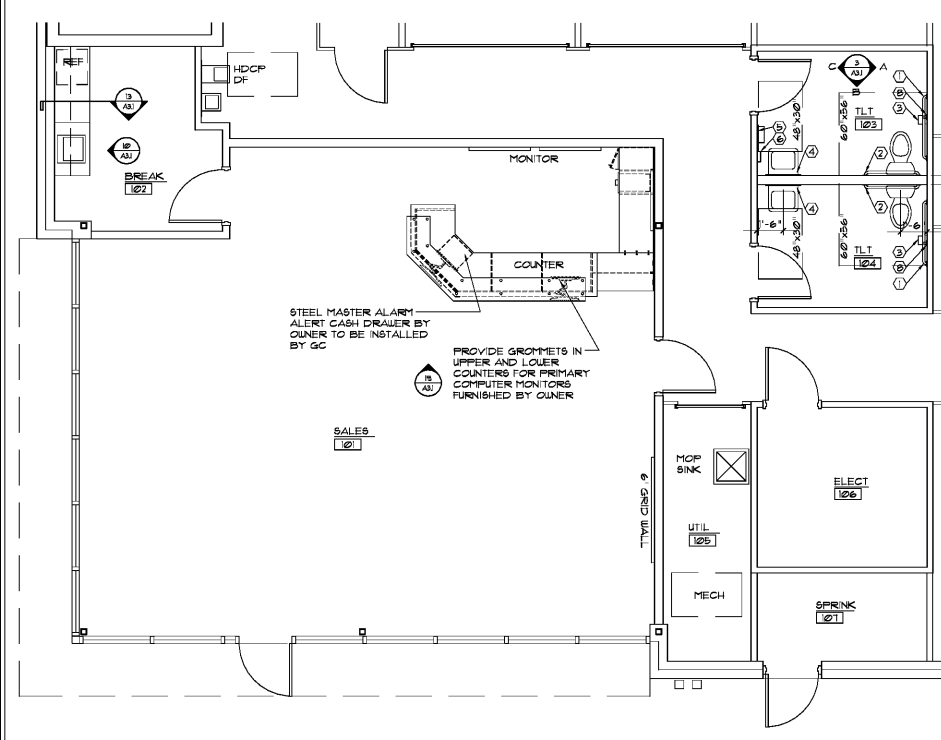
MARK	DESCRIPTION	SPECIFICATION
①	1-1/2" DIA x 42" GRAB BAR	BOBRICK B-6806x42"
②	1-1/2" DIA x 36" GRAB BAR	BOBRICK B-6806x36"
③	TOILET PAPER DISPENSER	BOBRICK B-4288
④	2'-0"x3'-0" MIRROR	BOBRICK B-1658 24x36
⑤	TOILET DISPENSER	BOBRICK B-4262
⑥	SOAP DISPENSER	BOBRICK B-412
⑦	DRAIN & SUPPLY PIPE INSUL.	TRUBRO LAV GUARD 2
⑧	1-1/2" DIA x 18" GRAB BAR	BOBRICK B-6806x18"
⑨	TOILET SIGN	CAL-ROYAL HAND-CAP BLUE

NOTE: PROVIDE BLOCKING IN WALLS FOR ATTACHMENT OF TOILET ACCESSORIES

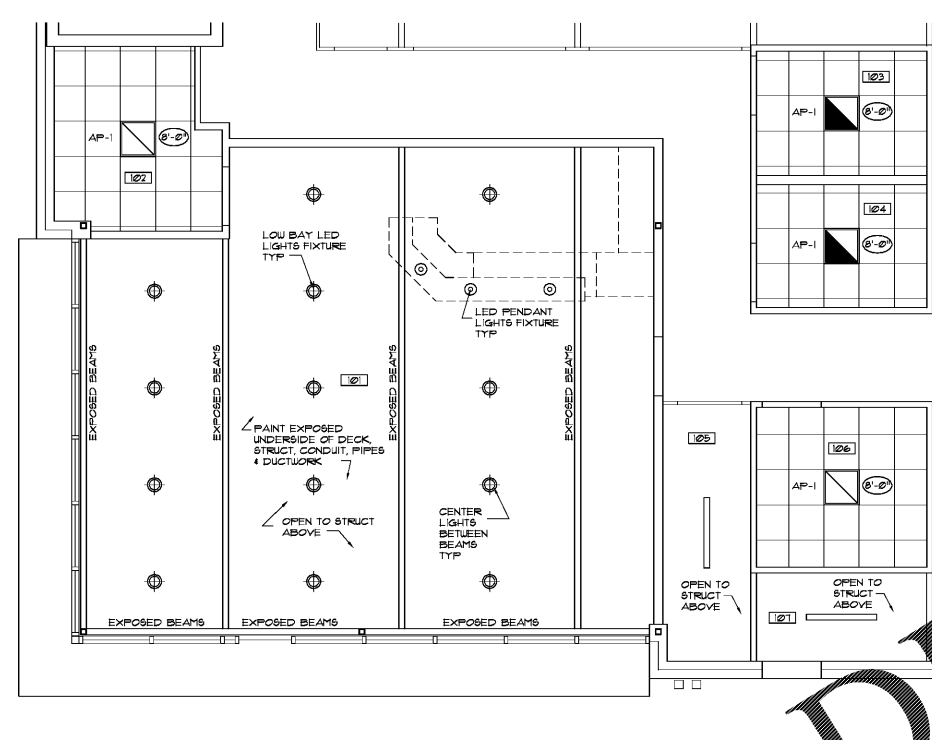
REFLECTED CEILING PLAN LEGEND	
	ACOUSTICAL PANEL CEILING SYSTEM
	FINISH CLG HGT AFF
	LAY-IN LIGHT FIXTURE - SEE ELEC
	LAY-IN LIGHT EMER FIXTURE - SEE ELEC
	SURFACE MTG LIGHT FIXTURE - SEE ELEC
	PENDANT LIGHT FIXTURE - SEE ELEC
	LOW BAY LIGHT FIXTURE - SEE ELEC
	FULL PKCK LIGHT FIXTURE - SEE ELEC



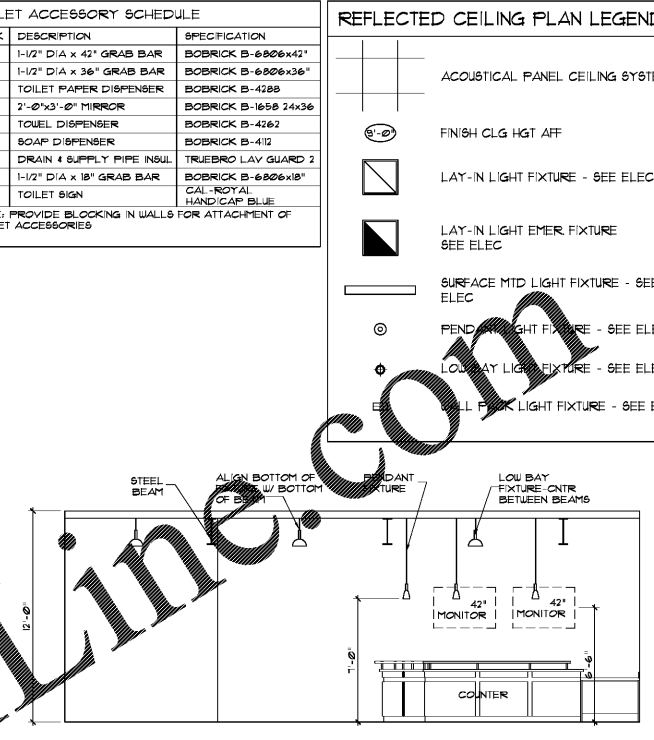
THESE DRAWINGS AND DESIGN ARE THE PROPERTY OF STANARD ARCHITECTURE, INC. AND SHALL NOT BE REPRODUCED OR COPIED IN ANY MANNER WITHOUT THE WRITTEN PERMISSION OF STANARD ARCHITECTURE, INC. THESE DRAWINGS ARE NOT TO BE USED FOR ANY OTHER PROJECT WITHOUT THE WRITTEN PERMISSION OF STANARD ARCHITECTURE, INC. THE CONTRACTOR SHALL BE RESPONSIBLE FOR VERIFYING ALL DIMENSIONS AND CONDITIONS BEFORE PROCEEDING WITH CONSTRUCTION. DO NOT SCALE DRAWINGS.



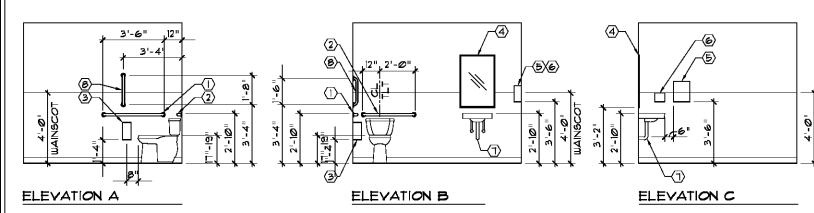
1 ENLARGED OFFICE PLAN  
A31 SCALE: 1/4"=1'-0"



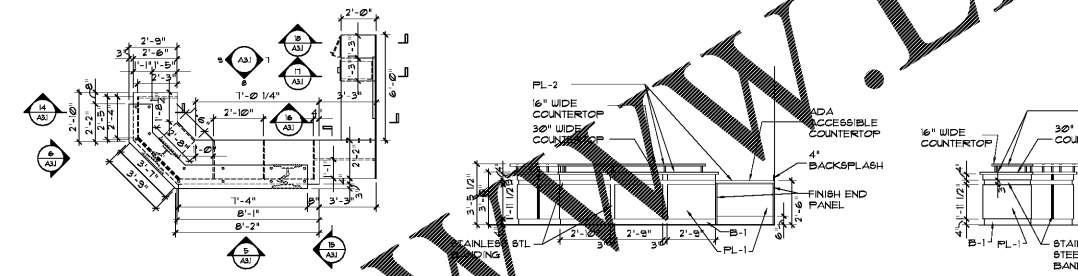
2 OFFICE REFLECTED CEILING PLAN  
A31 SCALE: 1/4"=1'-0"



3 OFFICE -ELEV  
A31 SCALE: 1/4"=1'-0"



4 TOILET ELEVATIONS  
A31 SCALE: 1/4"=1'-0"

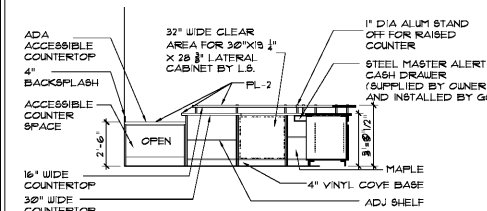


5 WORKSTATION PLAN  
A31 SCALE: 1/4"=1'-0"

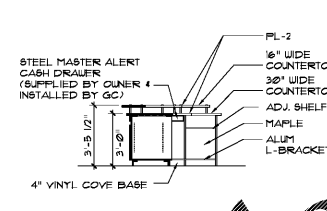
6 CASEWORK ELEV  
A31 SCALE: 1/4"=1'-0"

7 CASEWORK ELEV  
A31 SCALE: 1/4"=1'-0"

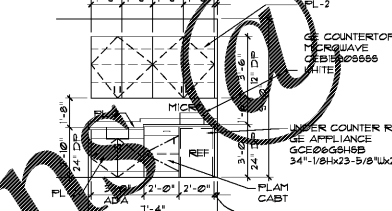
8 CASEWORK ELEV  
A31 SCALE: 1/4"=1'-0"



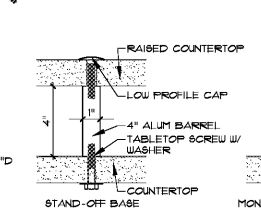
9 CASEWORK ELEV  
A31 SCALE: 1/4"=1'-0"



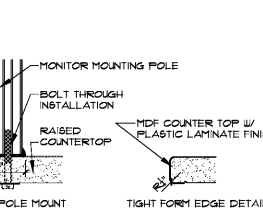
10 CASEWORK ELEV  
A31 SCALE: 1/4"=1'-0"



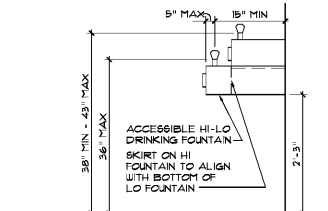
11 BREAK-ELEV  
A31 SCALE: 1/4"=1'-0"



12 DESK DETAILS  
A31 SCALE: 3/4"=1'-0"



13 DF DETAIL  
A31 SCALE: 3/4"=1'-0"

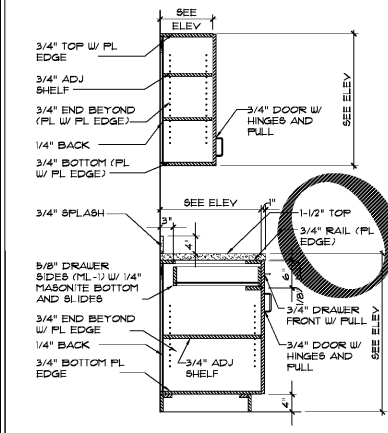


14 CASEWORK ELEV  
A31 SCALE: 1/4"=1'-0"

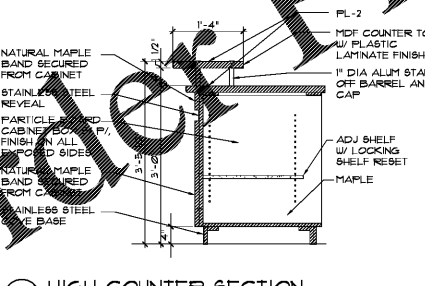
MARK	DESCRIPTION	COMMENTS
FL-1	KENSINGTON MAPLE SURFACE WILSONART 10116	
FL-2	WILSONART BALENTINO NERO 1864 HD FINISH	TIGHT FORM ROLLED EDGE
B-1	3" x 4" FLAM SOLID BANDING 6020 BRUSHED STAINLESS STEEL	

HARDWARE:  
 98PM ON CENTER POLISHED CHROME WIRE PULL  
 STAND-OFF  
 MCKEET 4 COMPANY, INC.  
 1" DIA BARREL BATIN ALUM STAND-OFF MPB9/4-84  
 1" DIA LOU PROFILE STAND-OFF CAP MPB9/CAP2-84 SATIN ALUM  
 1/2" DIA SCREW CONNECTOR MPB-HD-522  
 1/2" DIA TABLE TOP MOUNTING HARDWARE MPB-HD-175

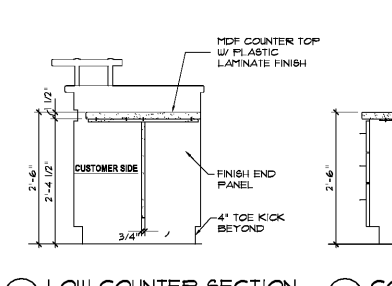
NOTE: MILLWORK TO BE FURNISHED AND INSTALLED BY GC.



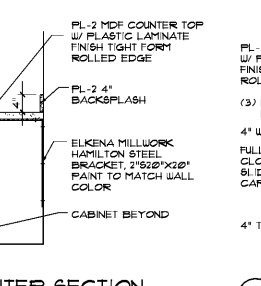
15 SECTION-WORKRM COUNTER  
A31 SCALE: 3/4"=1'-0"



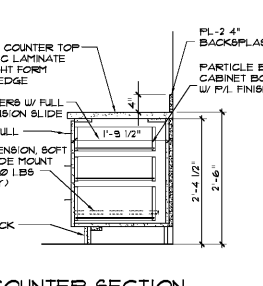
16 HIGH COUNTER SECTION  
A31 SCALE: 3/4"=1'-0"



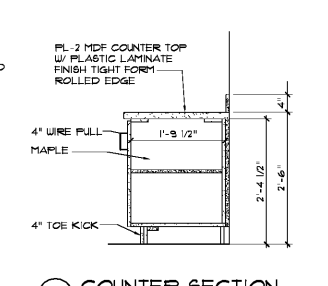
17 LOW COUNTER SECTION  
A31 SCALE: 3/4"=1'-0"



18 COUNTER SECTION  
A31 SCALE: 3/4"=1'-0"



19 COUNTER SECTION  
A31 SCALE: 3/4"=1'-0"



20 COUNTER SECTION  
A31 SCALE: 3/4"=1'-0"

Life Storage #357  
115 S. Arrowhead Dr.  
Montgomery, AL 36117



ISSUE FOR CONSTRUCTION REVISIONS:

PROJECT NUMBER: 201840  
DATE: 4-8-19

SHEET NUMBER: A3.1