

Through-penetration Firestop Systems

System No. CA-AL 1344

February 02, 2010

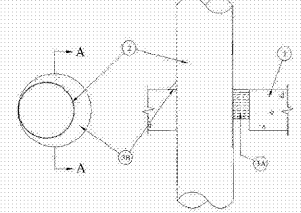
F Rating - 2 Hr

T Rating - 0 Hr

I Rating At Anchor - Low Than 1 CFM/ft

I Rating At 400 F - 2 CFM/ft

W Rating - Class 1



SECTION A-A

- 1. Floor Assembly - Min 4 1/2 in. (114 mm) thick reinforced concrete or equivalent...
2. Through Penetration - One or multiple pipes...
3. Firestop System - Max 4 in. (102 mm) for wall or ceiling...
4. Ceiling System - Max 4 in. (102 mm) for wall or ceiling...
5. Wall Assembly - Min 4 1/2 in. thick and reinforced...
6. Joint System - Max separation between bottom of floor or roof and top of wall is 1 in.

Joint Systems

System No. HW-D-0174

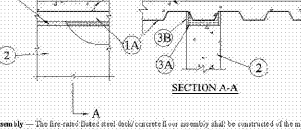
September 25, 2011

Assembly Rating - 2 Hr

I Rating at Anchor - Low Than 1 CFM/ft

I Rating at 400 F - Low Than 1 CFM/ft

W Rating - Class 1



SECTION A-A

- 1. Floor Assembly - The fire-rated floor and ceiling assembly shall be constructed...
2. Wall Assembly - Min 4 1/2 in. thick and reinforced...
3. Joint System - Max separation between bottom of floor or roof and top of wall is 1 in.

UL DESIGN

System No. E1985

March 11, 2010

Assembly Rating - 2 Hr

I Rating at Anchor - Low Than 1 CFM/ft

I Rating at 400 F - 2 CFM/ft

W Rating - Class 1

Design No. D981

Revised Assembly Rating - 1 or 2 Hr (See Item 2)

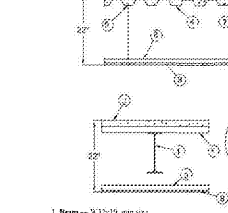
Revised Assembly Rating - 1 or 2 Hr (See Item 2)

Revised Assembly Rating - 2 Hr

I Rating at Anchor - Low Than 1 CFM/ft

I Rating at 400 F - 2 CFM/ft

W Rating - Class 1



SECTION A-A

- 1. Floor Assembly - Min 4 1/2 in. (114 mm) thick reinforced concrete...
2. Through Penetration - One or multiple pipes...
3. Firestop System - Max 4 in. (102 mm) for wall or ceiling...
4. Ceiling System - Max 4 in. (102 mm) for wall or ceiling...
5. Wall Assembly - Min 4 1/2 in. thick and reinforced...
6. Joint System - Max separation between bottom of floor or roof and top of wall is 1 in.

UL DESIGN

System No. E1985

March 11, 2010

Assembly Rating - 2 Hr

I Rating at Anchor - Low Than 1 CFM/ft

I Rating at 400 F - 2 CFM/ft

W Rating - Class 1

Design No. E1985

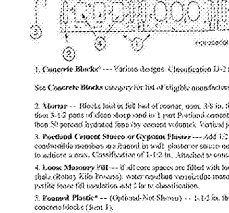
March 11, 2010

Assembly Rating - 2 Hr

I Rating at Anchor - Low Than 1 CFM/ft

I Rating at 400 F - 2 CFM/ft

W Rating - Class 1



SECTION A-A

- 1. Floor Assembly - Min 4 1/2 in. (114 mm) thick reinforced concrete...
2. Through Penetration - One or multiple pipes...
3. Firestop System - Max 4 in. (102 mm) for wall or ceiling...
4. Ceiling System - Max 4 in. (102 mm) for wall or ceiling...
5. Wall Assembly - Min 4 1/2 in. thick and reinforced...
6. Joint System - Max separation between bottom of floor or roof and top of wall is 1 in.

LS 367 Montgomery, AL

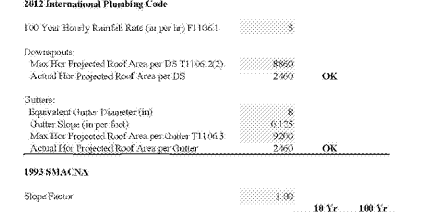
March 11, 2010

Assembly Rating - 2 Hr

I Rating at Anchor - Low Than 1 CFM/ft

I Rating at 400 F - 2 CFM/ft

W Rating - Class 1



SECTION A-A

- 1. Floor Assembly - Min 4 1/2 in. (114 mm) thick reinforced concrete...
2. Through Penetration - One or multiple pipes...
3. Firestop System - Max 4 in. (102 mm) for wall or ceiling...
4. Ceiling System - Max 4 in. (102 mm) for wall or ceiling...
5. Wall Assembly - Min 4 1/2 in. thick and reinforced...
6. Joint System - Max separation between bottom of floor or roof and top of wall is 1 in.

Envelope Compliance Certificate

Version 4.0.0.1

March 11, 2010

Assembly Rating - 2 Hr

I Rating at Anchor - Low Than 1 CFM/ft

I Rating at 400 F - 2 CFM/ft

W Rating - Class 1

Envelope Compliance Certificate

Version 4.0.0.1

March 11, 2010

Assembly Rating - 2 Hr

I Rating at Anchor - Low Than 1 CFM/ft

I Rating at 400 F - 2 CFM/ft

W Rating - Class 1

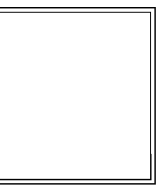
UNIT MIX TABULATION

LS 257 Montgomery, AL Life Storage

Unit Mix Tabulation

SF per Unit

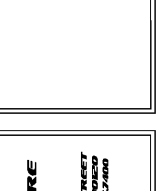
Table with columns for unit sizes (25, 40, 50, 70, 75, 80, 75, 135, 100, 130, 150, 160, 170, 180, 190, 200, 210, 220, 230, 240, 250, 260, 270, 280, 290, 300, 310, 320, 330, 340, 350, 360) and rows for 1st Floor, 2nd Floor, Total, and % Units.



THESE DRAWINGS AND DESIGN ARE THE PROPERTY OF STANARD ARCHITECTURE, INC. AND SHALL NOT BE REPRODUCED OR COPIED WITHOUT THE WRITTEN PERMISSION OF STANARD ARCHITECTURE, INC. THESE DRAWINGS ARE NOT TO BE USED FOR ANY OTHER PROJECT WITHOUT THE WRITTEN PERMISSION OF STANARD ARCHITECTURE, INC. ALL DIMENSIONS SHALL BE VERIFIED BY THE CONTRACTOR AND DISCREPANCIES BE THE PROCEEDING DRAWINGS.

Life Storage #357

115 S. Arrowhead Dr. Montgomery, AL 36117



ISSUE: FOR CONSTRUCTION REVISIONS:

PROJECT NUMBER: 201841 DATE: 4-8-19

SHEET NUMBER: A0.2

Order Plans @