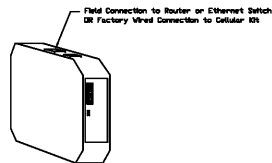


ELECTRICAL PACKAGE - Job#3767192

NO.	TAG	PACKAGE #	LOCATION	SWITCHES		OPTION	FANS CONTROLLED					
				LOCATION	QUANTITY		FAN TAG	TYPE	HP.	VOLT	FLA	
1		DCV-4111	Utility Cabinet Right	04 - Utility Cabinet Right	1 Light	Smart Controls DCV	Left	Exhaust	3	1,000	208	3.8
					Middle		Exhaust	3	1,000	208	3.8	
					Right		Exhaust	3	1,000	208	3.8	
					Fryer		Exhaust	3	0.333	208	1.3	
					Hood # 3		Supply	3	7,500	208	21.1	

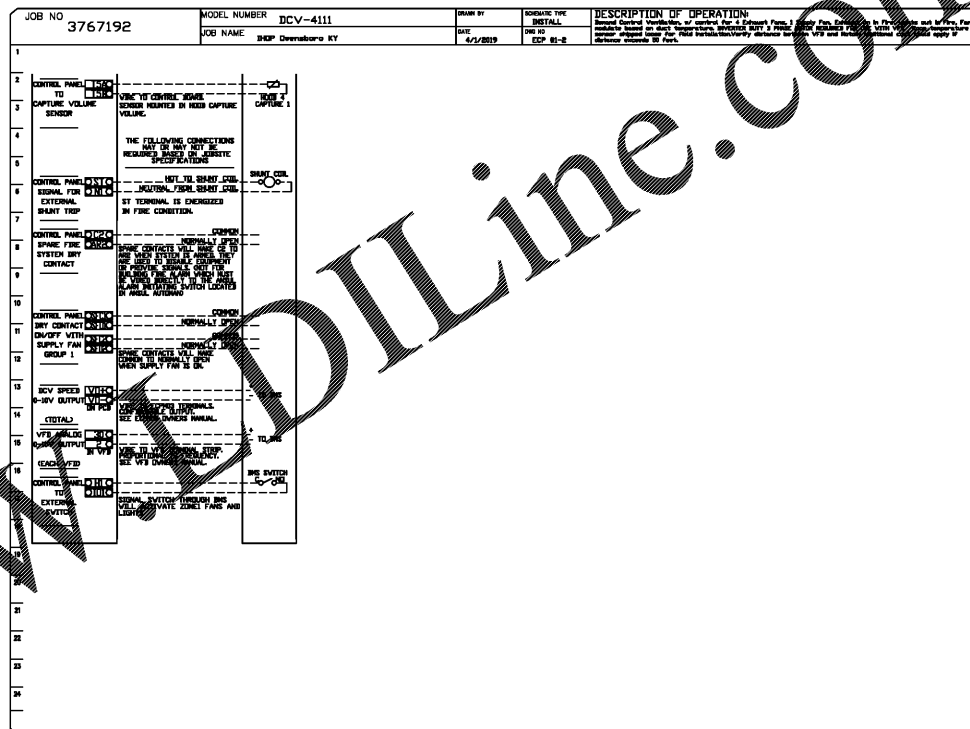
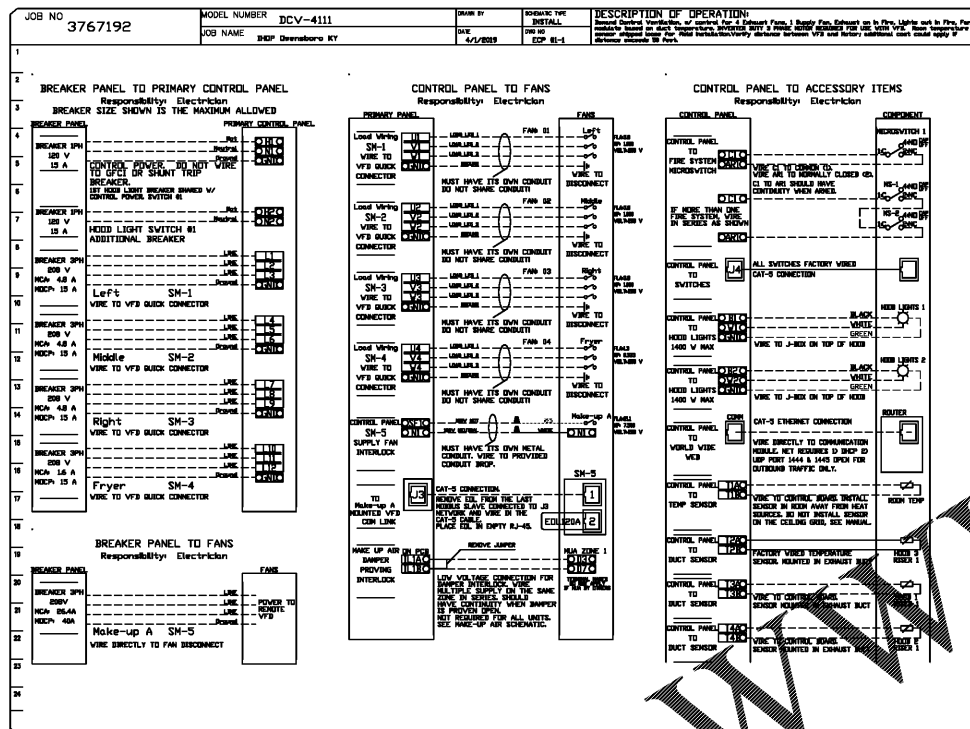


CASlink Monitor and Control

- Hood control panel to support communications to cloud-based Building Management System.
- Hood Control Panel to allow cloud-based Building Management System to monitor real time parameters outlined as MONITOR in the points list.
- Hood Control Panel to allow cloud-based Building Management System to control parameters outlined as CONTROL in the points list.
- Hood control panel to allow remote changes to system setting such as VFD frequencies, ECM speeds, temperature set points, fan and wash schedules, etc.

MONITORING AND CONTROL POINTS LIST

DCV Package	Function	SC Package	Function
Room Temperature	MONITOR	Room Temperature	MONITOR
Duct Temperature	MONITOR	Duct Temperature	MONITOR
RAU Discharge Temperature	MONITOR	RAU Discharge Temperature	MONITOR
Kitchen RTU Discharge Temperature	MONITOR	Kitchen RTU Discharge Temperature	MONITOR
Fan Speed	MONITOR	Controller Faults	MONITOR
Fan Amperage	MONITOR	Fan Faults	MONITOR
Fan Power	MONITOR	Fan Status	MONITOR
VFD Faults	MONITOR	PCU Faults	MONITOR
Controller Faults	MONITOR	PCU Filter Clog Percentages	MONITOR
Fan Faults	MONITOR	Fire Condition	MONITOR
Fan Status	MONITOR	CMC Fire System	MONITOR
PCU Faults	MONITOR	Building Pressure	MONITOR & CONTROL
PCU Filter Clog Percentages	MONITOR	Fume Buttons	MONITOR & CONTROL
Fire Condition	MONITOR	Light Buttons	MONITOR & CONTROL
CMC Fire System	MONITOR	Wash Buttons	MONITOR & CONTROL
Building Pressure	MONITOR		
Prep The Button	MONITOR & CONTROL		
Fume Button	MONITOR & CONTROL		
Light Button	MONITOR & CONTROL		
Wash Button	MONITOR & CONTROL		



Order Plans @ WWW.IHOPDILine.com

System Design Verification (SDV)

If ordered, CAS Service will perform a System Design Verification (SDV) once all equipment has had a complete start up per the Operation and Installation Manual. Typically, the SDV will be performed after all inspections are complete.

Any field related discrepancies that are discovered during the SDV will be brought to the attention of the general contractor and corresponding trades on site. These issues will be documented and forwarded to the appropriate sales office. If CAS Service has to resolve a discrepancy that is a field issue, the general contractor will be notified and billed for the work. Should a return trip be required due to any field related discrepancy that cannot be resolved during the SDV, there will be additional trip charges.

During the SDV, CAS Service will address any discrepancy that is the fault of the manufacturer. Should a return trip be required, the general contractor and appropriate sales office will be notified. There will be no additional charges for manufacturer discrepancies.

REVISIONS	
DESCRIPTION	DATE

CAPTIVE

Dallas Office

1901 Royal Lane (Suite 101), DALLAS, TX, 75228 PHONE: (214) 220-3669 FAX: (214) 220-0699 EMAIL: reg45@captiveline.com

IHOP Dwensboro KY
 DALLAS, TX, 75229

DATE: 4/1/2019
DWG.#: 3767192
DRAWN BY: CJP-REG45
SCALE: 3/4" = 1'-0"
MASTER DRAWING

SHEET NO.
 8