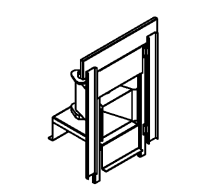
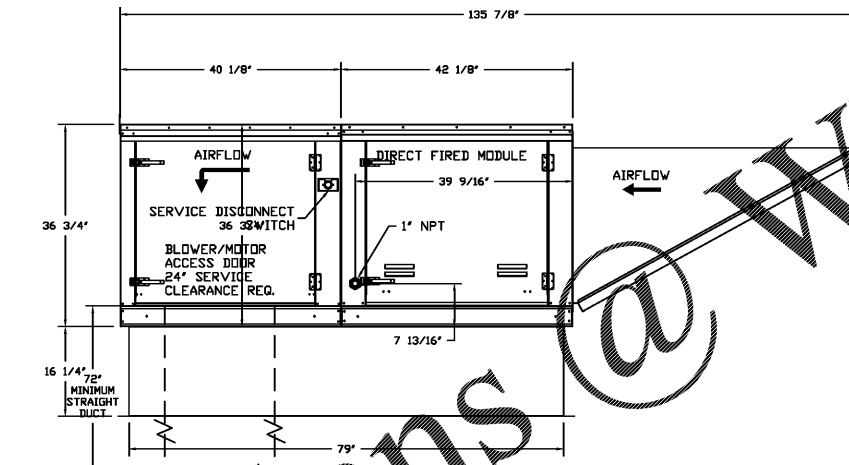
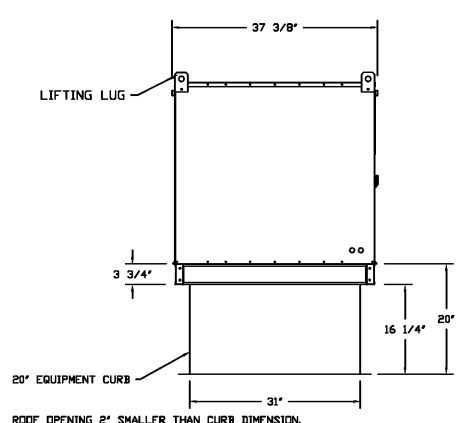
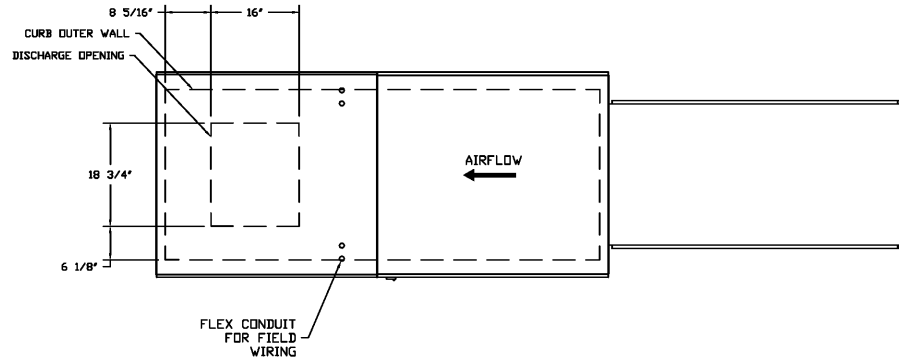


- FAN #7 AB-D500-200 - HEATER (MAKE-UP AIR)
1. DIRECT GAS FIRED HEATED MAKE UP AIR UNIT WITH 20" DIRECT DRIVE FAN
  2. INTAKE HOOD WITH EZ FILTERS
  3. DOWN DISCHARGE - AIR FLOW RIGHT -> LEFT
  4. MOTORIZED BACK DRAFT DAMPER 22.75" X 24" FOR SIZE 2 STANDARD & MODULAR HEATER UNITS W/EXTENDED SHAFT, STANDARD GALVANIZED CONSTRUCTION, 3/4" REAR FLANGE, LOW LEAKAGE, LF120S ACTUATOR INCLUDED
  5. LOW FIRE START, ALLOWS THE BURNER CIRCUIT TO ENERGIZE WHEN THE MODULATION CONTROL IS IN A LOW FIRE POSITION.
  6. GAS PRESSURE GAUGE, 0-35", 2.5" DIAMETER, 1/4" THREAD SIZE
  7. GAS PRESSURE GAUGE, -5 TO +15 INCHES WC, 2.5" DIAMETER, 1/4" THREAD SIZE
  8. SEPARATE 120VAC WIRING PACKAGE FOR MAKE-UP AIR UNITS. OPTION MUST BE SELECTED WHEN MOUNTING VFD IN PREWIRE PANEL OR WITH DCV PACKAGE. PROVIDES SEPARATE 120VAC INPUT TO SUPPLY FAN. THIS 120V SIGNAL MUST BE RUN BY ELECTRICIAN FROM DCV TO MAIN SWITCH.
  9. UNIT MOUNTED VFD FOR USE WITH ECPM03

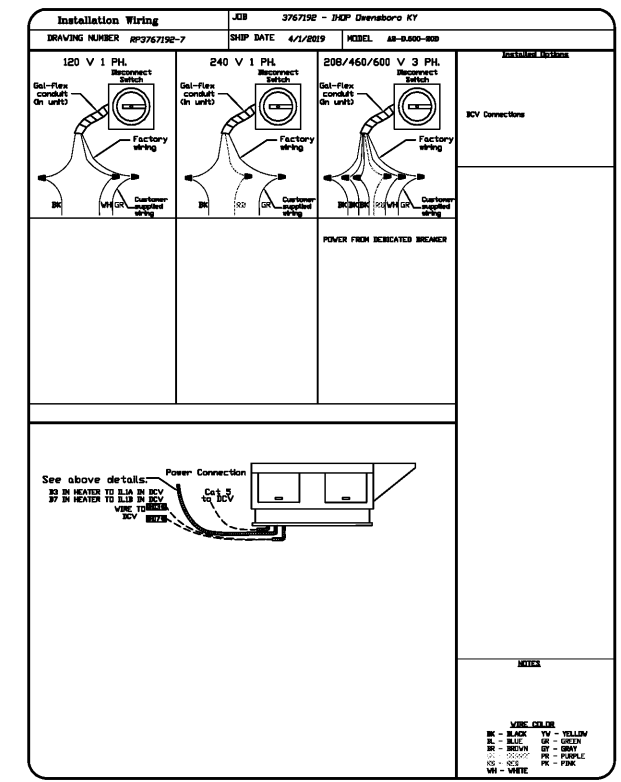
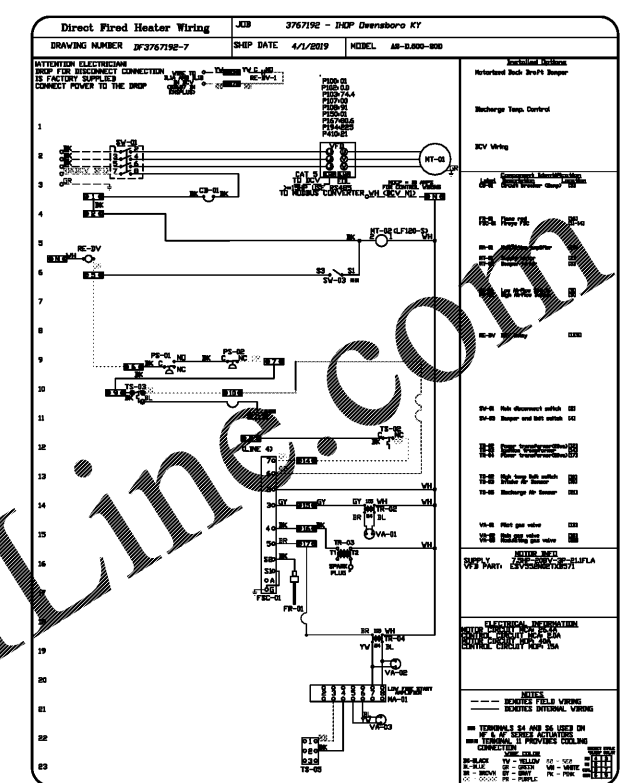
NOTE: SUPPLY DUCT MUST BE INSTALLED TO MEET SMACNA STANDARDS. A MINIMUM STRAIGHT DUCT LENGTH MUST BE MAINTAINED DOWNSTREAM OF UNIT DISCHARGE UNLESS OTHERWISE SPECIFIED. DO NOT RELY ON UNIT TO SUPPORT DUCT IN ANY WAY. FAILURE TO PROPERLY SIZE DUCTWORK MAY CAUSE SYSTEM EFFECTS AND REDUCE PERFORMANCE OF THE EQUIPMENT. SUGGESTED STRAIGHT DUCT SIZE IS 20" X 20" X 72" LONG.

SUPPLY SIDE HEATER INFORMATION:

WINTER TEMPERATURE = 12°F. TEMP. RISE = 63°F.  
 BTUS CALCULATED OFF STANDARD AIR DENSITY  
 OUTPUT BTUS AT ALTITUDE OF 0.0 Ft. = 340200  
 INPUT BTUS AT ALTITUDE OF 0.0 Ft. = 369763



**Direct Fired (DF) Profile Plate Specifications**  
**Description:**  
 Direct fired burners shall have patented US Patent No. US6629232B2, self-adjusting profile plates designed to ensure proper air velocity and pressure drop across the burner. Profile plates shall allow burners to achieve clean combustion by setting by-product levels to a maximum of 30ppm of carbon monoxide (CO) and 0.5ppm of nitrogen dioxide (NO2). Direct Fired units shall be configured with the blower mounted downstream of the burner. This arrangement will ensure a consistent air-flow, regardless of inlet air temperature.  
**Application:**  
 Spring-loaded burner profile plates are engineered to automatically react to the momentum of a fresh air stream, without the need for any motors or actuators to mechanically adjust them. With this feature, all DF units are designed for demand control ventilation (DCV) requirements.  
**Certification:**  
 All profile plate assemblies shall be included in the DF unit's ETL listing and comply with combined safety standards ANSI Z83.4 and CSA 37 (non-recirculating DF heaters) and ANSI Z83.8 (recirculating DF heaters).  
**General Construction:**  
 -Profile plates shall be formed from G90 galvanized steel.  
 -Profile plates shall vary in size per unit.  
 -Profile plates shall be mounted along the same plane as the discharge of the burner.  
 -Design shall incorporate properly torqued, permanently mounted spring hinges.  
 -Spring hinges shall be made from plated steel.



REVISIONS	
DESCRIPTION	DATE

**CAPTIVE**

Dallas Office  
 1901 Royal Lane Suite 101, DALLAS, TX, 75228 PHONE: (214) 220-3669 FAX: (214) 220-0669 EMAIL: reg45@captivair.com

IHOP Dwensboro KY  
 DALLAS, TX, 75229

DATE: 4/1/2019  
 DWG.#: 3767192  
 DRAWN BY: CJP-REG45  
 SCALE: 3/4" = 1'-0"  
 MASTER DRAWING

SHEET NO.  
 7