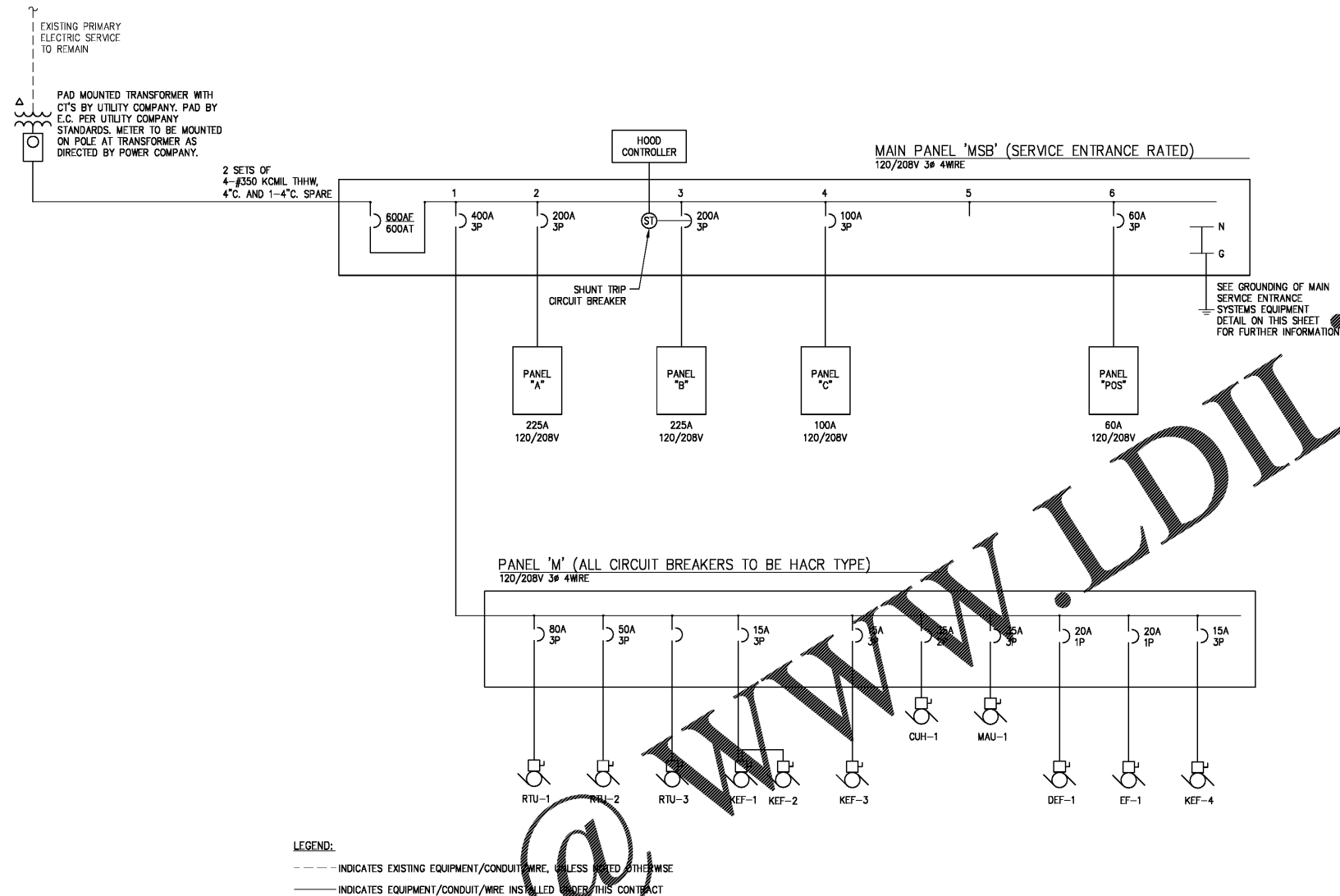


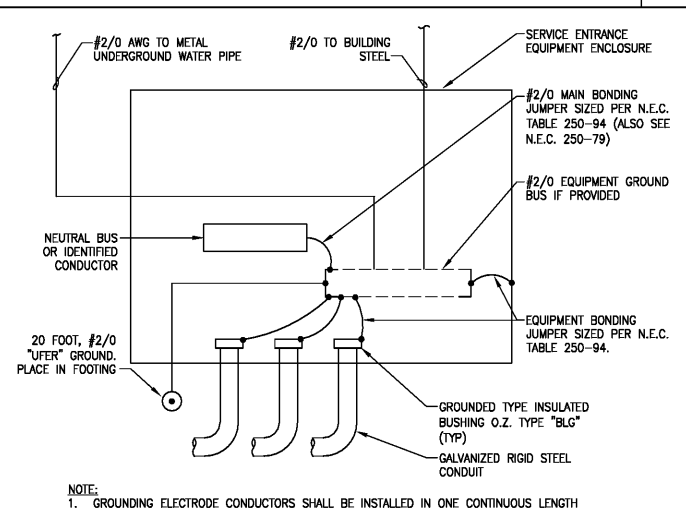
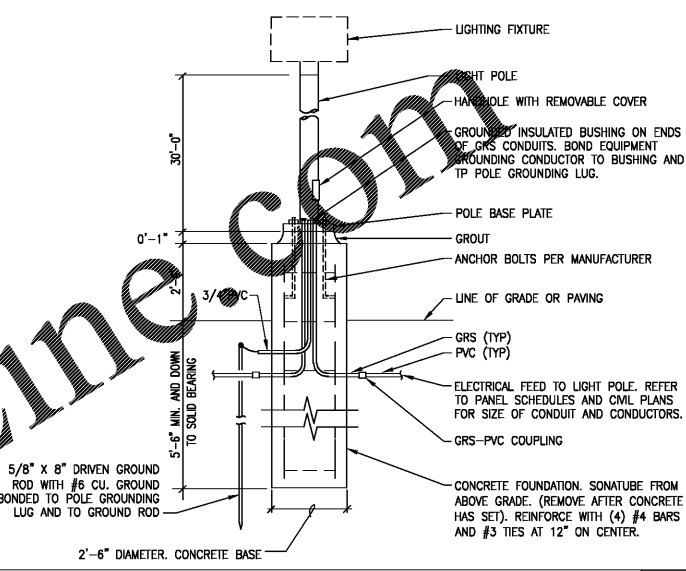
ONE-LINE DIAGRAM NOTES

1. THE ELECTRICAL CONTRACTOR SHALL VERIFY ALL POWER COMPANY REQUIREMENTS PRIOR TO BIDDING & INCLUDE THE COST OF ALL ASSOCIATED LABOR, MATERIALS, & CHARGES IN HIS BID.
2. THE ELECTRICAL CONTRACTOR SHALL VERIFY THE AVAILABLE FAULT CURRENT WITH THE UTILITY COMPANY PRIOR TO BIDDING AND PROVIDE EQUIPMENT RATED ACCORDINGLY. SUBMIT FAULT CURRENT CALCULATIONS WITH SHOP DRAWING SUBMITTAL.
3. ALL BUSSING SHALL BE COPPER.
4. PROVIDE FULL LENGTH VERTICAL BUSSING IN ALL SWITCHBOARDS, DISTRIBUTION PANELS, & PANELBOARDS.
5. ALL CIRCUIT BREAKERS SHALL BE BOLT-ON TYPE.
6. ALL WALL-MOUNTED EQUIPMENT SHALL BE MOUNTED ON 3/4" FIRE RATED BACKBOARD.
7. ALL FLOOR-MOUNTED EQUIPMENT SHALL BE MOUNTED ON 4" HIGH CONCRETE HOUSEKEEPING PAD.
8. PROVIDE NAMEPLATES PER NAMEPLATE DETAIL.
9. COORDINATE SPACE WITH ALL OTHER TRADES TO MAINTAIN ALL CODE-REQUIRED CLEARANCES.
10. REFER TO ELECTRICAL SPECIFICATIONS FOR ADDITIONAL REQUIREMENTS.
11. THE ELECTRICAL CONTRACTOR SHALL PROVIDE FINAL SETTINGS REQUIRED FOR ALL ADJUSTABLE/ELECTRONIC TYPE CIRCUIT BREAKERS WITH LONGTIME, SHORT TIME, OR INSTANTANEOUS, ETC. THE ELECTRICAL CONTRACTOR SHALL PROVIDE FINAL COORDINATION STUDY.
12. WHERE BREAKERS ARE UTILIZED WITHIN ELECTRICAL DISTRIBUTION EQUIPMENT, THE ELECTRICAL CONTRACTOR SHALL PROVIDE BREAKERS EQUIPPED WITH ADJUSTABLE INSTANTANEOUS TRIP SETTING TO COMPLY WITH NEC 240.87 ARC ENERGY REDUCTION. THE ADJUSTABLE INSTANTANEOUS TRIP SETTING OPTION SHALL BE PROVIDED WHERE THE HIGHEST CONTINUOUS TRIP SETTING FOR WHICH THE ACTUAL OVERCURRENT DEVICE INSTALLED IN A CIRCUIT BREAKER IS RATED OR CAN BE ADJUSTED IS 1200A OR HIGHER.
13. THE ELECTRICAL CONTRACTOR SHALL COMPLY WITH NEC ARTICLE 110.16 FOR LABELING OF PANELS FOR ARC FLASH HAZARD WARNING AS WELL AS FOLLOWING REQUIRED SAFETY PRECAUTIONS WHEN SERVICING OR MAINTAINING ELECTRICAL EQUIPMENT.
14. HVAC CIRCUIT BREAKERS TO BE "HACR" TYPE WHERE REQUIRED BY EQUIPMENT NAMEPLATE PER N.E.C.
15. ELECTRICAL CONTRACTOR SHALL BALANCE PANELS AND ELECTRICAL EQUIPMENT TO ±10% BETWEEN PHASES: A/B, B/C, A/C REGARDLESS OF CIRCUITING INDICATED.
16. PROPER CLEARANCE MUST BE MAINTAINED ABOUT ELECTRICAL EQUIPMENT PER N.E.C.. FIELD VERIFY EXACT MOUNTING SPACE AVAILABLE IN ELECTRICAL ROOM / AREA PRIOR TO INSTALLATION OF ELECTRICAL EQUIPMENT.
17. ELECTRICAL CONTRACTOR SHALL MAKE FINAL ELECTRICAL CONNECTIONS FOR A COMPLETE ELECTRICAL DISTRIBUTION SYSTEM.
18. EXTERIOR MOUNTED ELECTRICAL EQUIPMENT SHALL BE NEMA 3R RATED AND BE FURNISHED WITH HEATERS, THERMOSTAT AND DISCONNECTING MEANS INTEGRAL TO EQUIPMENT.
19. GROUNDING ELECTRODE SYSTEM CONDUCTORS SHALL BE COPPER.
20. CONDUCTORS SHALL BE COPPER, UNLESS NOTED OTHERWISE.
21. FEEDER ROUTING IS DIAGRAMMATIC ONLY. ACTUAL ROUTING OF FEEDERS (OVERHEAD OR UNDERGROUND) IS THE RESPONSIBILITY OF THE ELECTRICAL CONTRACTOR.

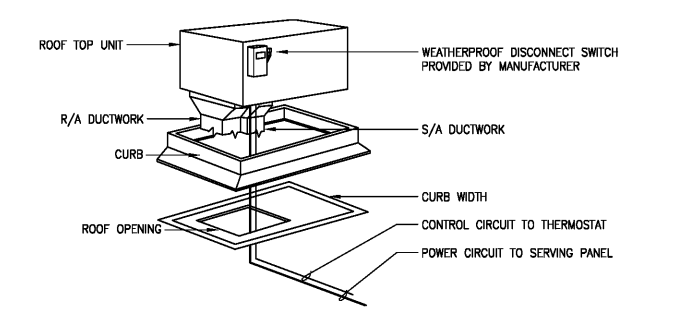


SINGLE LINE RISER DIAGRAM NOT TO SCALE 1

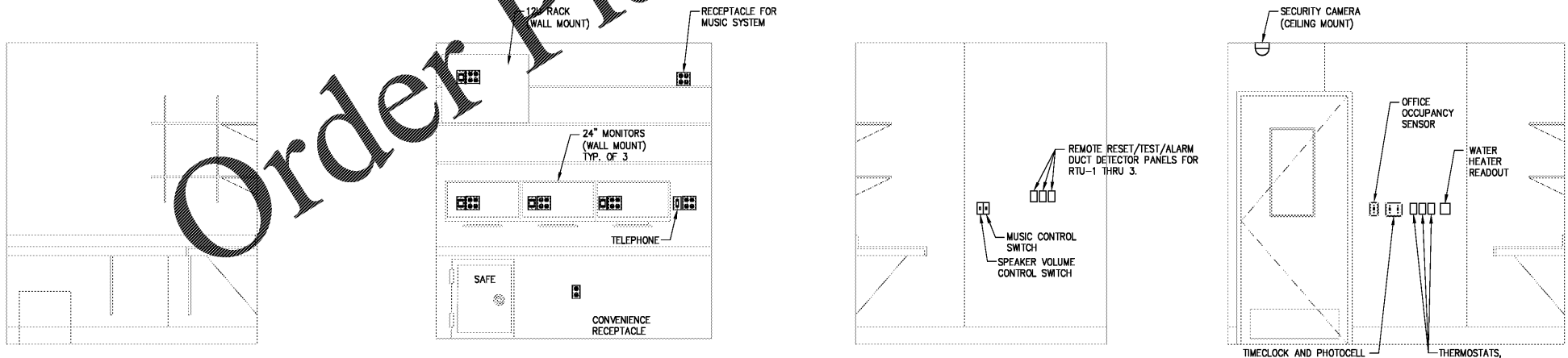
- POLE BASE DETAIL NOTES:
1. 3500 P.S.I. MIN. 28 DAY COMPRESSIVE STRENGTH CONCRETE WITH GRADE 60 REINFORCING STEEL
  2. IF WATER IS PRESENT IN HOLE, REMOVE BEFORE POURING CONCRETE.
  3. FOUNDATION EXCAVATION SHALL BE BY 24" AUGER IN UNDISTURBED OR PROPERLY COMPACTED FILL PER SPECIFICATIONS.
  4. FOUNDATION SHALL HAVE A MINIMUM ALLOWABLE END BEARING OF 2000 P.S.F. INCREASE BASE DEPTH AS REQUIRED.



GROUNDING OF MAIN SERVICE ENTRANCE SYSTEMS EQUIPMENT NOT TO SCALE 2



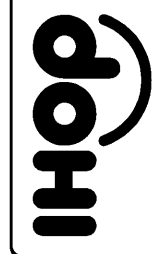
ROOF TOP UNIT WIRING DIAGRAM NOT TO SCALE 5



OFFICE ELEVATION NOT TO SCALE 4



LIP Architecture  
 2200 N. Cleveland Street, Columbus, Ohio 43208  
 614.291.8888  
 www.liparchitecture.com



PROJECT NO.:  
 DRAWN BY: TBA  
 CHECKED BY: TBA  
 ISSUED DATE: 05.07.19

ISSUED REVISIONS:


3070 Highland Pk. Dr.  
 Owensboro, KY 42303  
 Rise and Shine Prototype  
 ELECTRICAL DIAGRAMS & DETAILS

**TBA**  
 Thorson-Baker Associates  
 CONSULTING ENGINEERS  
 3030 West Streetsboro Road, Richfield, Ohio 44286  
 (330) 659-6688 Ph.  
 (330) 659-6675 Fax