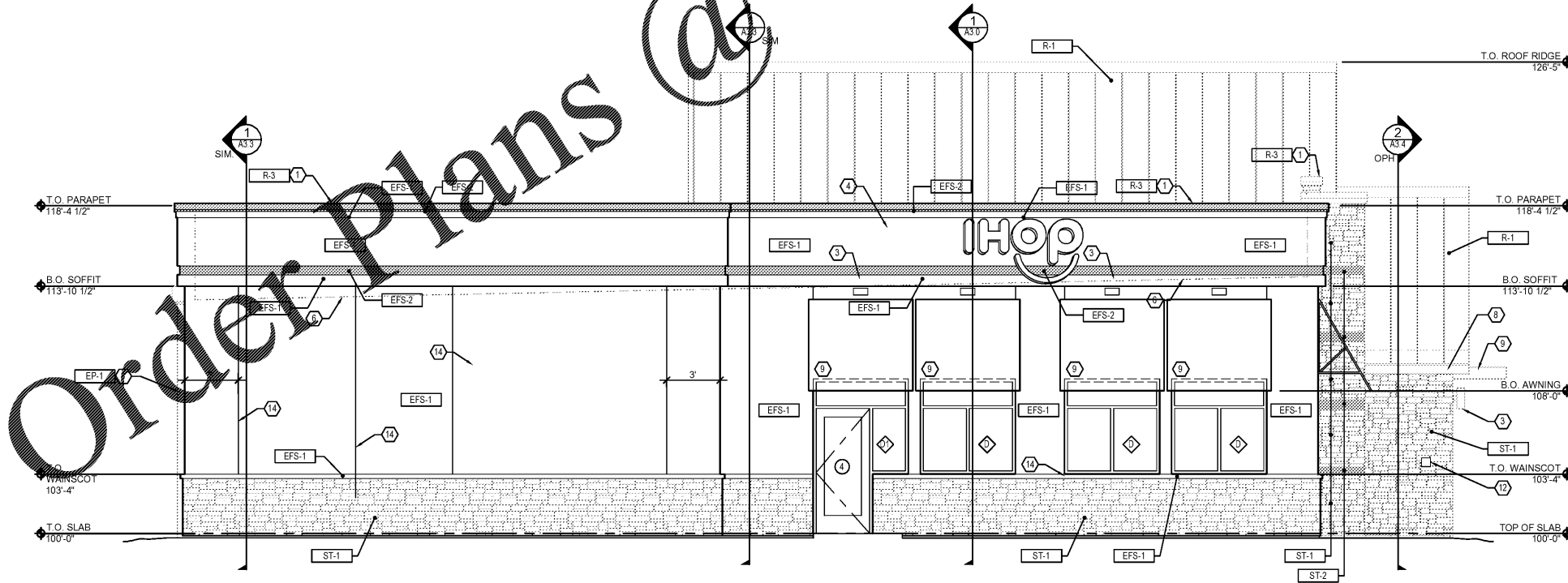


FRONT (WEST) ELEVATION 1  
1/4"=1'-0"



RIGHT (SOUTH) ELEVATION 2  
1/4"=1'-0"

**KEY NOTES:**

- 1 METAL CAP FLASHING, RE: 2/A3.6
- 2 THRU WALL WATER HEATER INTAKE/EXHAUST
- 3 LIGHT FIXTURE, RE: ELECTRICAL
- 4 BUILDING SIGNAGE ON RACEWAY, RE: SIGN PACKAGE
- 5 COLLECTOR BOXES AND DOWNSPOUTS POWDER COATED TO MATCH EFS-2, MANIFOLD LINE AND DISCHARGED THROUGH FACE OF CURB
- 6 LINE OF ROOF DECK BEYOND
- 7 ELECTRIC PANELS, RE: ELECTRICAL
- 8 METAL GUTTER POWDER COATED TO MATCH R-1
- 9 VINYL AWNINGS PROVIDED BY GC
- 10 ALUMINUM COMPOSITE PANEL JOINT, RE: 15/A3.6
- 11 RECESSED HOSE BIB, RE: PLUMBING
- 12 KNOX BOX LOCATION
- 13 CONCRETE ENTRY PAVING TO FRONT ENTRY
- 14 1/4" METAL CHANNEL, REED 15/A3.5

**EXTERIOR FINISHES**

EP-1 BALANCED BEIGE LIGHT  
EP-2 SYCAMORE TAN (MEDIUM TAN)  
EP-3 FIREWORKS RED

**EXTERIOR WALL FINISHES**

EFS-1 BALANCED BEIGE EIFS  
EFS-2 SYCAMORE TAN EIFS  
EFS-3 FIREWORKS RED EIFS  
ST-1 GOLDEN BUCKEYE CULTURED STONE

**ROOFING**

R-1 STANDING SEAM METAL ROOFING - AWARD BLUE  
R-2 DUROLAST ROOFING  
R-3 METAL COPING - DARK BRONZE

**MISC. EXTERIOR**

WP-1 WOOD PLANK WALL SYSTEM  
MT-1 METAL REVEAL (MATCH EP-2)  
FC-1 FABRIC AWNING "REGATTA"  
ASF-1 ALUMINUM STOREFRONT DK BRONZE  
BE-1a BENCHES



2138 N Cleveland Massillon Rd  
Akron, Ohio 44333  
330.689.3161  
www.lohanpartners.com

**L/P Architecture**  
USE OF DOCUMENTS Drawings, specifications and other documents prepared by the Architect are instruments of the profession. Their use is limited to the project and site for which they were prepared. The Architect assumes no liability for any other use of these documents, including copyright.



05/07/2019

PROJECT NO.:

DRAWN BY: L+P

CHECKED BY: L+P

ISSUED DATE: 05.07.19

ISSUED REVISIONS:


3070 Highland Pte. Dr.  
Owensboro, KY 42303

**IHOP**  
Rise and Shine Prototype  
Exterior Elevations