

GENERAL NOTES	
1	REFER TO FINISH SCHEDULE AND DETAILS FOR APPLIED FINISHES
2	REFER TO PLUMBING PLANS FOR ALL FLOOR DRAINS, FLOOR SINKS AND TRENCH DRAINS
KEY NOTES	
1	ALUMINUM THRESHOLD
2	START POINT OF TILE PATTERN
3	FLOOR DRAIN, FLOOR SINKS AND TRENCH DRAINS, RE: PLUMBING
4	MOP SINK
5	CONCRETE CURB, RE: STRUCTURAL
6	SLOPE CONCRETE SLAB TO DRAIN AS NOTED, RE: STRUCTURAL
7	AREA OF RECESSED, INSULATED SLAB AT FREEZER, RE: STRUCTURAL
8	PERIMETER UNDER TILE WATERPROOF MEMBRANE, REFER TO 17/A3.7
FLOOR FINISH LEGEND	
	PORCELAIN TILE (FT-1)
	ECO-GRIP SAFETY FLOORING (SF-1)
	VINYL TILE (LVT-1)
	EXPOSED CONCRETE (F-6)
FLOOR	
FT-1	6" x 24" PORCELAIN TILE, WILLOW BEND COLOR: WB-03 DARK BROWN
LVT-1	NOT USED
SF-1	ECO-GRIP SLIP RESISTANT SAFETY FLOORING
F-5	INSULATED CONCRETE SLAB
F-6	EXPOSED CONCRETE (UNSEALED)
BASE	
TB-1	6" x 24" PORCELAIN TILE, WILLOW BEND COLOR: WB-03 DARK BROWN
RB-1	ECO-GRIP SLIP RESISTANT SAFETY FLOORING
RB-2	DC-6" RUBBER BASE w/ TOE

L/P

2138 N Cleveland Massillon Rd
Aron, Ohio 44333
614.888.3163
www.loshandpartners.com

L/P Architecture

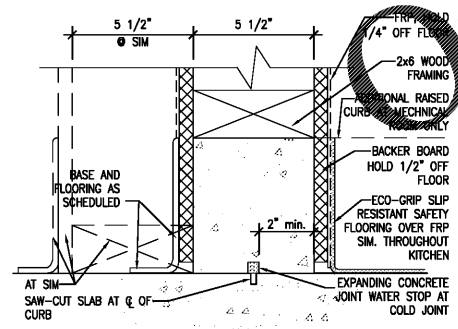
USE OF DOCUMENTS: Drawings, specifications and other documents prepared by the Architect are instruments of the profession and are to be used only with respect to the Project. The user assumes all liability for any use, alteration and other reserved rights, including copyright.

IHOPE

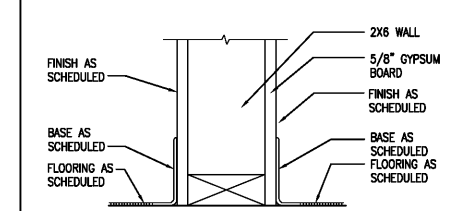
05/07/2019

PROJECT NO.:
DRAWN BY: L+P
CHECKED BY: L+P
ISSUED DATE: 05.07.19

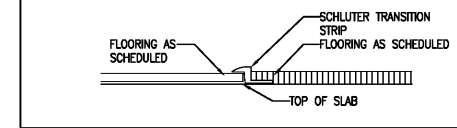
ISSUED REVISIONS:



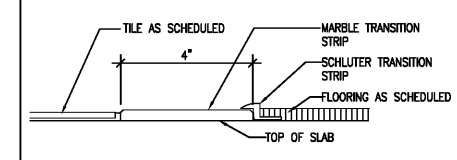
CURB DETAIL 3"=1'-0" 5



BASE DETAIL 1 1/2"=1'-0" 4



FLOOR TRANSITION DETAIL 3"=1'-0" 3



FLOOR TRANSITION DETAIL 3"=1'-0" 2

FINISH FLOOR PLAN 1/4"=1'-0" 1

Owensboro, KY 42303

3070 Highland Pte. Dr.

Rise and Shine Prototype

IHOPE

Finish Floor Plan