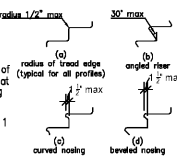
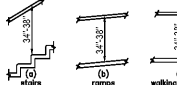


503.5 Vertical Clearance. Vehicle pull-up spaces, access aisles serving them, and a vehicular route from an entrance to the passenger loading zone...

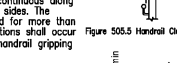
504 Stairways. 504.1 General. Stairs shall comply with 504. 504.2 Treads and Risers. All steps on a flight of stairs shall have uniform riser heights and uniform tread depths...



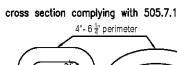
504.5 Handrails. 504.5.1 General. Handrails provided along walking surfaces complying with 403, required at ramps complying with 404, and required at stairs complying with 504 shall comply with 504.5.1.



505.5 Clearance. Clearance between handrail gripping surfaces and adjacent surfaces shall be 1 1/2 inches (38 mm) minimum.



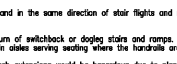
505.6 Grippings Surface. Handrail gripping surfaces shall be continuous along their length and shall not be obstructed along their top or sides. The bottom of handrail gripping surfaces shall not be obstructed for more than 20 percent of their length...



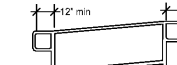
505.7.2 Cross Section. Handrail gripping surfaces shall have a cross section complying with 505.7.1 or 505.7.2. 505.7.1 Circular Cross Section. Handrail gripping surfaces with a circular cross section shall have a diameter of 1 1/4 inches (32 mm) minimum and 2 inches (51 mm) maximum.



505.8.1 Top and Bottom Extension of Ramps. Ramp handrails shall extend horizontally above the landing for 12 inches (305 mm) minimum beyond the top and bottom of the ramp run.



505.10.2 Top Extension of Stairs. At the top of a stair flight, handrails shall extend horizontally above the landing for 12 inches (305 mm) minimum beyond the top and bottom of the ramp run.



505.10.3 Bottom Extension of Stairs. At the bottom of a stair flight, handrails shall extend horizontally below the landing for 12 inches (305 mm) minimum beyond the top and bottom of the ramp run.



CHAPTER 6: PLUMBING ELEMENTS & FACILITIES

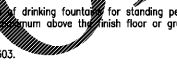
601 General. 601.1 Scope. The provisions of Chapter 6 shall apply where required by Chapter 2 or where referenced by a requirement in this document.

602 Drinking Fountains. 602.1 General. Drinking fountains shall comply with 307 and 602. 602.2 Clear Floor Space. Units shall have a clear floor and ground space complying with 305 positioned for a forward approach and centered on the unit.

602.3 Operable Parts. Operable parts shall comply with 309. 602.4 Spout Height. Spout outlets shall be 36 inches (915 mm) maximum above the finish floor or ground.

602.5 Spout Location. The spout shall be located 15 inches (380 mm) minimum from the vertical wall and 15 inches (125 mm) maximum from the front edge of the unit, including bumpers.

602.6 Water Flow. The spout shall provide a flow of water 4 inches (100 mm) high minimum and shall be located 5 inches (125 mm) maximum from the front of the unit.



602.7 Drinking Fountains for Standing Persons. Spout outlets of drinking fountains for standing persons shall be 38 inches (965 mm) minimum and 43 inches (1090 mm) maximum above the finish floor or ground.

603 Toilet and Bathing Rooms. 603.1 General. Toilet and bathing rooms shall comply with 603. 603.2 Clearances. Clearances shall comply with 603.2.

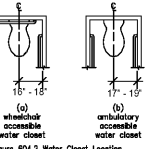
603.2.1 Turning Space. Turning space complying with 304 shall be provided within the room. CHAPTER 6: PLUMBING ELEMENTS & FACILITIES (CONT.)

603.2.2 Overlap. Required clear floor spaces, clearance of fixtures, and turning space shall be permitted to overlap. 603.2.3 Door Swing. Doors shall not swing into the clear floor space or clearance required for any fixture.

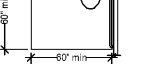
603.3 Doors. 603.3.1 General. Doors to a toilet room for a single occupant accessed only through a private office and not for common use or public use shall be permitted to swing into the clear floor space or clearance provided the swing of the door can be reversed to comply with 603.3.1.

603.3.2 Mirrors. Mirrors located above lavatories or countertops shall be installed with the bottom edge of the reflecting surface 40 inches (1015 mm) maximum above the finish floor or ground.

604.1 General. Water closets and toilet compartments shall comply with 604.2 through 604.8. 604.2 Location. The water closet shall be positioned with a wall or partition to the rear and to one side.



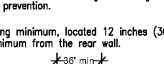
604.3 Clearance. Clearances around water closets and in toilet compartments shall comply with 604.3. 604.3.1 Size. Clearance around a water closet shall be 60 inches (1525 mm) minimum measured perpendicular from the rear wall.



604.3.2 Overlap. The required clearance around the water closet shall be permitted to overlap the water closet, associated grab bars, dispensers, sanitary napkin disposal units, coat hooks, shelves, access panels, clear floor spaces and clearances required of other fixtures, and the latching device or obstruction shall be located within the required water closet clearance.

604.4 Seats. The seat height of a water closet above the finish floor shall be 17 inches (430 mm) minimum and 19 inches (485 mm) maximum measured to the top of the seat. Seats shall not be sprung to return to a closed position.

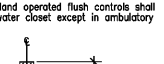
604.5 Grab Bars. Grab bars for water closets shall comply with 609. Grab bars shall be provided on the side wall adjacent to the water closet and on the rear wall. 604.5.1 General. Grab bars shall be installed in a toilet room for a single occupant accessed only through a private office and not for common use or public use providing that reinforcement has been installed in walls and located so as to permit the installation of grab bars complying with 604.5.



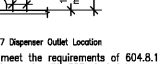
604.5.2 Rear Wall. The rear wall grab bar shall be 36 inches (915 mm) long minimum and extend from the centerline of the water closet 12 inches (305 mm) minimum on one side and 24 inches (610 mm) minimum on the other side. 604.5.3 Grab Bar. The rear grab bar shall be permitted to be 24 inches (610 mm) long minimum, centered on the water closet.



604.6 Flush Controls. Flush controls shall be hand operated or automatic. Hand operated flush controls shall comply with 309.2 and 309.4 and shall be installed 36 inches (915 mm) maximum above the finish floor. Flush controls shall be located on the open side of the water closet except in ambulatory accessible compartments complying with 604.8.2.



604.7 Dispensers. Toilet paper dispensers shall comply with 309.4 and shall be 7 inches (180 mm) minimum and 9 inches (230 mm) maximum in front of the water closet measured to the centerline of the dispenser. The outlet of the dispenser shall be 15 inches (380 mm) minimum and 48 inches (1220 mm) maximum above the finish floor and shall not be located behind grab bars. Dispensers shall be of a type that controls delivery or that does not allow continuous paper flow.

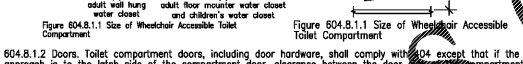


604.8 Toilet Compartments. Wheelchair accessible toilet compartments shall meet the requirements of 604.8.1 and 604.8.3. Compartments containing more than one plumbing fixture shall comply with 603. Ambulatory accessible compartments shall comply with 604.8.2 and 604.8.3. 604.8.1 Wheelchair Accessible Compartments. Wheelchair accessible compartments shall comply with 604.8.1.

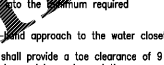
604.8.1.1 Size. Wheelchair accessible compartments shall be 60 inches (1525 mm) wide minimum measured perpendicular to the side wall, and 56 inches (1420 mm) deep minimum for wall hung water closets and 59 inches (1500 mm) deep minimum for floor mounted water closets measured perpendicular to the rear wall.



604.8.1.2 Doors. Toilet compartment doors, including door hardware, shall comply with 404 except that if the approach is to the latch side of the compartment door, clearance between the door side of the compartment and any obstruction shall be 42 inches (1065 mm) minimum. Doors shall be self-closing. A door pull shall be 4 inches (100 mm) maximum from the side wall and shall be 48 inches (1220 mm) maximum from the front partition. The door shall be self-closing. A door pull shall be 4 inches (100 mm) maximum from the front partition. The door shall be self-closing. A door pull shall be 4 inches (100 mm) maximum from both sides of the door near the latch. Toilet compartment doors shall be 60 inches (1525 mm) minimum required compartment area.



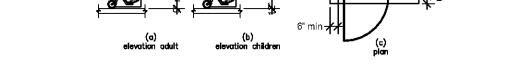
604.8.1.3 Approach. Compartments shall be arranged for left-hand and right-hand approach to the water closet. 604.8.1.4 Toe Clearance. Front and side toe clearance shall provide a toe clearance of 9 inches (230 mm) minimum from the finish floor to 16 inches (405 mm) deep minimum beyond the compartment-side face of the partition exclusive of partition support members. Compartments for children's use shall provide a toe clearance of 7 inches (178 mm) maximum above the finish floor.



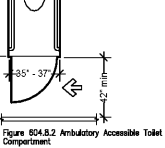
604.8.1.5 Grab Bars. Grab bars shall comply with 609. A side-wall grab bar complying with 604.5.1 shall be provided and shall be located on the wall closest to the water closet. In addition, a rear-wall grab bar complying with 604.5.2 shall be provided.

604.8.2 Ambulatory Accessible Compartments. Ambulatory accessible compartments shall comply with 604.8.2. 604.8.2.1 Size. Ambulatory accessible compartments shall have a depth of 60 inches (1525 mm) minimum and of 35 inches (890 mm) minimum and 37 inches (940 mm) maximum.

604.8.2.2 Doors. Toilet compartment doors, including door hardware, shall comply with 404, except that if the approach is to the latch side of the compartment door, clearance between the door side of the compartment and any obstruction shall be 42 inches (1065 mm) minimum. The door shall be self-closing. A door pull complying with 404.2.7 shall be placed on both sides of the door near the latch. Toilet compartment doors shall not swing into the minimum required compartment area.



604.8.2.3 Grab Bars. Grab bars shall comply with 609. A side-wall grab bar complying with 604.5.1 shall be provided on both sides of the compartment.



604.8.3 Coat Hooks and Shelves. Coat hooks shall be located within one of the reach ranges specified in 308. Shelves shall be located 40 inches (1015 mm) minimum and 48 inches (1220 mm) maximum above the finish floor.

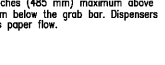
604.9 Water Closets and Toilet Compartments for Children's Use. Water closets and toilet compartments for children's use shall comply with 604.9. 604.9.1 Location. The water closet shall be located with a wall or partition to the rear and to one side.

604.9.2 Clearance. Clearance around a water closet shall comply with 604.3. 604.9.3 Height. The height of water closets shall be 11 inches (280 mm) minimum and 17 inches (430 mm) maximum measured to the top of the seat. Seats shall not be sprung to return to a lifted position.

604.9.4 Grab Bars. Grab bars for water closets shall comply with 604.5. 604.9.5 Flush Controls. Flush controls shall be hand operated or automatic. Hand operated flush controls shall comply with 309.2 and 309.4 and shall be installed 36 inches (915 mm) maximum above the finish floor. Flush controls shall be located on the open side of the water closet except in ambulatory accessible compartments complying with 604.8.2.

604.9.6 Dispensers. Toilet paper dispensers shall comply with 309.4 and shall be 7 inches (180 mm) minimum and 9 inches (230 mm) maximum in front of the water closet measured to the centerline of the dispenser. The outlet of the dispenser shall be 15 inches (380 mm) minimum and 19 inches (485 mm) maximum above the finish floor. There shall be a clearance of 1 1/2 inches (38 mm) minimum below the grab bar. Dispensers shall be of a type that controls delivery or that does not allow continuous paper flow.

604.9.7 Toilet Compartments. Toilet compartments shall comply with 604.8. 605 Urinals. 605.1 General. Urinals shall comply with 605. 605.2 Height and Depth. Urinals shall be the stall-type or the wall-hung type with the rim 17 inches (430 mm) maximum above the finish floor or ground. Urinals shall be 13 1/2 inches (345 mm) deep minimum measured from the outer face of the urinal rim to the back of the fixture.



605.3 Clear Floor Space. A clear floor or ground space complying with 305 positioned for forward approach shall be provided. 605.4 Flush Controls. Flush controls shall be hand operated or automatic. Hand operated flush controls shall comply with 309.2 and 309.4. 605.5 Lavatories and Sinks. 605.6 General. Lavatories and sinks shall comply with 606. 605.7 Grab Bars. 605.7.1 General. Grab bars in toilet facilities and bathing facilities shall comply with 609. 605.7.2 Cross Section. Grab bars shall have a cross section complying with 605.7.1 or 605.7.2.

605.7.2.1 Circular Cross Section. Grab bars with circular cross sections shall have an outside diameter of 1 1/4 inches (32 mm) minimum and 2 inches (51 mm) maximum. 605.7.2.2 Non-Circular Cross Section. Grab bars with non-circular cross sections shall have a cross-section dimension of 2 inches (51 mm) maximum and a perimeter dimension of 4 inches (100 mm) minimum and 4.8 inches (120 mm) maximum.

605.7.3 Spacing. The space between the wall and the grab bar shall be 1 1/2 inches (38 mm). The space between the grab bar and projecting objects below and at the ends shall be 1 1/2 inches (38 mm) minimum. The space between the grab bar and projecting objects above shall be 12 inches (305 mm) minimum.

EXCEPTION: The space between the grab bars and lower coat hooks, other grab bars above shall be permitted to be 1 1/2 inches (38 mm) minimum. 605.8 Position of Grab Bars. Grab bars shall be installed in a horizontal position, 33 inches (840 mm) minimum above the finish floor measured to the top of the gripping surface, except that for water closets and grab bars shall be installed in a horizontal position with 18 inches (455 mm) minimum and 27 inches (685 mm) maximum above the finish floor. Grab bars shall be installed on the back wall of a bathtub shall comply with 607.4.1.1 or 607.4.1.2.

605.9 Surface Hazards. Grab bars shall be installed on or adjacent surfaces adjacent to grab bars shall be free of sharp or abrasive elements and shall have rounded edges. 605.10 Fittings. Grab bars shall not rotate within their fittings. 605.11 Clearances. Grab bars shall be installed in any manner that provides a gripping surface at the specified locations and that does not obstruct the required clear floor space.

606 General Strength. Allowable stresses shall not be exceeded for materials used when a vertical or horizontal force of 250 pounds (1112 N) is applied at any point on the grab bar, fastener, mounting device, or supporting structure. CHAPTER 7: COMMUNICATION ELEMENTS AND FEATURES

701 General. The provisions of Chapter 7 shall apply where required by Chapter 2 or where referenced by a requirement in this document. 702 Fire Alarm Systems. 702.1 General. Fire alarm systems shall have permanently installed audible and visible alarms complying with NFPA 72 (1999 or 2002 edition) (incorporated by reference, see "Referenced Standards" in Chapter 1), except that the maximum allowable sound level of audible notification appliances complying with section 4-3.2.1 of NFPA 72 (1999 edition) shall have a sound level no more than 110 dB at the minimum hearing distance from the audible appliance. In addition, alarms in quiet rooms required to provide communication features shall comply with sections 4-3 and 4-4 of NFPA 72 (1999 edition) or sections 7.4 and 7.5 of NFPA 72 (2002 edition).

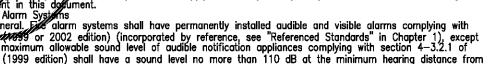
EXCEPTION: Fire alarm systems in medical care facilities shall be permitted to be provided in accordance with industry practice. 703 Signs. 703.1 General. Signs shall comply with 703. Where both visual and tactile characters are required, either one sign with both visual and tactile characters, or two separate signs, one with visual, and one with tactile characters, shall be provided. 703.2 Raised Characters. Raised characters shall comply with 703.2 and shall be duplicated in braille complying with 703.3. Raised characters shall be installed in accordance with 703.4.

703.2.1 Depth. Raised characters shall be 1/32 inch (0.8 mm) minimum above their background. 703.2.2 Case. Characters shall be uppercase. 703.2.3 Style. Characters shall be sans serif. Characters shall not be italic, oblique, script, highly decorative, or of other unusual forms. 703.2.4 Character Proportions. Characters shall be selected from fonts where the width of the uppercase letter "O" is 55 percent minimum and 110 percent maximum of the height of the uppercase letter "T".

703.2.5 Character Height. Character height measured vertically from the baseline of the character shall be 5/8 inch (16 mm) minimum and 2 inches (51 mm) maximum based on the height of the uppercase letter "T". EXCEPTION: Where separate raised and visual characters with the same information are provided, raised character height shall be permitted to be 1/2 inch (13 mm) minimum. 703.2.6 Stroke Thickness. Stroke thickness of the uppercase letter "T" shall be 15 percent maximum of the height of the character.

703.2.7 Character Spacing. Character spacing shall be measured between the two closest points of adjacent raised characters within a message, excluding word spaces. Where characters have rectangular cross sections, spacing between individual raised characters shall be 1/8 inch (3.2 mm) minimum and 4 times the raised character stroke width maximum at the top of the cross sections. Where characters have other cross sections, spacing between individual raised characters shall be 1/16 inch (1.6 mm) minimum and 4 times the raised character stroke width maximum at the base of the cross sections, and 1/8 inch (3.2 mm) minimum and 4 times the raised character stroke width maximum at the top of the cross sections. Characters shall be separated from raised borders and decorative elements 3/8 inch (9.5 mm) minimum. 703.2.8 Line Spacing. Spacing between the baselines of separate lines of raised characters within a message shall be 135 percent minimum and 170 percent maximum of the raised character height.

703.3 Braille. Braille shall be contracted (Grade 2) and shall comply with 703.3 and 703.4. 703.3.1 Dimensions and Capitalization. Braille dots shall have a domed or rounded shape and shall comply with Table 703.3.1. The indication of an uppercase letter or letters shall only be used before the first word of sentences, proper nouns and names, individual letters of the alphabet, initials, and acronyms.



703.2.8 Stroke Thickness. Stroke thickness of the uppercase letter "T" shall be 15 percent maximum of the height of the character. 703.2.9 Line Spacing. Spacing between the baselines of separate lines of characters within a message shall be 135 percent minimum and 170 percent maximum of the character height. 703.6 Pictograms. Pictograms shall comply with 703.6. 703.6.1 Pictogram Field. Pictograms shall have a field height of 6 inches (150 mm) minimum. Characters and braille shall not be located in the pictogram field. 703.6.2 Finish and Contrast. Pictograms and their field shall have a finish floor finish. Pictograms shall contrast with their field with either a light pictogram on a dark field or a dark pictogram on a light field. 703.6.3 Text Descriptors. Pictograms shall have text descriptors located directly below the pictogram field. Text descriptors shall comply with 703.2, 703.3 and 703.4. 703.7 Symbols and Accessibility. Symbols of accessibility shall comply with 703.7. 703.7.1 Finish and Contrast. Symbols of accessibility and their background shall have a non-gloss finish. Symbols of accessibility shall contrast with their background with either a light symbol on a dark background or a dark symbol on a light background. 703.7.2 Symbols. 703.7.2.1 International Symbol of Accessibility. The International Symbol of Accessibility shall comply with Figure 703.7.2.1. 703.7.2.2 International Symbol of TTY. The International Symbol of TTY shall comply with Figure 703.7.2.2. 703.7.2.3 Volume Control Telephones. Telephones with a volume control shall be identified by a pictogram of a telephone handset with radiating sound waves on a square field as shown in Figure 703.7.2.3. 703.7.2.4 Assistive Listening Systems. Assistive listening systems shall be identified by the International Symbol of Access for Hearing Loss complying with Figure 703.7.2.4.

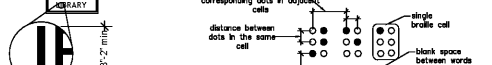
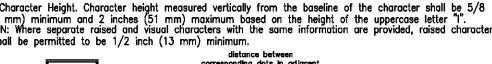
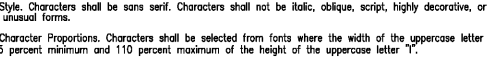
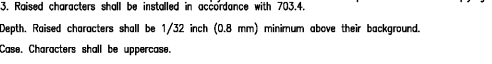
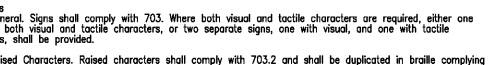


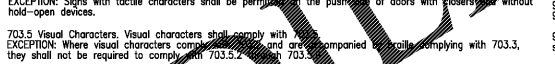
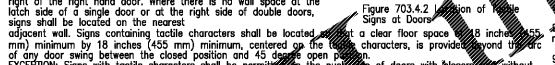
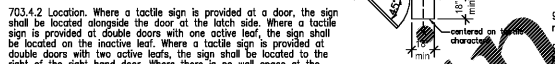
Table 703.3.1: Braille Dimensions. Measurement Range, Minimum in inches to maximum in inches. Dot diameter, 0.059 (1.5 mm) to 0.063 (1.6 mm). Distance between two dots in the same cell, 0.090 (2.3 mm) to 0.100 (2.5 mm) measured center to center. Distance between corresponding dots in adjacent cells, 0.241 (6.1 mm) to 0.300 (7.6 mm) measured center to center. Dot height, 0.025 (0.6 mm) to 0.037 (0.9 mm). Distance between corresponding dots from one cell directly below, 0.395 (10 mm) to 0.400 (10.2 mm) measured center to center.

703.3.2 Position. Braille shall be positioned below the corresponding text. If text is multi-lined, braille shall be placed below the entire text. Braille shall be separated 3/8 inch (9.5 mm) minimum from any other tactile characters and 3/8 inch (9.5 mm) minimum from raised borders and decorative elements. EXCEPTION: Braille provided on elevator car controls shall be separated 3/16 inch (4.8 mm) minimum and shall be located either directly below or adjacent to the corresponding raised characters or symbols.



703.4 Installation Height and Location. Signs with tactile characters shall comply with 703.4. 703.4.1 Height Above Finish Floor or Ground. Tactile characters on signs shall be located 48 inches (1220 mm) minimum above the finish floor or ground surface, measured from the baseline of the lowest tactile character and 60 inches (1525 mm) maximum above the finish floor or ground surface, measured from the baseline of the highest tactile character. EXCEPTION: Tactile characters for elevator car controls shall not be required to comply with 703.4.1.

703.4.2 Location. Where a tactile sign is provided at a door, the sign shall be located along the door at the latch side. Where a tactile sign is provided at double doors with one active leaf, the sign shall be located on the inactive leaf. Where there is no wall space at the right of the right hand door, the sign shall be located to the left side of a single door or at the right side of double doors. Signs shall be located on the nearest accessible wall. Signs containing tactile characters shall be located at a clear floor space 18 inches (455 mm) minimum and 19 inches (485 mm) maximum above the finish floor or ground surface, measured from the top of the sign. EXCEPTION: Signs with tactile characters shall be permitted to be placed on the push bar of doors with hoists without hold-open devices. 703.4.3 Signs at Doors. Signs at doors shall be 18 inches (455 mm) minimum and 19 inches (485 mm) maximum above the finish floor or ground surface, measured from the top of the sign. EXCEPTION: Signs with tactile characters shall be permitted to be placed on the push bar of doors with hoists without hold-open devices. 703.5 Visual Characters. Visual characters shall comply with 703.5. 703.5.1 General. Visual characters shall comply with 703.5. 703.5.2 Contrast. Visual characters shall be in a non-gloss finish. Characters shall contrast with their background with either a light character on a dark background or a dark character on a light background. 703.5.3 Style. Characters shall be uppercase or lowercase or a combination of both. 703.5.4 Character Proportions. Characters shall be selected from fonts where the width of the uppercase letter "O" is 55 percent minimum and 110 percent maximum of the height of the uppercase letter "T". 703.5.5 Character Height. Character height shall comply with Table 703.5.5. Viewing distance shall be measured from the horizontal centerline of the character and an obstruction preventing further approach towards the sign. Character height shall be based on the uppercase letter "T".



703.5.5 Viewing Distance. Minimum Character Height. Horizontal Viewing Distance. 40 inches (1015 mm) or less than or equal to 70 inches (1780 mm). 72 inches (1830 mm) and greater. Greater than 70 inches (1780 mm) to less than or equal to 120 inches (3050 mm). 180 inches (4570 mm) and greater. Greater than 120 inches (3050 mm). 21 feet (6400 mm) and greater. Minimum Character Height. 5/8 inch (16 mm). 3/8 inch (9.5 mm) per foot (305 mm) of viewing distance above 72 inches (1830 mm). 2 inch (51 mm). 2 inches (51 mm), plus 1/8 inch (3.2 mm) per foot (305 mm) of viewing distance above 180 inches (4570 mm). 3 inch (75 mm). 3 inches (75 mm), plus 1/8 inch (3.2 mm) per foot (305 mm) of viewing distance above 21 feet (6400 mm).

703.5.6 Height from Finish Floor or Ground. Visual characters shall be 40 inches (1015 mm) minimum above the finish floor or ground surface. EXCEPTION: Visual characters indicating elevator car controls shall not be required to comply with 703.5.6. 703.5.7 Stroke Thickness. Stroke thickness of the uppercase letter "T" shall be 10 percent minimum and 30 percent maximum of the height of the character. 703.5.8 Character Spacing. Character spacing shall be measured between the two closest points of adjacent characters, excluding word spaces. Spacing between individual characters shall be 10 percent minimum and 35 percent maximum of character height. 703.5.9 Line Spacing. Spacing between the baselines of separate lines of characters within a message shall be 135 percent minimum and 170 percent maximum of the character height. 703.6 Pictograms. Pictograms shall comply with 703.6. 703.6.1 Pictogram Field. Pictograms shall have a field height of 6 inches (150 mm) minimum. Characters and braille shall not be located in the pictogram field. 703.6.2 Finish and Contrast. Pictograms and their field shall have a finish floor finish. Pictograms shall contrast with their field with either a light pictogram on a dark field or a dark pictogram on a light field. 703.6.3 Text Descriptors. Pictograms shall have text descriptors located directly below the pictogram field. Text descriptors shall comply with 703.2, 703.3 and 703.4. 703.7 Symbols and Accessibility. Symbols of accessibility shall comply with 703.7. 703.7.1 Finish and Contrast. Symbols of accessibility and their background shall have a non-gloss finish. Symbols of accessibility shall contrast with their background with either a light symbol on a dark background or a dark symbol on a light background. 703.7.2 Symbols. 703.7.2.1 International Symbol of Accessibility. The International Symbol of Accessibility shall comply with Figure 703.7.2.1. 703.7.2.2 International Symbol of TTY. The International Symbol of TTY shall comply with Figure 703.7.2.2. 703.7.2.3 Volume Control Telephones. Telephones with a volume control shall be identified by a pictogram of a telephone handset with radiating sound waves on a square field as shown in Figure 703.7.2.3. 703.7.2.4 Assistive Listening Systems. Assistive listening systems shall be identified by the International Symbol of Access for Hearing Loss complying with Figure 703.7.2.4.

